



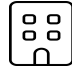


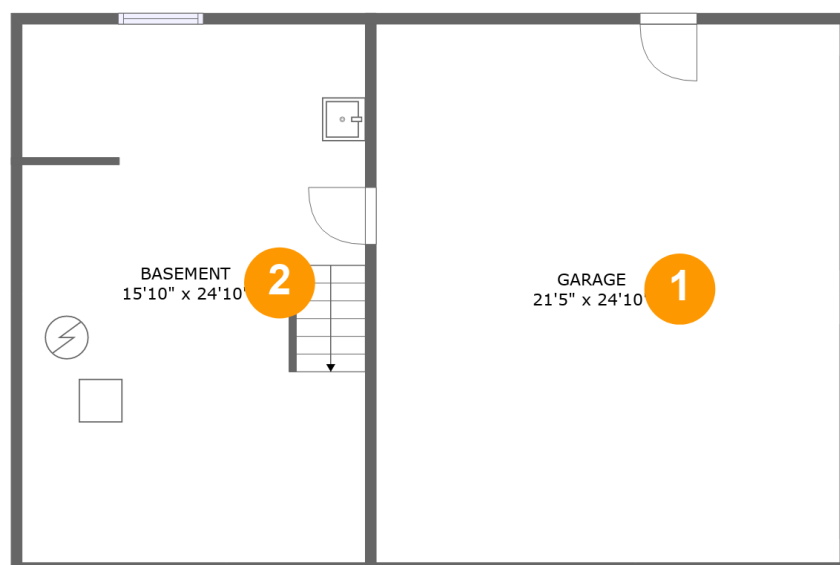
102 Lee Street, West Boylston, Worcester County, Massachusetts, United States, 01583



Property Summary

 **1** garages  **4** bedrooms  **2** bathrooms  **1** half baths

 **3** floors  **2,269** Gross Living Area sqft  **3,283** total sqft

**102 Lee Street, West Boylston, Worcester
County, Massachusetts, United States, 01583****Room Dimensions**

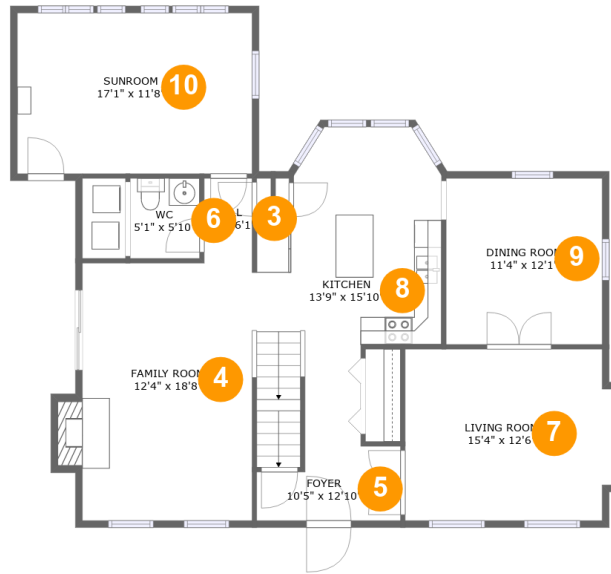
Floor 1

Total sqft: 1004

Living area: 0

#	Room name	Dimensions	Area (sqft)	Counted as Living Area
1	Garage	21'5" x 24'10"	533 sq. ft	No
2	Basement	15'10" x 24'10"	393 sq. ft	No

102 Lee Street, West Boylston, Worcester County, Massachusetts, United States, 01583



Room Dimensions

Floor 2

Total sqft: 1276

Living area: 1266

#	Room name	Dimensions	Area (sqft)	Counted as Living Area
3	Hall	3'6" x 6'1"	21 sq. ft	Yes
4	Family Room	12'4" x 18'8"	239 sq. ft	Yes
5	Foyer	10'5" x 12'10"	110 sq. ft	Yes
6	Wc	5'1" x 5'10"	29 sq. ft	Yes
7	Living Room	15'4" x 12'6"	186 sq. ft	Yes
8	Kitchen	13'9" x 15'10"	187 sq. ft	Yes
9	Dining Room	11'4" x 12'1"	137 sq. ft	Yes
10	Sunroom	17'1" x 11'8"	199 sq. ft	Yes

102 Lee Street, West Boylston, Worcester County, Massachusetts, United States, 01583



Room Dimensions

Floor 3

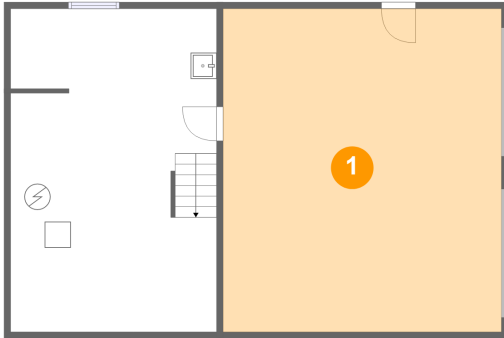
Total sqft: 1003

Living area: 1003

#	Room name	Dimensions	Area (sqft)	Counted as Living Area
11	Bedroom	9'9" x 12'3"	119 sq. ft	Yes
12	Primary Bedroom	12'4" x 13'0"	161 sq. ft	Yes
13	Bedroom	13'9" x 12'4"	150 sq. ft	Yes
14	Bath	8'8" x 8'6"	55 sq. ft	Yes
15	Bath	9'1" x 8'6"	68 sq. ft	Yes
16	Bedroom	12'4" x 9'0"	111 sq. ft	Yes
17	Hall	15'1" x 16'0"	149 sq. ft	Yes

102 Lee Street, West Boylston, Worcester County, Massachusetts, United States, 01583

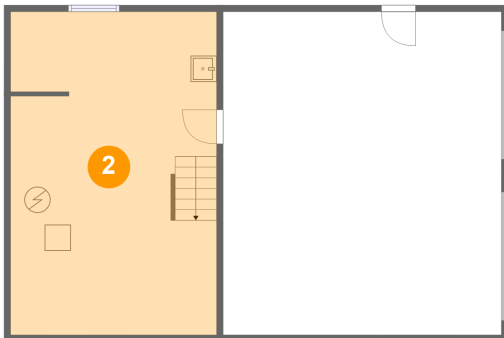
1 Floor 1 - Garage



Dimensions: 21'5" x 24'10"
Area: 533 sq. ft
Counted as Living Area: No

Heated: No
Finished: No
Enclosed: Yes
Contiguous: Yes
Permitted: Yes
Wet Space: No
Addition: No
Conversion: No

2 Floor 1 - Basement

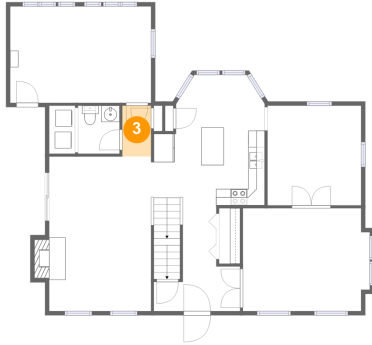


Dimensions: 15'10" x 24'10"
Area: 393 sq. ft
Counted as Living Area: No

Heated: No
Finished: No
Enclosed: Yes
Contiguous: Yes
Permitted: Yes
Wet Space: No
Addition: No
Conversion: No

102 Lee Street, West Boylston, Worcester County, Massachusetts, United States, 01583

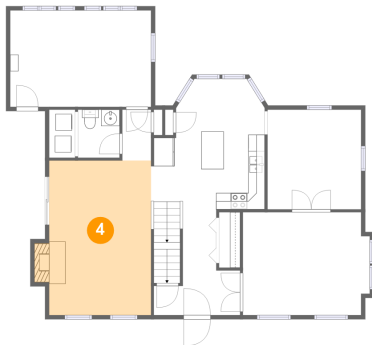
3 Floor 2 - Hall



Dimensions: 3'6" x 6'1"
Area: 21 sq. ft
Counted as Living Area:
Yes

Heated: Yes
Finished: Yes
Enclosed: Yes
Contiguous:
Yes
Permitted: Yes
Wet Space: No
Addition: No
Conversion: No

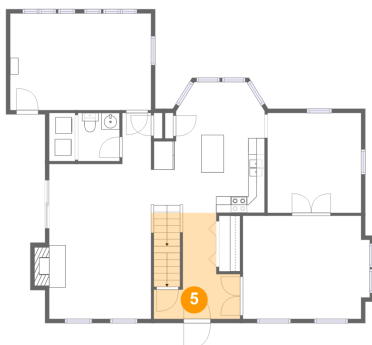
4 Floor 2 - Family Room



Dimensions: 12'4" x 18'8"
Area: 239 sq. ft
Counted as Living Area:
Yes

Heated: Yes
Finished: Yes
Enclosed: Yes
Contiguous:
Yes
Permitted: Yes
Wet Space: No
Addition: No
Conversion: No

5 Floor 2 - Foyer

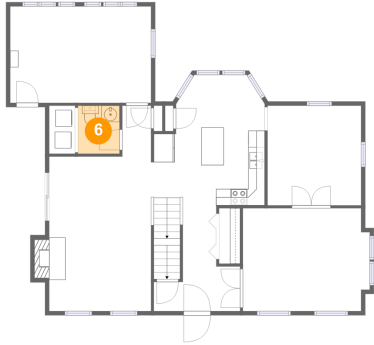


Dimensions: 10'5" x 12'10"
Area: 110 sq. ft
Counted as Living Area:
Yes

Heated: Yes
Finished: Yes
Enclosed: Yes
Contiguous:
Yes
Permitted: Yes
Wet Space: No
Addition: No
Conversion: No

102 Lee Street, West Boylston, Worcester County, Massachusetts, United States, 01583

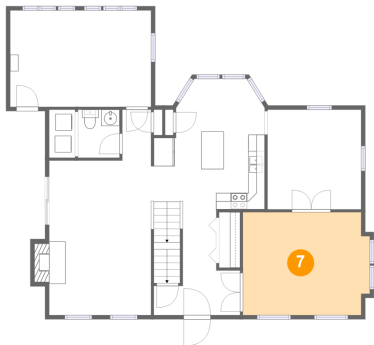
6 Floor 2 - Wc



Dimensions: 5'1" x 5'10"
Area: 29 sq. ft
Counted as Living Area:
Yes

Heated: Yes
Finished: Yes
Enclosed: Yes
Contiguous:
Yes
Permitted: Yes
Wet Space: Yes
Addition: No
Conversion: No

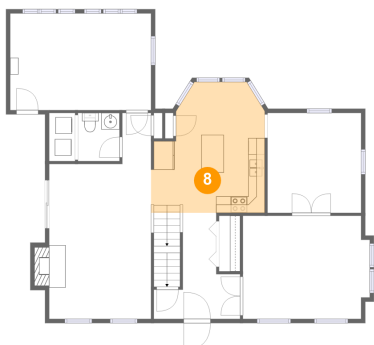
7 Floor 2 - Living Room



Dimensions: 15'4" x 12'6"
Area: 186 sq. ft
Counted as Living Area:
Yes

Heated: Yes
Finished: Yes
Enclosed: Yes
Contiguous:
Yes
Permitted: Yes
Wet Space: No
Addition: No
Conversion: No

8 Floor 2 - Kitchen

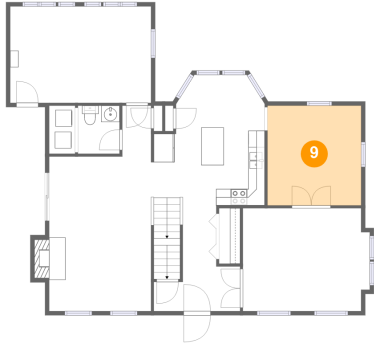


Dimensions: 13'9" x 15'10"
Area: 187 sq. ft
Counted as Living Area:
Yes

Heated: Yes
Finished: Yes
Enclosed: Yes
Contiguous:
Yes
Permitted: Yes
Wet Space: No
Addition: No
Conversion: No

102 Lee Street, West Boylston, Worcester County, Massachusetts, United States, 01583

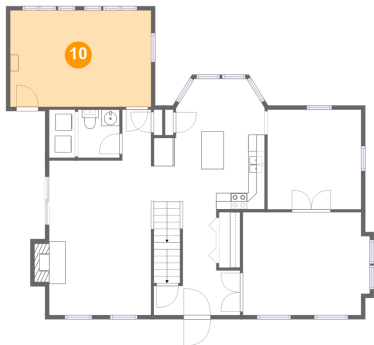
9 Floor 2 - Dining Room



Dimensions: 11'4" x 12'1"
Area: 137 sq. ft
Counted as Living Area:
Yes

Heated: Yes
Finished: Yes
Enclosed: Yes
Contiguous:
Yes
Permitted: Yes
Wet Space: No
Addition: No
Conversion: No

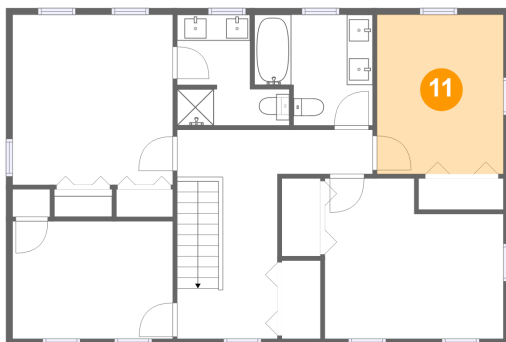
10 Floor 2 - Sunroom



Dimensions: 17'1" x 11'8"
Area: 199 sq. ft
Counted as Living Area:
Yes

Heated: Yes
Finished: Yes
Enclosed: Yes
Contiguous:
Yes
Permitted: Yes
Wet Space: No
Addition: No
Conversion: No

11 Floor 3 - Bedroom



Dimensions: 9'9" x 12'3"
Area: 119 sq. ft
Counted as Living Area:
Yes

Heated: Yes
Finished: Yes
Enclosed: Yes
Contiguous:
Yes
Permitted: Yes
Wet Space: No
Addition: No
Conversion: No

**102 Lee Street, West Boylston, Worcester
County, Massachusetts, United States, 01583**

12 Floor 3 - Primary Bedroom



Dimensions: 12'4" x 13'0"
Area: 161 sq. ft
Counted as Living Area:
Yes

Heated: Yes
Finished: Yes
Enclosed: Yes
Contiguous:
Yes
Permitted: Yes
Wet Space: No
Addition: No
Conversion: No

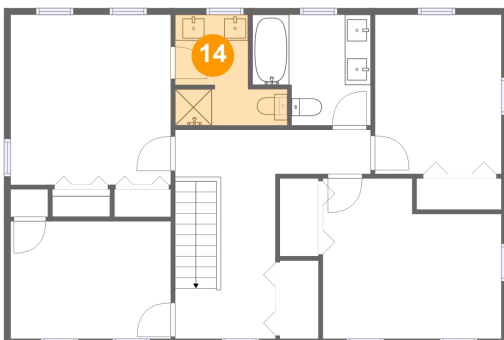
13 Floor 3 - Bedroom



Dimensions: 13'9" x 12'4"
Area: 150 sq. ft
Counted as Living Area:
Yes

Heated: Yes
Finished: Yes
Enclosed: Yes
Contiguous:
Yes
Permitted: Yes
Wet Space: No
Addition: No
Conversion: No

14 Floor 3 - Bath

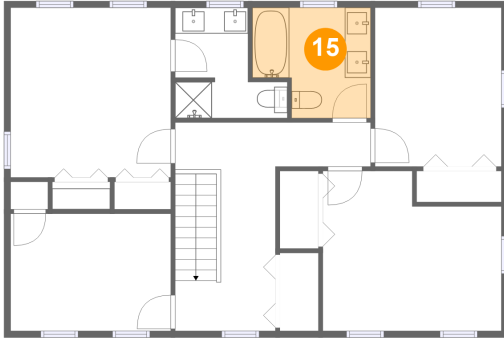


Dimensions: 8'8" x 8'6"
Area: 55 sq. ft
Counted as Living Area:
Yes

Heated: Yes
Finished: Yes
Enclosed: Yes
Contiguous:
Yes
Permitted: Yes
Wet Space: Yes
Addition: No
Conversion: No

102 Lee Street, West Boylston, Worcester County, Massachusetts, United States, 01583

15 Floor 3 - Bath



Dimensions: 9'1" x 8'6"
Area: 68 sq. ft
Counted as Living Area:
Yes

Heated: Yes
Finished: Yes
Enclosed: Yes
Contiguous:
Yes
Permitted: Yes
Wet Space: Yes
Addition: No
Conversion: No

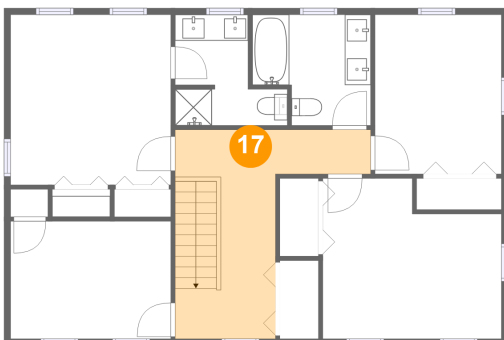
16 Floor 3 - Bedroom



Dimensions: 12'4" x 9'0"
Area: 111 sq. ft
Counted as Living Area:
Yes

Heated: Yes
Finished: Yes
Enclosed: Yes
Contiguous:
Yes
Permitted: Yes
Wet Space: No
Addition: No
Conversion: No

17 Floor 3 - Hall



Dimensions: 15'1" x 16'0"
Area: 149 sq. ft
Counted as Living Area:
Yes

Heated: Yes
Finished: Yes
Enclosed: Yes
Contiguous:
Yes
Permitted: Yes
Wet Space: No
Addition: No
Conversion: No