

8636 15th Way North, Barclay Estates, St. Petersburg, Pinellas County, Florida, United States, 33702

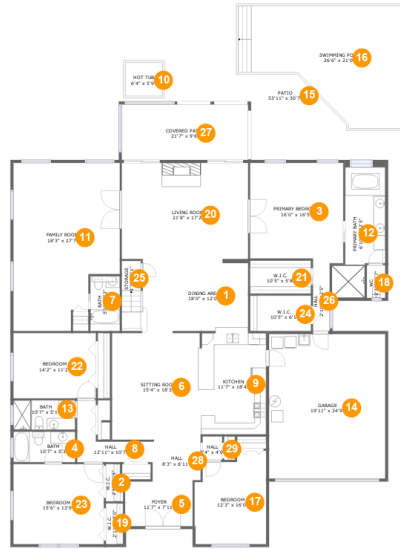


Property summary

1 Garages **5** Bedrooms **5** Bathrooms **0** Half baths

2 Floors **3,857** Gross living area sqft **5,993** Total sqft

8636 15th Way North, Barclay Estates, St. Petersburg, Pinellas County, Florida, United States, 33702



Room dimensions

Floor 1

Total sqft: 5124 Living area: 3449

#		Dimensions	sqft	Counted as living area
1	Dining Area	18'0" x 12'0"	233 sq. ft	Yes
2	W.I.C.	2'5" x 6'5"	17 sq. ft	Yes
3	Primary Bedroom	16'0" x 16'5"	262 sq. ft	Yes
4	Bath	10'7" x 5'3"	55 sq. ft	Yes
5	Foyer	11'7" x 7'11"	90 sq. ft	Yes
6	Sitting Room	15'4" x 18'3"	275 sq. ft	Yes
7	Bath	5'1" x 8'2"	48 sq. ft	Yes
8	Hall	12'11" x 10'7"	68 sq. ft	Yes
9	Kitchen	11'7" x 18'4"	202 sq. ft	Yes
10	Hot Tub	6'4" x 5'9"	37 sq. ft	No
11	Family Room	18'3" x 27'7"	462 sq. ft	Yes

**8636 15th Way North, Barclay Estates, St. Petersburg,
Pinellas County, Florida, United States, 33702**

#		Dimensions	sqft	Counted as living area
12	Primary Bath	6'10" x 22'5"	146 sq. ft	Yes
13	Bath	10'7" x 5'1"	53 sq. ft	Yes
14	Garage	19'11" x 24'9"	493 sq. ft	No
15	Patio	53'11" x 30'7"	1429 sq. ft	No
16	Swimming Pool	26'6" x 21'0"	461 sq. ft	No
17	Bedroom	12'3" x 16'0"	177 sq. ft	Yes
18	WC	3'2" x 5'7"	18 sq. ft	Yes
19	W.I.C.	2'11" x 7'0"	21 sq. ft	Yes
20	Living Room	21'8" x 17'2"	366 sq. ft	Yes
21	W.I.C.	10'5" x 5'8"	59 sq. ft	Yes
22	Bedroom	14'2" x 11'2"	158 sq. ft	Yes
23	Bedroom	15'6" x 13'9"	213 sq. ft	Yes
24	W.I.C.	10'5" x 6'1"	63 sq. ft	Yes
25	Storage	3'3" x 5'1"	17 sq. ft	No
26	Hall	2'10" x 12'5"	38 sq. ft	Yes
27	Covered Patio	21'7" x 9'6"	206 sq. ft	No
28	Hall	8'3" x 6'11"	57 sq. ft	Yes
29	Hall	3'4" x 4'0"	14 sq. ft	Yes

8636 15th Way North, Barclay Estates, St. Petersburg,
Pinellas County, Florida, United States, 33702



Room dimensions

Floor 2

Total sqft: 869 Living area: 408

#		Dimensions	sqft	Counted as living area
30	Game Room	18'4" x 13'10"	249 sq. ft	Yes
31	Open To Below	21'6" x 14'8"	315 sq. ft	No
32	Bedroom	9'10" x 11'11"	87 sq. ft	Yes
33	Bath	5'4" x 8'7"	42 sq. ft	Yes

**8636 15th Way North, Barclay Estates, St. Petersburg,
Pinellas County, Florida, United States, 33702**

1 Floor 1 - Dining Area



Dimensions: 18'0" x 12'0"
Area: 233 sq. ft
Counted as living area: Yes

Heated: Yes
Finished: Yes
Enclosed: Yes
Contiguous: Yes
Permitted: Yes
Wet space: No
Addition: No
Conversion: No

2 Floor 1 - W.I.C.

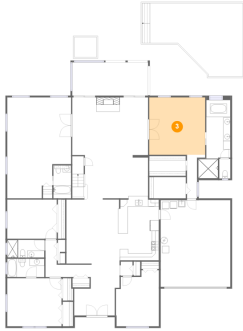


Dimensions: 2'5" x 6'5"
Area: 17 sq. ft
Counted as living area: Yes

Heated: Yes
Finished: Yes
Enclosed: Yes
Contiguous: Yes
Permitted: Yes
Wet space: No
Addition: No
Conversion: No

**8636 15th Way North, Barclay Estates, St. Petersburg,
Pinellas County, Florida, United States, 33702**

3 Floor 1 - Primary Bedroom



Dimensions: 16'0" x 16'5"
Area: 262 sq. ft
Counted as living area: Yes

Heated: Yes
Finished: Yes
Enclosed: Yes
Contiguous: Yes
Permitted: Yes
Wet space: No
Addition: No
Conversion: No

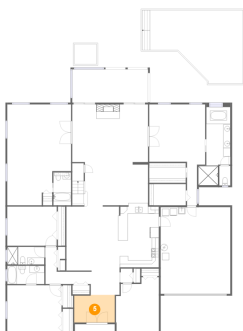
4 Floor 1 - Bath



Dimensions: 10'7" x 5'3"
Area: 55 sq. ft
Counted as living area: Yes

Heated: Yes
Finished: Yes
Enclosed: Yes
Contiguous: Yes
Permitted: Yes
Wet space: Yes
Addition: No
Conversion: No

5 Floor 1 - Foyer

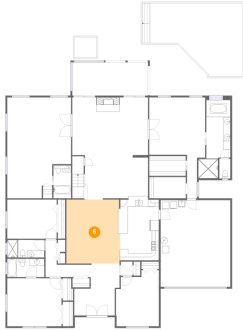


Dimensions: 11'7" x 7'11"
Area: 90 sq. ft
Counted as living area: Yes

Heated: Yes
Finished: Yes
Enclosed: Yes
Contiguous: Yes
Permitted: Yes
Wet space: No
Addition: No
Conversion: No

8636 15th Way North, Barclay Estates, St. Petersburg, Pinellas County, Florida, United States, 33702

6 Floor 1 - Sitting Room



Dimensions: 15'4" x 18'3"
Area: 275 sq. ft
Counted as living area: Yes

Heated: Yes
Finished: Yes
Enclosed: Yes
Contiguous: Yes
Permitted: Yes
Wet space: No
Addition: No
Conversion: No

7 Floor 1 - Bath



Dimensions: 5'1" x 8'2"
Area: 48 sq. ft
Counted as living area: Yes

Heated: Yes
Finished: Yes
Enclosed: Yes
Contiguous: Yes
Permitted: Yes
Wet space: Yes
Addition: No
Conversion: No

8 Floor 1 - Hall

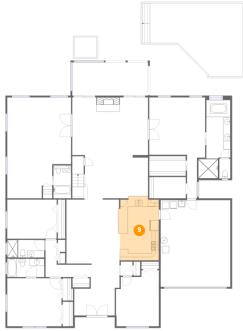


Dimensions: 12'11" x 10'7"
Area: 68 sq. ft
Counted as living area: Yes

Heated: Yes
Finished: Yes
Enclosed: Yes
Contiguous: Yes
Permitted: Yes
Wet space: No
Addition: No
Conversion: No

8636 15th Way North, Barclay Estates, St. Petersburg,
Pinellas County, Florida, United States, 33702

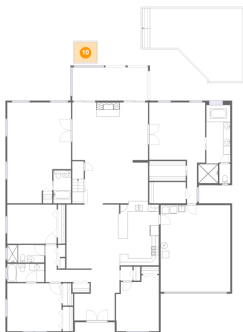
9 Floor 1 - Kitchen



Dimensions: 11'7" x 18'4"
Area: 202 sq. ft
Counted as living area: Yes

Heated: Yes
Finished: Yes
Enclosed: Yes
Contiguous: Yes
Permitted: Yes
Wet space: No
Addition: No
Conversion: No

10 Floor 1 - Hot Tub



Dimensions: 6'4" x 5'9"
Area: 37 sq. ft
Counted as living area: No

Heated: No
Finished: No
Enclosed: No
Contiguous: Yes
Permitted: No
Wet space: No
Addition: No
Conversion: No

11 Floor 1 - Family Room

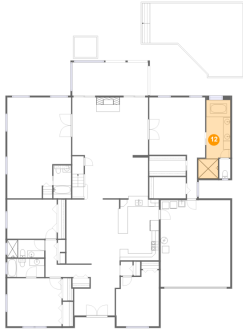


Dimensions: 18'3" x 27'7"
Area: 462 sq. ft
Counted as living area: Yes

Heated: Yes
Finished: Yes
Enclosed: Yes
Contiguous: Yes
Permitted: Yes
Wet space: No
Addition: No
Conversion: No

8636 15th Way North, Barclay Estates, St. Petersburg,
Pinellas County, Florida, United States, 33702

12 Floor 1 - Primary Bath



Dimensions: 6'10" x 22'5"
Area: 146 sq. ft
Counted as living area: Yes

Heated: Yes
Finished: Yes
Enclosed: Yes
Contiguous: Yes
Permitted: Yes
Wet space: Yes
Addition: No
Conversion: No

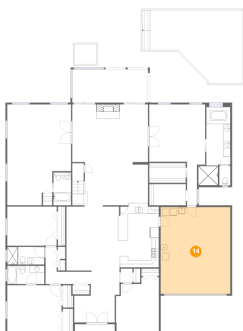
13 Floor 1 - Bath



Dimensions: 10'7" x 5'1"
Area: 53 sq. ft
Counted as living area: Yes

Heated: Yes
Finished: Yes
Enclosed: Yes
Contiguous: Yes
Permitted: Yes
Wet space: Yes
Addition: No
Conversion: No

14 Floor 1 - Garage



Dimensions: 19'11" x 24'9"
Area: 493 sq. ft
Counted as living area: No

Heated: No
Finished: No
Enclosed: Yes
Contiguous: Yes
Permitted: Yes
Wet space: No
Addition: No
Conversion: No

**8636 15th Way North, Barclay Estates, St. Petersburg,
Pinellas County, Florida, United States, 33702**

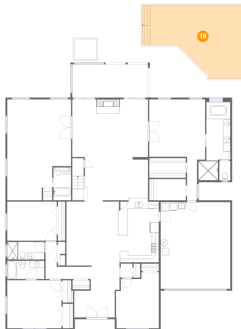
15 Floor 1 - Patio



Dimensions: 53'11" x 30'7"
Area: 1429 sq. ft
Counted as living area: No

Heated: No
Finished: Yes
Enclosed: No
Contiguous: Yes
Permitted: Yes
Wet space: No
Addition: No
Conversion: No

16 Floor 1 - Swimming Pool



Dimensions: 26'6" x 21'0"
Area: 461 sq. ft
Counted as living area: No

Heated: No
Finished: No
Enclosed: No
Contiguous: Yes
Permitted: No
Wet space: No
Addition: No
Conversion: No

17 Floor 1 - Bedroom



Dimensions: 12'3" x 16'0"
Area: 177 sq. ft
Counted as living area: Yes

Heated: Yes
Finished: Yes
Enclosed: Yes
Contiguous: Yes
Permitted: Yes
Wet space: No
Addition: No
Conversion: No

8636 15th Way North, Barclay Estates, St. Petersburg,
Pinellas County, Florida, United States, 33702

18 Floor 1 - WC



Dimensions: 3'2" x 5'7"
Area: 18 sq. ft
Counted as living area: Yes

Heated: Yes
Finished: Yes
Enclosed: Yes
Contiguous: Yes
Permitted: Yes
Wet space: No
Addition: No
Conversion: No

19 Floor 1 - W.I.C.



Dimensions: 2'11" x 7'0"
Area: 21 sq. ft
Counted as living area: Yes

Heated: Yes
Finished: Yes
Enclosed: Yes
Contiguous: Yes
Permitted: Yes
Wet space: No
Addition: No
Conversion: No

20 Floor 1 - Living Room

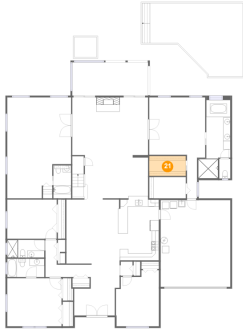


Dimensions: 21'8" x 17'2"
Area: 366 sq. ft
Counted as living area: Yes

Heated: Yes
Finished: Yes
Enclosed: Yes
Contiguous: Yes
Permitted: Yes
Wet space: No
Addition: No
Conversion: No

8636 15th Way North, Barclay Estates, St. Petersburg,
Pinellas County, Florida, United States, 33702

21 Floor 1 - W.I.C.



Dimensions: 10'5" x 5'8"
Area: 59 sq. ft
Counted as living area: Yes

Heated: Yes
Finished: Yes
Enclosed: Yes
Contiguous: Yes
Permitted: Yes
Wet space: No
Addition: No
Conversion: No

22 Floor 1 - Bedroom



Dimensions: 14'2" x 11'2"
Area: 158 sq. ft
Counted as living area: Yes

Heated: Yes
Finished: Yes
Enclosed: Yes
Contiguous: Yes
Permitted: Yes
Wet space: No
Addition: No
Conversion: No

23 Floor 1 - Bedroom



Dimensions: 15'6" x 13'9"
Area: 213 sq. ft
Counted as living area: Yes

Heated: Yes
Finished: Yes
Enclosed: Yes
Contiguous: Yes
Permitted: Yes
Wet space: No
Addition: No
Conversion: No

8636 15th Way North, Barclay Estates, St. Petersburg,
Pinellas County, Florida, United States, 33702

24 Floor 1 - W.I.C.



Dimensions: 10'5" x 6'1"
Area: 63 sq. ft
Counted as living area: Yes

Heated: Yes
Finished: Yes
Enclosed: Yes
Contiguous: Yes
Permitted: Yes
Wet space: No
Addition: No
Conversion: No

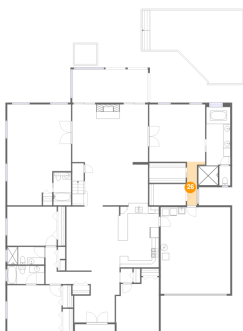
25 Floor 1 - Storage



Dimensions: 3'3" x 5'1"
Area: 17 sq. ft
Counted as living area: No

Heated: No
Finished: No
Enclosed: No
Contiguous: Yes
Permitted: Yes
Wet space: No
Addition: No
Conversion: No

26 Floor 1 - Hall



Dimensions: 2'10" x 12'5"
Area: 38 sq. ft
Counted as living area: Yes

Heated: Yes
Finished: Yes
Enclosed: Yes
Contiguous: Yes
Permitted: Yes
Wet space: No
Addition: No
Conversion: No

8636 15th Way North, Barclay Estates, St. Petersburg,
Pinellas County, Florida, United States, 33702

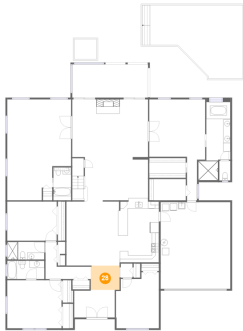
27 Floor 1 - Covered Patio



Dimensions: 21'7" x 9'6"
Area: 206 sq. ft
Counted as living area: No

Heated: No
Finished: Yes
Enclosed: No
Contiguous: Yes
Permitted: Yes
Wet space: No
Addition: No
Conversion: No

28 Floor 1 - Hall



Dimensions: 8'3" x 6'11"
Area: 57 sq. ft
Counted as living area: Yes

Heated: Yes
Finished: Yes
Enclosed: Yes
Contiguous: Yes
Permitted: Yes
Wet space: No
Addition: No
Conversion: No

29 Floor 1 - Hall

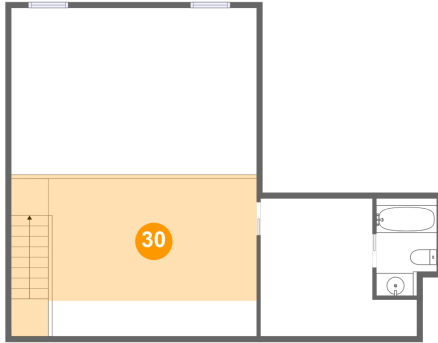


Dimensions: 3'4" x 4'0"
Area: 14 sq. ft
Counted as living area: Yes

Heated: Yes
Finished: Yes
Enclosed: Yes
Contiguous: Yes
Permitted: Yes
Wet space: No
Addition: No
Conversion: No

8636 15th Way North, Barclay Estates, St. Petersburg,
Pinellas County, Florida, United States, 33702

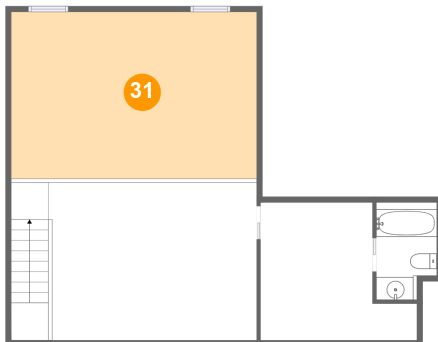
30 Floor 2 - Game Room



Dimensions: 18'4" x 13'10"
Area: 249 sq. ft
Counted as living area: Yes

Heated: Yes
Finished: Yes
Enclosed: Yes
Contiguous: Yes
Permitted: Yes
Wet space: No
Addition: No
Conversion: No

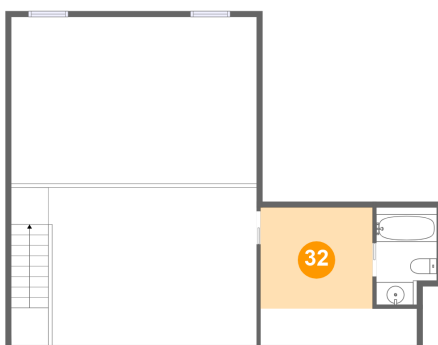
31 Floor 2 - Open To Below



Dimensions: 21'6" x 14'8"
Area: 315 sq. ft
Counted as living area: No

Heated: No
Finished: No
Enclosed: No
Contiguous: Yes
Permitted: No
Wet space: No
Addition: No
Conversion: No

32 Floor 2 - Bedroom



Dimensions: 9'10" x 11'11"
Area: 87 sq. ft
Counted as living area: Yes

Heated: Yes
Finished: Yes
Enclosed: Yes
Contiguous: Yes
Permitted: Yes
Wet space: No
Addition: No
Conversion: No

**8636 15th Way North, Barclay Estates, St. Petersburg,
Pinellas County, Florida, United States, 33702**

33 Floor 2 - Bath



Dimensions: 5'4" x 8'7"
Area: 42 sq. ft
Counted as living area: Yes

Heated: Yes
Finished: Yes
Enclosed: Yes
Contiguous: Yes
Permitted: Yes
Wet space: Yes
Addition: No
Conversion: No