



## Property summary



# 1 Garages



## 5 Bedrooms



## 4 Bathrooms



## 0 Half baths



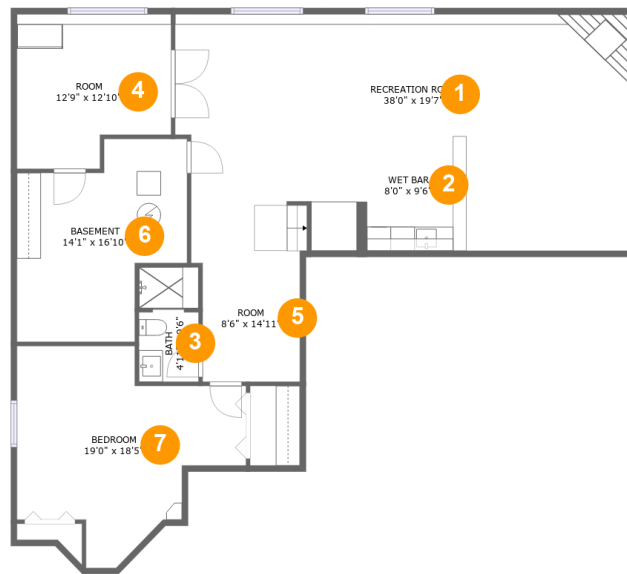
### 3 Floors



**4,805**  
Gross living  
area sqft



**6,566**  
Total sqft

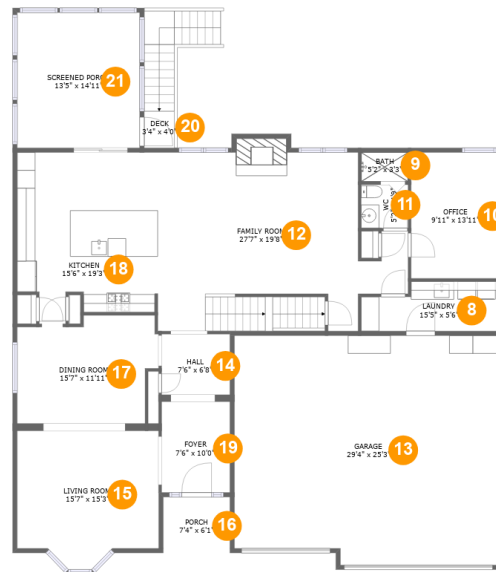


## Room dimensions

### Floor 1

Total sqft: 1607 Living area: 1398

#		Dimensions	sqft	Counted as living area
1	Recreation Room	38'0" x 19'7"	616 sq. ft	Yes
2	Wet Bar	8'0" x 9'6"	72 sq. ft	Yes
3	Bath	4'11" x 9'6"	46 sq. ft	Yes
4	Room	12'9" x 12'10"	147 sq. ft	Yes
5	Room	8'6" x 14'11"	127 sq. ft	Yes
6	Basement	14'1" x 16'10"	189 sq. ft	No
7	Bedroom	19'0" x 18'5"	237 sq. ft	Yes



## Room dimensions

Floor 2

Total sqft: 2775 Living area: 1674

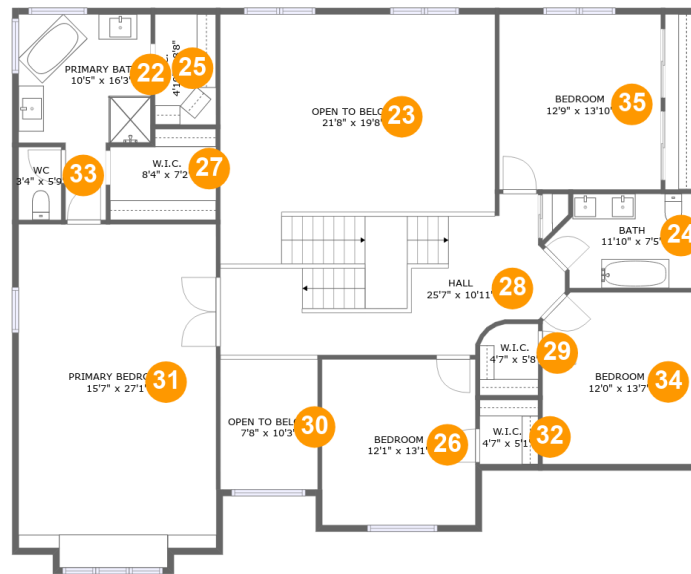
#		Dimensions	sqft	Counted as living area
8	Laundry	15'5" x 5'6"	75 sq. ft	Yes
9	Bath	5'2" x 3'3"	17 sq. ft	Yes
10	Office	9'11" x 13'11"	137 sq. ft	Yes
11	WC	5'2" x 4'9"	25 sq. ft	Yes
12	Family Room	27'7" x 19'8"	468 sq. ft	Yes
13	Garage	29'4" x 25'3"	722 sq. ft	No
14	Hall	7'6" x 6'8"	50 sq. ft	Yes
15	Living Room	15'7" x 15'3"	213 sq. ft	Yes
16	Porch	7'4" x 6'1"	45 sq. ft	No
17	Dining Room	15'7" x 11'11"	167 sq. ft	Yes
18	Kitchen	15'6" x 19'3"	267 sq. ft	Yes

Home report

**2933 Kelly Drive, Elgin, Kane County, Illinois, United States, 60124**



#		Dimensions	sqft	Counted as living area
19	Foyer	7'6" x 10'0"	75 sq. ft	Yes
20	Deck	3'4" x 4'0"	69 sq. ft	No
21	Screened Porch	13'5" x 14'11"	202 sq. ft	No



## Room dimensions

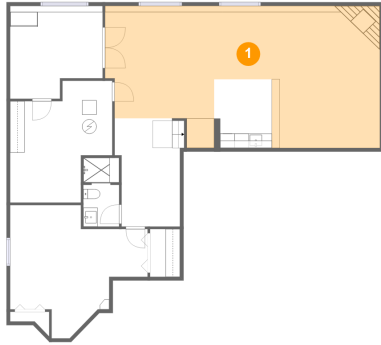
Floor 3

Total sqft: 2184 Living area: 1733

#		Dimensions	sqft	Counted as living area
22	Primary Bath	10'5" x 16'3"	125 sq. ft	Yes
23	Open To Below	21'8" x 19'8"	358 sq. ft	No
24	Bath	11'10" x 7'5"	77 sq. ft	Yes
25	W.I.C.	4'10" x 8'8"	42 sq. ft	Yes
26	Bedroom	12'1" x 13'1"	158 sq. ft	Yes
27	W.I.C.	8'4" x 7'2"	55 sq. ft	Yes
28	Hall	25'7" x 10'11"	267 sq. ft	Yes
29	W.I.C.	4'7" x 5'8"	25 sq. ft	Yes
30	Open To Below	7'8" x 10'3"	79 sq. ft	No
31	Primary Bedroom	15'7" x 27'1"	412 sq. ft	Yes
32	W.I.C.	4'7" x 5'1"	23 sq. ft	Yes

#		Dimensions	sqft	Counted as living area
33	WC	3'4" x 5'9"	19 sq. ft	Yes
34	Bedroom	12'0" x 13'7"	160 sq. ft	Yes
35	Bedroom	12'9" x 13'10"	176 sq. ft	Yes

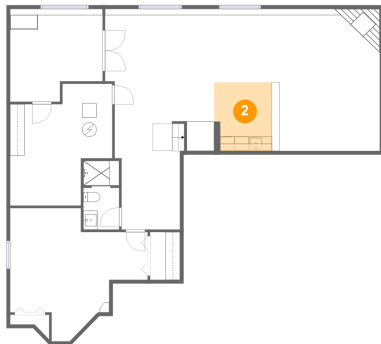
## 1 Floor 1 - Recreation Room



Dimensions: 38'0" x 19'7"  
Area: 616 sq. ft  
Counted as living area: Yes

Heated: Yes  
Finished: Yes  
Enclosed: Yes  
Contiguous: Yes  
Permitted: Yes  
Wet space: No  
Addition: No  
Conversion: No

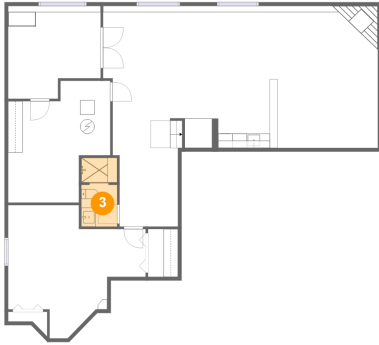
## 2 Floor 1 - Wet Bar



Dimensions: 8'0" x 9'6"  
Area: 72 sq. ft  
Counted as living area: Yes

Heated: Yes  
Finished: Yes  
Enclosed: Yes  
Contiguous: Yes  
Permitted: Yes  
Wet space: No  
Addition: No  
Conversion: No

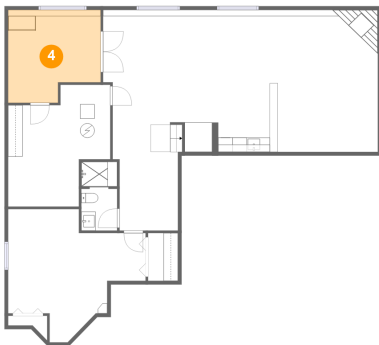
### 3 Floor 1 - Bath



Dimensions: 4'11" x 9'6"  
Area: 46 sq. ft  
Counted as living area: Yes

Heated: Yes  
Finished: Yes  
Enclosed: Yes  
Contiguous: Yes  
Permitted: Yes  
Wet space: Yes  
Addition: No  
Conversion: No

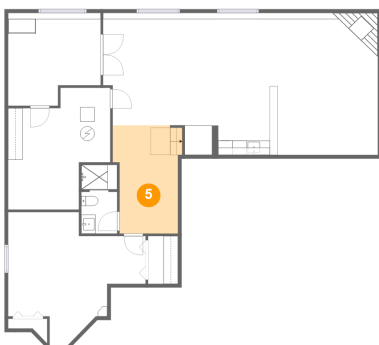
### 4 Floor 1 - Room



Dimensions: 12'9" x 12'10"  
Area: 147 sq. ft  
Counted as living area: Yes

Heated: Yes  
Finished: Yes  
Enclosed: Yes  
Contiguous: Yes  
Permitted: Yes  
Wet space: No  
Addition: No  
Conversion: No

### 5 Floor 1 - Room

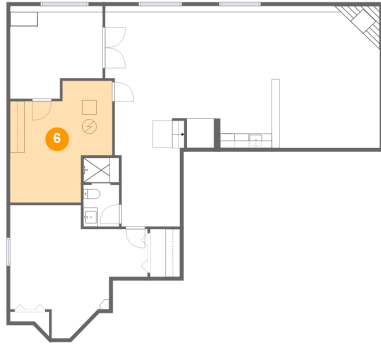


Dimensions: 8'6" x 14'11"  
Area: 127 sq. ft  
Counted as living area: Yes

Heated: Yes  
Finished: Yes  
Enclosed: Yes  
Contiguous: Yes  
Permitted: Yes  
Wet space: No  
Addition: No  
Conversion: No



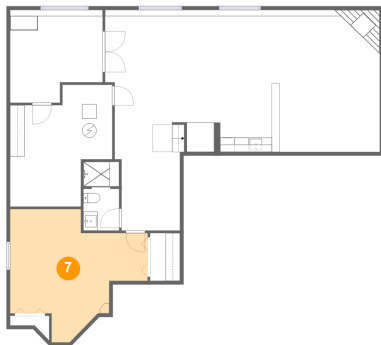
## 6 Floor 1 - Basement



Dimensions: 14'1" x 16'10"  
Area: 189 sq. ft  
Counted as living area: No

Heated: Yes  
Finished: No  
Enclosed: Yes  
Contiguous: Yes  
Permitted: Yes  
Wet space: No  
Addition: No  
Conversion: No

## 7 Floor 1 - Bedroom



Dimensions: 19'0" x 18'5"  
Area: 237 sq. ft  
Counted as living area: Yes

Heated: Yes  
Finished: Yes  
Enclosed: Yes  
Contiguous: Yes  
Permitted: Yes  
Wet space: No  
Addition: No  
Conversion: No

## 8 Floor 2 - Laundry



Dimensions: 15'5" x 5'6"  
Area: 75 sq. ft  
Counted as living area: Yes

Heated: Yes  
Finished: Yes  
Enclosed: Yes  
Contiguous: Yes  
Permitted: Yes  
Wet space: No  
Addition: No  
Conversion: No

## 9 Floor 2 - Bath



Dimensions: 5'2" x 3'3"  
Area: 17 sq. ft  
Counted as living area: Yes

Heated: Yes  
Finished: Yes  
Enclosed: Yes  
Contiguous: Yes  
Permitted: Yes  
Wet space: Yes  
Addition: No  
Conversion: No

## 10 Floor 2 - Office



Dimensions: 9'11" x 13'11"  
Area: 137 sq. ft  
Counted as living area: Yes

Heated: Yes  
Finished: Yes  
Enclosed: Yes  
Contiguous: Yes  
Permitted: Yes  
Wet space: No  
Addition: No  
Conversion: No

## 11 Floor 2 - WC



Dimensions: 5'2" x 4'9"  
Area: 25 sq. ft  
Counted as living area: Yes

Heated: Yes  
Finished: Yes  
Enclosed: Yes  
Contiguous: Yes  
Permitted: Yes  
Wet space: No  
Addition: No  
Conversion: No

## 12 Floor 2 - Family Room



Dimensions: 27'7" x 19'8"  
Area: 468 sq. ft  
Counted as living area: Yes

Heated: Yes  
Finished: Yes  
Enclosed: Yes  
Contiguous: Yes  
Permitted: Yes  
Wet space: No  
Addition: No  
Conversion: No

## 13 Floor 2 - Garage



Dimensions: 29'4" x 25'3"  
Area: 722 sq. ft  
Counted as living area: No

Heated: No  
Finished: No  
Enclosed: Yes  
Contiguous: Yes  
Permitted: Yes  
Wet space: No  
Addition: No  
Conversion: No

## 14 Floor 2 - Hall



Dimensions: 7'6" x 6'8"  
Area: 50 sq. ft  
Counted as living area: Yes

Heated: Yes  
Finished: Yes  
Enclosed: Yes  
Contiguous: Yes  
Permitted: Yes  
Wet space: No  
Addition: No  
Conversion: No

## 15 Floor 2 - Living Room



Dimensions: 15'7" x 15'3"  
Area: 213 sq. ft  
Counted as living area: Yes

Heated: Yes  
Finished: Yes  
Enclosed: Yes  
Contiguous: Yes  
Permitted: Yes  
Wet space: No  
Addition: No  
Conversion: No

## 16 Floor 2 - Porch



Dimensions: 7'4" x 6'1"  
Area: 45 sq. ft  
Counted as living area: No

Heated: No  
Finished: Yes  
Enclosed: No  
Contiguous: Yes  
Permitted: Yes  
Wet space: No  
Addition: No  
Conversion: No

## 17 Floor 2 - Dining Room



Dimensions: 15'7" x 11'11"  
Area: 167 sq. ft  
Counted as living area: Yes

Heated: Yes  
Finished: Yes  
Enclosed: Yes  
Contiguous: Yes  
Permitted: Yes  
Wet space: No  
Addition: No  
Conversion: No

## 18 Floor 2 - Kitchen



Dimensions: 15'6" x 19'3"  
Area: 267 sq. ft  
Counted as living area: Yes

Heated: Yes  
Finished: Yes  
Enclosed: Yes  
Contiguous: Yes  
Permitted: Yes  
Wet space: No  
Addition: No  
Conversion: No

## 19 Floor 2 - Foyer



Dimensions: 7'6" x 10'0"  
Area: 75 sq. ft  
Counted as living area: Yes

Heated: Yes  
Finished: Yes  
Enclosed: Yes  
Contiguous: Yes  
Permitted: Yes  
Wet space: No  
Addition: No  
Conversion: No

## 20 Floor 2 - Deck



Dimensions: 3'4" x 4'0"  
Area: 69 sq. ft  
Counted as living area: No

Heated: No  
Finished: Yes  
Enclosed: No  
Contiguous: Yes  
Permitted: Yes  
Wet space: No  
Addition: No  
Conversion: No

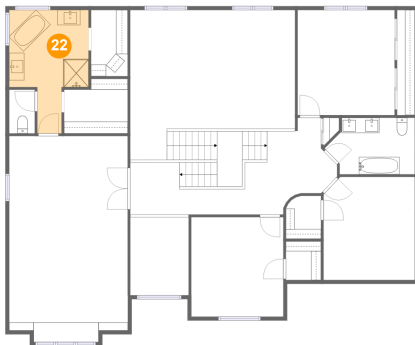
## 21 Floor 2 - Screened Porch



Dimensions: 13'5" x 14'11"  
Area: 202 sq. ft  
Counted as living area: No

Heated: No  
Finished: Yes  
Enclosed: No  
Contiguous: Yes  
Permitted: Yes  
Wet space: No  
Addition: No  
Conversion: No

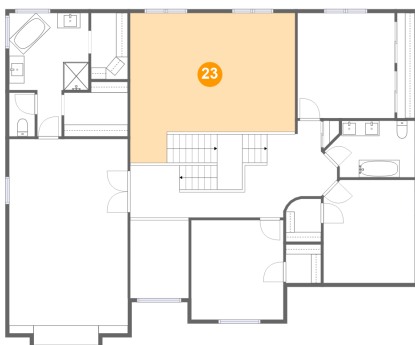
## 22 Floor 3 - Primary Bath



Dimensions: 10'5" x 16'3"  
Area: 125 sq. ft  
Counted as living area: Yes

Heated: Yes  
Finished: Yes  
Enclosed: Yes  
Contiguous: Yes  
Permitted: Yes  
Wet space: Yes  
Addition: No  
Conversion: No

## 23 Floor 3 - Open To Below



Dimensions: 21'8" x 19'8"  
Area: 358 sq. ft  
Counted as living area: No

Heated: No  
Finished: No  
Enclosed: No  
Contiguous: Yes  
Permitted: No  
Wet space: No  
Addition: No  
Conversion: No

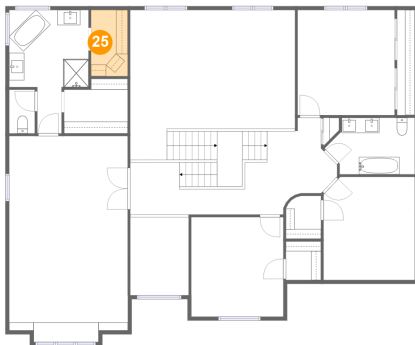
### 24 Floor 3 - Bath



Dimensions: 11'10" x 7'5"  
Area: 77 sq. ft  
Counted as living area: Yes

Heated: Yes  
Finished: Yes  
Enclosed: Yes  
Contiguous: Yes  
Permitted: Yes  
Wet space: Yes  
Addition: No  
Conversion: No

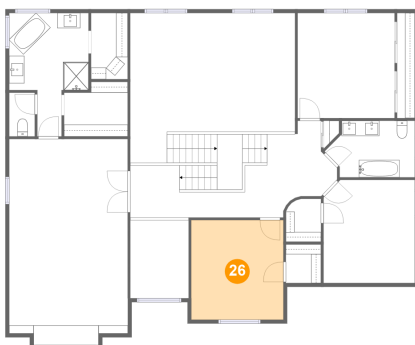
### 25 Floor 3 - W.I.C.



Dimensions: 4'10" x 8'8"  
Area: 42 sq. ft  
Counted as living area: Yes

Heated: Yes  
Finished: Yes  
Enclosed: Yes  
Contiguous: Yes  
Permitted: Yes  
Wet space: No  
Addition: No  
Conversion: No

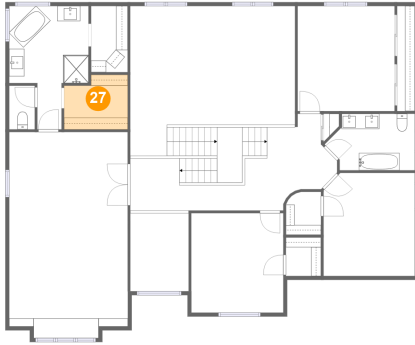
### 26 Floor 3 - Bedroom



Dimensions: 12'1" x 13'1"  
Area: 158 sq. ft  
Counted as living area: Yes

Heated: Yes  
Finished: Yes  
Enclosed: Yes  
Contiguous: Yes  
Permitted: Yes  
Wet space: No  
Addition: No  
Conversion: No

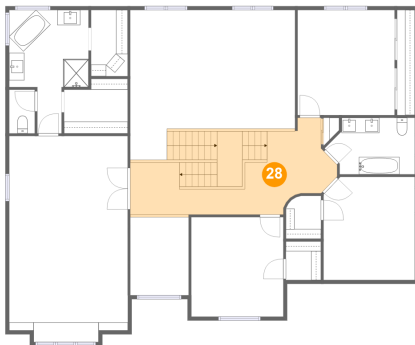
### 27 Floor 3 - W.I.C.



Dimensions: 8'4" x 7'2"  
Area: 55 sq. ft  
Counted as living area: Yes

Heated: Yes  
Finished: Yes  
Enclosed: Yes  
Contiguous: Yes  
Permitted: Yes  
Wet space: No  
Addition: No  
Conversion: No

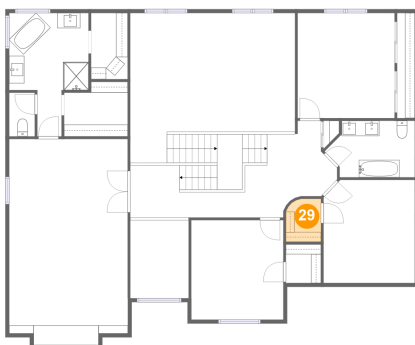
### 28 Floor 3 - Hall



Dimensions: 25'7" x 10'11"  
Area: 267 sq. ft  
Counted as living area: Yes

Heated: Yes  
Finished: Yes  
Enclosed: Yes  
Contiguous: Yes  
Permitted: Yes  
Wet space: No  
Addition: No  
Conversion: No

### 29 Floor 3 - W.I.C.

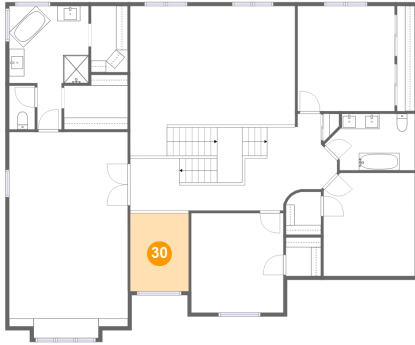


Dimensions: 4'7" x 5'8"  
Area: 25 sq. ft  
Counted as living area: Yes

Heated: Yes  
Finished: Yes  
Enclosed: Yes  
Contiguous: Yes  
Permitted: Yes  
Wet space: No  
Addition: No  
Conversion: No



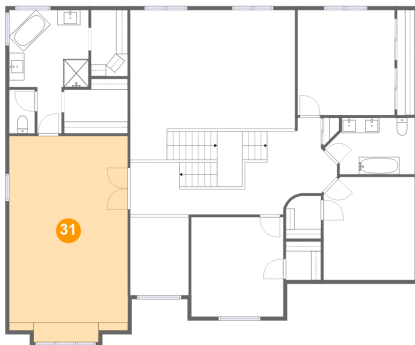
### 30 Floor 3 - Open To Below



Dimensions: 7'8" x 10'3"  
Area: 79 sq. ft  
Counted as living area: No

Heated: No  
Finished: No  
Enclosed: No  
Contiguous: Yes  
Permitted: No  
Wet space: No  
Addition: No  
Conversion: No

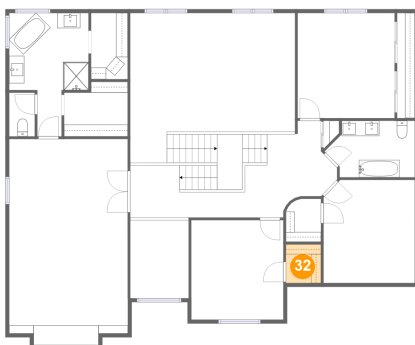
### 31 Floor 3 - Primary Bedroom



Dimensions: 15'7" x 27'1"  
Area: 412 sq. ft  
Counted as living area: Yes

Heated: Yes  
Finished: Yes  
Enclosed: Yes  
Contiguous: Yes  
Permitted: Yes  
Wet space: No  
Addition: No  
Conversion: No

### 32 Floor 3 - W.I.C.



Dimensions: 4'7" x 5'1"  
Area: 23 sq. ft  
Counted as living area: Yes

Heated: Yes  
Finished: Yes  
Enclosed: Yes  
Contiguous: Yes  
Permitted: Yes  
Wet space: No  
Addition: No  
Conversion: No

### 33 Floor 3 - WC



Dimensions: 3'4" x 5'9"  
Area: 19 sq. ft  
Counted as living area: Yes

Heated: Yes  
Finished: Yes  
Enclosed: Yes  
Contiguous: Yes  
Permitted: Yes  
Wet space: No  
Addition: No  
Conversion: No

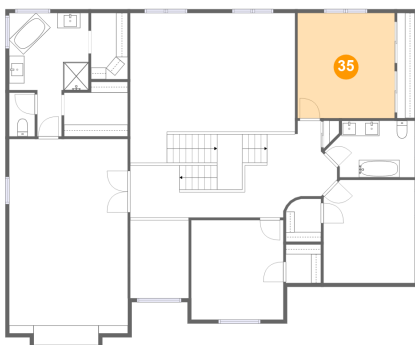
### 34 Floor 3 - Bedroom



Dimensions: 12'0" x 13'7"  
Area: 160 sq. ft  
Counted as living area: Yes

Heated: Yes  
Finished: Yes  
Enclosed: Yes  
Contiguous: Yes  
Permitted: Yes  
Wet space: No  
Addition: No  
Conversion: No

### 35 Floor 3 - Bedroom



Dimensions: 12'9" x 13'10"  
Area: 176 sq. ft  
Counted as living area: Yes

Heated: Yes  
Finished: Yes  
Enclosed: Yes  
Contiguous: Yes  
Permitted: Yes  
Wet space: No  
Addition: No  
Conversion: No