

822 Gilmer Avenue Northwest, Gilmer, Roanoke, Virginia, United States, 24016



Property Summary

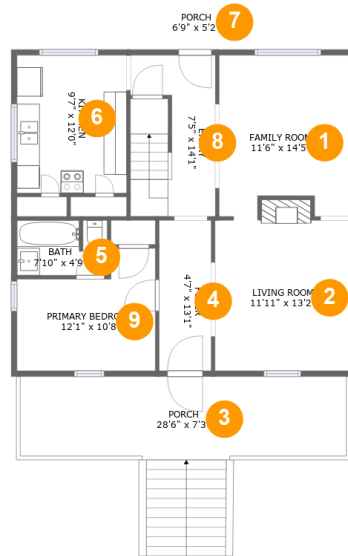
0 garages **4** bedrooms **2** bathrooms **0** half baths

2 floors

1,560 Gross Living Area sqft

1,848 total sqft

822 Gilmer Avenue Northwest, Gilmer, Roanoke, Roanoke, Virginia, United States, 24016



Room Dimensions

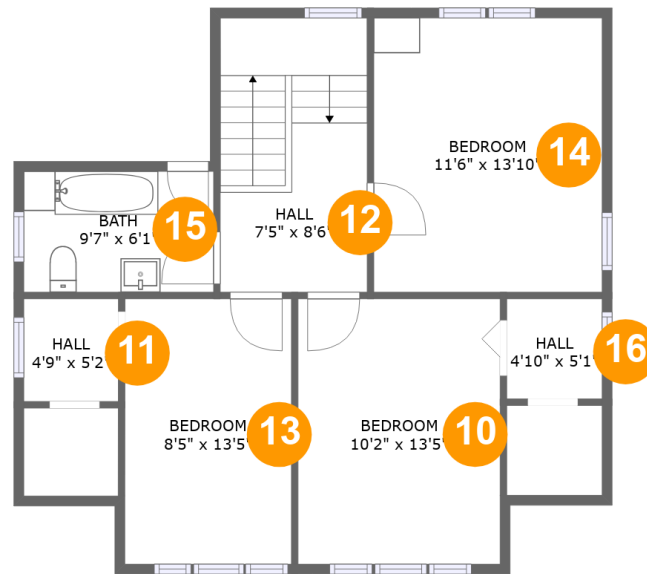
Floor 1

Total sqft: 1097

Living area: 862

#	Room name	Dimensions	Area (sqft)	Counted as Living Area
1	Family Room	11'6" x 14'5"	154 sq. ft	Yes
2	Living Room	11'11" x 13'2"	164 sq. ft	Yes
3	Porch	28'6" x 7'3"	201 sq. ft	No
4	Foyer	4'7" x 13'1"	60 sq. ft	Yes
5	Bath	7'10" x 4'9"	37 sq. ft	Yes
6	Kitchen	9'7" x 12'0"	115 sq. ft	Yes
7	Porch	6'9" x 5'2"	35 sq. ft	No
8	Entry	7'5" x 14'1"	102 sq. ft	Yes
9	Primary Bedroom	12'1" x 10'8"	107 sq. ft	Yes

822 Gilmer Avenue Northwest, Gilmer, Roanoke, Roanoke, Virginia, United States, 24016



Room Dimensions

Floor 2

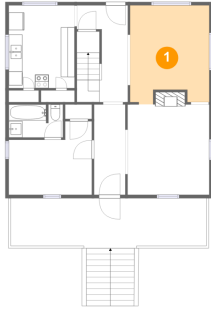
Total sqft: 751

Living area: 698

#	Room name	Dimensions	Area (sqft)	Counted as Living Area
10	Bedroom	10'2" x 13'5"	137 sq. ft	Yes
11	Hall	4'9" x 5'2"	25 sq. ft	Yes
12	Hall	7'5" x 8'6"	103 sq. ft	Yes
13	Bedroom	8'5" x 13'5"	113 sq. ft	Yes
14	Bedroom	11'6" x 13'10"	160 sq. ft	Yes
15	Bath	9'7" x 6'1"	58 sq. ft	Yes
16	Hall	4'10" x 5'1"	24 sq. ft	Yes

822 Gilmer Avenue Northwest, Gilmer, Roanoke, Roanoke, Virginia, United States, 24016

1 Floor 1 - Family Room



Dimensions: 11'6" x 14'5"
Area: 154 sq. ft
Counted as Living Area:
Yes

Heated: Yes
Finished: Yes
Enclosed: Yes
Contiguous:
Yes
Permitted: Yes
Wet Space: No
Addition: No
Conversion: No

2 Floor 1 - Living Room

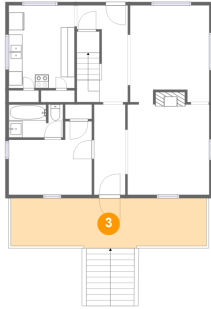


Dimensions: 11'11" x 13'2"
Area: 164 sq. ft
Counted as Living Area:
Yes

Heated: Yes
Finished: Yes
Enclosed: Yes
Contiguous:
Yes
Permitted: Yes
Wet Space: No
Addition: No
Conversion: No

822 Gilmer Avenue Northwest, Gilmer, Roanoke, Roanoke, Virginia, United States, 24016

3 Floor 1 - Porch



Dimensions: 28'6" x 7'3"
Area: 201 sq. ft
Counted as Living Area: No

Heated: No
Finished: Yes
Enclosed: No
Contiguous: Yes
Permitted: Yes
Wet Space: No
Addition: No
Conversion: No

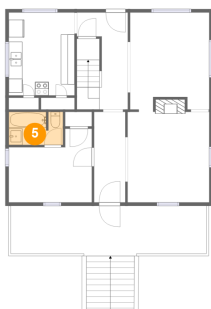
4 Floor 1 - Foyer



Dimensions: 4'7" x 13'1"
Area: 60 sq. ft
Counted as Living Area:
Yes

Heated: Yes
Finished: Yes
Enclosed: Yes
Contiguous:
Yes
Permitted: Yes
Wet Space: No
Addition: No
Conversion: No

5 Floor 1 - Bath

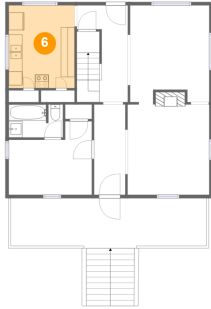


Dimensions: 7'10" x 4'9"
Area: 37 sq. ft
Counted as Living Area:
Yes

Heated: Yes
Finished: Yes
Enclosed: Yes
Contiguous:
Yes
Permitted: Yes
Wet Space: Yes
Addition: No
Conversion: No

822 Gilmer Avenue Northwest, Gilmer, Roanoke, Roanoke, Virginia, United States, 24016

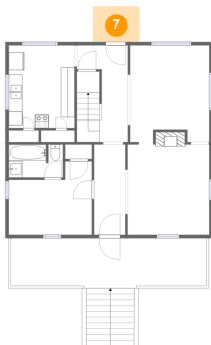
6 Floor 1 - Kitchen



Dimensions: 9'7" x 12'0"
Area: 115 sq. ft
Counted as Living Area:
Yes

Heated: Yes
Finished: Yes
Enclosed: Yes
Contiguous:
Yes
Permitted: Yes
Wet Space: No
Addition: No
Conversion: No

7 Floor 1 - Porch



Dimensions: 6'9" x 5'2"
Area: 35 sq. ft
Counted as Living Area: No

Heated: No
Finished: Yes
Enclosed: No
Contiguous: Yes
Permitted: Yes
Wet Space: No
Addition: No
Conversion: No

8 Floor 1 - Entry

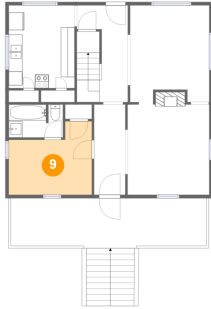


Dimensions: 7'5" x 14'1"
Area: 102 sq. ft
Counted as Living Area:
Yes

Heated: Yes
Finished: Yes
Enclosed: Yes
Contiguous:
Yes
Permitted: Yes
Wet Space: No
Addition: No
Conversion: No

822 Gilmer Avenue Northwest, Gilmer, Roanoke, Roanoke, Virginia, United States, 24016

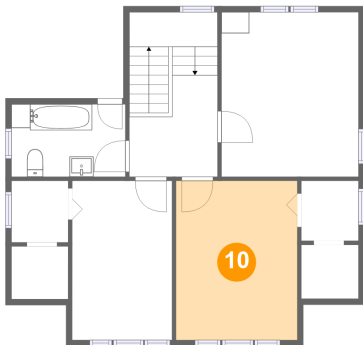
9 Floor 1 - Primary Bedroom



Dimensions: 12'1" x 10'8"
Area: 107 sq. ft
Counted as Living Area:
Yes

Heated: Yes
Finished: Yes
Enclosed: Yes
Contiguous:
Yes
Permitted: Yes
Wet Space: No
Addition: No
Conversion: No

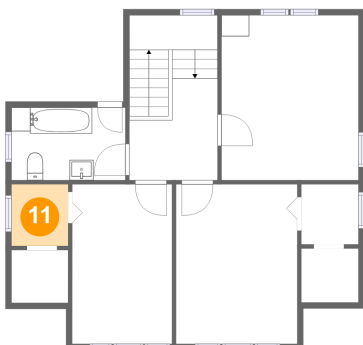
10 Floor 2 - Bedroom



Dimensions: 10'2" x 13'5"
Area: 137 sq. ft
Counted as Living Area:
Yes

Heated: Yes
Finished: Yes
Enclosed: Yes
Contiguous:
Yes
Permitted: Yes
Wet Space: No
Addition: No
Conversion: No

11 Floor 2 - Hall

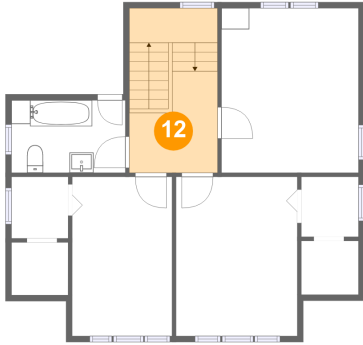


Dimensions: 4'9" x 5'2"
Area: 25 sq. ft
Counted as Living Area:
Yes

Heated: Yes
Finished: Yes
Enclosed: Yes
Contiguous:
Yes
Permitted: Yes
Wet Space: No
Addition: No
Conversion: No

822 Gilmer Avenue Northwest, Gilmer, Roanoke, Roanoke, Virginia, United States, 24016

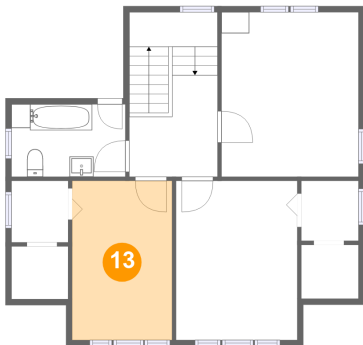
12 Floor 2 - Hall



Dimensions: 7'5" x 8'6"
Area: 103 sq. ft
Counted as Living Area:
Yes

Heated: Yes
Finished: Yes
Enclosed: Yes
Contiguous:
Yes
Permitted: Yes
Wet Space: No
Addition: No
Conversion: No

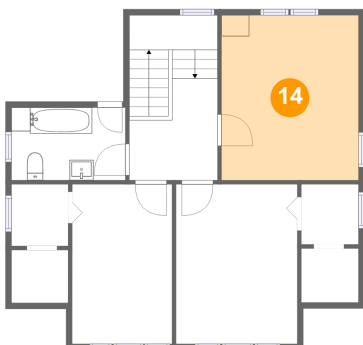
13 Floor 2 - Bedroom



Dimensions: 8'5" x 13'5"
Area: 113 sq. ft
Counted as Living Area:
Yes

Heated: Yes
Finished: Yes
Enclosed: Yes
Contiguous:
Yes
Permitted: Yes
Wet Space: No
Addition: No
Conversion: No

14 Floor 2 - Bedroom

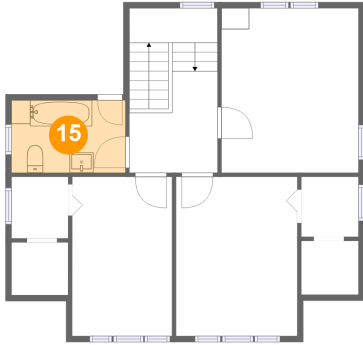


Dimensions: 11'6" x 13'10"
Area: 160 sq. ft
Counted as Living Area:
Yes

Heated: Yes
Finished: Yes
Enclosed: Yes
Contiguous:
Yes
Permitted: Yes
Wet Space: No
Addition: No
Conversion: No

822 Gilmer Avenue Northwest, Gilmer, Roanoke, Roanoke, Virginia, United States, 24016

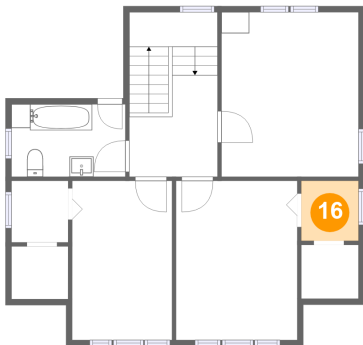
15 Floor 2 - Bath



Dimensions: 9'7" x 6'1"
Area: 58 sq. ft
Counted as Living Area:
Yes

Heated: Yes
Finished: Yes
Enclosed: Yes
Contiguous:
Yes
Permitted: Yes
Wet Space: Yes
Addition: No
Conversion: No

16 Floor 2 - Hall



Dimensions: 4'10" x 5'1"
Area: 24 sq. ft
Counted as Living Area:
Yes

Heated: Yes
Finished: Yes
Enclosed: Yes
Contiguous:
Yes
Permitted: Yes
Wet Space: No
Addition: No
Conversion: No