





Home Data Report


20011 152nd Street Court East, Tehaleh, Bonney Lake, Pierce County, Washington, United States,



Property Summary

 1 garages  5 bedrooms  3 bathrooms  0 half baths

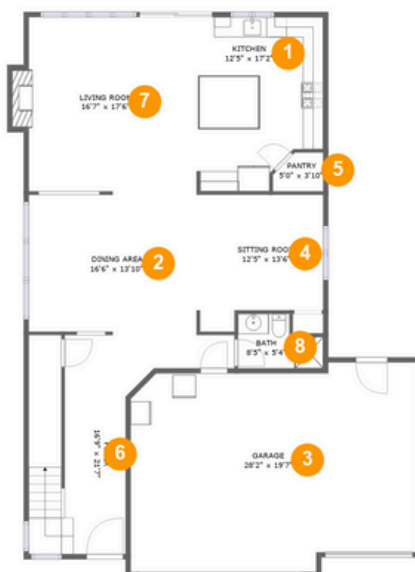
 2 floors

 2,963 Gross Living Area sqft

 3,542 total sqft

Home Data Report

20011 152nd Street Court East, Tehaleh, Bonney Lake, Pierce County, Washington, United States,



Room Dimensions

Floor 1

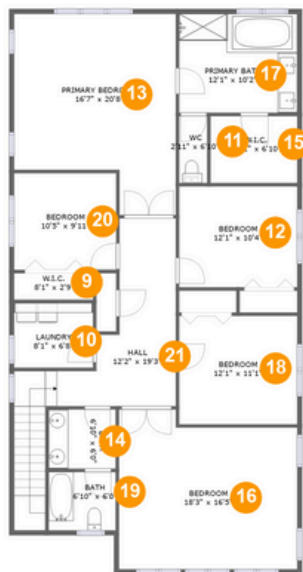
Total sqft: 1846

Living area: 1267

#	Room name	Dimensions	Area (sqft)	Counted as Living Area
1	Kitchen	12'5" x 17'2"	195 sq. ft	Yes
2	Dining Area	16'6" x 13'10"	227 sq. ft	Yes
3	Garage	28'2" x 19'7"	539 sq. ft	No
4	Sitting Room	12'5" x 13'6"	149 sq. ft	Yes
5	Pantry	5'0" x 3'10"	17 sq. ft	Yes
6	Foyer	16'9" x 21'7"	240 sq. ft	Yes
7	Living Room	16'7" x 17'6"	299 sq. ft	Yes
8	Bath	8'5" x 5'4"	38 sq. ft	Yes

Home Data Report

20011 152nd Street Court East, Tehaleh, Bonney Lake, Pierce County, Washington, United States,



Room Dimensions

Floor 2

Total sqft: 1696

Living area: 1696

#	Room name	Dimensions	Area (sqft)	Counted as Living Area
9	W.i.c.	8'1" x 2'9"	22 sq. ft	Yes
10	Laundry	8'1" x 6'8"	54 sq. ft	Yes
11	Wc	2'11" x 6'10"	20 sq. ft	Yes
12	Bedroom	12'1" x 10'4"	125 sq. ft	Yes
13	Primary Bedroom	16'7" x 20'8"	292 sq. ft	Yes
14	Bath	6'10" x 6'0"	42 sq. ft	Yes
15	W.i.c.	8'11" x 6'10"	61 sq. ft	Yes
16	Bedroom	18'3" x 16'5"	276 sq. ft	Yes
17	Primary Bath	12'1" x 10'2"	123 sq. ft	Yes
18	Bedroom	12'1" x 11'1"	135 sq. ft	Yes
19	Bath	6'10" x 6'0"	41 sq. ft	Yes

Scan captured on Tue, 04 Jun 2024 21:20:22 GMT

Information is calculated by CubiCasa technology; deemed highly reliable but not guaranteed.

Home Data Report

20011 152nd Street Court East, Tehaleh, Bonney Lake, Pierce County, Washington, United States,

#	Room name	Dimensions	Area (sqft)	Counted as Living Area
20	Bedroom	10'5" x 9'11"	104 sq. ft	Yes
21	Hall	12'2" x 19'3"	200 sq. ft	Yes

20011 152nd Street Court East, Tehaleh, Bonney Lake, Pierce County, Washington, United States,

1 Floor 1 - Kitchen



Dimensions: 12'5" x 17'2"
Area: 195 sq. ft
Counted as Living Area:
Yes

Heated: Yes
Finished: Yes
Enclosed: Yes
Contiguous:
Yes Permitted:
Yes Wet
Space: No
Addition: No
Conversion: No

2 Floor 1 - Dining Area



Dimensions: 16'6" x 13'10"
Area: 227 sq. ft
Counted as Living Area:
Yes

Heated: Yes
Finished: Yes
Enclosed: Yes
Contiguous:
Yes Permitted:
Yes Wet
Space: No
Addition: No
Conversion: No

20011 152nd Street Court East, Tehaleh, Bonney Lake, Pierce County, Washington, United States,

3 Floor 1 - Garage



Dimensions: 28'2" x 19'7"
Area: 539 sq. ft
Counted as Living Area: No

Heated: No
Finished: No
Enclosed: Yes
Contiguous: Yes
Permitted: Yes
Wet Space: No
Addition: No
Conversion: No

4 Floor 1 - Sitting Room



Dimensions: 12'5" x 13'6"
Area: 149 sq. ft
Counted as Living Area: Yes

Heated: Yes
Finished: Yes
Enclosed: Yes
Contiguous: Yes
Permitted: Yes
Wet Space: No
Addition: No
Conversion: No

5 Floor 1 - Pantry



Dimensions: 5'0" x 3'10"
Area: 17 sq. ft
Counted as Living Area: Yes

Heated: Yes
Finished: Yes
Enclosed: Yes
Contiguous: Yes
Permitted: Yes
Wet Space: No
Addition: No
Conversion: No

20011 152nd Street Court East, Tehaleh, Bonney Lake, Pierce County, Washington, United States,

6 Floor 1 - Foyer



Dimensions: 16'9" x 21'7"
Area: 240 sq. ft
Counted as Living Area:
Yes

Heated: Yes
Finished: Yes
Enclosed: Yes
Contiguous:
Yes Permitted:
Yes Wet
Space: No
Addition: No
Conversion: No

7 Floor 1 - Living Room



Dimensions: 16'7" x 17'6"
Area: 299 sq. ft
Counted as Living Area:
Yes

Heated: Yes
Finished: Yes
Enclosed: Yes
Contiguous:
Yes Permitted:
Yes Wet
Space: No
Addition: No
Conversion: No

8 Floor 1 - Bath

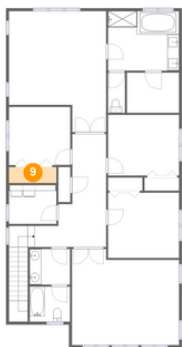


Dimensions: 8'5" x 5'4"
Area: 38 sq. ft
Counted as Living Area:
Yes

Heated: Yes
Finished: Yes
Enclosed: Yes
Contiguous:
Yes
Permitted: Yes
Wet Space: Yes
Addition: No
Conversion: No

20011 152nd Street Court East, Tehaleh, Bonney Lake, Pierce County, Washington, United States,

9 Floor 2 - W.i.c.



Dimensions: 8'1" x 2'9"
Area: 22 sq. ft
Counted as Living Area:
Yes

Heated: Yes
Finished: Yes
Enclosed: Yes
Contiguous:
Yes Permitted:
Yes Wet
Space: No
Addition: No
Conversion: No

10 Floor 2 - Laundry



Dimensions: 8'1" x 6'8"
Area: 54 sq. ft
Counted as Living Area:
Yes

Heated: Yes
Finished: Yes
Enclosed: Yes
Contiguous:
Yes Permitted:
Yes Wet
Space: No
Addition: No
Conversion: No

11 Floor 2 - Wc



Dimensions: 2'11" x 6'10"
Area: 20 sq. ft
Counted as Living Area:
Yes

Heated: Yes
Finished: Yes
Enclosed: Yes
Contiguous:
Yes
Permitted: Yes
Wet Space: Yes
Addition: No
Conversion: No

20011 152nd Street Court East, Tehaleh, Bonney Lake, Pierce County, Washington, United States,

12 Floor 2 - Bedroom



Dimensions: 12'1" x 10'4"
Area: 125 sq. ft
Counted as Living Area:
Yes

Heated: Yes
Finished: Yes
Enclosed: Yes
Contiguous:
Yes Permitted:
Yes Wet
Space: No
Addition: No
Conversion: No

13 Floor 2 - Primary Bedroom



Dimensions: 16'7" x 20'8"
Area: 292 sq. ft
Counted as Living Area:
Yes

Heated: Yes
Finished: Yes
Enclosed: Yes
Contiguous:
Yes Permitted:
Yes Wet
Space: No
Addition: No
Conversion: No

14 Floor 2 - Bath



Dimensions: 6'10" x 6'0"
Area: 42 sq. ft
Counted as Living Area:
Yes

Heated: Yes
Finished: Yes
Enclosed: Yes
Contiguous:
Yes
Permitted: Yes
Wet Space: Yes
Addition: No
Conversion: No

20011 152nd Street Court East, Tehaleh, Bonney Lake, Pierce County, Washington, United States,

15 Floor 2 - W.i.c.



Dimensions: 8'11" x 6'10"
Area: 61 sq. ft
Counted as Living Area:
Yes

Heated: Yes
Finished: Yes
Enclosed: Yes
Contiguous:
Yes Permitted:
Yes Wet
Space: No
Addition: No
Conversion: No

16 Floor 2 - Bedroom



Dimensions: 18'3" x 16'5"
Area: 276 sq. ft
Counted as Living Area:
Yes

Heated: Yes
Finished: Yes
Enclosed: Yes
Contiguous:
Yes Permitted:
Yes Wet
Space: No
Addition: No
Conversion: No

17 Floor 2 - Primary Bath



Dimensions: 12'1" x 10'2"
Area: 123 sq. ft
Counted as Living Area:
Yes

Heated: Yes
Finished: Yes
Enclosed: Yes
Contiguous:
Yes Permitted: Yes
Wet Space: Yes
Addition: No
Conversion: No

20011 152nd Street Court East, Tehaleh, Bonney Lake, Pierce County, Washington, United States,

18 Floor 2 - Bedroom



Dimensions: 12'1" x 11'1"
Area: 135 sq. ft
Counted as Living Area:
Yes

Heated: Yes
Finished: Yes
Enclosed: Yes
Contiguous:
Yes Permitted:
Yes Wet
Space: No
Addition: No
Conversion: No

19 Floor 2 - Bath



Dimensions: 6'10" x 6'0"
Area: 41 sq. ft
Counted as Living Area:
Yes

Heated: Yes
Finished: Yes
Enclosed: Yes
Contiguous:
Yes
Permitted: Yes
Wet Space: Yes
Addition: No
Conversion: No

20 Floor 2 - Bedroom

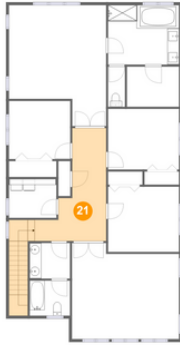


Dimensions: 10'5" x 9'11"
Area: 104 sq. ft
Counted as Living Area:
Yes

Heated: Yes
Finished: Yes
Enclosed: Yes
Contiguous:
Yes Permitted:
Yes Wet
Space: No
Addition: No
Conversion: No

20011 152nd Street Court East, Tehaleh, Bonney Lake, Pierce County, Washington, United States,

21 Floor 2 - Hall



Dimensions: 12'2" x 19'3"
Area: 200 sq. ft
Counted as Living Area:
Yes

Heated: Yes
Finished: Yes
Enclosed: Yes
Contiguous:
Yes Permitted:
Yes Wet
Space: No
Addition: No
Conversion: No