

# Home report

Eastleigh Drive 316  
Belleair

## Highlights



1 Kitchen



3 Living room



4 Bedroom



6 Bath



1 Office



33 Doors



30 Windows

## Nearby services Data source: Google Maps



Fort Harrison Ave S +  
Howard Ct, 0.1 mi



Family Dollar, 1.1 mi



Comprehensive Medical  
Health Solutions, 0.3 mi



O2B Kids Belleair, 0.4 mi

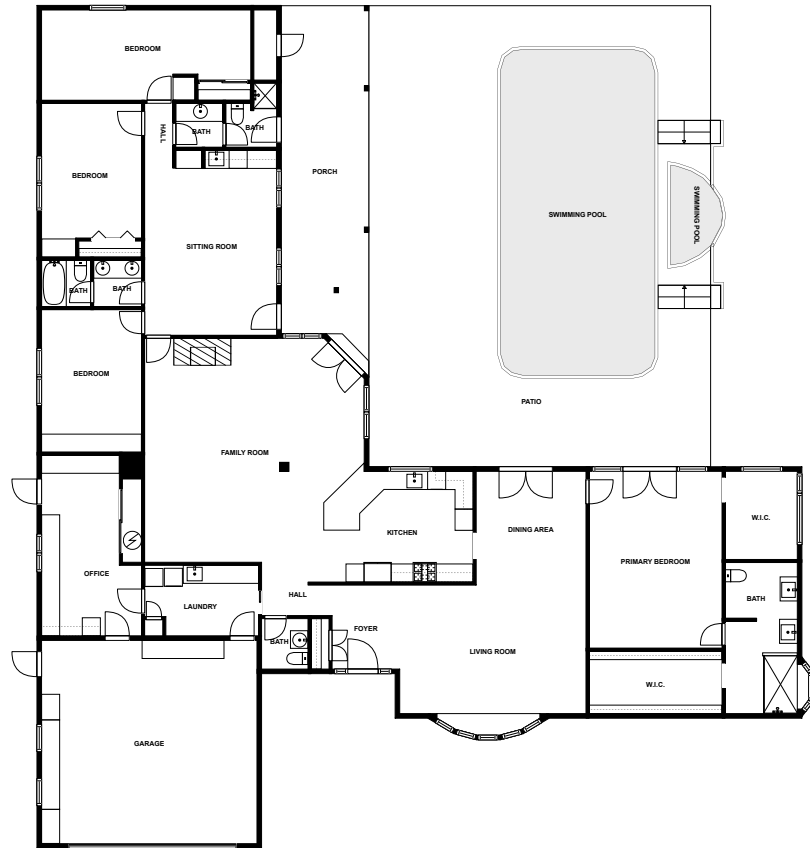


Daily News Restaurant, 0.2  
mi



Morton Plant Hospital  
Heliport, 1.0 mi

# Floor plan



SIZES AND DIMENSIONS ARE APPROXIMATE, ACTUAL MAY VARY.



## Appendix 1: Data sheet

Garage - 1	Dining - 1	Dining - Open - 1
Bath - 6	Bath - Toilet - 1	Closet - 2
Closet - WalkIn - 2	Bedroom - 4	Bedroom - Master - 1
Utility - 1	Utility - Laundry - 1	Office - 1
Outdoor - 2	Outdoor - Porch - 1	Outdoor - Patio - 1
Kitchen - 1	LivingRoom - 3	LivingRoom - Family - 1
LivingRoom - Sitting - 1	Hall - 2	Entry - 1
Entry - Foyer - 1	SwimmingPool - 2	