

Home report

501 Saddlewood Drive, Wirtz, Franklin County, Virginia, United States, 24184



Total Area: 3279 sq. ft

Floor 1: 1154 sq. ft, Floor 2: 1237 sq. ft, Floor 3: 888 sq. ft

Excluded: Electrical room 21 sq. ft, Fireplace 23 sq. ft, Screened porch 399 sq. ft, Porch 197 sq. ft, Patio 1686 sq. ft, Deck 1175 sq. ft, Open to below 279 sq. ft, Low ceiling 25 sq. ft, Walls: 257 sq. ft

Property summary

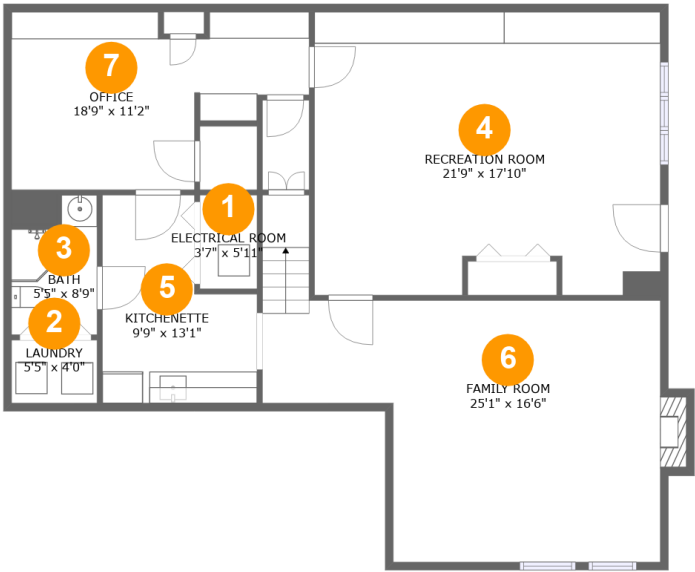
**3**
Floors

**3**
Bedrooms

**3**
Bathrooms

Home report

501 Saddlewood Drive, Wirtz, Franklin County, Virginia, United States, 24184



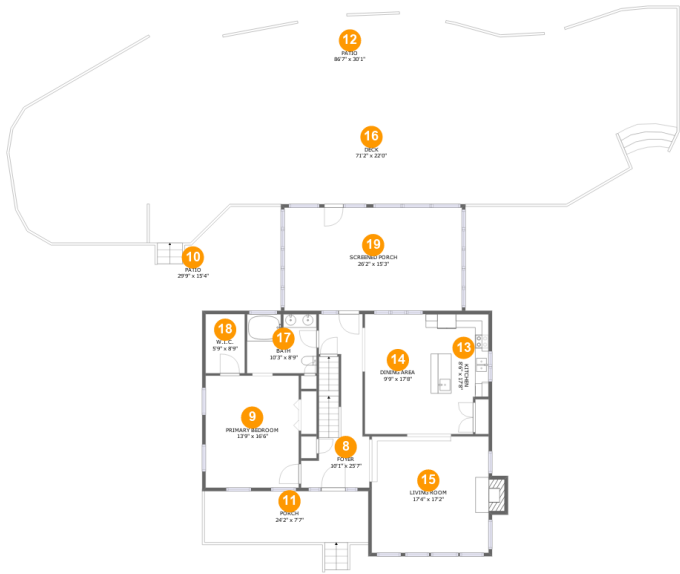
Room dimensions

Floor 1 Total:1154sqft Excluded: 30sqft

#		Max Dimensions	sqft	Included
1	Electrical Room	3'7" x 5'11"	21 sq. ft	No
2	Laundry	5'5" x 4'0"	21 sq. ft	Yes
3	Bath	5'5" x 8'9"	40 sq. ft	Yes
4	Recreation Room	21'9" x 17'10"	372 sq. ft	Yes
5	Kitchenette	9'9" x 13'1"	103 sq. ft	Yes
6	Family Room	25'1" x 16'6"	357 sq. ft	Yes
7	Office	18'9" x 11'2"	167 sq. ft	Yes

Home report

501 Saddlewood Drive, Wirtz, Franklin County, Virginia, United States, 24184



Room dimensions

Floor 2 Total:1237sqft Excluded: 3471sqft

#		Max Dimensions	sqft	Included
8	Foyer	10'1" x 25'7"	180 sq. ft	Yes
9	Primary Bedroom	13'9" x 16'6"	227 sq. ft	Yes
10	Patio	29'9" x 15'4"	355 sq. ft	No
11	Porch	24'2" x 7'7"	197 sq. ft	No
12	Patio	86'7" x 30'1"	1331 sq. ft	No
13	Kitchen	8'6" x 17'8"	138 sq. ft	Yes
14	Dining Area	9'9" x 17'8"	172 sq. ft	Yes
15	Living Room	17'4" x 17'2"	308 sq. ft	Yes
16	Deck	71'2" x 22'0"	1175 sq. ft	No
17	Bath	10'3" x 8'9"	88 sq. ft	Yes
18	W.I.C.	5'9" x 8'9"	50 sq. ft	Yes

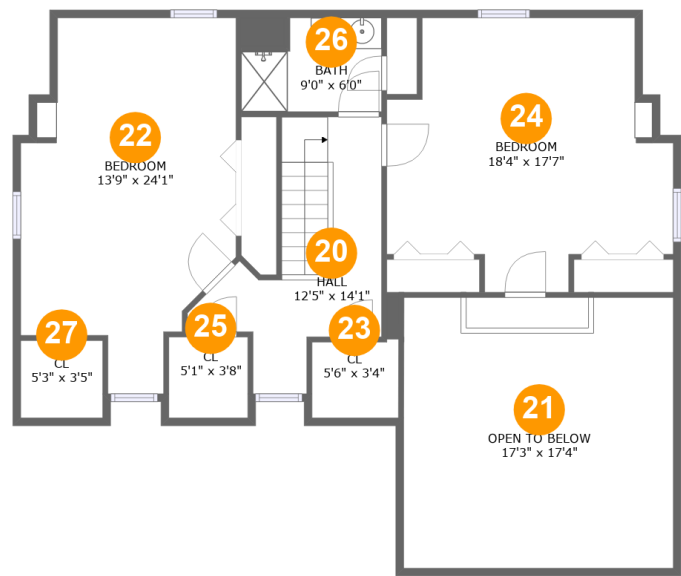
Home report

501 Saddlewood Drive, Wirtz, Franklin County, Virginia, United States, 24184

#		Max Dimensions	sqft	Included
19	Screened Porch	26'2" x 15'3"	399 sq. ft	No

Home report

501 Saddlewood Drive, Wirtz, Franklin County, Virginia, United States, 24184



Room dimensions

Floor 3 Total:888sqft Excluded: 304sqft

#		Max Dimensions	sqft	Included
20	Hall	12'5" x 14'1"	122 sq. ft	Yes
21	Open To Below	17'3" x 17'4"	279 sq. ft	No
22	Bedroom	13'9" x 24'1"	266 sq. ft	Yes
23	Cl	5'6" x 3'4"	18 sq. ft	Yes
24	Bedroom	18'4" x 17'7"	261 sq. ft	Yes
25	Cl	5'1" x 3'8"	18 sq. ft	Yes
26	Bath	9'0" x 6'0"	47 sq. ft	Yes
27	Cl	5'3" x 3'5"	18 sq. ft	Yes

501 Saddlewood Drive, Wirtz, Franklin County, Virginia, United States, 24184

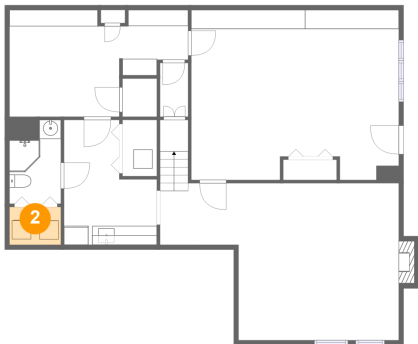
1 Floor 1 - Electrical Room



Max Dimensions: 3'7" x 5'11"
Calculated Area: 21 sq. ft
Included: No

Heated: No
Finished: No
Enclosed: Yes
Contiguous: Yes
Permitted: Yes
Wet space: No
Addition: No
Conversion: No

2 Floor 1 - Laundry

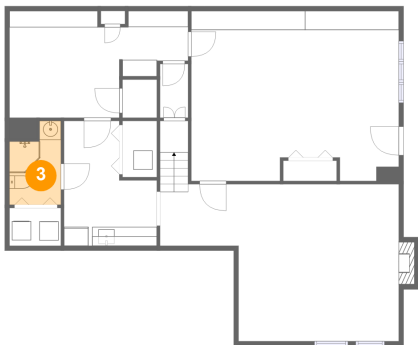


Max Dimensions: 5'5" x 4'0"
Calculated Area: 21 sq. ft
Included: Yes

Heated: Yes
Finished: Yes
Enclosed: Yes
Contiguous: Yes
Permitted: Yes
Wet space: No
Addition: No
Conversion: No

501 Saddlewood Drive, Wirtz, Franklin County, Virginia, United States, 24184

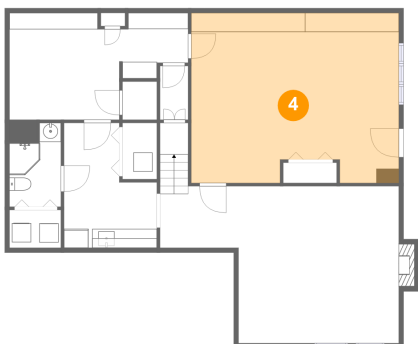
3 Floor 1 - Bath



Max Dimensions: 5'5" x 8'9"
Calculated Area: 40 sq. ft
Included: Yes

Heated: Yes
Finished: Yes
Enclosed: Yes
Contiguous: Yes
Permitted: Yes
Wet space: Yes
Addition: No
Conversion: No

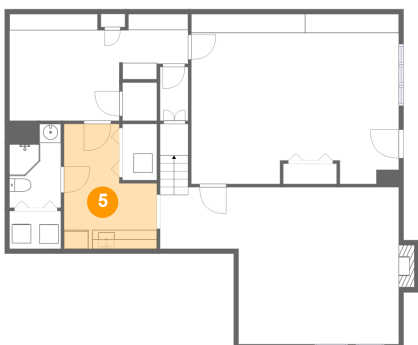
4 Floor 1 - Recreation Room



Max Dimensions: 21'9" x 17'10"
Calculated Area: 372 sq. ft
Included: Yes

Heated: Yes
Finished: Yes
Enclosed: Yes
Contiguous: Yes
Permitted: Yes
Wet space: No
Addition: No
Conversion: No

5 Floor 1 - Kitchenette

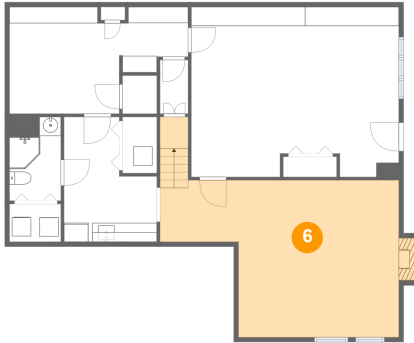


Max Dimensions: 9'9" x 13'1"
Calculated Area: 103 sq. ft
Included: Yes

Heated: Yes
Finished: Yes
Enclosed: Yes
Contiguous: Yes
Permitted: Yes
Wet space: No
Addition: No
Conversion: No

501 Saddlewood Drive, Wirtz, Franklin County, Virginia, United States, 24184

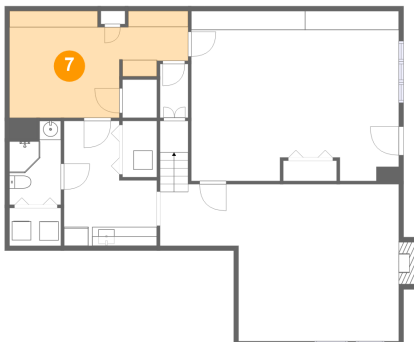
6 Floor 1 - Family Room



Max Dimensions: 25'1" x 16'6"
Calculated Area: 357 sq. ft
Included: Yes

Heated: Yes
Finished: Yes
Enclosed: Yes
Contiguous: Yes
Permitted: Yes
Wet space: No
Addition: No
Conversion: No

7 Floor 1 - Office



Max Dimensions: 18'9" x 11'2"
Calculated Area: 167 sq. ft
Included: Yes

Heated: Yes
Finished: Yes
Enclosed: Yes
Contiguous: Yes
Permitted: Yes
Wet space: No
Addition: No
Conversion: No

8 Floor 2 - Foyer

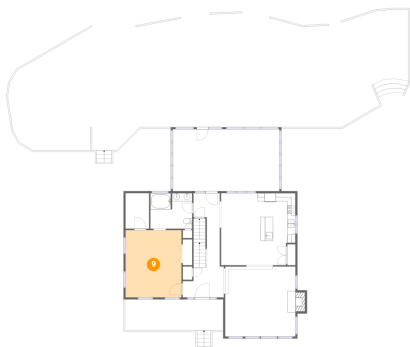


Max Dimensions: 10'1" x 25'7"
Calculated Area: 180 sq. ft
Included: Yes

Heated: Yes
Finished: Yes
Enclosed: Yes
Contiguous: Yes
Permitted: Yes
Wet space: No
Addition: No
Conversion: No

501 Saddlewood Drive, Wirtz, Franklin County, Virginia, United States, 24184

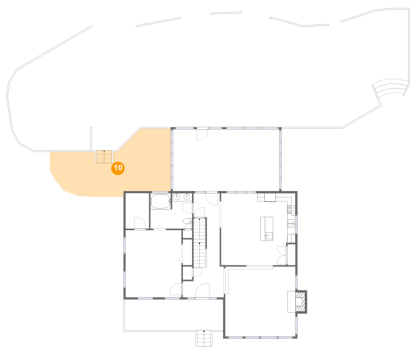
9 Floor 2 - Primary Bedroom



Max Dimensions: 13'9" x 16'6"
Calculated Area: 227 sq. ft
Included: Yes

Heated: Yes
Finished: Yes
Enclosed: Yes
Contiguous: Yes
Permitted: Yes
Wet space: No
Addition: No
Conversion: No

10 Floor 2 - Patio



Max Dimensions: 29'9" x 15'4"
Calculated Area: 355 sq. ft
Included: No

Heated: No
Finished: Yes
Enclosed: No
Contiguous: Yes
Permitted: Yes
Wet space: No
Addition: No
Conversion: No

11 Floor 2 - Porch

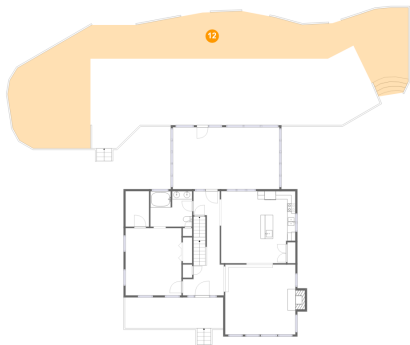


Max Dimensions: 24'2" x 7'7"
Calculated Area: 197 sq. ft
Included: No

Heated: No
Finished: Yes
Enclosed: No
Contiguous: Yes
Permitted: Yes
Wet space: No
Addition: No
Conversion: No

501 Saddlewood Drive, Wirtz, Franklin County, Virginia, United States, 24184

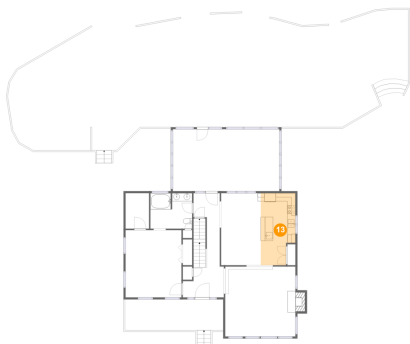
12 Floor 2 - Patio



Max Dimensions: 86'7" x 30'1"
Calculated Area: 1331 sq. ft
Included: No

Heated: No
Finished: Yes
Enclosed: No
Contiguous: Yes
Permitted: Yes
Wet space: No
Addition: No
Conversion: No

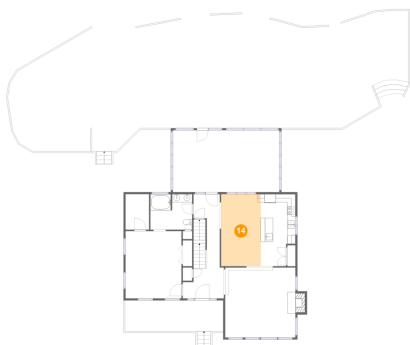
13 Floor 2 - Kitchen



Max Dimensions: 8'6" x 17'8"
Calculated Area: 138 sq. ft
Included: Yes

Heated: Yes
Finished: Yes
Enclosed: Yes
Contiguous: Yes
Permitted: Yes
Wet space: No
Addition: No
Conversion: No

14 Floor 2 - Dining Area



Max Dimensions: 9'9" x 17'8"
Calculated Area: 172 sq. ft
Included: Yes

Heated: Yes
Finished: Yes
Enclosed: Yes
Contiguous: Yes
Permitted: Yes
Wet space: No
Addition: No
Conversion: No

501 Saddlewood Drive, Wirtz, Franklin County, Virginia, United States, 24184

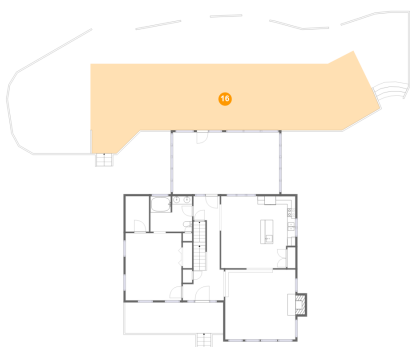
15 Floor 2 - Living Room



Max Dimensions: 17'4" x 17'2"
Calculated Area: 308 sq. ft
Included: Yes

Heated: Yes
Finished: Yes
Enclosed: Yes
Contiguous: Yes
Permitted: Yes
Wet space: No
Addition: No
Conversion: No

16 Floor 2 - Deck



Max Dimensions: 71'2" x 22'0"
Calculated Area: 1175 sq. ft
Included: No

Heated: No
Finished: Yes
Enclosed: No
Contiguous: Yes
Permitted: Yes
Wet space: No
Addition: No
Conversion: No

17 Floor 2 - Bath



Max Dimensions: 10'3" x 8'9"
Calculated Area: 88 sq. ft
Included: Yes

Heated: Yes
Finished: Yes
Enclosed: Yes
Contiguous: Yes
Permitted: Yes
Wet space: Yes
Addition: No
Conversion: No

501 Saddlewood Drive, Wirtz, Franklin County, Virginia, United States, 24184

18 Floor 2 - W.I.C.



Max Dimensions: 5'9" x 8'9"
Calculated Area: 50 sq. ft
Included: Yes

Heated: Yes
Finished: Yes
Enclosed: Yes
Contiguous: Yes
Permitted: Yes
Wet space: No
Addition: No
Conversion: No

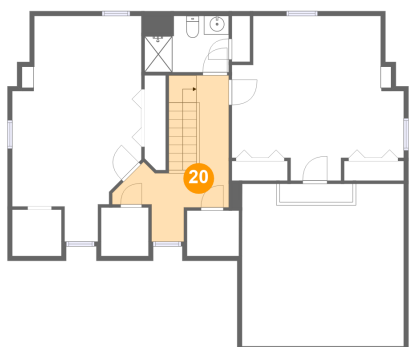
19 Floor 2 - Screened Porch



Max Dimensions: 26'2" x 15'3"
Calculated Area: 399 sq. ft
Included: No

Heated: No
Finished: Yes
Enclosed: No
Contiguous: Yes
Permitted: Yes
Wet space: No
Addition: No
Conversion: No

20 Floor 3 - Hall

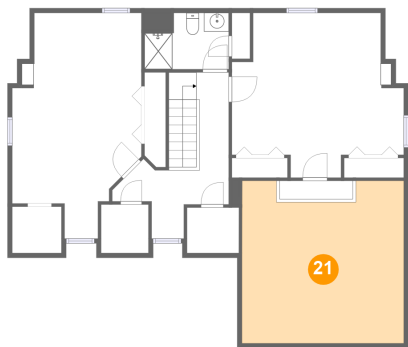


Max Dimensions: 12'5" x 14'1"
Calculated Area: 122 sq. ft
Included: Yes

Heated: Yes
Finished: Yes
Enclosed: Yes
Contiguous: Yes
Permitted: Yes
Wet space: No
Addition: No
Conversion: No

501 Saddlewood Drive, Wirtz, Franklin County, Virginia, United States, 24184

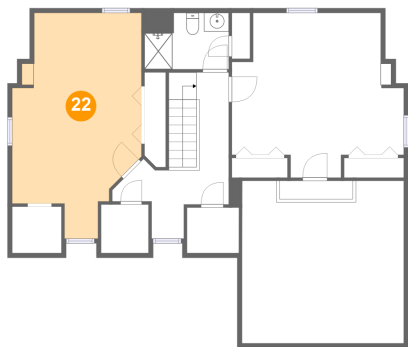
21 Floor 3 - Open To Below



Max Dimensions: 17'3" x 17'4"
Calculated Area: 279 sq. ft
Included: No

Heated: No
Finished: No
Enclosed: No
Contiguous: Yes
Permitted: No
Wet space: No
Addition: No
Conversion: No

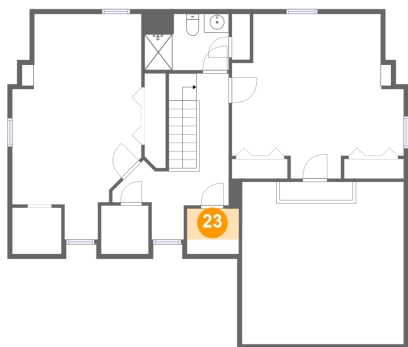
22 Floor 3 - Bedroom



Max Dimensions: 13'9" x 24'1"
Calculated Area: 266 sq. ft
Included: Yes

Heated: Yes
Finished: Yes
Enclosed: Yes
Contiguous: Yes
Permitted: Yes
Wet space: No
Addition: No
Conversion: No

23 Floor 3 - Cl

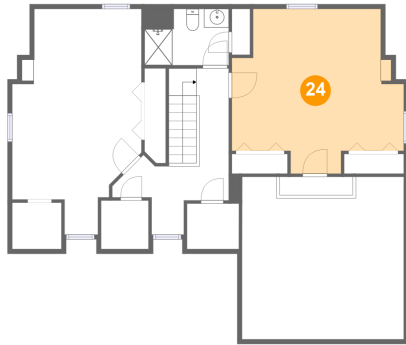


Max Dimensions: 5'6" x 3'4"
Calculated Area: 18 sq. ft
Included: Yes

Heated: Yes
Finished: Yes
Enclosed: Yes
Contiguous: Yes
Permitted: Yes
Wet space: No
Addition: No
Conversion: No

501 Saddlewood Drive, Wirtz, Franklin County, Virginia, United States, 24184

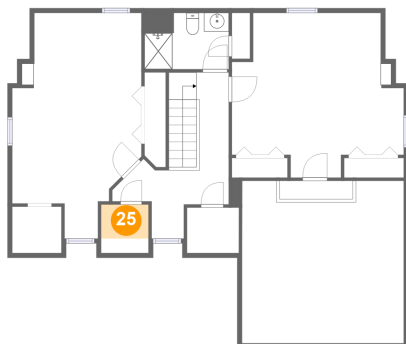
24 Floor 3 - Bedroom



Max Dimensions: 18'4" x 17'7"
Calculated Area: 261 sq. ft
Included: Yes

Heated: Yes
Finished: Yes
Enclosed: Yes
Contiguous: Yes
Permitted: Yes
Wet space: No
Addition: No
Conversion: No

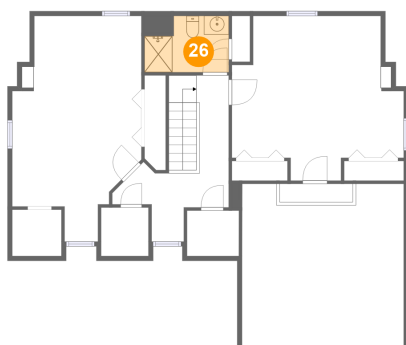
25 Floor 3 - Cl



Max Dimensions: 5'1" x 3'8"
Calculated Area: 18 sq. ft
Included: Yes

Heated: Yes
Finished: Yes
Enclosed: Yes
Contiguous: Yes
Permitted: Yes
Wet space: No
Addition: No
Conversion: No

26 Floor 3 - Bath

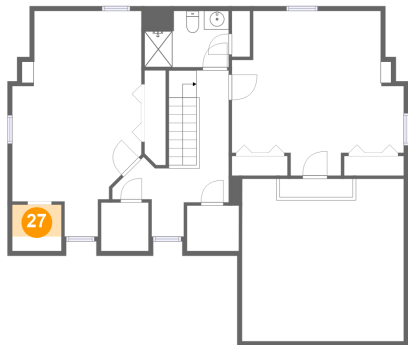


Max Dimensions: 9'0" x 6'0"
Calculated Area: 47 sq. ft
Included: Yes

Heated: Yes
Finished: Yes
Enclosed: Yes
Contiguous: Yes
Permitted: Yes
Wet space: Yes
Addition: No
Conversion: No

501 Saddlewood Drive, Wirtz, Franklin County, Virginia, United States, 24184

27 Floor 3 - Cl



Max Dimensions: 5'3" x 3'5"
Calculated Area: 18 sq. ft
Included: Yes

Heated: Yes
Finished: Yes
Enclosed: Yes
Contiguous: Yes
Permitted: Yes
Wet space: No
Addition: No
Conversion: No