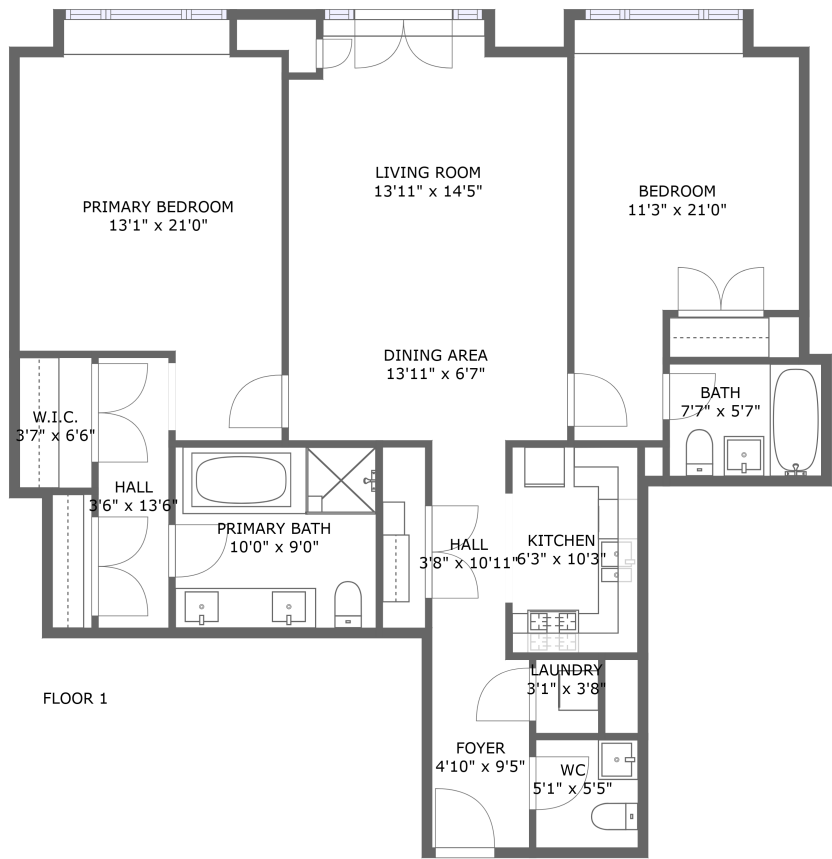
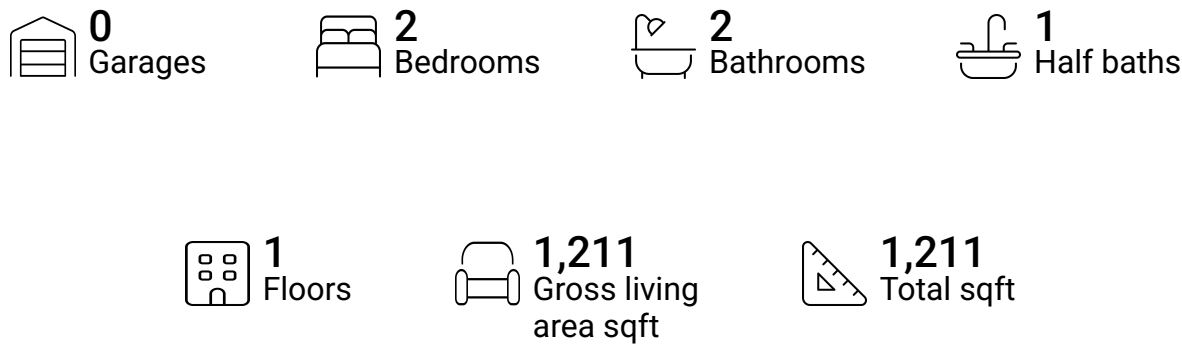
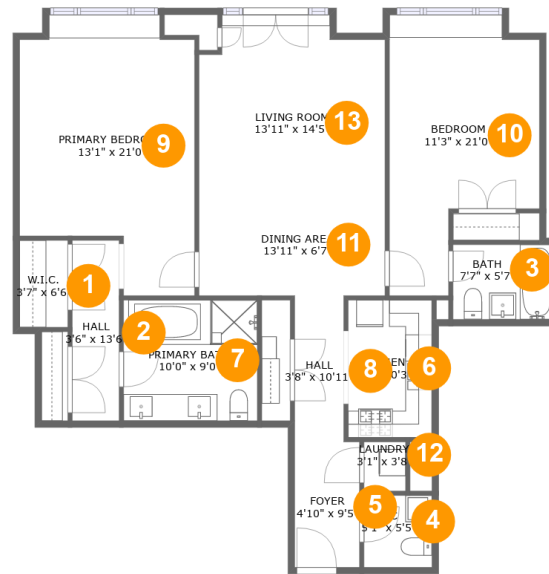


10 City Place, Unit 26C,White Plains,NY,US



Property summary



10 City Place, Unit 26C, White Plains, NY, US**Room dimensions****Floor 1****Total sqft: 1211 Living area: 1211**

#		Dimensions	sqft	Counted as living area
1	W.I.C.	3'7" x 6'6"	23 sq. ft	Yes
2	Hall	3'6" x 13'6"	47 sq. ft	Yes
3	Bath	7'7" x 5'7"	42 sq. ft	Yes
4	WC	5'1" x 5'5"	27 sq. ft	Yes
5	Foyer	4'10" x 9'5"	45 sq. ft	Yes
6	Kitchen	6'3" x 10'3"	64 sq. ft	Yes
7	Primary Bath	10'0" x 9'0"	90 sq. ft	Yes
8	Hall	3'8" x 10'11"	40 sq. ft	Yes
9	Primary Bedroom	13'1" x 21'0"	231 sq. ft	Yes
10	Bedroom	11'3" x 21'0"	186 sq. ft	Yes
11	Dining Area	13'11" x 6'7"	91 sq. ft	Yes

Scan captured on Thu, 23 Jan 2025 21:08:24 GMT

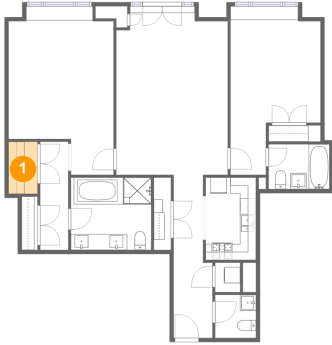
Information is calculated by Cubicasa technology deemed highly reliable but not guaranteed.

10 City Place, Unit 26C,White Plains,NY,US

#		Dimensions	sqft	Counted as living area
12	Laundry	3'1" x 3'8"	11 sq. ft	Yes
13	Living Room	13'11" x 14'5"	188 sq. ft	Yes

10 City Place, Unit 26C, White Plains, NY, US

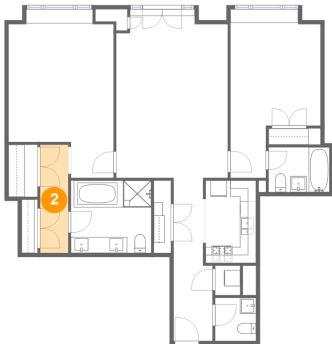
1 Floor 1 - W.I.C.



Dimensions: 3'7" x 6'6"
Area: 23 sq. ft
Counted as living area: Yes

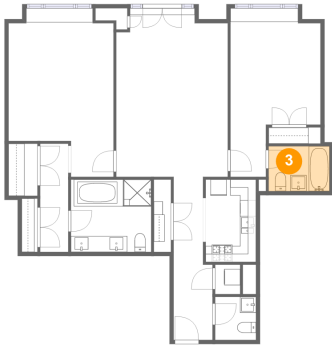
Heated: Yes
Finished: Yes
Enclosed: Yes
Contiguous: Yes
Permitted: Yes
Wet space: No
Addition: No
Conversion: No

2 Floor 1 - Hall



Dimensions: 3'6" x 13'6"
Area: 47 sq. ft
Counted as living area: Yes

Heated: Yes
Finished: Yes
Enclosed: Yes
Contiguous: Yes
Permitted: Yes
Wet space: No
Addition: No
Conversion: No

10 City Place, Unit 26C, White Plains, NY, US**3 Floor 1 - Bath**

Dimensions: 7'7" x 5'7"
Area: 42 sq. ft
Counted as living area: Yes

Heated: Yes
Finished: Yes
Enclosed: Yes
Contiguous: Yes
Permitted: Yes
Wet space: Yes
Addition: No
Conversion: No

4 Floor 1 - WC

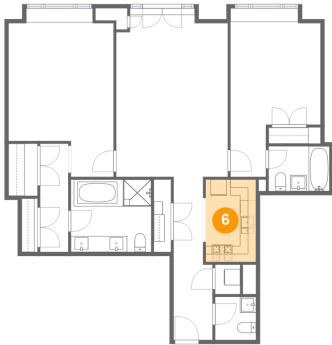
Dimensions: 5'1" x 5'5"
Area: 27 sq. ft
Counted as living area: Yes

Heated: Yes
Finished: Yes
Enclosed: Yes
Contiguous: Yes
Permitted: Yes
Wet space: Yes
Addition: No
Conversion: No

5 Floor 1 - Foyer

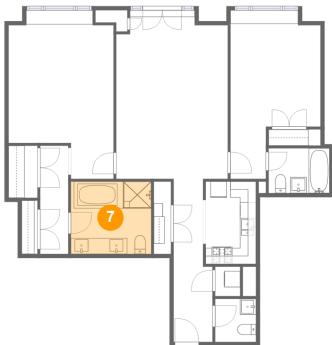
Dimensions: 4'10" x 9'5"
Area: 45 sq. ft
Counted as living area: Yes

Heated: Yes
Finished: Yes
Enclosed: Yes
Contiguous: Yes
Permitted: Yes
Wet space: No
Addition: No
Conversion: No

10 City Place, Unit 26C, White Plains, NY, US**6 Floor 1 - Kitchen**

Dimensions: 6'3" x 10'3"
Area: 64 sq. ft
Counted as living area: Yes

Heated: Yes
Finished: Yes
Enclosed: Yes
Contiguous: Yes
Permitted: Yes
Wet space: No
Addition: No
Conversion: No

7 Floor 1 - Primary Bath

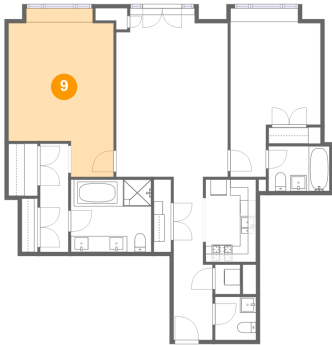
Dimensions: 10'0" x 9'0"
Area: 90 sq. ft
Counted as living area: Yes

Heated: Yes
Finished: Yes
Enclosed: Yes
Contiguous: Yes
Permitted: Yes
Wet space: Yes
Addition: No
Conversion: No

8 Floor 1 - Hall

Dimensions: 3'8" x 10'11"
Area: 40 sq. ft
Counted as living area: Yes

Heated: Yes
Finished: Yes
Enclosed: Yes
Contiguous: Yes
Permitted: Yes
Wet space: No
Addition: No
Conversion: No

10 City Place, Unit 26C, White Plains, NY, US**9 Floor 1 - Primary Bedroom**

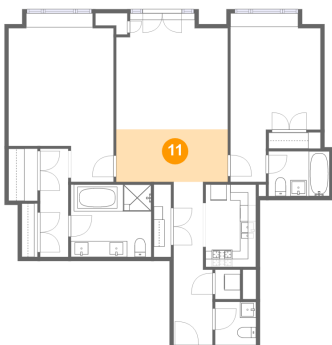
Dimensions: 13'1" x 21'0"
Area: 231 sq. ft
Counted as living area: Yes

Heated: Yes
Finished: Yes
Enclosed: Yes
Contiguous: Yes
Permitted: Yes
Wet space: No
Addition: No
Conversion: No

10 Floor 1 - Bedroom

Dimensions: 11'3" x 21'0"
Area: 186 sq. ft
Counted as living area: Yes

Heated: Yes
Finished: Yes
Enclosed: Yes
Contiguous: Yes
Permitted: Yes
Wet space: No
Addition: No
Conversion: No

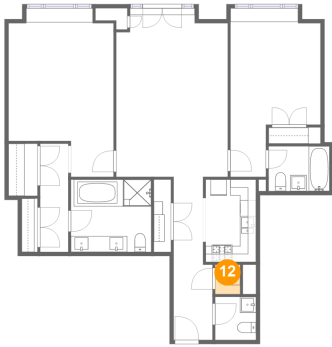
11 Floor 1 - Dining Area

Dimensions: 13'11" x 6'7"
Area: 91 sq. ft
Counted as living area: Yes

Heated: Yes
Finished: Yes
Enclosed: Yes
Contiguous: Yes
Permitted: Yes
Wet space: No
Addition: No
Conversion: No

10 City Place, Unit 26C, White Plains, NY, US

12 Floor 1 - Laundry



Dimensions: 3'1" x 3'8"
Area: 11 sq. ft
Counted as living area: Yes

Heated: Yes
Finished: Yes
Enclosed: Yes
Contiguous: Yes
Permitted: Yes
Wet space: No
Addition: No
Conversion: No

13 Floor 1 - Living Room



Dimensions: 13'11" x 14'5"
Area: 188 sq. ft
Counted as living area: Yes

Heated: Yes
Finished: Yes
Enclosed: Yes
Contiguous: Yes
Permitted: Yes
Wet space: No
Addition: No
Conversion: No