

Home data report

106 Plum Ct,Stephens City,VA,US



Total Area: 2397 sq. ft

Below Ground: 0 sq. ft, Floor 2: 1406 sq. ft, Floor 3: 991 sq. ft

Excluded: Basement 1106 sq. ft, Garage 540 sq. ft, Porch 46 sq. ft, Deck 110 sq. ft, Covered deck 106 sq. ft, Walls: 278 sq. ft

Property summary

 **3** Floors

 **5** Bedrooms

 **3** Bathrooms

Home data report

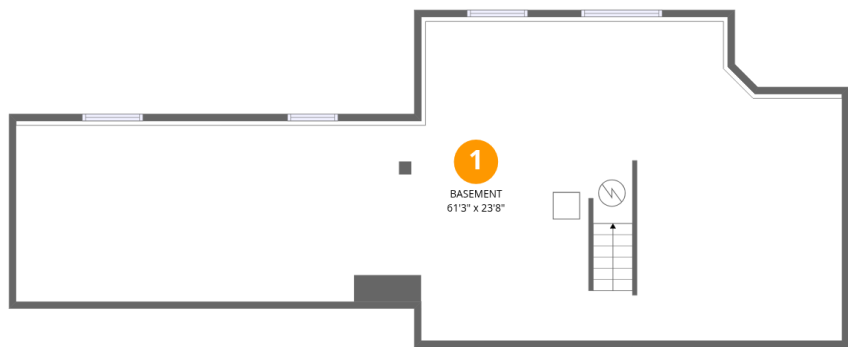
106 Plum Ct,Stephens City,VA,US

 **1**
Half baths

 **1**
Garages

Home data report

106 Plum Ct,Stephens City,VA,US



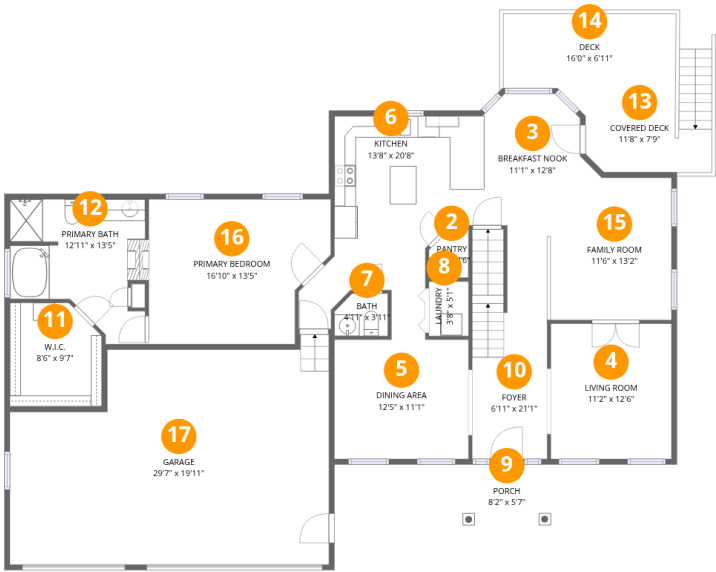
Room dimensions

Floor 1 Below grade Total:0sqft Excluded: 1106sqft

#		Dimensions	sqft	Counted as living area
1	Basement	61'3" x 23'8"	1106 sq. ft	No

Home data report

106 Plum Ct,Stephens City,VA,US



Room dimensions

Floor 2 Total:1406sqft Excluded: 802sqft

#		Dimensions	sqft	Counted as living area
2	Pantry	3'8" x 4'6"	15 sq. ft	Yes
3	Breakfast Nook	11'1" x 12'8"	109 sq. ft	Yes
4	Living Room	11'2" x 12'6"	140 sq. ft	Yes
5	Dining Area	12'5" x 11'1"	137 sq. ft	Yes
6	Kitchen	13'8" x 20'8"	223 sq. ft	Yes
7	Bath	4'11" x 3'11"	18 sq. ft	Yes
8	Laundry	3'8" x 5'1"	19 sq. ft	Yes
9	Porch	8'2" x 5'7"	46 sq. ft	No
10	Foyer	6'11" x 21'1"	145 sq. ft	Yes
11	W.I.C.	8'6" x 9'7"	77 sq. ft	Yes
12	Primary Bath	12'11" x 13'5"	138 sq. ft	Yes

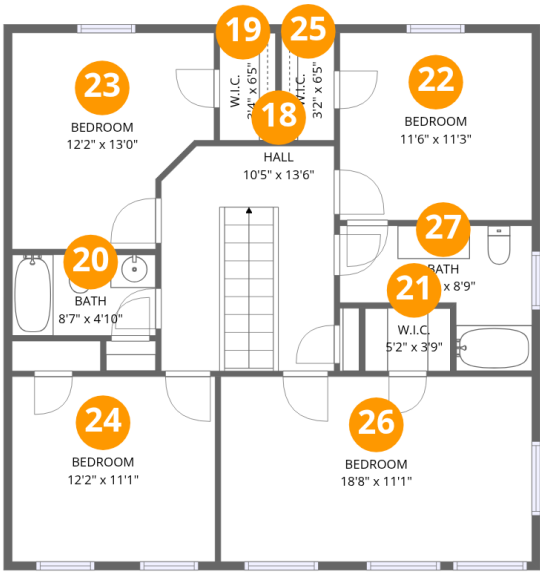
Home data report

106 Plum Ct,Stephens City,VA,US

#		Dimensions	sqft	Counted as living area
13	Covered Deck	11'8" x 7'9"	106 sq. ft	No
14	Deck	16'0" x 6'11"	110 sq. ft	No
15	Family Room	11'6" x 13'2"	139 sq. ft	Yes
16	Primary Bedroom	16'10" x 13'5"	204 sq. ft	Yes
17	Garage	29'7" x 19'11"	540 sq. ft	No

Home data report

106 Plum Ct,Stephens City,VA,US

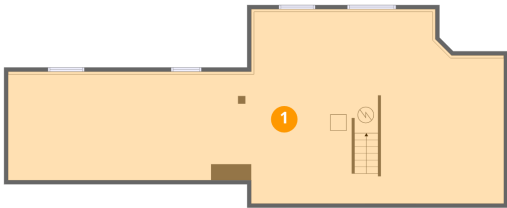


Room dimensions

Floor 3 Total:991sqft Excluded: 0sqft

#		Dimensions	sqft	Counted as living area
18	Hall	10'5" x 13'6"	138 sq. ft	Yes
19	W.I.C.	3'4" x 6'5"	22 sq. ft	Yes
20	Bath	8'7" x 4'10"	42 sq. ft	Yes
21	W.I.C.	5'2" x 3'9"	19 sq. ft	Yes
22	Bedroom	11'6" x 11'3"	130 sq. ft	Yes
23	Bedroom	12'2" x 13'0"	137 sq. ft	Yes
24	Bedroom	12'2" x 11'1"	136 sq. ft	Yes
25	W.I.C.	3'2" x 6'5"	21 sq. ft	Yes
26	Bedroom	18'8" x 11'1"	208 sq. ft	Yes
27	Bath	11'6" x 8'9"	72 sq. ft	Yes

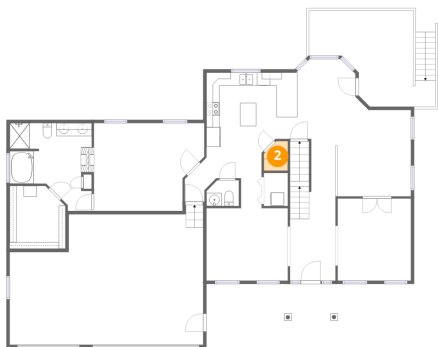
1 Floor 1 - Basement



Dimensions: 61'3" x 23'8"
Area: 1106 sq. ft
Counted as living area: No

Heated: Yes
Finished: No
Enclosed: Yes
Contiguous: Yes
Permitted: Yes
Wet space: No
Addition: No
Conversion: No

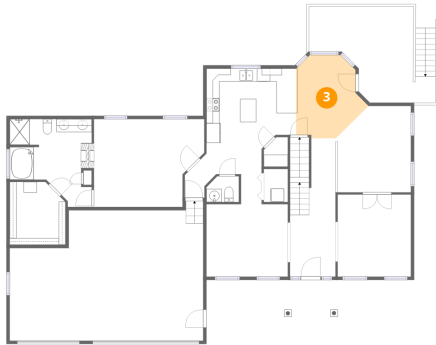
2 Floor 2 - Pantry



Dimensions: 3'8" x 4'6"
Area: 15 sq. ft
Counted as living area: Yes

Heated: Yes
Finished: Yes
Enclosed: Yes
Contiguous: Yes
Permitted: Yes
Wet space: No
Addition: No
Conversion: No

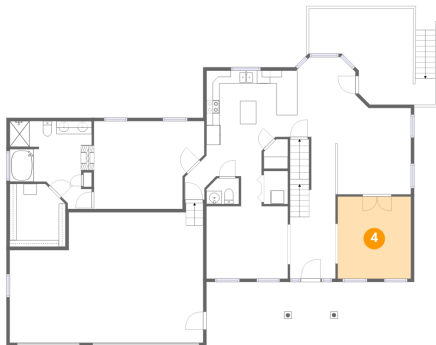
3 Floor 2 - Breakfast Nook



Dimensions: 11'1" x 12'8"
Area: 109 sq. ft
Counted as living area: Yes

Heated: Yes
Finished: Yes
Enclosed: Yes
Contiguous: Yes
Permitted: Yes
Wet space: No
Addition: No
Conversion: No

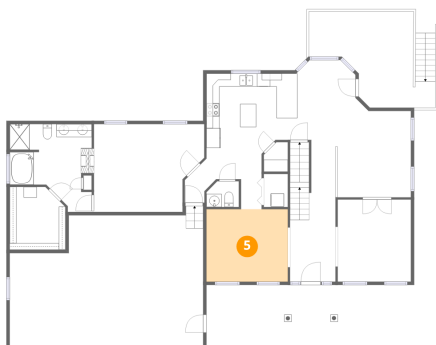
4 Floor 2 - Living Room



Dimensions: 11'2" x 12'6"
Area: 140 sq. ft
Counted as living area: Yes

Heated: Yes
Finished: Yes
Enclosed: Yes
Contiguous: Yes
Permitted: Yes
Wet space: No
Addition: No
Conversion: No

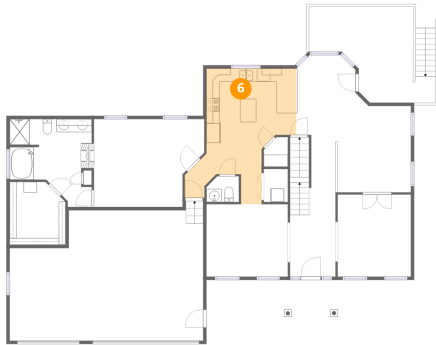
5 Floor 2 - Dining Area



Dimensions: 12'5" x 11'1"
Area: 137 sq. ft
Counted as living area: Yes

Heated: Yes
Finished: Yes
Enclosed: Yes
Contiguous: Yes
Permitted: Yes
Wet space: No
Addition: No
Conversion: No

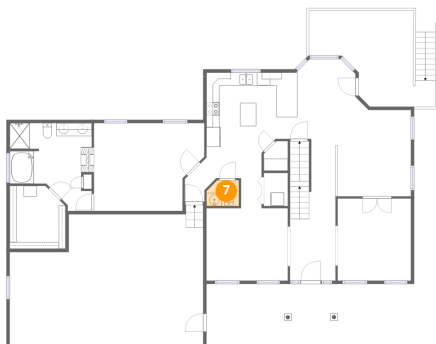
6 Floor 2 - Kitchen



Dimensions: 13'8" x 20'8"
Area: 223 sq. ft
Counted as living area: Yes

Heated: Yes
Finished: Yes
Enclosed: Yes
Contiguous: Yes
Permitted: Yes
Wet space: No
Addition: No
Conversion: No

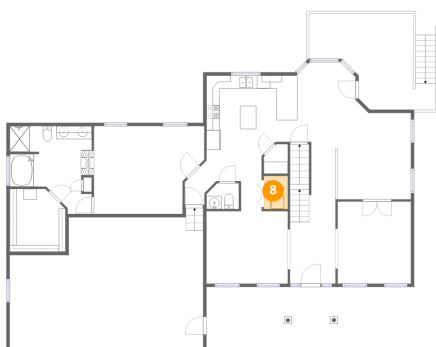
7 Floor 2 - Bath



Dimensions: 4'11" x 3'11"
Area: 18 sq. ft
Counted as living area: Yes

Heated: Yes
Finished: Yes
Enclosed: Yes
Contiguous: Yes
Permitted: Yes
Wet space: Yes
Addition: No
Conversion: No

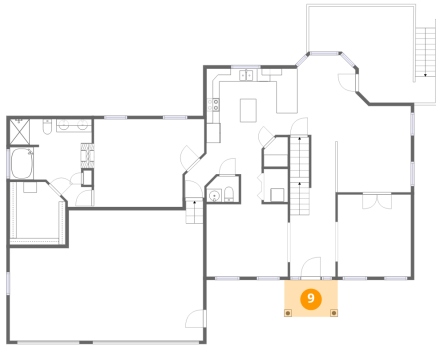
8 Floor 2 - Laundry



Dimensions: 3'8" x 5'1"
Area: 19 sq. ft
Counted as living area: Yes

Heated: Yes
Finished: Yes
Enclosed: Yes
Contiguous: Yes
Permitted: Yes
Wet space: No
Addition: No
Conversion: No

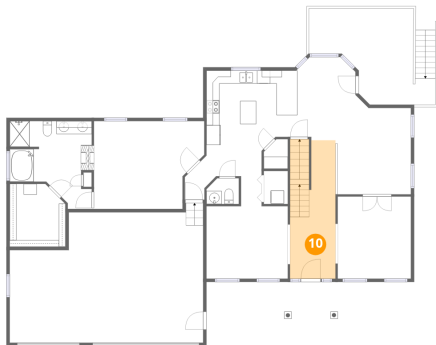
9 Floor 2 - Porch



Dimensions: 8'2" x 5'7"
Area: 46 sq. ft
Counted as living area: No

Heated: No
Finished: No
Enclosed: No
Contiguous: Yes
Permitted: Yes
Wet space: No
Addition: No
Conversion: No

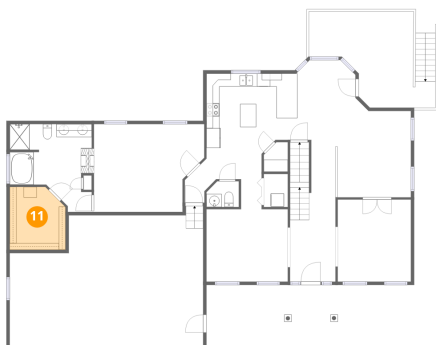
10 Floor 2 - Foyer



Dimensions: 6'11" x 21'1"
Area: 145 sq. ft
Counted as living area: Yes

Heated: Yes
Finished: Yes
Enclosed: Yes
Contiguous: Yes
Permitted: Yes
Wet space: No
Addition: No
Conversion: No

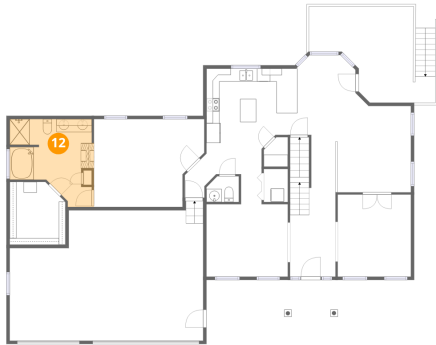
11 Floor 2 - W.I.C.



Dimensions: 8'6" x 9'7"
Area: 77 sq. ft
Counted as living area: Yes

Heated: Yes
Finished: Yes
Enclosed: Yes
Contiguous: Yes
Permitted: Yes
Wet space: No
Addition: No
Conversion: No

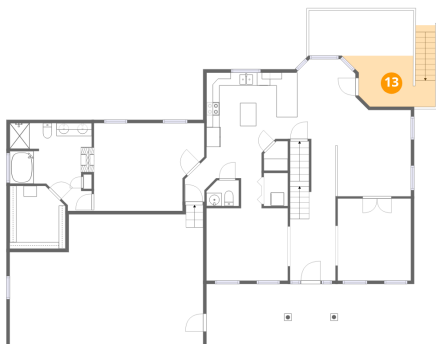
12 Floor 2 - Primary Bath



Dimensions: 12'11" x 13'5"
Area: 138 sq. ft
Counted as living area: Yes

Heated: Yes
Finished: Yes
Enclosed: Yes
Contiguous: Yes
Permitted: Yes
Wet space: Yes
Addition: No
Conversion: No

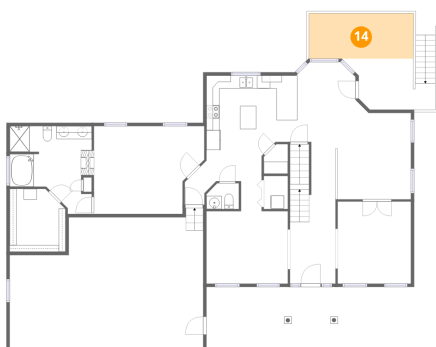
13 Floor 2 - Covered Deck



Dimensions: 11'8" x 7'9"
Area: 106 sq. ft
Counted as living area: No

Heated: No
Finished: No
Enclosed: No
Contiguous: Yes
Permitted: Yes
Wet space: No
Addition: No
Conversion: No

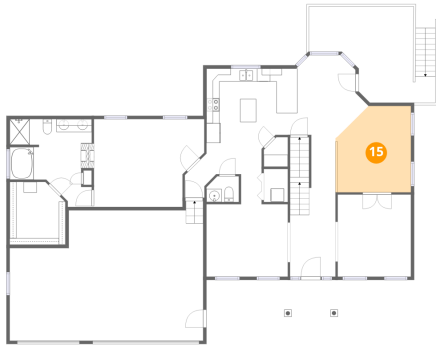
14 Floor 2 - Deck



Dimensions: 16'0" x 6'11"
Area: 110 sq. ft
Counted as living area: No

Heated: No
Finished: No
Enclosed: No
Contiguous: Yes
Permitted: Yes
Wet space: No
Addition: No
Conversion: No

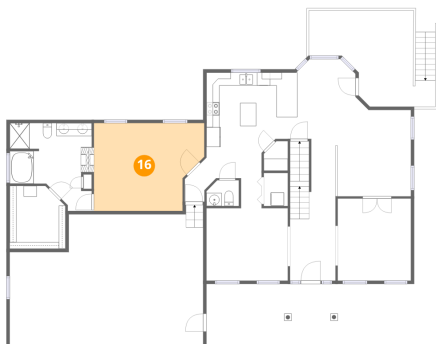
15 Floor 2 - Family Room



Dimensions: 11'6" x 13'2"
Area: 139 sq. ft
Counted as living area: Yes

Heated: Yes
Finished: Yes
Enclosed: Yes
Contiguous: Yes
Permitted: Yes
Wet space: No
Addition: No
Conversion: No

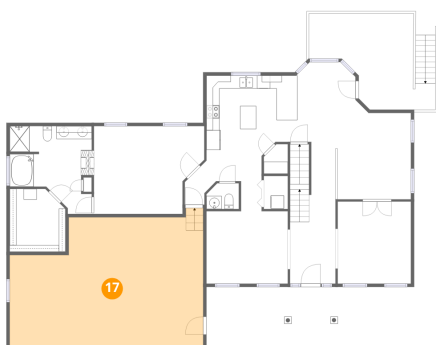
16 Floor 2 - Primary Bedroom



Dimensions: 16'10" x 13'5"
Area: 204 sq. ft
Counted as living area: Yes

Heated: Yes
Finished: Yes
Enclosed: Yes
Contiguous: Yes
Permitted: Yes
Wet space: No
Addition: No
Conversion: No

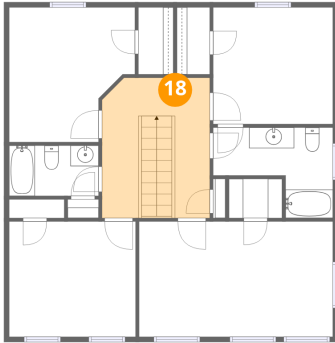
17 Floor 2 - Garage



Dimensions: 29'7" x 19'11"
Area: 540 sq. ft
Counted as living area: No

Heated: No
Finished: No
Enclosed: Yes
Contiguous: Yes
Permitted: Yes
Wet space: No
Addition: No
Conversion: No

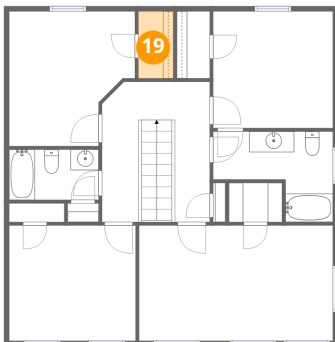
18 Floor 3 - Hall



Dimensions: 10'5" x 13'6"
Area: 138 sq. ft
Counted as living area: Yes

Heated: Yes
Finished: Yes
Enclosed: Yes
Contiguous: Yes
Permitted: Yes
Wet space: No
Addition: No
Conversion: No

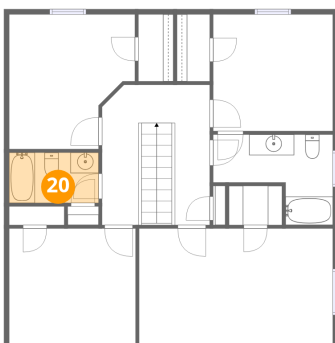
19 Floor 3 - W.I.C.



Dimensions: 3'4" x 6'5"
Area: 22 sq. ft
Counted as living area: Yes

Heated: Yes
Finished: Yes
Enclosed: Yes
Contiguous: Yes
Permitted: Yes
Wet space: No
Addition: No
Conversion: No

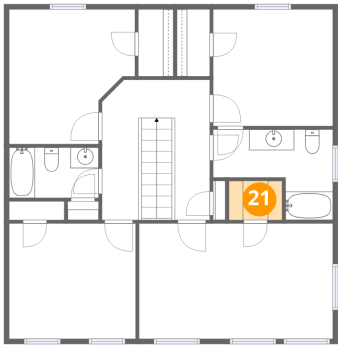
20 Floor 3 - Bath



Dimensions: 8'7" x 4'10"
Area: 42 sq. ft
Counted as living area: Yes

Heated: Yes
Finished: Yes
Enclosed: Yes
Contiguous: Yes
Permitted: Yes
Wet space: Yes
Addition: No
Conversion: No

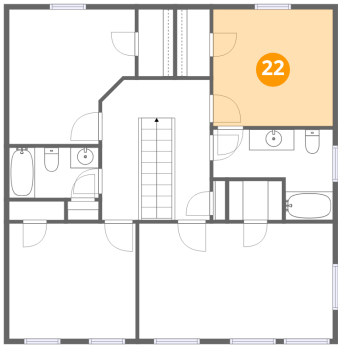
21 Floor 3 - W.I.C.



Dimensions: 5'2" x 3'9"
Area: 19 sq. ft
Counted as living area: Yes

Heated: Yes
Finished: Yes
Enclosed: Yes
Contiguous: Yes
Permitted: Yes
Wet space: No
Addition: No
Conversion: No

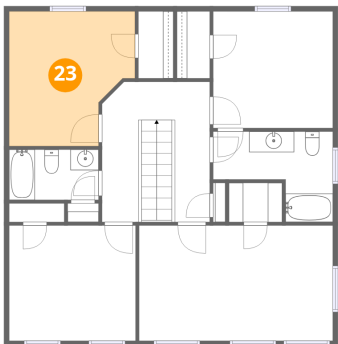
22 Floor 3 - Bedroom



Dimensions: 11'6" x 11'3"
Area: 130 sq. ft
Counted as living area: Yes

Heated: Yes
Finished: Yes
Enclosed: Yes
Contiguous: Yes
Permitted: Yes
Wet space: No
Addition: No
Conversion: No

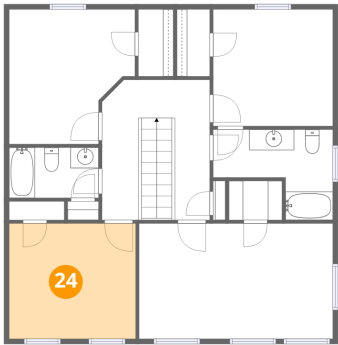
23 Floor 3 - Bedroom



Dimensions: 12'2" x 13'0"
Area: 137 sq. ft
Counted as living area: Yes

Heated: Yes
Finished: Yes
Enclosed: Yes
Contiguous: Yes
Permitted: Yes
Wet space: No
Addition: No
Conversion: No

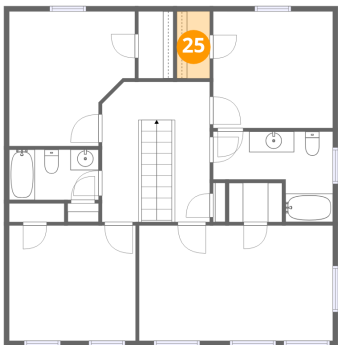
24 Floor 3 - Bedroom



Dimensions: 12'2" x 11'1"
Area: 136 sq. ft
Counted as living area: Yes

Heated: Yes
Finished: Yes
Enclosed: Yes
Contiguous: Yes
Permitted: Yes
Wet space: No
Addition: No
Conversion: No

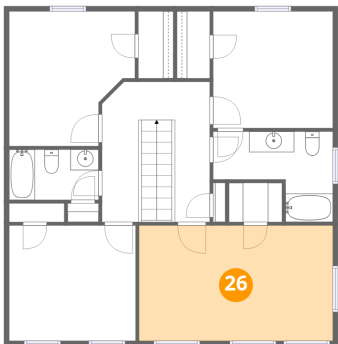
25 Floor 3 - W.I.C.



Dimensions: 3'2" x 6'5"
Area: 21 sq. ft
Counted as living area: Yes

Heated: Yes
Finished: Yes
Enclosed: Yes
Contiguous: Yes
Permitted: Yes
Wet space: No
Addition: No
Conversion: No

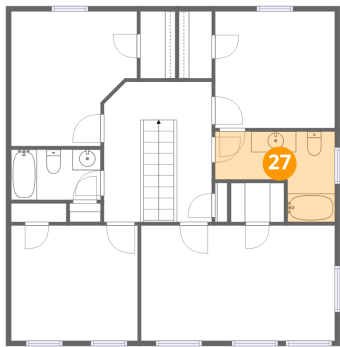
26 Floor 3 - Bedroom



Dimensions: 18'8" x 11'1"
Area: 208 sq. ft
Counted as living area: Yes

Heated: Yes
Finished: Yes
Enclosed: Yes
Contiguous: Yes
Permitted: Yes
Wet space: No
Addition: No
Conversion: No

27 Floor 3 - Bath



Dimensions: 11'6" x 8'9"
Area: 72 sq. ft
Counted as living area: Yes

Heated: Yes
Finished: Yes
Enclosed: Yes
Contiguous: Yes
Permitted: Yes
Wet space: Yes
Addition: No
Conversion: No