


105 Indian Crest Drive, Madison, Madison County, Alabama, United States, 35758



Property summary


 **1** Garages

 **4** Bedrooms

 **4** Bathrooms

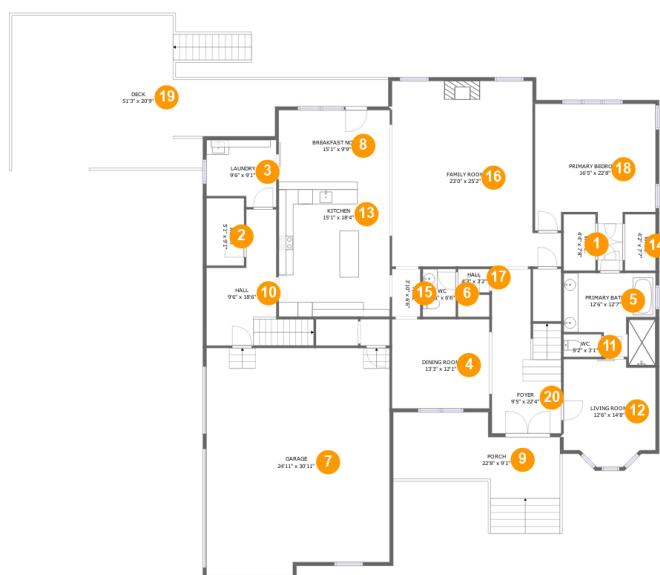
 **1** Half baths

 **2** Floors

 **4,318** Gross living area sqft

 **6,559** Total sqft

105 Indian Crest Drive, Madison, Madison County, Alabama, United States, 35758



Room dimensions

Floor 1

Total sqft: 4201

Living area: 2497

#		Dimensions	sqft	Counted as living area
1	Cl	4'4" x 7'8"	33 sq. ft	Yes
2	Room	5'1" x 9'1"	47 sq. ft	Yes
3	Utility	9'6" x 9'1"	79 sq. ft	Yes
4	Dining Room	13'3" x 12'1"	161 sq. ft	Yes
5	Bath	12'6" x 12'7"	127 sq. ft	Yes
6	Bath	4'6" x 6'6"	29 sq. ft	Yes
7	Garage	24'11" x 30'11"	746 sq. ft	No
8	Nook	15'1" x 9'9"	147 sq. ft	Yes
9	Outdoor	22'8" x 9'1"	243 sq. ft	No
10	Hall	9'6" x 18'6"	151 sq. ft	Yes
11	Bath	5'2" x 3'1"	16 sq. ft	Yes

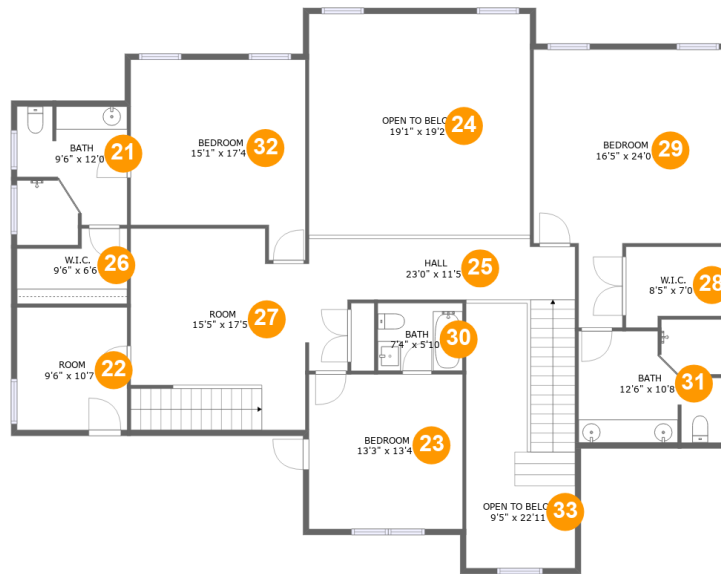
Scan captured on Tue, 03 Dec 2024 21:04:07 GMT

Information is calculated by Cubicasa technology deemed highly reliable but not guaranteed.

**105 Indian Crest Drive, Madison, Madison County,
Alabama, United States, 35758**

#		Dimensions	sqft	Counted as living area
12	Living Room	12'6" x 14'8"	164 sq. ft	Yes
13	Kitchen	15'1" x 18'4"	277 sq. ft	Yes
14	Cl	4'2" x 7'7"	32 sq. ft	Yes
15	Hall	3'10" x 6'6"	25 sq. ft	Yes
16	Living Room	23'0" x 25'2"	500 sq. ft	Yes
17	Hall	4'3" x 3'2"	14 sq. ft	Yes
18	Bedroom	16'5" x 22'8"	277 sq. ft	Yes
19	Outdoor	51'3" x 20'9"	636 sq. ft	No
20	Entry	9'5" x 22'4"	179 sq. ft	Yes

105 Indian Crest Drive, Madison, Madison County, Alabama, United States, 35758



Room dimensions

Floor 2

Total sqft: 2358 Living area: 1821

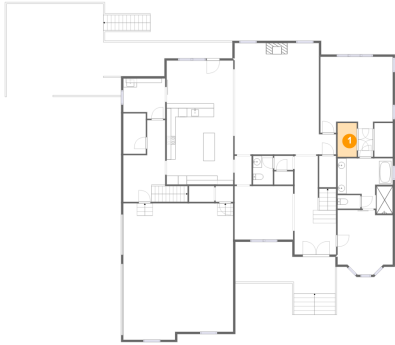
#		Dimensions	sqft	Counted as living area
21	Bath	9'6" x 12'0"	104 sq. ft	Yes
22	Room	9'6" x 10'7"	101 sq. ft	Yes
23	Bedroom	13'3" x 13'4"	178 sq. ft	Yes
24	Open To Below	19'1" x 19'2"	366 sq. ft	No
25	Hall	23'0" x 11'5"	216 sq. ft	Yes
26	Cl	9'6" x 6'6"	52 sq. ft	Yes
27	Room	15'5" x 17'5"	253 sq. ft	Yes
28	Cl	8'5" x 7'0"	53 sq. ft	Yes
29	Bedroom	16'5" x 24'0"	303 sq. ft	Yes
30	Bath	7'4" x 5'10"	43 sq. ft	Yes
31	Bath	12'6" x 10'8"	123 sq. ft	Yes

105 Indian Crest Drive, Madison, Madison County, Alabama, United States, 35758

#		Dimensions	sqft	Counted as living area
32	Bedroom	15'1" x 17'4"	225 sq. ft	Yes
33	Open To Below	9'5" x 22'11"	147 sq. ft	No

105 Indian Crest Drive, Madison, Madison County, Alabama, United States, 35758

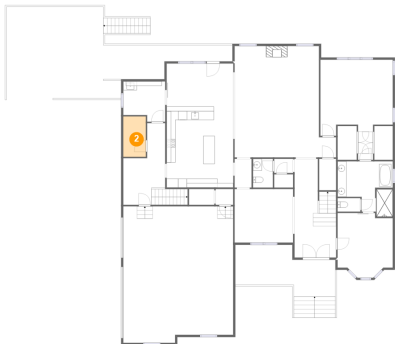
1 Floor 1 - Cl



Dimensions: 4'4" x 7'8"
Area: 33 sq. ft
Counted as living area: Yes

Heated: Yes
Finished: Yes
Enclosed: Yes
Contiguous: Yes
Permitted: Yes
Wet space: No
Addition: No
Conversion: No

2 Floor 1 - Room



Dimensions: 5'1" x 9'1"
Area: 47 sq. ft
Counted as living area: Yes

Heated: Yes
Finished: Yes
Enclosed: Yes
Contiguous: Yes
Permitted: Yes
Wet space: No
Addition: No
Conversion: No

**105 Indian Crest Drive, Madison, Madison County,
Alabama, United States, 35758**

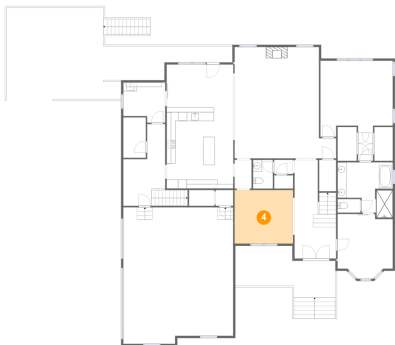
3 Floor 1 - Utility



Dimensions: 9'6" x 9'1"
Area: 79 sq. ft
Counted as living area: Yes

Heated: Yes
Finished: Yes
Enclosed: Yes
Contiguous: Yes
Permitted: Yes
Wet space: No
Addition: No
Conversion: No

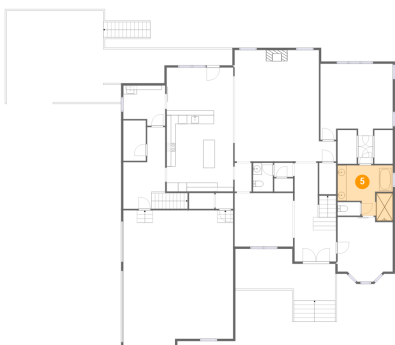
4 Floor 1 - Dining Room



Dimensions: 13'3" x 12'1"
Area: 161 sq. ft
Counted as living area: Yes

Heated: Yes
Finished: Yes
Enclosed: Yes
Contiguous: Yes
Permitted: Yes
Wet space: No
Addition: No
Conversion: No

5 Floor 1 - Bath



Dimensions: 12'6" x 12'7"
Area: 127 sq. ft
Counted as living area: Yes

Heated: Yes
Finished: Yes
Enclosed: Yes
Contiguous: Yes
Permitted: Yes
Wet space: Yes
Addition: No
Conversion: No

105 Indian Crest Drive, Madison, Madison County, Alabama, United States, 35758

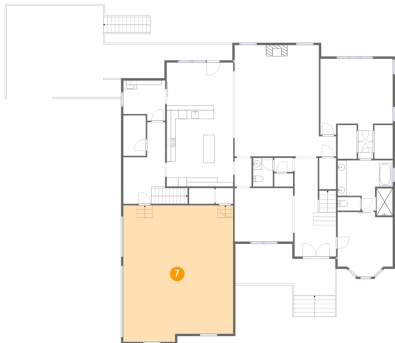
6 Floor 1 - Bath



Dimensions: 4'6" x 6'6"
Area: 29 sq. ft
Counted as living area: Yes

Heated: Yes
Finished: Yes
Enclosed: Yes
Contiguous: Yes
Permitted: Yes
Wet space: No
Addition: No
Conversion: No

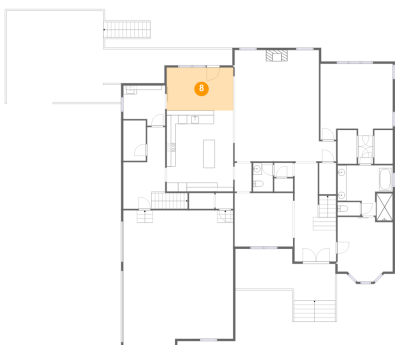
7 Floor 1 - Garage



Dimensions: 24'11" x 30'11"
Area: 746 sq. ft
Counted as living area: No

Heated: No
Finished: No
Enclosed: Yes
Contiguous: Yes
Permitted: Yes
Wet space: No
Addition: No
Conversion: No

8 Floor 1 - Nook

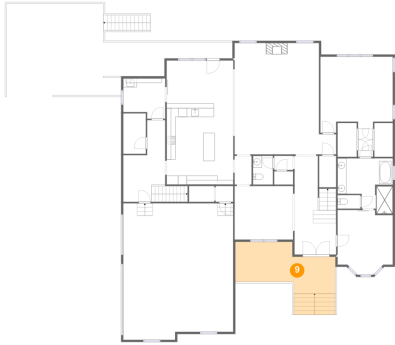


Dimensions: 15'1" x 9'9"
Area: 147 sq. ft
Counted as living area: Yes

Heated: Yes
Finished: Yes
Enclosed: Yes
Contiguous: Yes
Permitted: Yes
Wet space: No
Addition: No
Conversion: No

105 Indian Crest Drive, Madison, Madison County, Alabama, United States, 35758

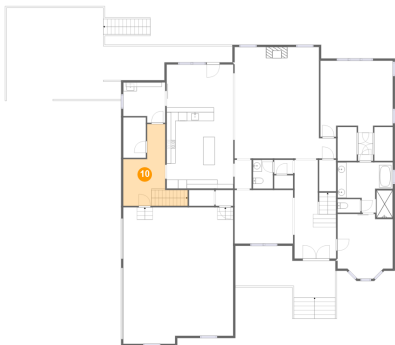
9 Floor 1 - Outdoor



Dimensions: 22'8" x 9'1"
Area: 243 sq. ft
Counted as living area: No

Heated: No
Finished: Yes
Enclosed: No
Contiguous: Yes
Permitted: Yes
Wet space: No
Addition: No
Conversion: No

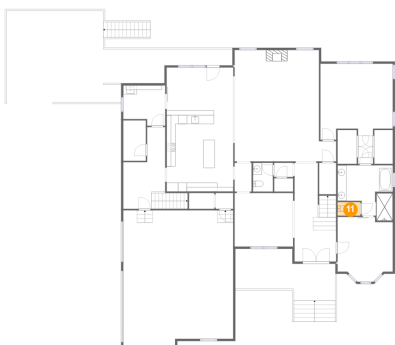
10 Floor 1 - Hall



Dimensions: 9'6" x 18'6"
Area: 151 sq. ft
Counted as living area: Yes

Heated: Yes
Finished: Yes
Enclosed: Yes
Contiguous: Yes
Permitted: Yes
Wet space: No
Addition: No
Conversion: No

11 Floor 1 - Bath

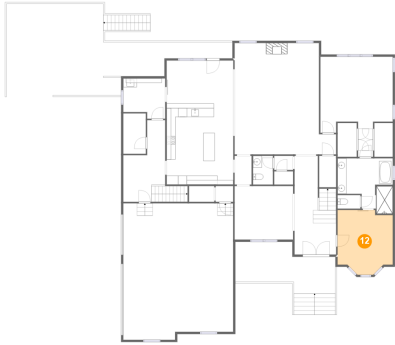


Dimensions: 5'2" x 3'1"
Area: 16 sq. ft
Counted as living area: Yes

Heated: Yes
Finished: Yes
Enclosed: Yes
Contiguous: Yes
Permitted: Yes
Wet space: No
Addition: No
Conversion: No

**105 Indian Crest Drive, Madison, Madison County,
Alabama, United States, 35758**

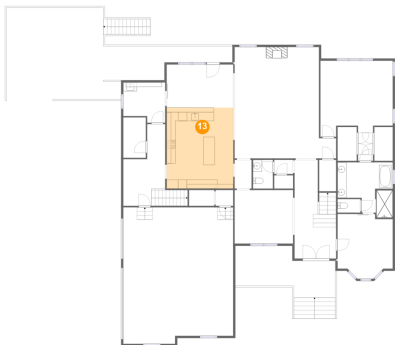
12 Floor 1 - Living Room



Dimensions: 12'6" x 14'8"
Area: 164 sq. ft
Counted as living area: Yes

Heated: Yes
Finished: Yes
Enclosed: Yes
Contiguous: Yes
Permitted: Yes
Wet space: No
Addition: No
Conversion: No

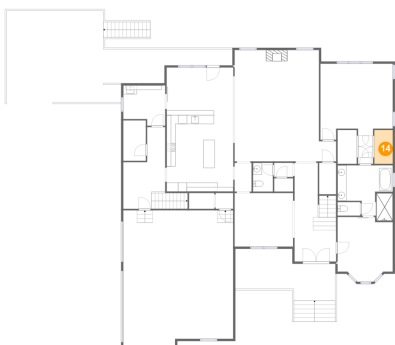
13 Floor 1 - Kitchen



Dimensions: 15'1" x 18'4"
Area: 277 sq. ft
Counted as living area: Yes

Heated: Yes
Finished: Yes
Enclosed: Yes
Contiguous: Yes
Permitted: Yes
Wet space: No
Addition: No
Conversion: No

14 Floor 1 - Cl

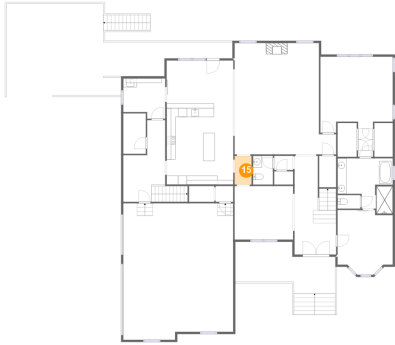


Dimensions: 4'2" x 7'7"
Area: 32 sq. ft
Counted as living area: Yes

Heated: Yes
Finished: Yes
Enclosed: Yes
Contiguous: Yes
Permitted: Yes
Wet space: No
Addition: No
Conversion: No

105 Indian Crest Drive, Madison, Madison County, Alabama, United States, 35758

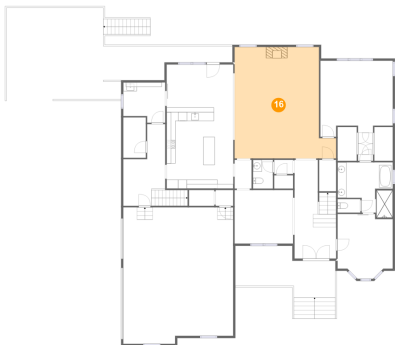
15 Floor 1 - Hall



Dimensions: 3'10" x 6'6"
Area: 25 sq. ft
Counted as living area: Yes

Heated: Yes
Finished: Yes
Enclosed: Yes
Contiguous: Yes
Permitted: Yes
Wet space: No
Addition: No
Conversion: No

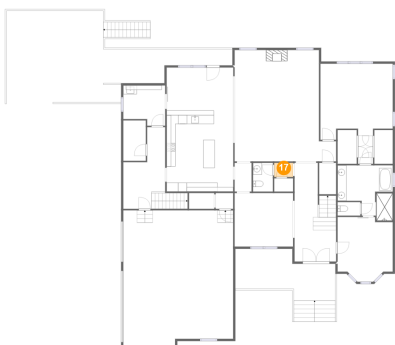
16 Floor 1 - Living Room



Dimensions: 23'0" x 25'2"
Area: 500 sq. ft
Counted as living area: Yes

Heated: Yes
Finished: Yes
Enclosed: Yes
Contiguous: Yes
Permitted: Yes
Wet space: No
Addition: No
Conversion: No

17 Floor 1 - Hall



Dimensions: 4'3" x 3'2"
Area: 14 sq. ft
Counted as living area: Yes

Heated: Yes
Finished: Yes
Enclosed: Yes
Contiguous: Yes
Permitted: Yes
Wet space: No
Addition: No
Conversion: No

**105 Indian Crest Drive, Madison, Madison County,
Alabama, United States, 35758**

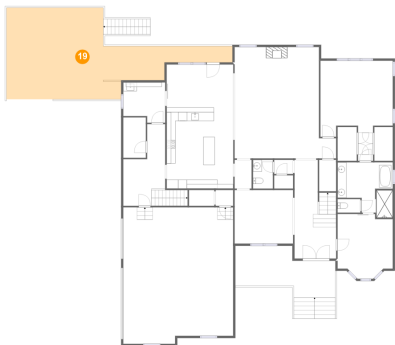
18 Floor 1 - Bedroom



Dimensions: 16'5" x 22'8"
Area: 277 sq. ft
Counted as living area: Yes

Heated: Yes
Finished: Yes
Enclosed: Yes
Contiguous: Yes
Permitted: Yes
Wet space: No
Addition: No
Conversion: No

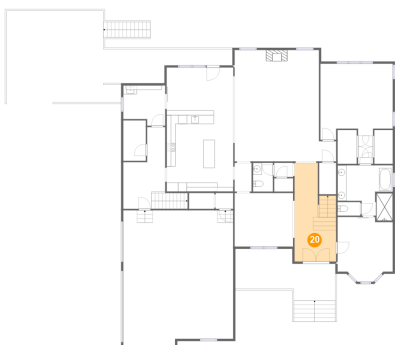
19 Floor 1 - Outdoor



Dimensions: 51'3" x 20'9"
Area: 636 sq. ft
Counted as living area: No

Heated: No
Finished: Yes
Enclosed: No
Contiguous: Yes
Permitted: Yes
Wet space: No
Addition: No
Conversion: No

20 Floor 1 - Entry



Dimensions: 9'5" x 22'4"
Area: 179 sq. ft
Counted as living area: Yes

Heated: Yes
Finished: Yes
Enclosed: Yes
Contiguous: Yes
Permitted: Yes
Wet space: No
Addition: No
Conversion: No

**105 Indian Crest Drive, Madison, Madison County,
Alabama, United States, 35758**

21 Floor 2 - Bath



Dimensions: 9'6" x 12'0"
Area: 104 sq. ft
Counted as living area: Yes

Heated: Yes
Finished: Yes
Enclosed: Yes
Contiguous: Yes
Permitted: Yes
Wet space: Yes
Addition: No
Conversion: No

22 Floor 2 - Room



Dimensions: 9'6" x 10'7"
Area: 101 sq. ft
Counted as living area: Yes

Heated: Yes
Finished: Yes
Enclosed: Yes
Contiguous: Yes
Permitted: Yes
Wet space: No
Addition: No
Conversion: No

23 Floor 2 - Bedroom



Dimensions: 13'3" x 13'4"
Area: 178 sq. ft
Counted as living area: Yes

Heated: Yes
Finished: Yes
Enclosed: Yes
Contiguous: Yes
Permitted: Yes
Wet space: No
Addition: No
Conversion: No

**105 Indian Crest Drive, Madison, Madison County,
Alabama, United States, 35758**

24 Floor 2 - Open To Below



Dimensions: 19'1" x 19'2"
Area: 366 sq. ft
Counted as living area: No

Heated: No
Finished: No
Enclosed: No
Contiguous: Yes
Permitted: No
Wet space: No
Addition: No
Conversion: No

25 Floor 2 - Hall



Dimensions: 23'0" x 11'5"
Area: 216 sq. ft
Counted as living area: Yes

Heated: Yes
Finished: Yes
Enclosed: Yes
Contiguous: Yes
Permitted: Yes
Wet space: No
Addition: No
Conversion: No

26 Floor 2 - Cl



Dimensions: 9'6" x 6'6"
Area: 52 sq. ft
Counted as living area: Yes

Heated: Yes
Finished: Yes
Enclosed: Yes
Contiguous: Yes
Permitted: Yes
Wet space: No
Addition: No
Conversion: No

**105 Indian Crest Drive, Madison, Madison County,
Alabama, United States, 35758**

27 Floor 2 - Room



Dimensions: 15'5" x 17'5"
Area: 253 sq. ft
Counted as living area: Yes

Heated: Yes
Finished: Yes
Enclosed: Yes
Contiguous: Yes
Permitted: Yes
Wet space: No
Addition: No
Conversion: No

28 Floor 2 - Cl



Dimensions: 8'5" x 7'0"
Area: 53 sq. ft
Counted as living area: Yes

Heated: Yes
Finished: Yes
Enclosed: Yes
Contiguous: Yes
Permitted: Yes
Wet space: No
Addition: No
Conversion: No

29 Floor 2 - Bedroom



Dimensions: 16'5" x 24'0"
Area: 303 sq. ft
Counted as living area: Yes

Heated: Yes
Finished: Yes
Enclosed: Yes
Contiguous: Yes
Permitted: Yes
Wet space: No
Addition: No
Conversion: No

**105 Indian Crest Drive, Madison, Madison County,
Alabama, United States, 35758**

30 Floor 2 - Bath



Dimensions: 7'4" x 5'10"
Area: 43 sq. ft
Counted as living area: Yes

Heated: Yes
Finished: Yes
Enclosed: Yes
Contiguous: Yes
Permitted: Yes
Wet space: Yes
Addition: No
Conversion: No

31 Floor 2 - Bath



Dimensions: 12'6" x 10'8"
Area: 123 sq. ft
Counted as living area: Yes

Heated: Yes
Finished: Yes
Enclosed: Yes
Contiguous: Yes
Permitted: Yes
Wet space: Yes
Addition: No
Conversion: No

32 Floor 2 - Bedroom

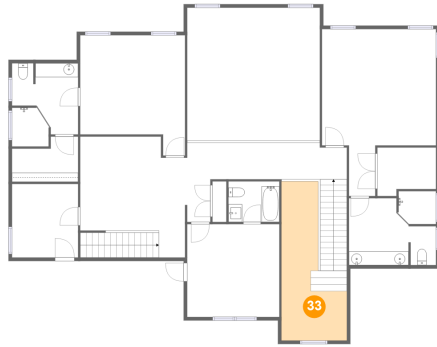


Dimensions: 15'1" x 17'4"
Area: 225 sq. ft
Counted as living area: Yes

Heated: Yes
Finished: Yes
Enclosed: Yes
Contiguous: Yes
Permitted: Yes
Wet space: No
Addition: No
Conversion: No

**105 Indian Crest Drive, Madison, Madison County,
Alabama, United States, 35758**

33 Floor 2 - Open To Below



Dimensions: 9'5" x 22'11"
Area: 147 sq. ft
Counted as living area: No

Heated: No
Finished: No
Enclosed: No
Contiguous: Yes
Permitted: No
Wet space: No
Addition: No
Conversion: No