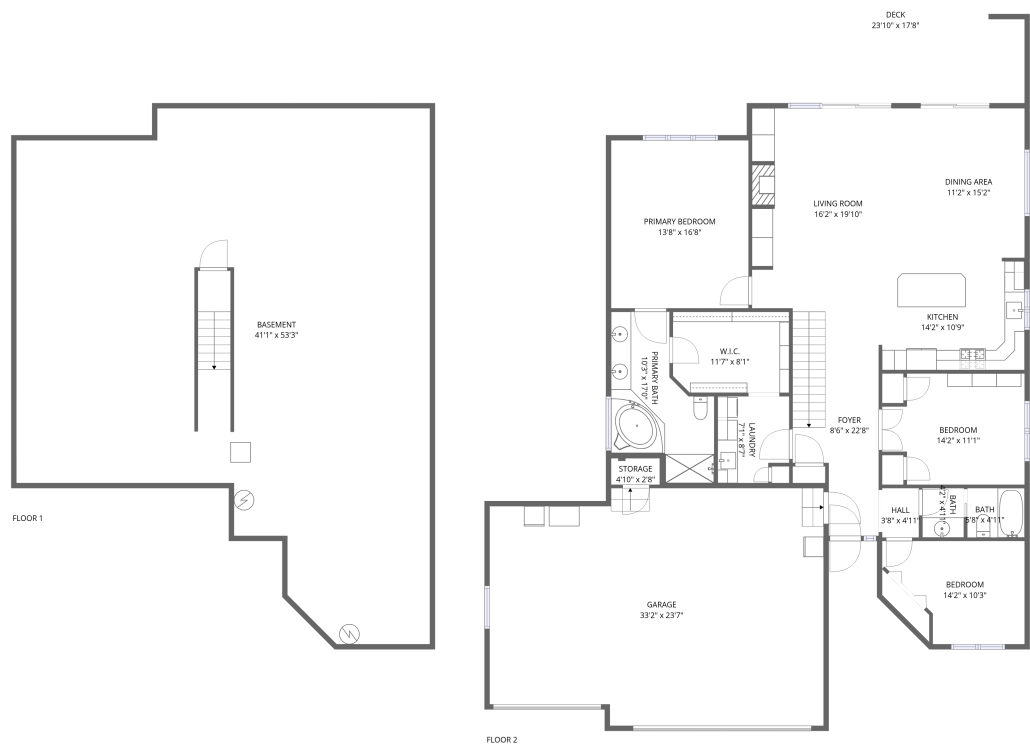


Home data report

3410 Bridgetown Rd,Bristol,IN,US



**Total Area: 1711 sq. ft**

Below Ground: 0 sq. ft, Floor 2: 1711 sq. ft

Excluded: Basement 1727 sq. ft, Garage 736 sq. ft, Storage 13 sq. ft, Deck 390 sq. ft, Walls: 241 sq. ft

Property summary

 **2** Floors

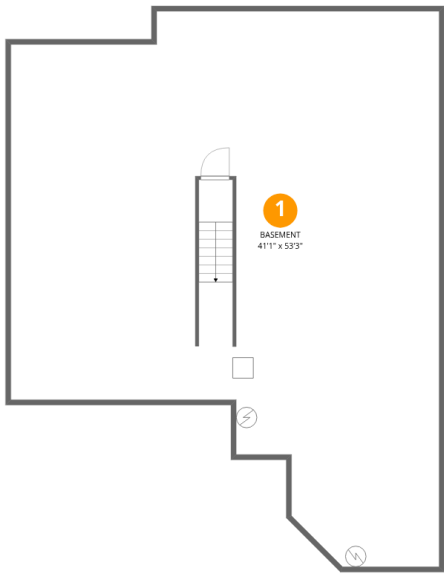
 **3** Bedrooms

 **2** Bathrooms

 **1** Garages

Home data report

3410 Bridgetown Rd,Bristol,IN,US



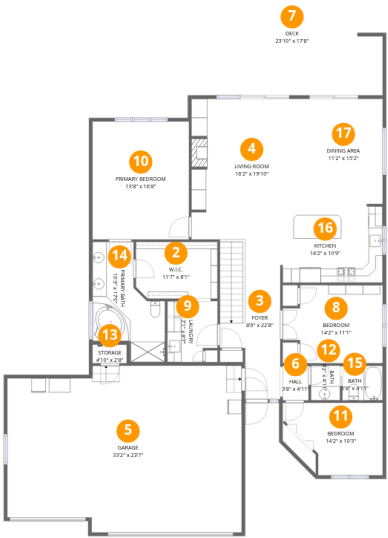
Room dimensions

Floor 1 Below grade Total:0sqft   Excluded: 1727sqft

#		Dimensions	sqft	Counted as living area
1	Basement	41'1" x 53'3"	1727 sq. ft	No

Home data report

3410 Bridgetown Rd,Bristol,IN,US



Room dimensions

Floor 2 Total:1711sqft Excluded: 1139sqft

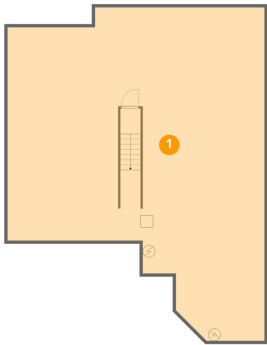
#		Dimensions	sqft	Counted as living area
2	W.I.C.	11'7" x 8'1"	92 sq. ft	Yes
3	Foyer	8'6" x 22'8"	169 sq. ft	Yes
4	Living Room	16'2" x 19'10"	301 sq. ft	Yes
5	Garage	33'2" x 23'7"	736 sq. ft	No
6	Hall	3'8" x 4'11"	18 sq. ft	Yes
7	Deck	23'10" x 17'8"	390 sq. ft	No
8	Bedroom	14'2" x 11'1"	140 sq. ft	Yes
9	Laundry	7'1" x 8'7"	57 sq. ft	Yes
10	Primary Bedroom	13'8" x 16'8"	228 sq. ft	Yes
11	Bedroom	14'2" x 10'3"	118 sq. ft	Yes
12	Bath	4'2" x 4'11"	20 sq. ft	Yes

Home data report

3410 Bridgetown Rd,Bristol,IN,US

#		Dimensions	sqft	Counted as living area
13	Storage	4'10" x 2'8"	13 sq. ft	No
14	Primary Bath	10'3" x 17'0"	123 sq. ft	Yes
15	Bath	5'8" x 4'11"	28 sq. ft	Yes
16	Kitchen	14'2" x 10'9"	153 sq. ft	Yes
17	Dining Area	11'2" x 15'2"	167 sq. ft	Yes

1 Floor 1 - Basement



Dimensions: 41'1" x 53'3"  
Area: 1727 sq. ft  
Counted as living area: No

Heated: Yes  
Finished: No  
Enclosed: Yes  
Contiguous: Yes  
Permitted: Yes  
Wet space: No  
Addition: No  
Conversion: No

2 Floor 2 - W.I.C.



Dimensions: 11'7" x 8'1"  
Area: 92 sq. ft  
Counted as living area: Yes

Heated: Yes  
Finished: Yes  
Enclosed: Yes  
Contiguous: Yes  
Permitted: Yes  
Wet space: No  
Addition: No  
Conversion: No

3 Floor 2 - Foyer



Dimensions: 8'6" x 22'8"  
Area: 169 sq. ft  
Counted as living area: Yes

Heated: Yes  
Finished: Yes  
Enclosed: Yes  
Contiguous: Yes  
Permitted: Yes  
Wet space: No  
Addition: No  
Conversion: No

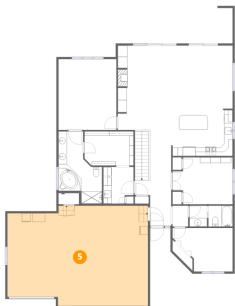
4 Floor 2 - Living Room



Dimensions: 16'2" x 19'10"  
Area: 301 sq. ft  
Counted as living area: Yes

Heated: Yes  
Finished: Yes  
Enclosed: Yes  
Contiguous: Yes  
Permitted: Yes  
Wet space: No  
Addition: No  
Conversion: No

5 Floor 2 - Garage



Dimensions: 33'2" x 23'7"  
Area: 736 sq. ft  
Counted as living area: No

Heated: No  
Finished: No  
Enclosed: Yes  
Contiguous: Yes  
Permitted: Yes  
Wet space: No  
Addition: No  
Conversion: No

6 Floor 2 - Hall



Dimensions: 3'8" x 4'11"  
Area: 18 sq. ft  
Counted as living area: Yes

Heated: Yes  
Finished: Yes  
Enclosed: Yes  
Contiguous: Yes  
Permitted: Yes  
Wet space: No  
Addition: No  
Conversion: No

7 Floor 2 - Deck



Dimensions: 23'10" x 17'8"  
Area: 390 sq. ft  
Counted as living area: No

Heated: No  
Finished: No  
Enclosed: No  
Contiguous: Yes  
Permitted: Yes  
Wet space: No  
Addition: No  
Conversion: No

8 Floor 2 - Bedroom



Dimensions: 14'2" x 11'1"  
Area: 140 sq. ft  
Counted as living area: Yes

Heated: Yes  
Finished: Yes  
Enclosed: Yes  
Contiguous: Yes  
Permitted: Yes  
Wet space: No  
Addition: No  
Conversion: No

9 Floor 2 - Laundry



Dimensions: 7'1" x 8'7"  
Area: 57 sq. ft  
Counted as living area: Yes

Heated: Yes  
Finished: Yes  
Enclosed: Yes  
Contiguous: Yes  
Permitted: Yes  
Wet space: No  
Addition: No  
Conversion: No

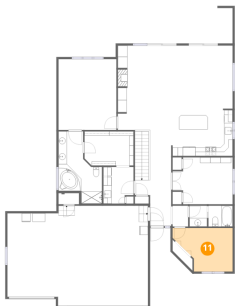
10 Floor 2 - Primary Bedroom



Dimensions: 13'8" x 16'8"  
Area: 228 sq. ft  
Counted as living area: Yes

Heated: Yes  
Finished: Yes  
Enclosed: Yes  
Contiguous: Yes  
Permitted: Yes  
Wet space: No  
Addition: No  
Conversion: No

11 Floor 2 - Bedroom



Dimensions: 14'2" x 10'3"  
Area: 118 sq. ft  
Counted as living area: Yes

Heated: Yes  
Finished: Yes  
Enclosed: Yes  
Contiguous: Yes  
Permitted: Yes  
Wet space: No  
Addition: No  
Conversion: No



12 Floor 2 - Bath



Dimensions: 4'2" x 4'11"  
Area: 20 sq. ft  
Counted as living area: Yes

Heated: Yes  
Finished: Yes  
Enclosed: Yes  
Contiguous: Yes  
Permitted: Yes  
Wet space: Yes  
Addition: No  
Conversion: No

13 Floor 2 - Storage



Dimensions: 4'10" x 2'8"  
Area: 13 sq. ft  
Counted as living area: No

Heated: No  
Finished: No  
Enclosed: No  
Contiguous: Yes  
Permitted: Yes  
Wet space: No  
Addition: No  
Conversion: No

14 Floor 2 - Primary Bath



Dimensions: 10'3" x 17'0"  
Area: 123 sq. ft  
Counted as living area: Yes

Heated: Yes  
Finished: Yes  
Enclosed: Yes  
Contiguous: Yes  
Permitted: Yes  
Wet space: Yes  
Addition: No  
Conversion: No

15 Floor 2 - Bath



Dimensions: 5'8" x 4'11"  
Area: 28 sq. ft  
Counted as living area: Yes

Heated: Yes  
Finished: Yes  
Enclosed: Yes  
Contiguous: Yes  
Permitted: Yes  
Wet space: Yes  
Addition: No  
Conversion: No

16 Floor 2 - Kitchen



Dimensions: 14'2" x 10'9"  
Area: 153 sq. ft  
Counted as living area: Yes

Heated: Yes  
Finished: Yes  
Enclosed: Yes  
Contiguous: Yes  
Permitted: Yes  
Wet space: No  
Addition: No  
Conversion: No

17 Floor 2 - Dining Area



Dimensions: 11'2" x 15'2"  
Area: 167 sq. ft  
Counted as living area: Yes

Heated: Yes  
Finished: Yes  
Enclosed: Yes  
Contiguous: Yes  
Permitted: Yes  
Wet space: No  
Addition: No  
Conversion: No