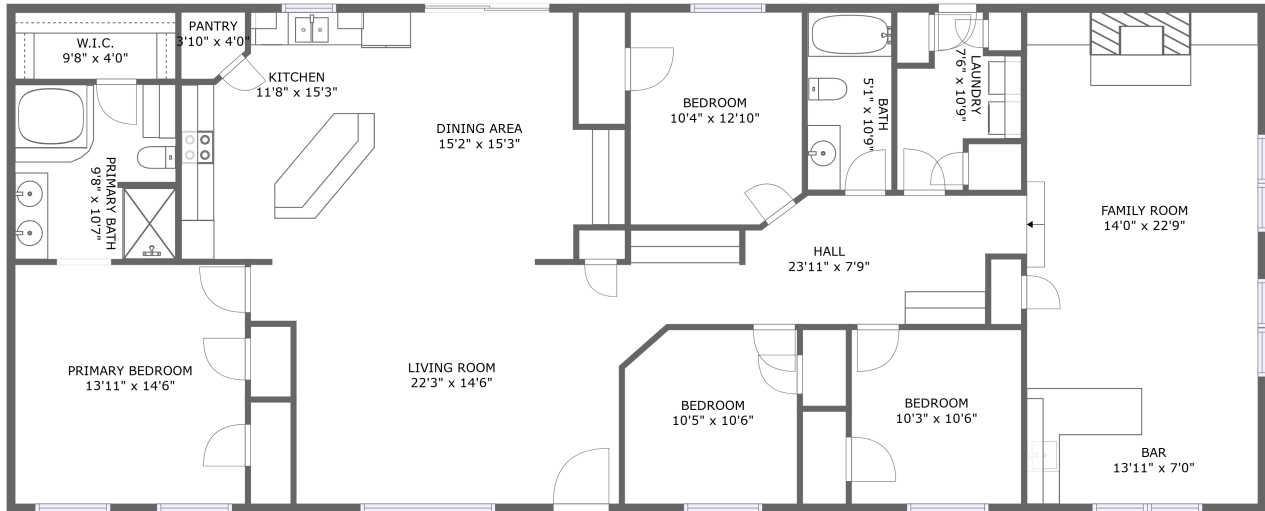


# 18491 Beet Rd, Nisland, SD, US




FLOOR 1

## Property Summary

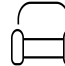
 **0** garages

 **4** bedrooms

 **2** bathrooms

 **0** half baths

 **1** floors

 **2,339** Gross Living Area sqft

 **2,339** total sqft

# 18491 Beet Rd, Nisland, SD, US



## Room Dimensions

Floor 1

Total sqft: 2339

Living area: 2339

#	Room name	Dimensions	Area (sqft)	Counted as Living Area
1	Living Room	22'3" x 14'6"	292 sq. ft	Yes
2	Kitchen	11'8" x 15'3"	160 sq. ft	Yes
3	Bedroom	10'5" x 10'6"	107 sq. ft	Yes
4	W.i.c.	9'8" x 4'0"	39 sq. ft	Yes
5	Laundry	7'6" x 10'9"	56 sq. ft	Yes
6	Family Room	14'0" x 22'9"	318 sq. ft	Yes
7	Bar	13'11" x 7'0"	97 sq. ft	Yes
8	Bedroom	10'4" x 12'10"	131 sq. ft	Yes
9	Dining Area	15'2" x 15'3"	201 sq. ft	Yes
10	Bedroom	10'3" x 10'6"	108 sq. ft	Yes
11	Primary Bath	9'8" x 10'7"	101 sq. ft	Yes

Scan captured on Tue, 29 Oct 2024 01:46:54 GMT

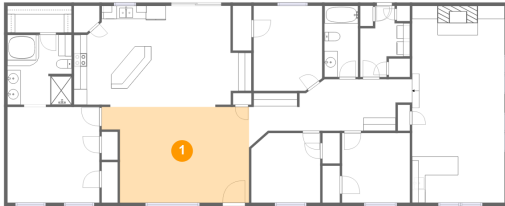
Information is calculated by CubiCasa technology; deemed highly reliable but not guaranteed.

**18491 Beet Rd,Nisland,SD,US**

#	Room name	Dimensions	Area (sqft)	Counted as Living Area
12	Bath	5'1" x 10'9"	55 sq. ft	Yes
13	Hall	23'11" x 7'9"	162 sq. ft	Yes
14	Pantry	3'10" x 4'0"	14 sq. ft	Yes
15	Primary Bedroom	13'11" x 14'6"	201 sq. ft	Yes

# 18491 Beet Rd, Nisland, SD, US

## 1 Floor 1 - Living Room



**Dimensions:** 22'3" x 14'6"  
**Area:** 292 sq. ft  
**Counted as Living Area:**  
Yes

**Heated:** Yes  
**Finished:** Yes  
**Enclosed:** Yes  
**Contiguous:**  
Yes  
**Permitted:** Yes  
**Wet Space:** No  
**Addition:** No  
**Conversion:** No

## 2 Floor 1 - Kitchen



**Dimensions:** 11'8" x 15'3"  
**Area:** 160 sq. ft  
**Counted as Living Area:**  
Yes

**Heated:** Yes  
**Finished:** Yes  
**Enclosed:** Yes  
**Contiguous:**  
Yes  
**Permitted:** Yes  
**Wet Space:** No  
**Addition:** No  
**Conversion:** No

# 18491 Beet Rd, Nisland, SD, US

## 3 Floor 1 - Bedroom



**Dimensions:** 10'5" x 10'6"  
**Area:** 107 sq. ft  
**Counted as Living Area:**  
Yes

**Heated:** Yes  
**Finished:** Yes  
**Enclosed:** Yes  
**Contiguous:**  
Yes  
**Permitted:** Yes  
**Wet Space:** No  
**Addition:** No  
**Conversion:** No

## 4 Floor 1 - W.i.c.



**Dimensions:** 9'8" x 4'0"  
**Area:** 39 sq. ft  
**Counted as Living Area:**  
Yes

**Heated:** Yes  
**Finished:** Yes  
**Enclosed:** Yes  
**Contiguous:**  
Yes  
**Permitted:** Yes  
**Wet Space:** No  
**Addition:** No  
**Conversion:** No

## 5 Floor 1 - Laundry



**Dimensions:** 7'6" x 10'9"  
**Area:** 56 sq. ft  
**Counted as Living Area:**  
Yes

**Heated:** Yes  
**Finished:** Yes  
**Enclosed:** Yes  
**Contiguous:**  
Yes  
**Permitted:** Yes  
**Wet Space:** No  
**Addition:** No  
**Conversion:** No

# 18491 Beet Rd, Nisland, SD, US

## 6 Floor 1 - Family Room



**Dimensions:** 14'0" x 22'9"  
**Area:** 318 sq. ft  
**Counted as Living Area:**  
Yes

**Heated:** Yes  
**Finished:** Yes  
**Enclosed:** Yes  
**Contiguous:**  
Yes  
**Permitted:** Yes  
**Wet Space:** No  
**Addition:** No  
**Conversion:** No

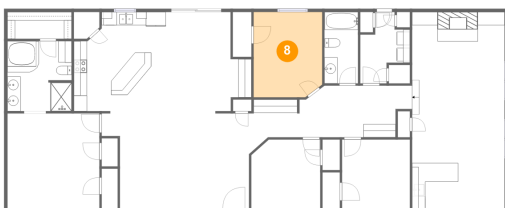
## 7 Floor 1 - Bar



**Dimensions:** 13'11" x 7'0"  
**Area:** 97 sq. ft  
**Counted as Living Area:**  
Yes

**Heated:** Yes  
**Finished:** Yes  
**Enclosed:** Yes  
**Contiguous:**  
Yes  
**Permitted:** Yes  
**Wet Space:** No  
**Addition:** No  
**Conversion:** No

## 8 Floor 1 - Bedroom

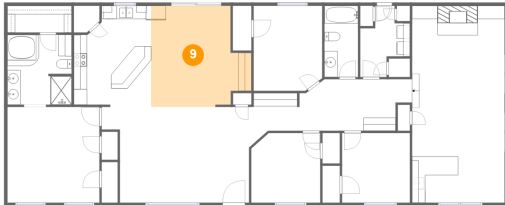


**Dimensions:** 10'4" x 12'10"  
**Area:** 131 sq. ft  
**Counted as Living Area:**  
Yes

**Heated:** Yes  
**Finished:** Yes  
**Enclosed:** Yes  
**Contiguous:**  
Yes  
**Permitted:** Yes  
**Wet Space:** No  
**Addition:** No  
**Conversion:** No

# 18491 Beet Rd, Nisland, SD, US

## 9 Floor 1 - Dining Area



**Dimensions:** 15'2" x 15'3"  
**Area:** 201 sq. ft  
**Counted as Living Area:**  
Yes

**Heated:** Yes  
**Finished:** Yes  
**Enclosed:** Yes  
**Contiguous:**  
Yes  
**Permitted:** Yes  
**Wet Space:** No  
**Addition:** No  
**Conversion:** No

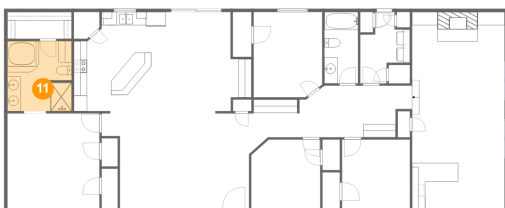
## 10 Floor 1 - Bedroom



**Dimensions:** 10'3" x 10'6"  
**Area:** 108 sq. ft  
**Counted as Living Area:**  
Yes

**Heated:** Yes  
**Finished:** Yes  
**Enclosed:** Yes  
**Contiguous:**  
Yes  
**Permitted:** Yes  
**Wet Space:** No  
**Addition:** No  
**Conversion:** No

## 11 Floor 1 - Primary Bath

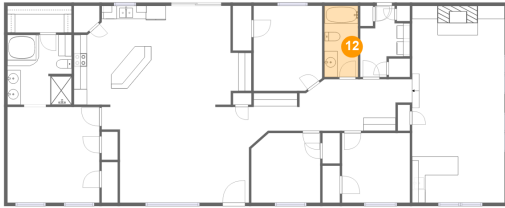


**Dimensions:** 9'8" x 10'7"  
**Area:** 101 sq. ft  
**Counted as Living Area:**  
Yes

**Heated:** Yes  
**Finished:** Yes  
**Enclosed:** Yes  
**Contiguous:**  
Yes  
**Permitted:** Yes  
**Wet Space:** Yes  
**Addition:** No  
**Conversion:** No

# 18491 Beet Rd, Nisland, SD, US

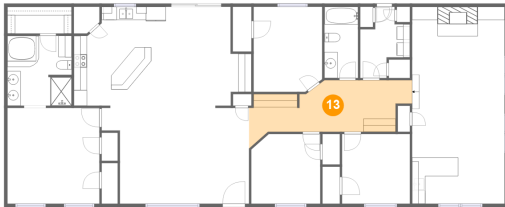
## 12 Floor 1 - Bath



Dimensions: 5'1" x 10'9"  
Area: 55 sq. ft  
Counted as Living Area:  
Yes

Heated: Yes  
Finished: Yes  
Enclosed: Yes  
Contiguous:  
Yes  
Permitted: Yes  
Wet Space: Yes  
Addition: No  
Conversion: No

## 13 Floor 1 - Hall



Dimensions: 23'11" x 7'9"  
Area: 162 sq. ft  
Counted as Living Area:  
Yes

Heated: Yes  
Finished: Yes  
Enclosed: Yes  
Contiguous:  
Yes  
Permitted: Yes  
Wet Space: No  
Addition: No  
Conversion: No

## 14 Floor 1 - Pantry



Dimensions: 3'10" x 4'0"  
Area: 14 sq. ft  
Counted as Living Area:  
Yes

Heated: Yes  
Finished: Yes  
Enclosed: Yes  
Contiguous:  
Yes  
Permitted: Yes  
Wet Space: No  
Addition: No  
Conversion: No



# 18491 Beet Rd, Nisland, SD, US

## 15 Floor 1 - Primary Bedroom



**Dimensions:** 13'11" x 14'6"

**Area:** 201 sq. ft

**Counted as Living Area:**  
Yes

**Heated:** Yes

**Finished:** Yes

**Enclosed:** Yes

**Contiguous:**  
Yes

**Permitted:** Yes

**Wet Space:** No

**Addition:** No

**Conversion:** No