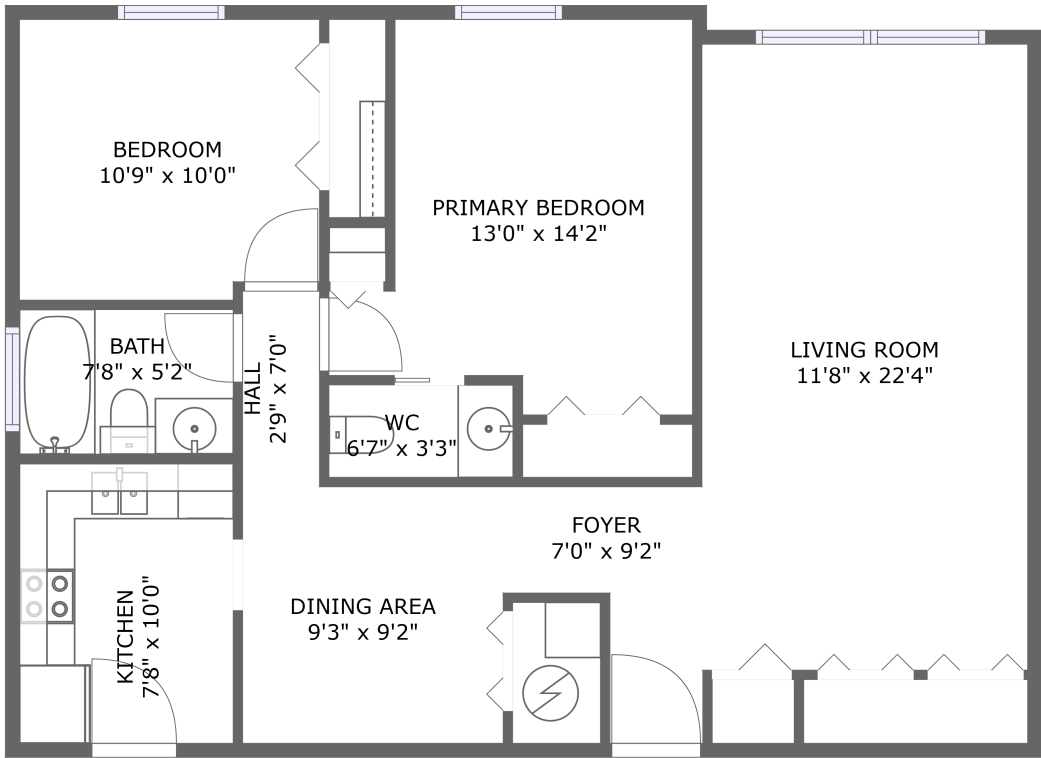


Home report

2700 Bayshore Boulevard, Harbor Pointe, Dunedin, Pinellas
County, Florida, United States, 34698, 4310



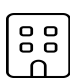
FLOOR 1


Total Area: 922 sq. ft


Floor 1: 922 sq. ft


Excluded: Walls: 0 sq. ft

Property summary

 **1** Floors

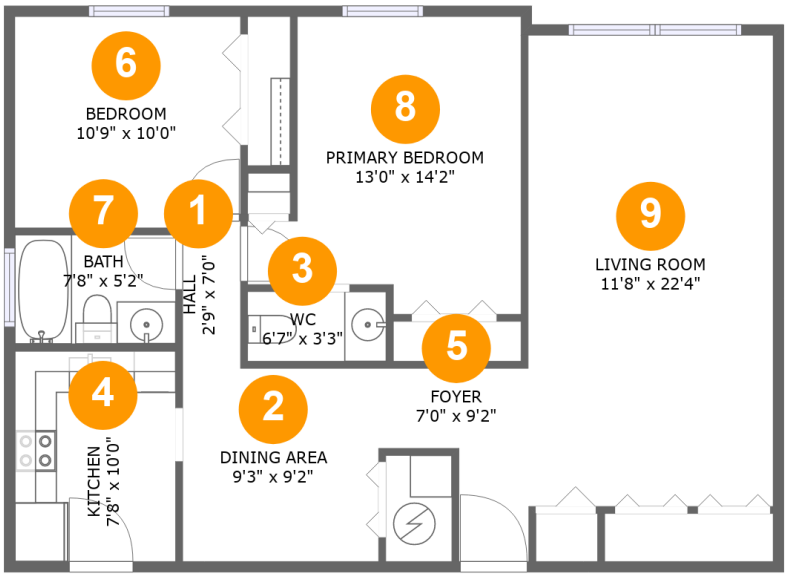
 **2** Bedrooms

 **1** Bathrooms

 **1** Half baths

Home report

2700 Bayshore Boulevard, Harbor Pointe, Dunedin, Pinellas County, Florida, United States, 34698, 4310



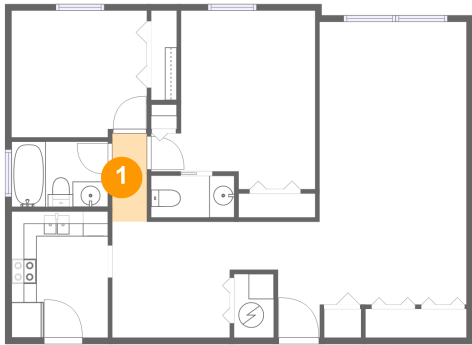
Room dimensions

Floor 1 Total:922sqft Excluded: 0sqft

#		Max Dimensions	sqft	Included
1	Hall	2'9" x 7'0"	19 sq. ft	Yes
2	Dining Area	9'3" x 9'2"	85 sq. ft	Yes
3	WC	6'7" x 3'3"	22 sq. ft	Yes
4	Kitchen	7'8" x 10'0"	76 sq. ft	Yes
5	Foyer	7'0" x 9'2"	45 sq. ft	Yes
6	Bedroom	10'9" x 10'0"	106 sq. ft	Yes
7	Bath	7'8" x 5'2"	39 sq. ft	Yes
8	Primary Bedroom	13'0" x 14'2"	151 sq. ft	Yes
9	Living Room	11'8" x 22'4"	260 sq. ft	Yes

2700 Bayshore Boulevard, Harbor Pointe, Dunedin, Pinellas
County, Florida, United States, 34698, 4310

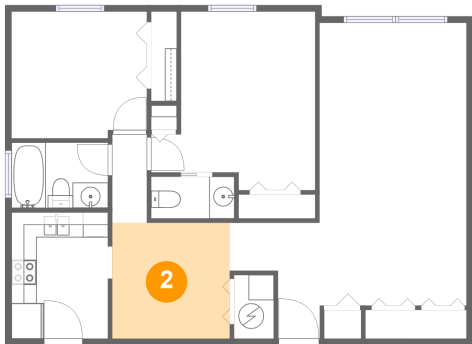
1 Floor 1 - Hall



Max Dimensions: 2'9" x 7'0"
Calculated Area: 19 sq. ft
Included: Yes

Heated: Yes
Finished: Yes
Enclosed: Yes
Contiguous: Yes
Permitted: Yes
Wet space: No
Addition: No
Conversion: No

2 Floor 1 - Dining Area



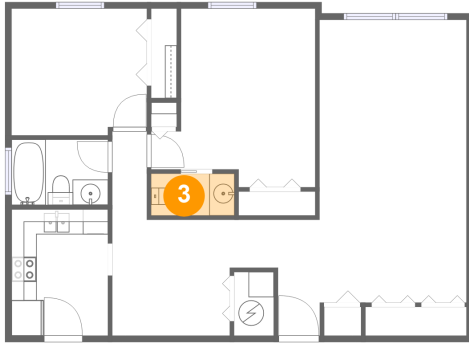
Max Dimensions: 9'3" x 9'2"
Calculated Area: 85 sq. ft
Included: Yes

Heated: Yes
Finished: Yes
Enclosed: Yes
Contiguous: Yes
Permitted: Yes
Wet space: No
Addition: No
Conversion: No

Home report

2700 Bayshore Boulevard, Harbor Pointe, Dunedin, Pinellas
County, Florida, United States, 34698, 4310

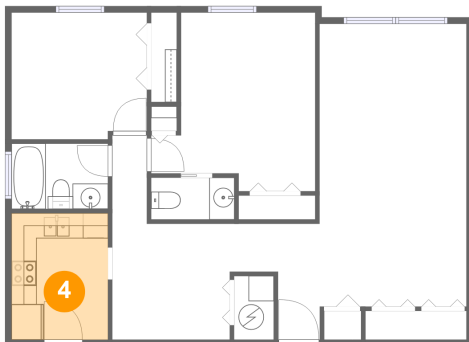
3 Floor 1 - WC



Max Dimensions: 6'7" x 3'3"
Calculated Area: 22 sq. ft
Included: Yes

Heated: Yes
Finished: Yes
Enclosed: Yes
Contiguous: Yes
Permitted: Yes
Wet space: Yes
Addition: No
Conversion: No

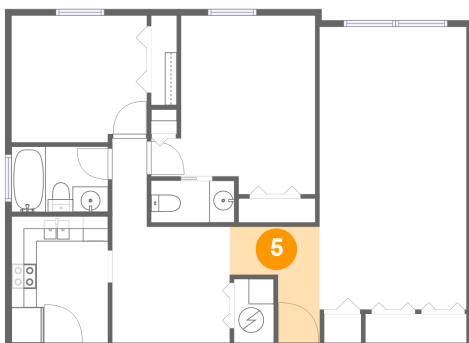
4 Floor 1 - Kitchen



Max Dimensions: 7'8" x 10'0"
Calculated Area: 76 sq. ft
Included: Yes

Heated: Yes
Finished: Yes
Enclosed: Yes
Contiguous: Yes
Permitted: Yes
Wet space: No
Addition: No
Conversion: No

5 Floor 1 - Foyer



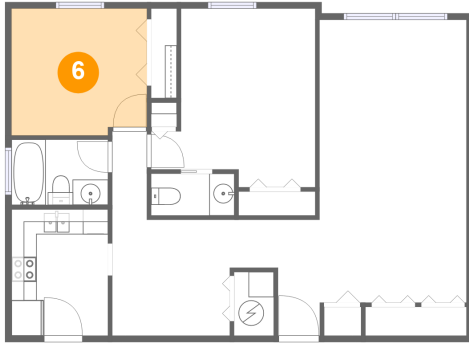
Max Dimensions: 7'0" x 9'2"
Calculated Area: 45 sq. ft
Included: Yes

Heated: Yes
Finished: Yes
Enclosed: Yes
Contiguous: Yes
Permitted: Yes
Wet space: No
Addition: No
Conversion: No

Home report

2700 Bayshore Boulevard, Harbor Pointe, Dunedin, Pinellas County, Florida, United States, 34698, 4310

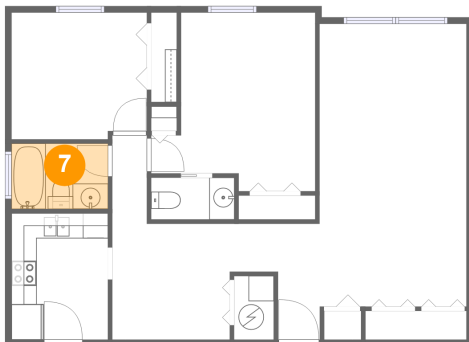
6 Floor 1 - Bedroom



Max Dimensions: 10'9" x 10'0"
Calculated Area: 106 sq. ft
Included: Yes

Heated: Yes
Finished: Yes
Enclosed: Yes
Contiguous: Yes
Permitted: Yes
Wet space: No
Addition: No
Conversion: No

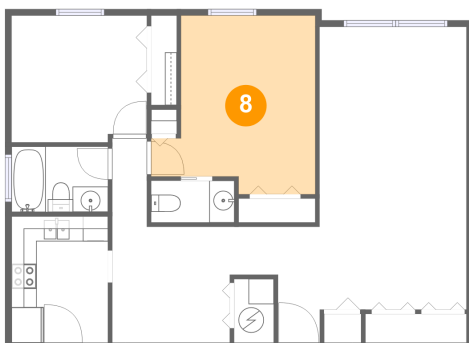
7 Floor 1 - Bath



Max Dimensions: 7'8" x 5'2"
Calculated Area: 39 sq. ft
Included: Yes

Heated: Yes
Finished: Yes
Enclosed: Yes
Contiguous: Yes
Permitted: Yes
Wet space: Yes
Addition: No
Conversion: No

8 Floor 1 - Primary Bedroom

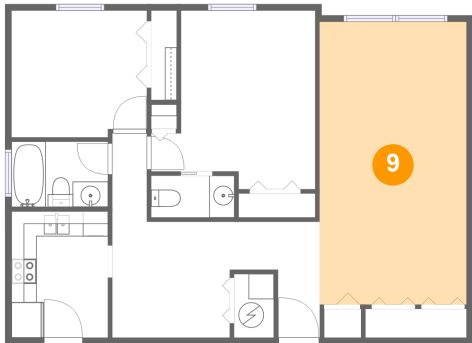


Max Dimensions: 13'0" x 14'2"
Calculated Area: 151 sq. ft
Included: Yes

Heated: Yes
Finished: Yes
Enclosed: Yes
Contiguous: Yes
Permitted: Yes
Wet space: No
Addition: No
Conversion: No

2700 Bayshore Boulevard, Harbor Pointe, Dunedin, Pinellas
County, Florida, United States, 34698, 4310

9 Floor 1 - Living Room



Max Dimensions: 11'8" x 22'4"
Calculated Area: 260 sq. ft
Included: Yes

Heated: Yes
Finished: Yes
Enclosed: Yes
Contiguous: Yes
Permitted: Yes
Wet space: No
Addition: No
Conversion: No