

SKG Productions
780.887.7491
info@skgproductions.ca

Date September 2, 2024
Address 3813 Macneil Heath NW
City Edmonton
Agent Nadia Osman
Brokerage ReMax
Property Type Three-Storey



	Square Feet	Square Meters	
Level 2	Above Grade	456.17	42.38
Level 2	Above Grade	1740.31	161.68
Main Level	Above Grade	1652.04	153.48
Basement	Below Grade	1466.04	136.20
Total	Above Grade	3848.53	357.54

Level 3	Feet	Meters
Loft	31 ft, 6 in x 15 ft, 1 in	9.61 m x 4.61 m

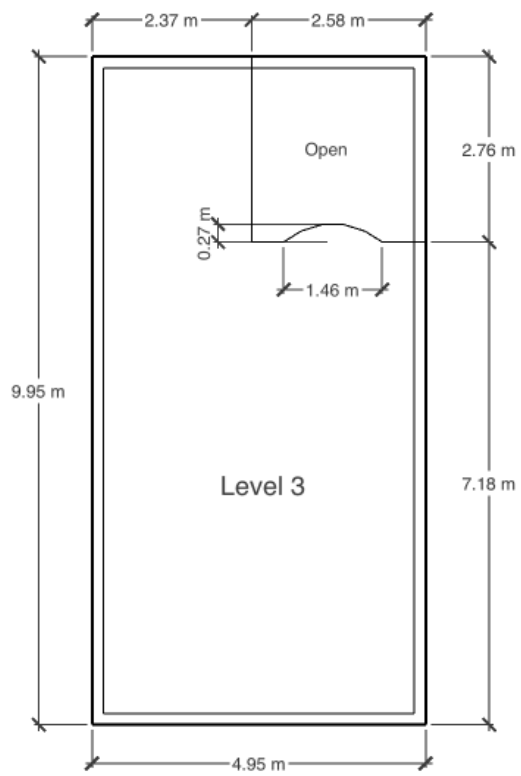
Level 2	Feet	Meters
Bonus Room	21 ft, 9 in x 14 ft, 10 in	6.64 m x 4.53 m
Primary Bedroom	17 ft, 11 in x 13 ft, 10 in	5.47 m x 4.22 m
Ensuite	17 ft, 4 in x 11 ft, 2 in	5.29 m x 3.41 m
WIC	8 ft, 8 in x 8 ft, 3 in	2.65 m x 2.50 m
Bedroom 2	12 ft, 11 in x 12 ft, 10 in	3.95 m x 3.92 m
Ensuite	5 ft, 9 in x 6 ft, 0 in	1.77 m x 1.83 m
Bedroom 3	13 ft, 11 in x 12 ft, 11 in	4.25 m x 3.93 m
Ensuite	5 ft, 9 in x 6 ft, 1 in	1.76 m x 1.84 m

Main Level	Feet	Meters
Living Room	15 ft, 4 in x 15 ft, 4 in	4.66 m x 4.66 m
Dining Room	7 ft, 9 in x 13 ft, 7 in	2.35 m x 4.14 m
Kitchen	14 ft, 2 in x 14 ft, 1 in	4.31 m x 4.30 m
Bedroom 1	18 ft, 2 in x 14 ft, 9 in	5.54 m x 4.49 m
Pantry	10 ft, 2 in x 4 ft, 11 in	3.11 m x 1.51 m
Bathroom	5 ft, 1 in x 8 ft, 8 in	1.55 m x 2.65 m
Laundry	13 ft, 11 in x 13 ft, 11 in	4.25 m x 4.24 m
Office	15 ft, 11 in x 10 ft, 11 in	4.86 m x 3.34 m
Garage	35 ft, 6 in x 22 ft, 11 in	10.82 m x 6.98 m

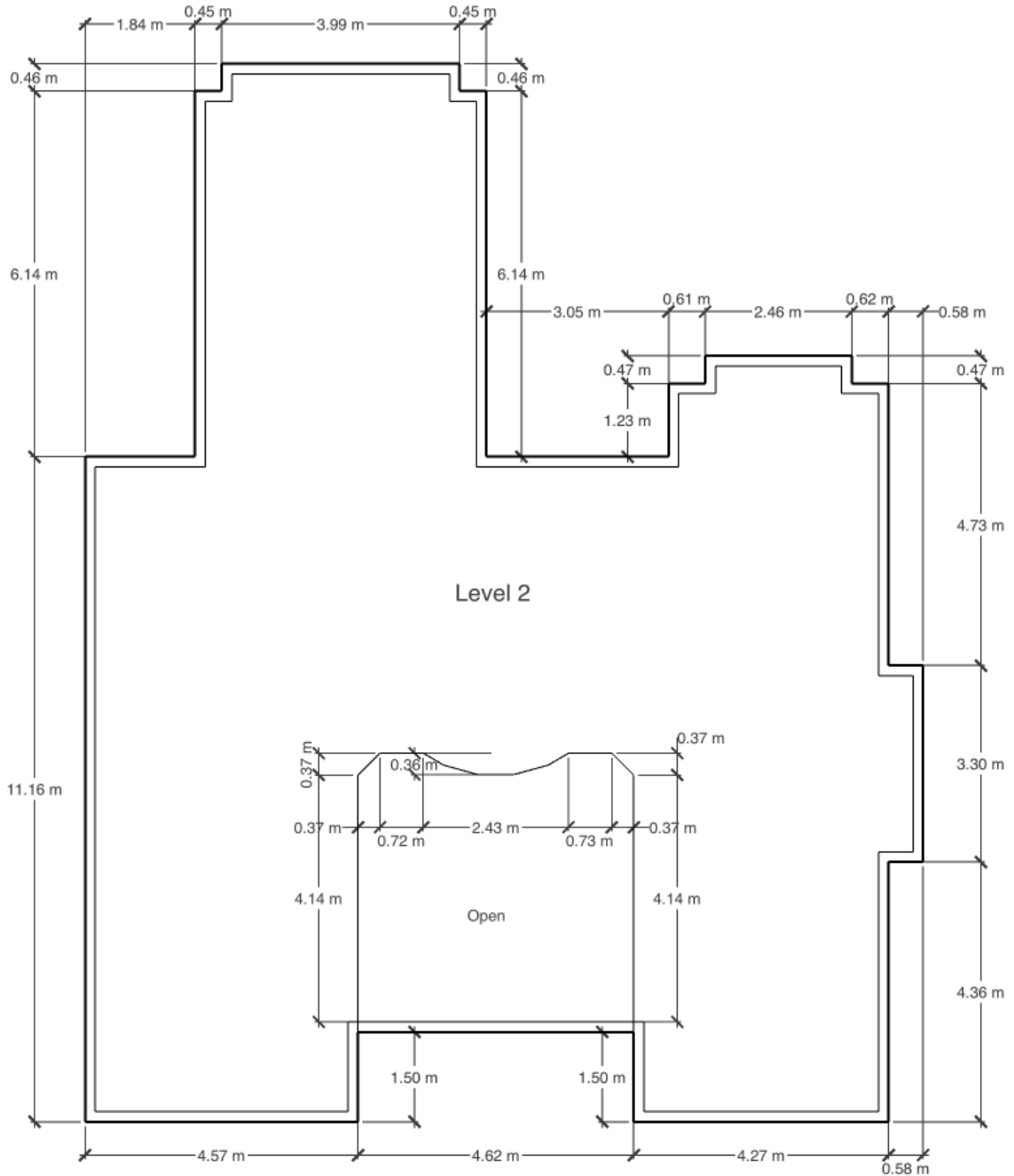
Basement

	Feet	Meters
Family Room	20 ft, 4 in x 15 ft, 0 in	6.19 m x 4.58 m
Theatre Room	21 ft, 4 in x 14 ft, 2 in	6.50 m x 4.32 m
Bar	10 ft, 3 in x 7 ft, 11 in	3.13 m x 2.42 m
Den/Office	10 ft, 11 in x 14 ft, 2 in	3.33 m x 4.31 m
Bedroom	10 ft, 1 in x 13 ft, 7 in	3.08 m x 4.15 m
Bedroom	10 ft, 1 in x 13 ft, 5 in	3.06 m x 4.10 m
Bathroom	4 ft, 11 in x 9 ft, 5 in	1.51 m x 2.88 m
Storage	7 ft, 3 in x 12 ft, 5 in	2.22 m x 3.80 m
Mechanical	7 ft, 3 in x 13 ft, 7 in	2.20 m x 4.14 m

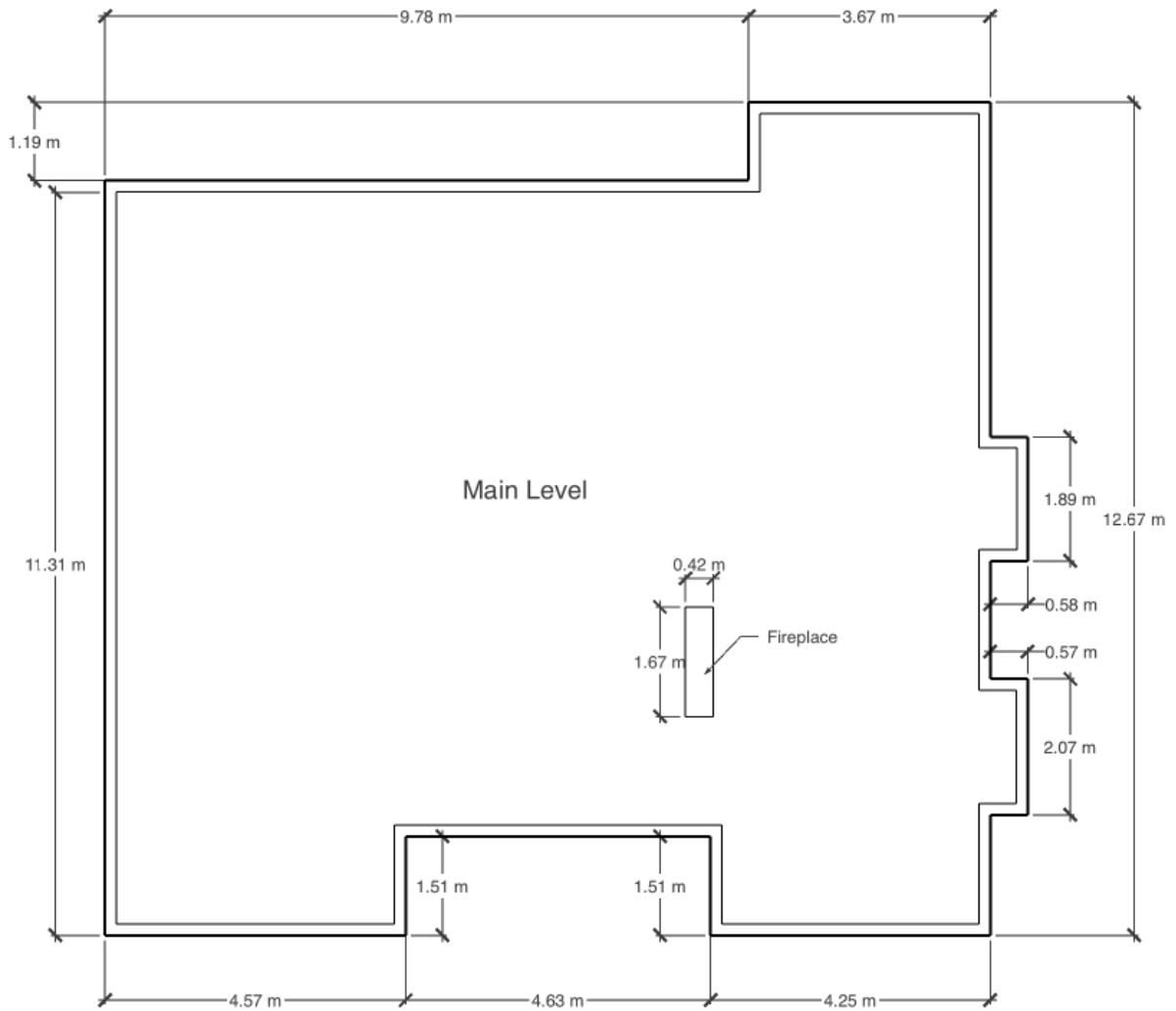
3813 MacNeil Heath NW Edmonton



3813 MacNeil Heath NW Edmonton



3813 MacNeil Heath NW Edmonton



3813 MacNeil Heath NW Edmonton

