

Home report

5227 Archer Drive, Cave Spring, Roanoke, Roanoke County,
Virginia, United States, 24018



Total Area: 3268 sq. ft
Below Ground: 920 sq. ft, Floor 2: 1174 sq. ft, Floor 3: 1174 sq. ft
Excluded: Utility 236 sq. ft, Fireplace 31 sq. ft, Garage 622 sq. ft, Outdoor Porch Screen 267 sq. ft, Outdoor Porch 99 sq. ft

Property summary

**3**
Floors

**5**
Bedrooms

**3**
Bathrooms

Home report

**5227 Archer Drive, Cave Spring, Roanoke, Roanoke County,
Virginia, United States, 24018**



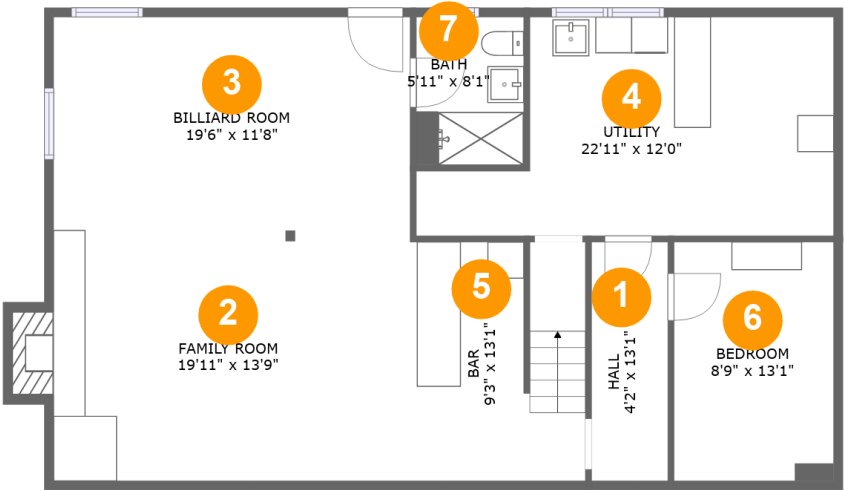
1
Half baths



1
Garages

Home report

5227 Archer Drive, Cave Spring, Roanoke, Roanoke County,
Virginia, United States, 24018



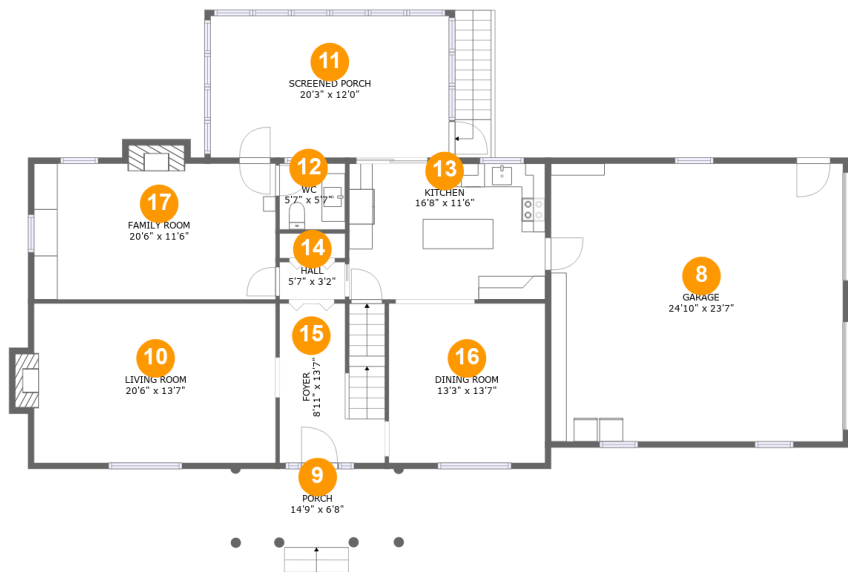
Room dimensions

Floor 1 Below ground Total:920sqft Excluded: 249sqft

#		Max Dimensions	sqft	Included
1	Hall	4'2" x 13'1"	55 sq. ft	Yes
2	Family Room	19'11" x 13'9"	284 sq. ft	Yes
3	Billiard Room	19'6" x 11'8"	229 sq. ft	Yes
4	Utility	22'11" x 12'0"	222 sq. ft	No
5	Bar	9'3" x 13'1"	118 sq. ft	Yes
6	Bedroom	8'9" x 13'1"	115 sq. ft	Yes
7	Bath	5'11" x 8'1"	48 sq. ft	Yes

Home report

5227 Archer Drive, Cave Spring, Roanoke, Roanoke County,
Virginia, United States, 24018

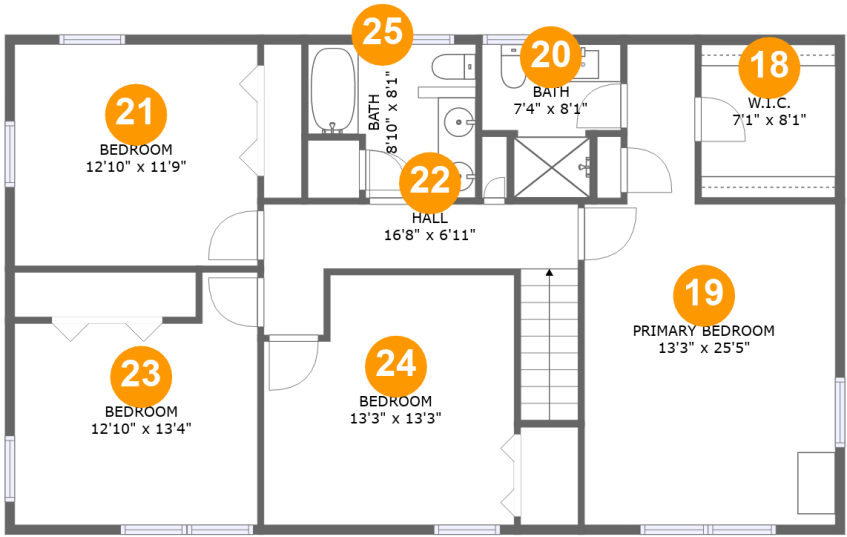


Room dimensions

Floor 2 Total:1174sqft Excluded: 1006sqft

#		Max Dimensions	sqft	Included
8	Garage	24'10" x 23'7"	585 sq. ft	No
9	Porch	14'9" x 6'8"	99 sq. ft	No
10	Living Room	20'6" x 13'7"	286 sq. ft	Yes
11	Screened Porch	20'3" x 12'0"	244 sq. ft	No
12	WC	5'7" x 5'7"	31 sq. ft	Yes
13	Kitchen	16'8" x 11'6"	192 sq. ft	Yes
14	Hall	5'7" x 3'2"	18 sq. ft	Yes
15	Foyer	8'11" x 13'7"	119 sq. ft	Yes
16	Dining Room	13'3" x 13'7"	180 sq. ft	Yes
17	Family Room	20'6" x 11'6"	244 sq. ft	Yes

5227 Archer Drive, Cave Spring, Roanoke, Roanoke County,
Virginia, United States, 24018



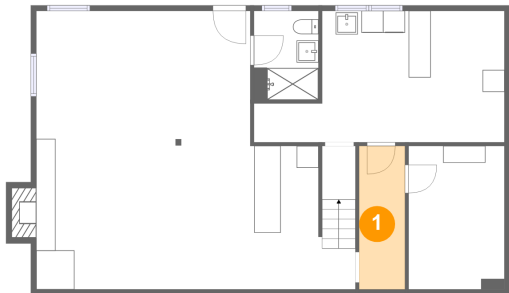
Room dimensions

Floor 3 Total:1174sqft Excluded: 0sqft

#		Max Dimensions	sqft	Included
18	W.I.C.	7'1" x 8'1"	58 sq. ft	Yes
19	Primary Bedroom	13'3" x 25'5"	256 sq. ft	Yes
20	Bath	7'4" x 8'1"	48 sq. ft	Yes
21	Bedroom	12'10" x 11'9"	151 sq. ft	Yes
22	Hall	16'8" x 6'11"	92 sq. ft	Yes
23	Bedroom	12'10" x 13'4"	145 sq. ft	Yes
24	Bedroom	13'3" x 13'3"	163 sq. ft	Yes
25	Bath	8'10" x 8'1"	62 sq. ft	Yes

5227 Archer Drive, Cave Spring, Roanoke, Roanoke County,
Virginia, United States, 24018

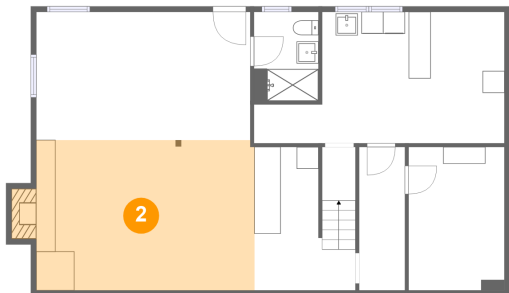
1 Floor 1 - Hall



Max Dimensions: 4'2" x 13'1"
Calculated Area: 55 sq. ft
Included: Yes

Heated: Yes
Finished: Yes
Enclosed: Yes
Contiguous: Yes
Permitted: Yes
Wet space: No
Addition: No
Conversion: No

2 Floor 1 - Family Room



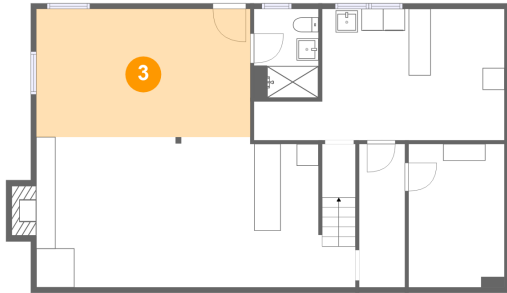
Max Dimensions: 19'11" x 13'9"
Calculated Area: 284 sq. ft
Included: Yes

Heated: Yes
Finished: Yes
Enclosed: Yes
Contiguous: Yes
Permitted: Yes
Wet space: No
Addition: No
Conversion: No

Home report

5227 Archer Drive, Cave Spring, Roanoke, Roanoke County,
Virginia, United States, 24018

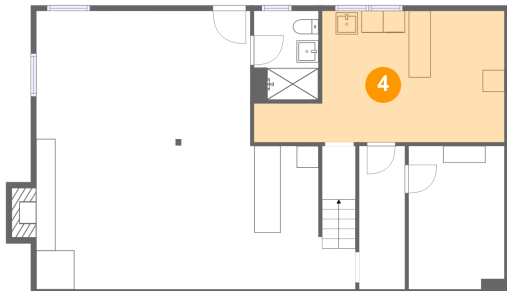
3 Floor 1 - Billiard Room



Max Dimensions: 19'6" x 11'8"
Calculated Area: 229 sq. ft
Included: Yes

Heated: Yes
Finished: Yes
Enclosed: Yes
Contiguous: Yes
Permitted: Yes
Wet space: No
Addition: No
Conversion: No

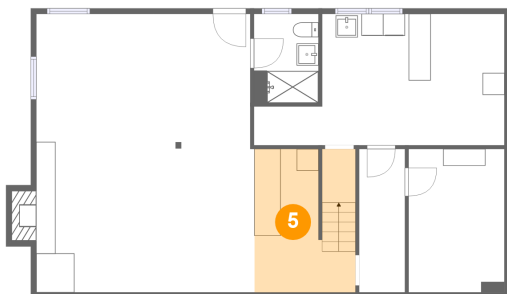
4 Floor 1 - Utility



Max Dimensions: 22'11" x 12'0"
Calculated Area: 222 sq. ft
Included: No

Heated: Yes
Finished: No
Enclosed: Yes
Contiguous: Yes
Permitted: Yes
Wet space: No
Addition: No
Conversion: No

5 Floor 1 - Bar

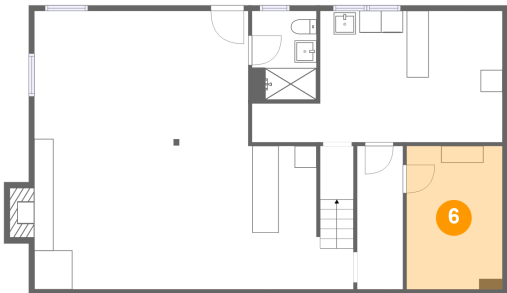


Max Dimensions: 9'3" x 13'1"
Calculated Area: 118 sq. ft
Included: Yes

Heated: Yes
Finished: Yes
Enclosed: Yes
Contiguous: Yes
Permitted: Yes
Wet space: No
Addition: No
Conversion: No

5227 Archer Drive, Cave Spring, Roanoke, Roanoke County,
Virginia, United States, 24018

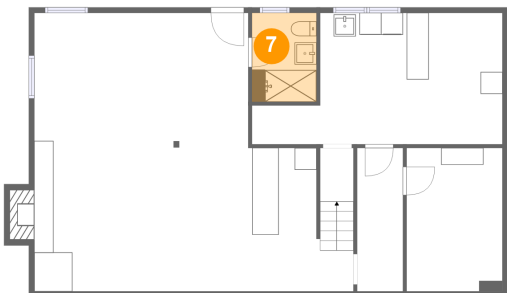
6 Floor 1 - Bedroom



Max Dimensions: 8'9" x 13'1"
Calculated Area: 115 sq. ft
Included: Yes

Heated: Yes
Finished: Yes
Enclosed: Yes
Contiguous: Yes
Permitted: Yes
Wet space: No
Addition: No
Conversion: No

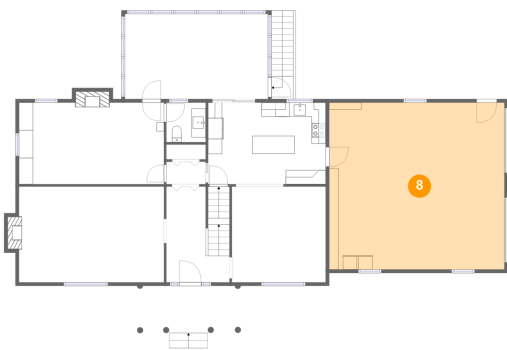
7 Floor 1 - Bath



Max Dimensions: 5'11" x 8'1"
Calculated Area: 48 sq. ft
Included: Yes

Heated: Yes
Finished: Yes
Enclosed: Yes
Contiguous: Yes
Permitted: Yes
Wet space: Yes
Addition: No
Conversion: No

8 Floor 2 - Garage



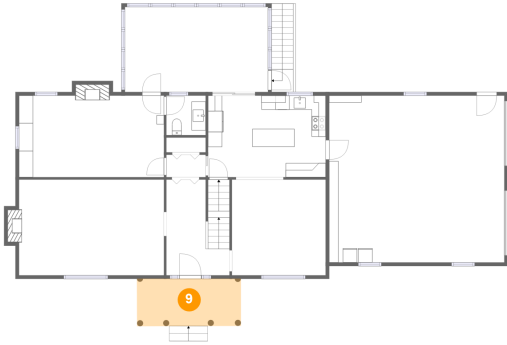
Max Dimensions: 24'10" x 23'7"
Calculated Area: 585 sq. ft
Included: No

Heated: No
Finished: No
Enclosed: Yes
Contiguous: Yes
Permitted: Yes
Wet space: No
Addition: No
Conversion: No

Home report

5227 Archer Drive, Cave Spring, Roanoke, Roanoke County,
Virginia, United States, 24018

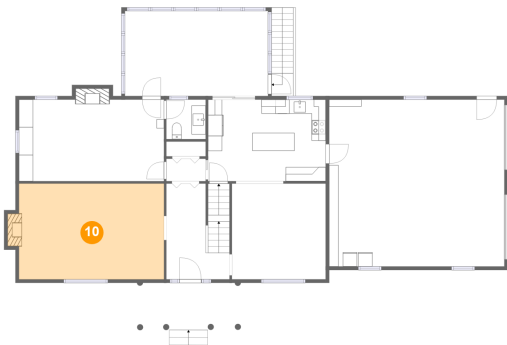
9 Floor 2 - Porch



Max Dimensions: 14'9" x 6'8"
Calculated Area: 99 sq. ft
Included: No

Heated: No
Finished: Yes
Enclosed: No
Contiguous: Yes
Permitted: Yes
Wet space: No
Addition: No
Conversion: No

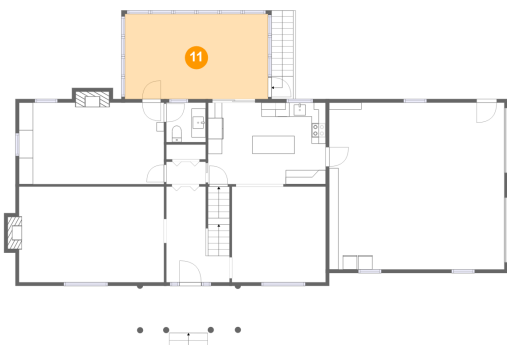
10 Floor 2 - Living Room



Max Dimensions: 20'6" x 13'7"
Calculated Area: 286 sq. ft
Included: Yes

Heated: Yes
Finished: Yes
Enclosed: Yes
Contiguous: Yes
Permitted: Yes
Wet space: No
Addition: No
Conversion: No

11 Floor 2 - Screened Porch

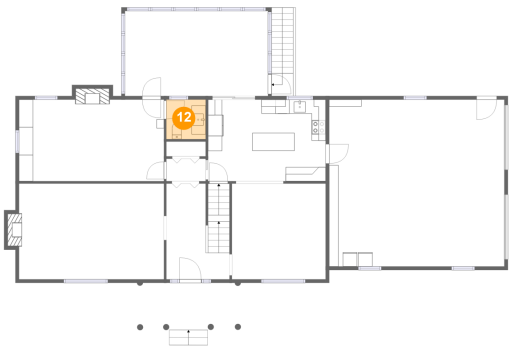


Max Dimensions: 20'3" x 12'0"
Calculated Area: 244 sq. ft
Included: No

Heated: No
Finished: Yes
Enclosed: No
Contiguous: Yes
Permitted: Yes
Wet space: No
Addition: No
Conversion: No

5227 Archer Drive, Cave Spring, Roanoke, Roanoke County,
Virginia, United States, 24018

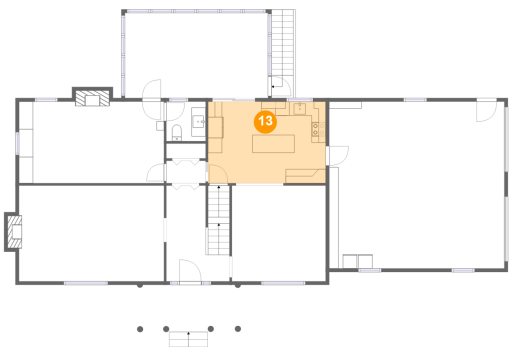
12 Floor 2 - WC



Max Dimensions: 5'7" x 5'7"
Calculated Area: 31 sq. ft
Included: Yes

Heated: Yes
Finished: Yes
Enclosed: Yes
Contiguous: Yes
Permitted: Yes
Wet space: Yes
Addition: No
Conversion: No

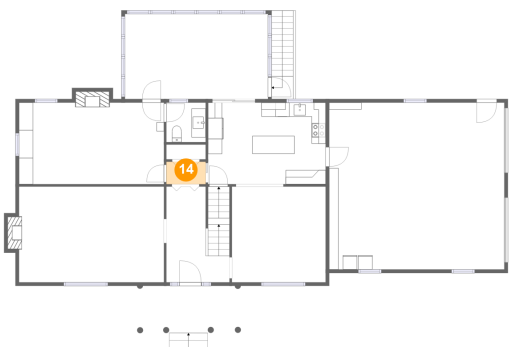
13 Floor 2 - Kitchen



Max Dimensions: 16'8" x 11'6"
Calculated Area: 192 sq. ft
Included: Yes

Heated: Yes
Finished: Yes
Enclosed: Yes
Contiguous: Yes
Permitted: Yes
Wet space: No
Addition: No
Conversion: No

14 Floor 2 - Hall



Max Dimensions: 5'7" x 3'2"
Calculated Area: 18 sq. ft
Included: Yes

Heated: Yes
Finished: Yes
Enclosed: Yes
Contiguous: Yes
Permitted: Yes
Wet space: No
Addition: No
Conversion: No

5227 Archer Drive, Cave Spring, Roanoke, Roanoke County,
Virginia, United States, 24018

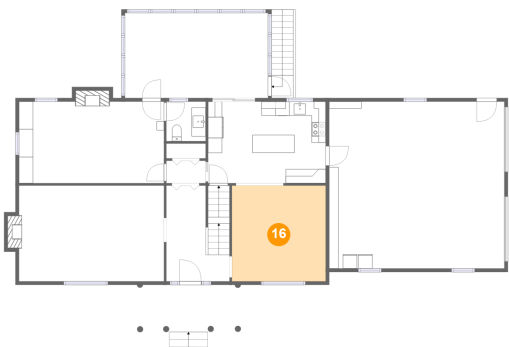
15 Floor 2 - Foyer



Max Dimensions: 8'11" x 13'7"
Calculated Area: 119 sq. ft
Included: Yes

Heated: Yes
Finished: Yes
Enclosed: Yes
Contiguous: Yes
Permitted: Yes
Wet space: No
Addition: No
Conversion: No

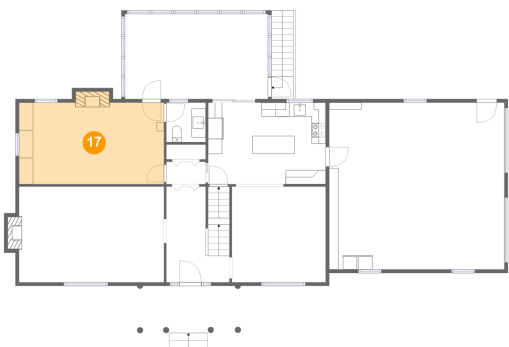
16 Floor 2 - Dining Room



Max Dimensions: 13'3" x 13'7"
Calculated Area: 180 sq. ft
Included: Yes

Heated: Yes
Finished: Yes
Enclosed: Yes
Contiguous: Yes
Permitted: Yes
Wet space: No
Addition: No
Conversion: No

17 Floor 2 - Family Room



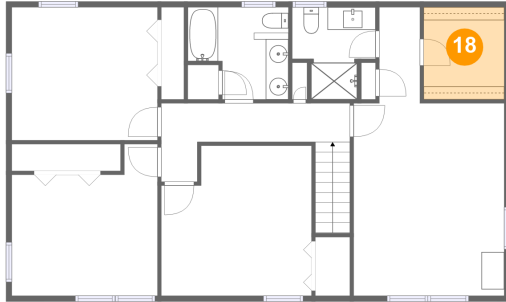
Max Dimensions: 20'6" x 11'6"
Calculated Area: 244 sq. ft
Included: Yes

Heated: Yes
Finished: Yes
Enclosed: Yes
Contiguous: Yes
Permitted: Yes
Wet space: No
Addition: No
Conversion: No

Home report

5227 Archer Drive, Cave Spring, Roanoke, Roanoke County,
Virginia, United States, 24018

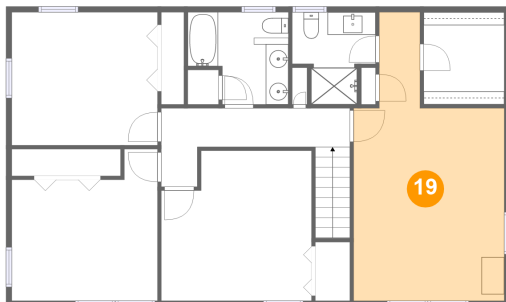
18 Floor 3 - W.I.C.



Max Dimensions: 7'1" x 8'1"
Calculated Area: 58 sq. ft
Included: Yes

Heated: Yes
Finished: Yes
Enclosed: Yes
Contiguous: Yes
Permitted: Yes
Wet space: No
Addition: No
Conversion: No

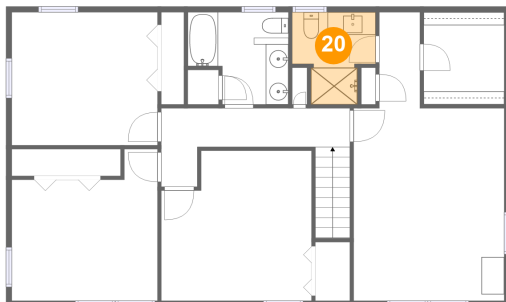
19 Floor 3 - Primary Bedroom



Max Dimensions: 13'3" x 25'5"
Calculated Area: 256 sq. ft
Included: Yes

Heated: Yes
Finished: Yes
Enclosed: Yes
Contiguous: Yes
Permitted: Yes
Wet space: No
Addition: No
Conversion: No

20 Floor 3 - Bath



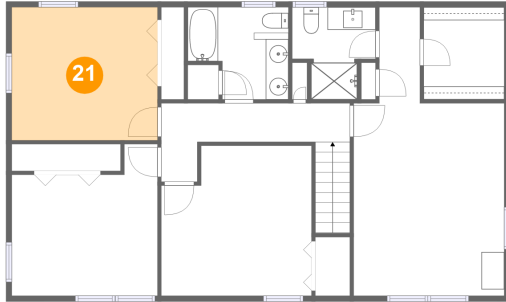
Max Dimensions: 7'4" x 8'1"
Calculated Area: 48 sq. ft
Included: Yes

Heated: Yes
Finished: Yes
Enclosed: Yes
Contiguous: Yes
Permitted: Yes
Wet space: Yes
Addition: No
Conversion: No

Home report

5227 Archer Drive, Cave Spring, Roanoke, Roanoke County,
Virginia, United States, 24018

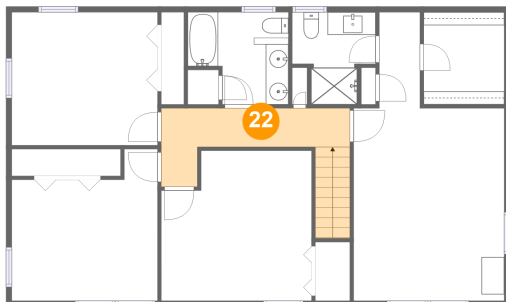
21 Floor 3 - Bedroom



Max Dimensions: 12'10" x 11'9"
Calculated Area: 151 sq. ft
Included: Yes

Heated: Yes
Finished: Yes
Enclosed: Yes
Contiguous: Yes
Permitted: Yes
Wet space: No
Addition: No
Conversion: No

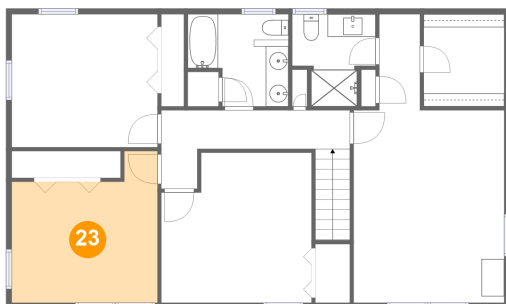
22 Floor 3 - Hall



Max Dimensions: 16'8" x 6'11"
Calculated Area: 92 sq. ft
Included: Yes

Heated: Yes
Finished: Yes
Enclosed: Yes
Contiguous: Yes
Permitted: Yes
Wet space: No
Addition: No
Conversion: No

23 Floor 3 - Bedroom

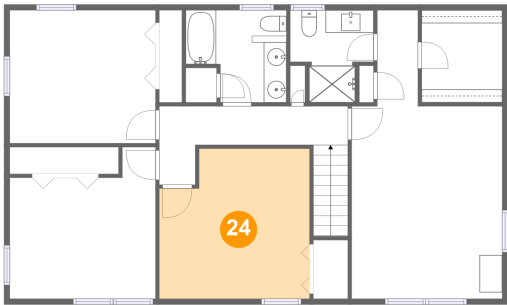


Max Dimensions: 12'10" x 13'4"
Calculated Area: 145 sq. ft
Included: Yes

Heated: Yes
Finished: Yes
Enclosed: Yes
Contiguous: Yes
Permitted: Yes
Wet space: No
Addition: No
Conversion: No

5227 Archer Drive, Cave Spring, Roanoke, Roanoke County,
Virginia, United States, 24018

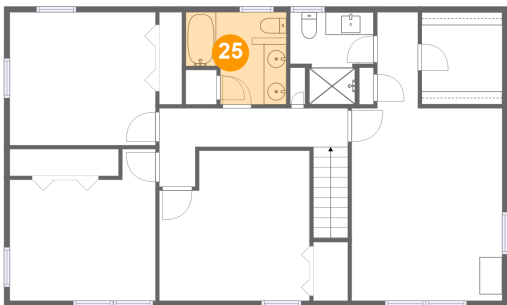
24 Floor 3 - Bedroom



Max Dimensions: 13'3" x 13'3"
Calculated Area: 163 sq. ft
Included: Yes

Heated: Yes
Finished: Yes
Enclosed: Yes
Contiguous: Yes
Permitted: Yes
Wet space: No
Addition: No
Conversion: No

25 Floor 3 - Bath



Max Dimensions: 8'10" x 8'1"
Calculated Area: 62 sq. ft
Included: Yes

Heated: Yes
Finished: Yes
Enclosed: Yes
Contiguous: Yes
Permitted: Yes
Wet space: Yes
Addition: No
Conversion: No