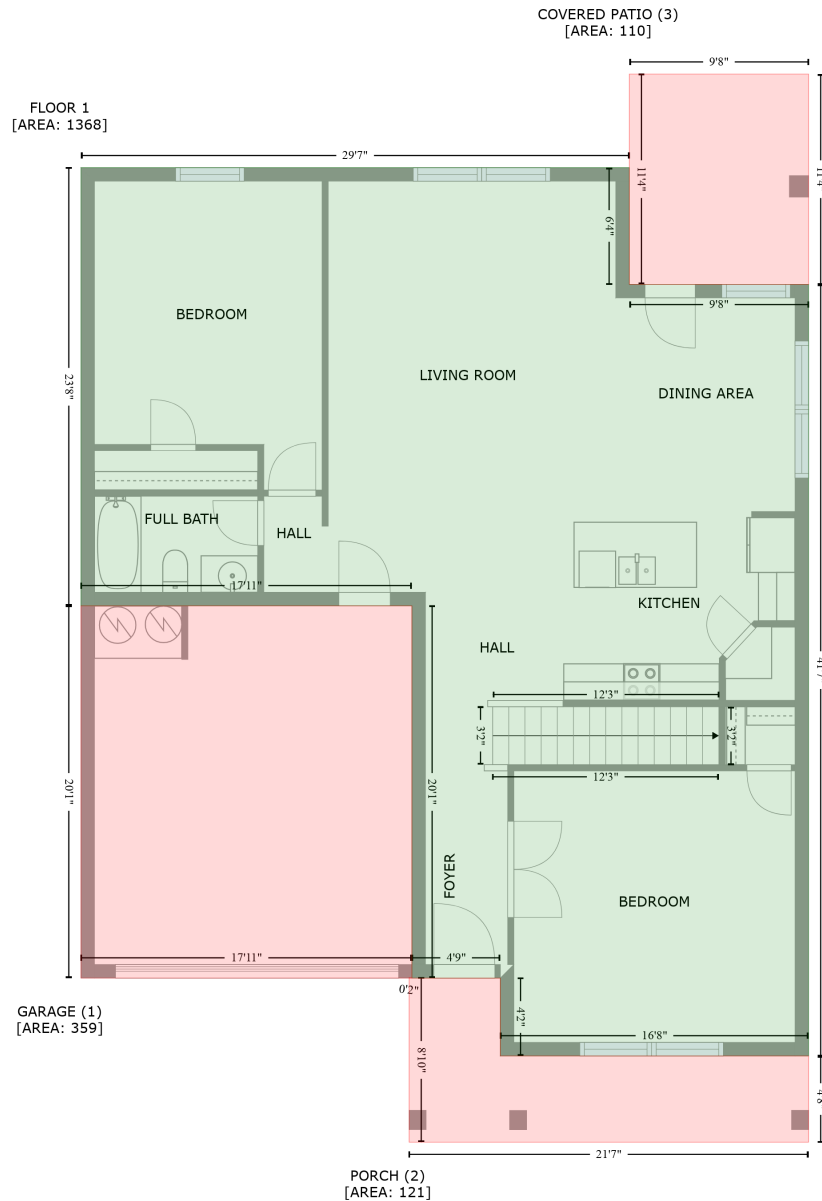


121 River Springs Ct, New Market, Madison County, Alabama, United States, 35761

Gross Living Area: 3182 sq. ft



Space	Area (sq. ft)	Calculation <small>Coordinate Polygon Area Algorithm using inches</small>
FLOOR 1 (Living area)	1368	$-\left((384.1 + 384.1) * (145.9 - 221.5) + (384.1 + 500.3) * (221.5 - 221.5) + (500.3 + 500.3) * (221.5 - 721) + (500.3 + 300.5) * (721 - 721) + (300.5 + 300.5) * (721 - 670.5) + (300.5 + 243.2) * (670.5 - 670.5) + (243.2 + 243.2) * (670.5 - 429.6) + (243.2 + 28.7) * (429.6 - 429.6) + (28.7 + 28.7) * (429.6 - 145.9) + (28.7 + 384.1) * (145.9 - 145.9)\right) * 0.5 * 0.00694$
GARAGE (Non-living area)	359	$-\left((243.2 + 243.2) * (429.6 - 670.5) + (243.2 + 28.7) * (670.5 - 670.5) + (28.7 + 28.7) * (670.5 - 429.6) + (28.7 + 243.2) * (429.6 - 429.6)\right) * 0.5 * 0.00694$

121 River Springs Ct, New Market, Madison County, Alabama, United States, 35761

Gross Living Area: 3182 sq. ft

Space	Area (sq. ft)	Calculation <small>Coordinate Polygon Area Algorithm using inches</small>
PORCH (Non-living area)	121	$-((241.4 + 243.2) * (670.3 - 670.5) + (243.2 + 300.5) * (670.5 - 670.5) + (300.5 + 300.5) * (670.5 - 721) + (300.5 + 500.3) * (721 - 721) + (500.3 + 500.3) * (721 - 776.8) + (500.3 + 241.4) * (776.8 - 776.8) + (241.4 + 241.4) * (776.8 - 670.3)) * 0.5 * 0.00694$
COVERED PATIO (Non-living area)	110	$-((500.3 + 500.3) * (85.4 - 221.5) + (500.3 + 384.1) * (221.5 - 221.5) + (384.1 + 384.1) * (221.5 - 85.4) + (384.1 + 500.3) * (85.4 - 85.4)) * 0.5 * 0.00694$

121 River Springs Ct, New Market, Madison County, Alabama, United States, 35761

Gross Living Area: 3182 sq. ft

FLOOR 2
[AREA: 1814]



Space	Area (sq. ft)	Calculation <small>Coordinate Polygon Area Algorithm using inches</small>
FLOOR 2 (Living area)	1814	$ \begin{aligned} & -((500.3 + 500.3) * (145.9 - 721) + (500.3 + 300.5) * (721 - 721) + (300.5 + 300.5) * (721 - 670.5) \\ & + (300.5 + 209.5) * (670.5 - 670.5) + (209.5 + 209.5) * (670.5 - 697.8) + (209.5 + 73.1) * (697.8 - \\ & 697.8) + (73.1 + 73.1) * (697.8 - 670.5) + (73.1 + 28.7) * (670.5 - 670.5) + (28.7 + 28.7) * (670.5 - \\ & 145.9) + (28.7 + 500.3) * (145.9 - 145.9)) * 0.5 * 0.00694 \end{aligned} $