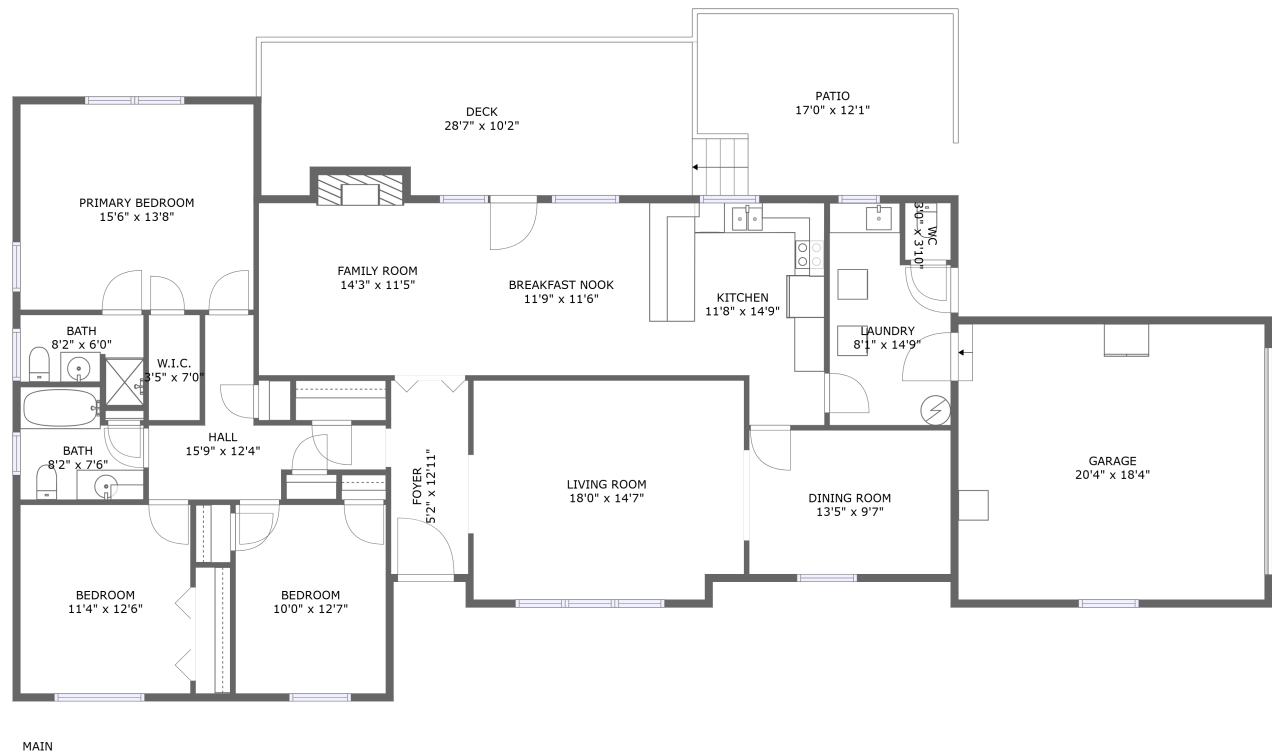


Home report

315 Cornell Road, Rocky Mount, Franklin County, Virginia,  
United States, 24151




Total Area: 1852 sq. ft

Floor 1: 1852 sq. ft

Excluded: Garage 373 sq. ft, Deck 280 sq. ft, Patio 209 sq. ft, Fireplace 13 sq. ft, Walls: 132 sq. ft

Property summary

 **1** Floors

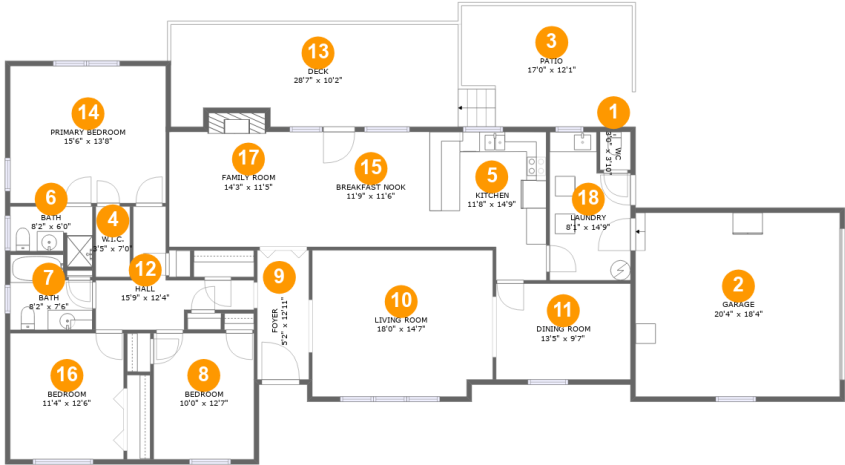
 **3** Bedrooms

 **2** Bathrooms

 **1** Garages

Home report

315 Cornell Road, Rocky Mount, Franklin County, Virginia,  
United States, 24151



Room dimensions

Floor 1 Total:1852sqft Excluded: 875sqft

#		Max Dimensions	sqft	Included
1	WC	3'0" x 3'10"	12 sq. ft	Yes
2	Garage	20'4" x 18'4"	373 sq. ft	No
3	Patio	17'0" x 12'1"	209 sq. ft	No
4	W.I.C.	3'5" x 7'0"	24 sq. ft	Yes
5	Kitchen	11'8" x 14'9"	150 sq. ft	Yes
6	Bath	8'2" x 6'0"	40 sq. ft	Yes
7	Bath	8'2" x 7'6"	54 sq. ft	Yes
8	Bedroom	10'0" x 12'7"	126 sq. ft	Yes
9	Foyer	5'2" x 12'11"	66 sq. ft	Yes
10	Living Room	18'0" x 14'7"	258 sq. ft	Yes
11	Dining Room	13'5" x 9'7"	128 sq. ft	Yes

Home report

**315 Cornell Road, Rocky Mount, Franklin County, Virginia,  
United States, 24151**

#		Max Dimensions	sqft	Included
12	Hall	15'9" x 12'4"	88 sq. ft	Yes
13	Deck	28'7" x 10'2"	280 sq. ft	No
14	Primary Bedroom	15'6" x 13'8"	212 sq. ft	Yes
15	Breakfast Nook	11'9" x 11'6"	135 sq. ft	Yes
16	Bedroom	11'4" x 12'6"	142 sq. ft	Yes
17	Family Room	14'3" x 11'5"	175 sq. ft	Yes
18	Laundry	8'1" x 14'9"	105 sq. ft	Yes

315 Cornell Road, Rocky Mount, Franklin County, Virginia,  
United States, 24151

1 Floor 1 - WC



Max Dimensions: 3'0" x 3'10"  
Calculated Area: 12 sq. ft  
Included: Yes

Heated: Yes  
Finished: Yes  
Enclosed: Yes  
Contiguous: Yes  
Permitted: Yes  
Wet space: Yes  
Addition: No  
Conversion: No

2 Floor 1 - Garage



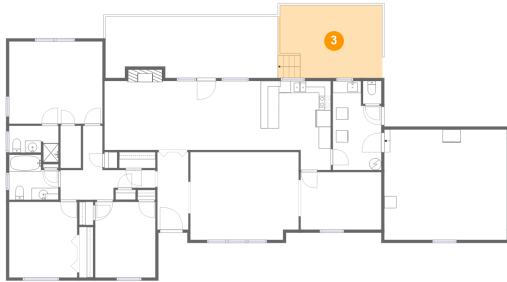
Max Dimensions: 20'4" x 18'4"  
Calculated Area: 373 sq. ft  
Included: No

Heated: No  
Finished: No  
Enclosed: Yes  
Contiguous: Yes  
Permitted: Yes  
Wet space: No  
Addition: No  
Conversion: No

## Home report

315 Cornell Road, Rocky Mount, Franklin County, Virginia,  
United States, 24151

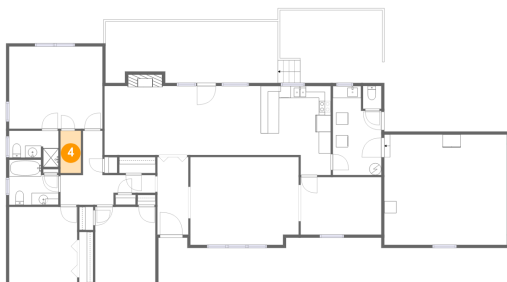
### 3 Floor 1 - Patio



Max Dimensions: 17'0" x 12'1"  
Calculated Area: 209 sq. ft  
Included: No

Heated: No  
Finished: Yes  
Enclosed: No  
Contiguous: Yes  
Permitted: Yes  
Wet space: No  
Addition: No  
Conversion: No

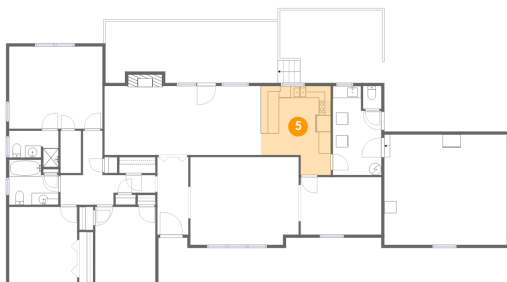
### 4 Floor 1 - W.I.C.



Max Dimensions: 3'5" x 7'0"  
Calculated Area: 24 sq. ft  
Included: Yes

Heated: Yes  
Finished: Yes  
Enclosed: Yes  
Contiguous: Yes  
Permitted: Yes  
Wet space: No  
Addition: No  
Conversion: No

### 5 Floor 1 - Kitchen

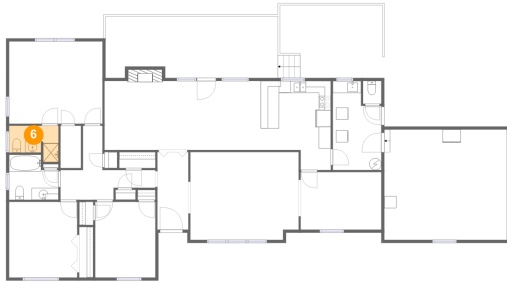


Max Dimensions: 11'8" x 14'9"  
Calculated Area: 150 sq. ft  
Included: Yes

Heated: Yes  
Finished: Yes  
Enclosed: Yes  
Contiguous: Yes  
Permitted: Yes  
Wet space: No  
Addition: No  
Conversion: No

315 Cornell Road, Rocky Mount, Franklin County, Virginia,  
United States, 24151

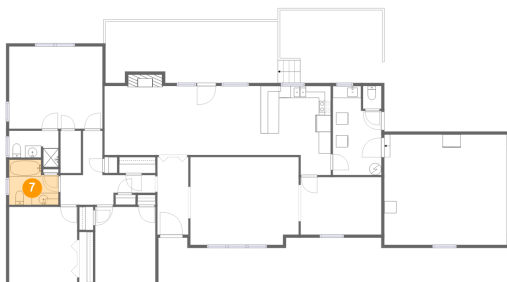
## 6 Floor 1 - Bath



Max Dimensions: 8'2" x 6'0"  
Calculated Area: 40 sq. ft  
Included: Yes

Heated: Yes  
Finished: Yes  
Enclosed: Yes  
Contiguous: Yes  
Permitted: Yes  
Wet space: Yes  
Addition: No  
Conversion: No

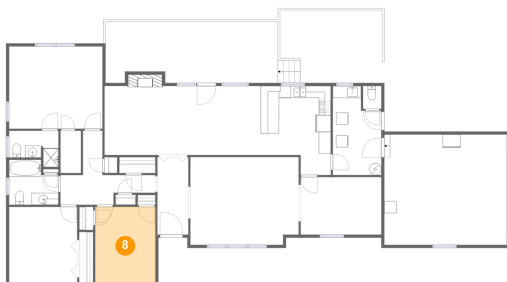
## 7 Floor 1 - Bath



Max Dimensions: 8'2" x 7'6"  
Calculated Area: 54 sq. ft  
Included: Yes

Heated: Yes  
Finished: Yes  
Enclosed: Yes  
Contiguous: Yes  
Permitted: Yes  
Wet space: Yes  
Addition: No  
Conversion: No

## 8 Floor 1 - Bedroom

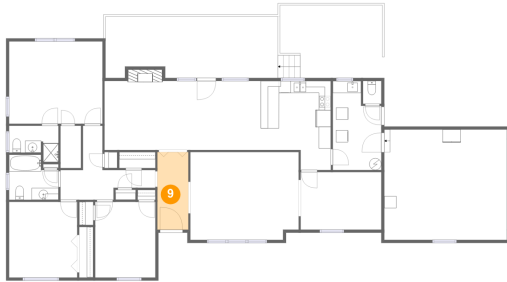


Max Dimensions: 10'0" x  
12'7"  
Calculated Area: 126 sq. ft  
Included: Yes

Heated: Yes  
Finished: Yes  
Enclosed: Yes  
Contiguous:  
Yes  
Permitted: Yes  
Wet space: No  
Addition: No  
Conversion: No

315 Cornell Road, Rocky Mount, Franklin County, Virginia,  
United States, 24151

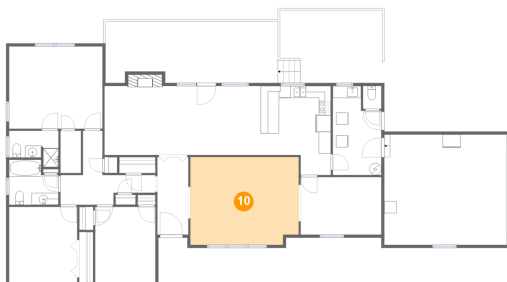
## 9 Floor 1 - Foyer



Max Dimensions: 5'2" x 12'11"  
Calculated Area: 66 sq. ft  
Included: Yes

Heated: Yes  
Finished: Yes  
Enclosed: Yes  
Contiguous: Yes  
Permitted: Yes  
Wet space: No  
Addition: No  
Conversion: No

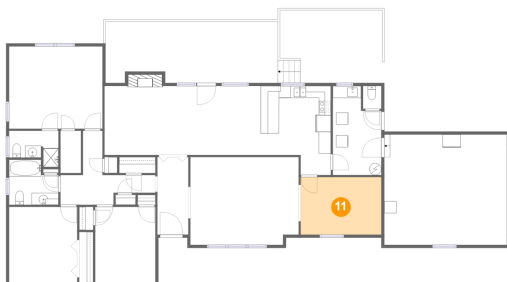
## 10 Floor 1 - Living Room



Max Dimensions: 18'0" x 14'7"  
Calculated Area: 258 sq. ft  
Included: Yes

Heated: Yes  
Finished: Yes  
Enclosed: Yes  
Contiguous: Yes  
Permitted: Yes  
Wet space: No  
Addition: No  
Conversion: No

## 11 Floor 1 - Dining Room



Max Dimensions: 13'5" x 9'7"  
Calculated Area: 128 sq. ft  
Included: Yes

Heated: Yes  
Finished: Yes  
Enclosed: Yes  
Contiguous: Yes  
Permitted: Yes  
Wet space: No  
Addition: No  
Conversion: No

315 Cornell Road, Rocky Mount, Franklin County, Virginia,  
United States, 24151

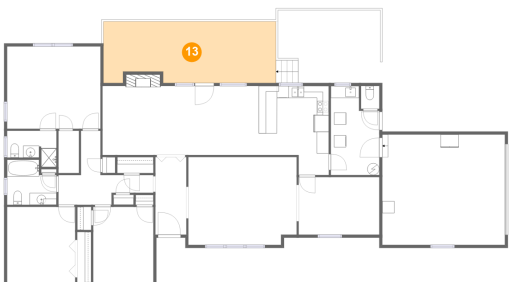
12 Floor 1 - Hall



Max Dimensions: 15'9" x 12'4"  
Calculated Area: 88 sq. ft  
Included: Yes

Heated: Yes  
Finished: Yes  
Enclosed: Yes  
Contiguous: Yes  
Permitted: Yes  
Wet space: No  
Addition: No  
Conversion: No

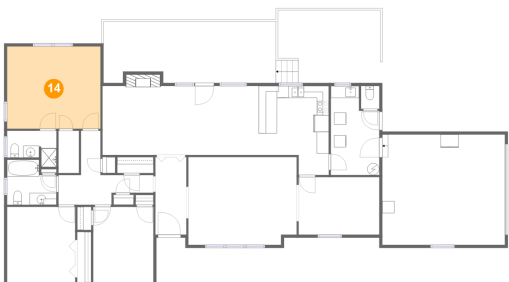
13 Floor 1 - Deck



Max Dimensions: 28'7" x 10'2"  
Calculated Area: 280 sq. ft  
Included: No

Heated: No  
Finished: Yes  
Enclosed: No  
Contiguous: Yes  
Permitted: Yes  
Wet space: No  
Addition: No  
Conversion: No

14 Floor 1 - Primary Bedroom



Max Dimensions: 15'6" x 13'8"  
Calculated Area: 212 sq. ft  
Included: Yes

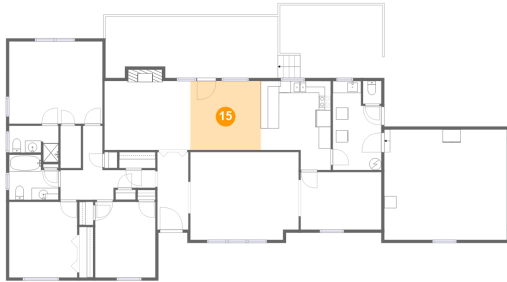
Heated: Yes  
Finished: Yes  
Enclosed: Yes  
Contiguous: Yes  
Permitted: Yes  
Wet space: No  
Addition: No  
Conversion: No



## Home report

315 Cornell Road, Rocky Mount, Franklin County, Virginia,  
United States, 24151

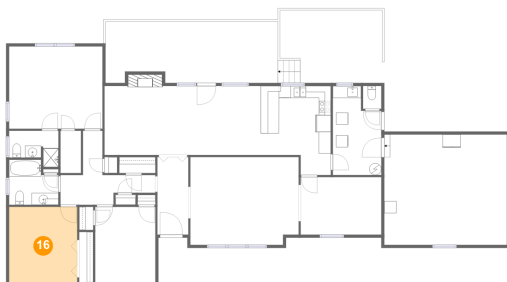
### 15 Floor 1 - Breakfast Nook



Max Dimensions: 11'9" x 11'6"  
Calculated Area: 135 sq. ft  
Included: Yes

Heated: Yes  
Finished: Yes  
Enclosed: Yes  
Contiguous: Yes  
Permitted: Yes  
Wet space: No  
Addition: No  
Conversion: No

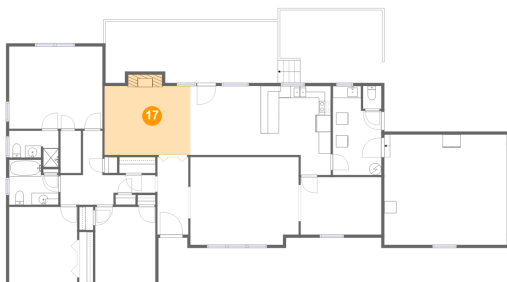
### 16 Floor 1 - Bedroom



Max Dimensions: 11'4" x 12'6"  
Calculated Area: 142 sq. ft  
Included: Yes

Heated: Yes  
Finished: Yes  
Enclosed: Yes  
Contiguous: Yes  
Permitted: Yes  
Wet space: No  
Addition: No  
Conversion: No

### 17 Floor 1 - Family Room

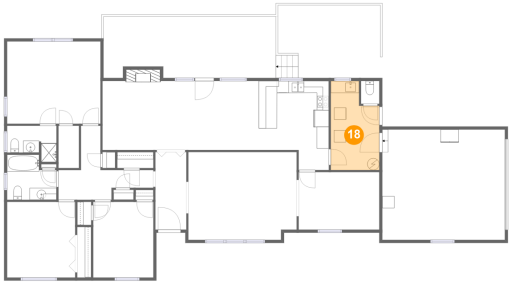


Max Dimensions: 14'3" x 11'5"  
Calculated Area: 175 sq. ft  
Included: Yes

Heated: Yes  
Finished: Yes  
Enclosed: Yes  
Contiguous: Yes  
Permitted: Yes  
Wet space: No  
Addition: No  
Conversion: No

315 Cornell Road, Rocky Mount, Franklin County, Virginia,  
United States, 24151

**18** Floor 1 - Laundry



Max Dimensions: 8'1" x 14'9"  
Calculated Area: 105 sq. ft  
Included: Yes

Heated: Yes  
Finished: Yes  
Enclosed: Yes  
Contiguous: Yes  
Permitted: Yes  
Wet space: No  
Addition: No  
Conversion: No