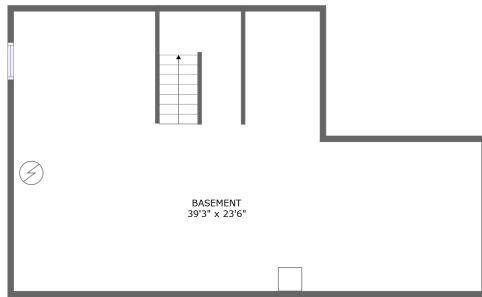
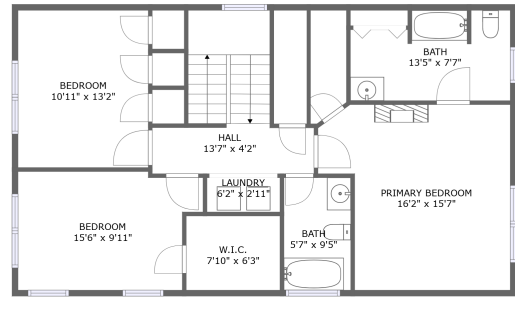
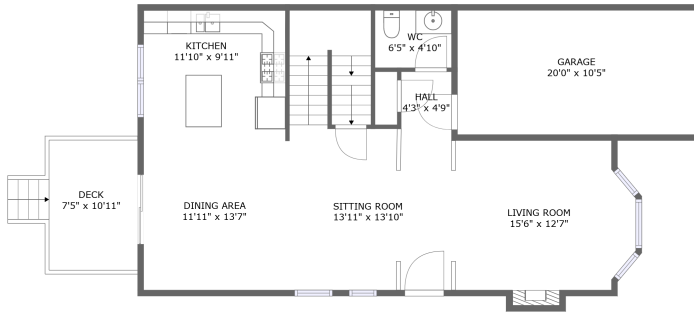



118 Trellis Way, East Stroudsburg, PA, US



Property summary

 **1** Garages

 **3** Bedrooms

 **2** Bathrooms

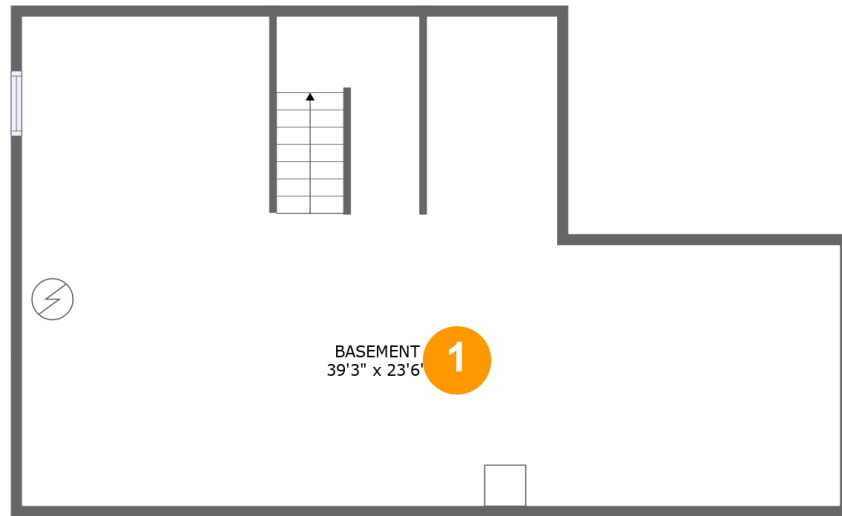
 **1** Half baths

 **3** Floors

 **1,883** Gross living area sqft

 **3,012** Total sqft

118 Trellis Way, East Stroudsburg, PA, US



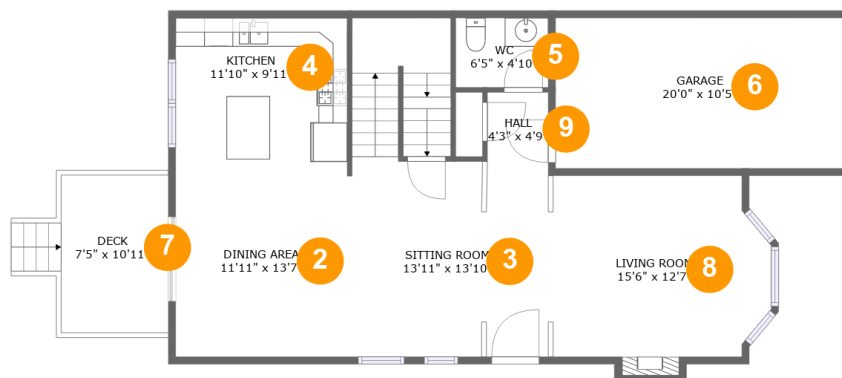
Room dimensions

Floor 1

Total sqft: 821

Living area: 0

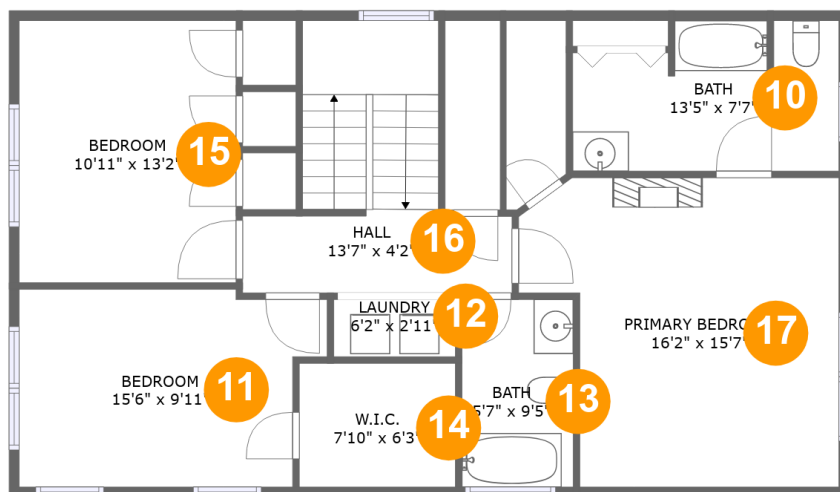
#		Dimensions	sqft	Counted as living area
1	Basement	39'3" x 23'6"	768 sq. ft	No

118 Trellis Way, East Stroudsburg, PA, US**Room dimensions**

Floor 2

Total sqft: 1155 Living area: 847

#		Dimensions	sqft	Counted as living area
2	Dining Room	11'11" x 13'7"	162 sq. ft	Yes
3	Living Room	13'11" x 13'10"	253 sq. ft	Yes
4	Kitchen	11'10" x 9'11"	118 sq. ft	Yes
5	Bath	6'5" x 4'10"	31 sq. ft	Yes
6	Garage	20'0" x 10'5"	208 sq. ft	No
7	Outdoor	7'5" x 10'11"	81 sq. ft	No
8	Living Room	15'6" x 12'7"	188 sq. ft	Yes
9	Hall	4'3" x 4'9"	20 sq. ft	Yes

118 Trellis Way, East Stroudsburg, PA, US**Room dimensions**

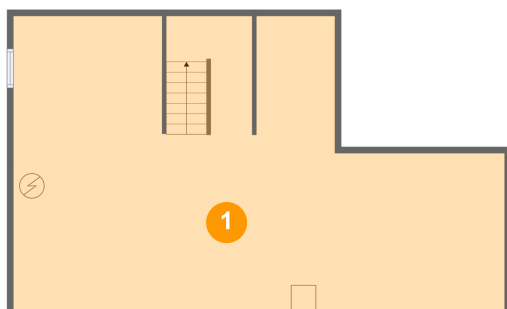
Floor 3

Total sqft: 1036 Living area: 1036

#		Dimensions	sqft	Counted as living area
10	Bath	13'5" x 7'7"	92 sq. ft	Yes
11	Bedroom	15'6" x 9'11"	141 sq. ft	Yes
12	Utility	6'2" x 2'11"	18 sq. ft	Yes
13	Bath	5'7" x 9'5"	53 sq. ft	Yes
14	Cl	7'10" x 6'3"	49 sq. ft	Yes
15	Bedroom	10'11" x 13'2"	144 sq. ft	Yes
16	Hall	13'7" x 4'2"	119 sq. ft	Yes
17	Bedroom	16'2" x 15'7"	219 sq. ft	Yes

118 Trellis Way, East Stroudsburg, PA, US

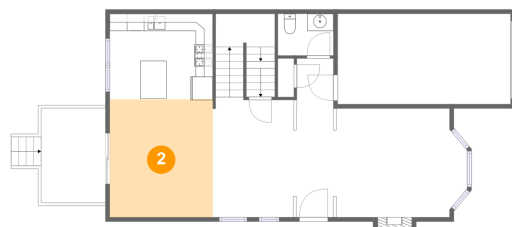
1 Floor 1 - Basement



Dimensions: 39'3" x 23'6"
Area: 768 sq. ft
Counted as living area: No

Heated: Yes
Finished: No
Enclosed: Yes
Contiguous: Yes
Permitted: Yes
Wet space: No
Addition: No
Conversion: No

2 Floor 2 - Dining Room

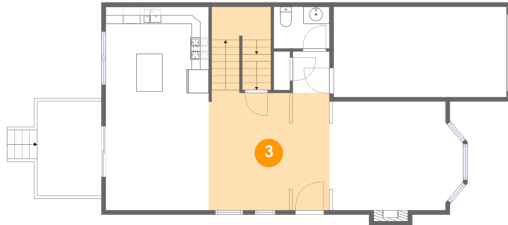


Dimensions: 11'11" x 13'7"
Area: 162 sq. ft
Counted as living area: Yes

Heated: Yes
Finished: Yes
Enclosed: Yes
Contiguous: Yes
Permitted: Yes
Wet space: No
Addition: No
Conversion: No

118 Trellis Way, East Stroudsburg, PA, US

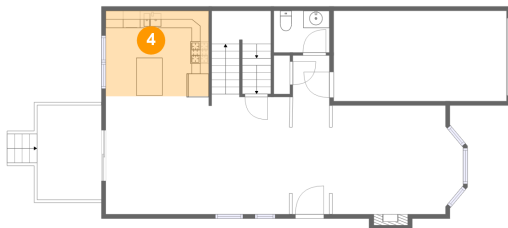
3 Floor 2 - Living Room



Dimensions: 13'11" x 13'10"
Area: 253 sq. ft
Counted as living area: Yes

Heated: Yes
Finished: Yes
Enclosed: Yes
Contiguous: Yes
Permitted: Yes
Wet space: No
Addition: No
Conversion: No

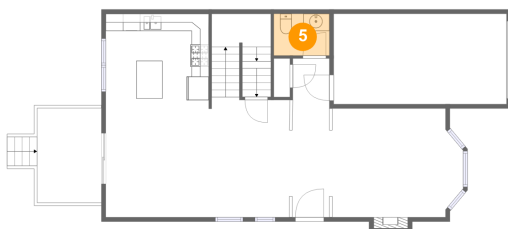
4 Floor 2 - Kitchen



Dimensions: 11'10" x 9'11"
Area: 118 sq. ft
Counted as living area: Yes

Heated: Yes
Finished: Yes
Enclosed: Yes
Contiguous: Yes
Permitted: Yes
Wet space: No
Addition: No
Conversion: No

5 Floor 2 - Bath

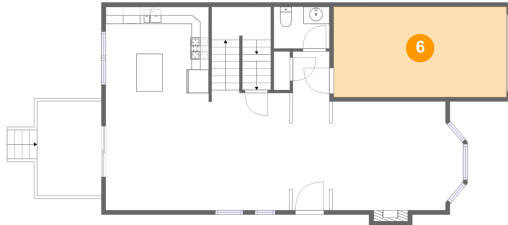


Dimensions: 6'5" x 4'10"
Area: 31 sq. ft
Counted as living area: Yes

Heated: Yes
Finished: Yes
Enclosed: Yes
Contiguous: Yes
Permitted: Yes
Wet space: Yes
Addition: No
Conversion: No

118 Trellis Way, East Stroudsburg, PA, US

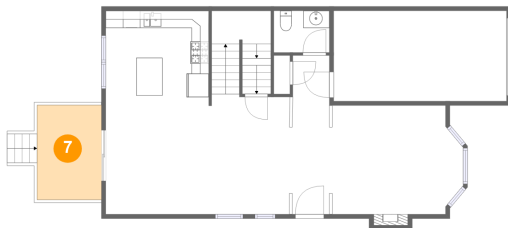
6 Floor 2 - Garage



Dimensions: 20'0" x 10'5"
Area: 208 sq. ft
Counted as living area: No

Heated: No
Finished: No
Enclosed: Yes
Contiguous: Yes
Permitted: Yes
Wet space: No
Addition: No
Conversion: No

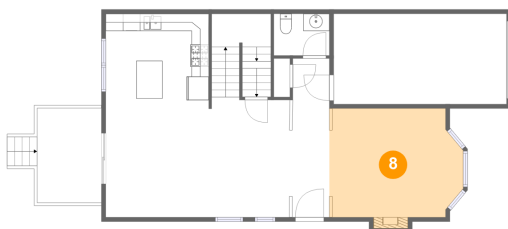
7 Floor 2 - Outdoor



Dimensions: 7'5" x 10'11"
Area: 81 sq. ft
Counted as living area: No

Heated: No
Finished: Yes
Enclosed: No
Contiguous: Yes
Permitted: Yes
Wet space: No
Addition: No
Conversion: No

8 Floor 2 - Living Room

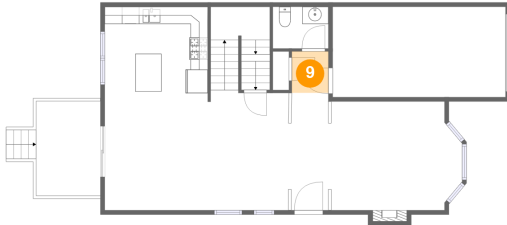


Dimensions: 15'6" x 12'7"
Area: 188 sq. ft
Counted as living area: Yes

Heated: Yes
Finished: Yes
Enclosed: Yes
Contiguous: Yes
Permitted: Yes
Wet space: No
Addition: No
Conversion: No

118 Trellis Way, East Stroudsburg, PA, US

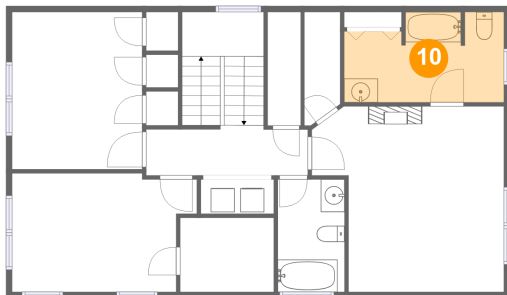
9 Floor 2 - Hall



Dimensions: 4'3" x 4'9"
Area: 20 sq. ft
Counted as living area: Yes

Heated: Yes
Finished: Yes
Enclosed: Yes
Contiguous: Yes
Permitted: Yes
Wet space: No
Addition: No
Conversion: No

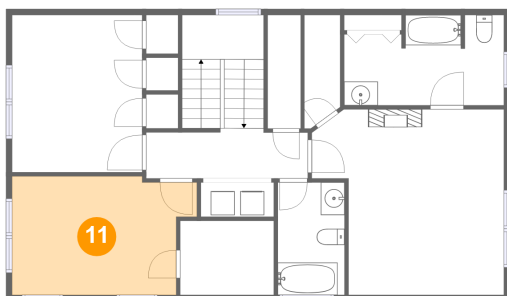
10 Floor 3 - Bath



Dimensions: 13'5" x 7'7"
Area: 92 sq. ft
Counted as living area: Yes

Heated: Yes
Finished: Yes
Enclosed: Yes
Contiguous: Yes
Permitted: Yes
Wet space: Yes
Addition: No
Conversion: No

11 Floor 3 - Bedroom

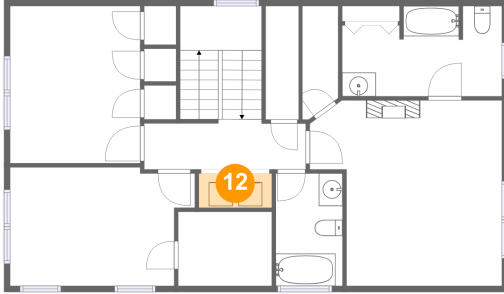


Dimensions: 15'6" x 9'11"
Area: 141 sq. ft
Counted as living area: Yes

Heated: Yes
Finished: Yes
Enclosed: Yes
Contiguous: Yes
Permitted: Yes
Wet space: No
Addition: No
Conversion: No

118 Trellis Way, East Stroudsburg, PA, US

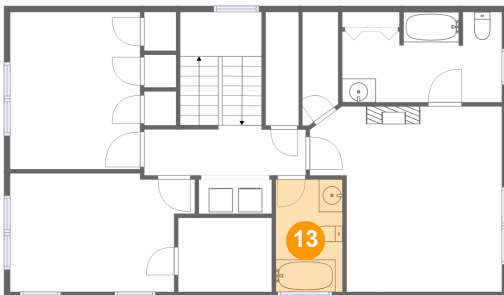
12 Floor 3 - Utility



Dimensions: 6'2" x 2'11"
Area: 18 sq. ft
Counted as living area: Yes

Heated: Yes
Finished: Yes
Enclosed: Yes
Contiguous: Yes
Permitted: Yes
Wet space: No
Addition: No
Conversion: No

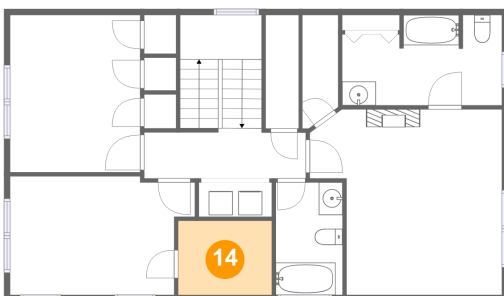
13 Floor 3 - Bath



Dimensions: 5'7" x 9'5"
Area: 53 sq. ft
Counted as living area: Yes

Heated: Yes
Finished: Yes
Enclosed: Yes
Contiguous: Yes
Permitted: Yes
Wet space: Yes
Addition: No
Conversion: No

14 Floor 3 - Cl

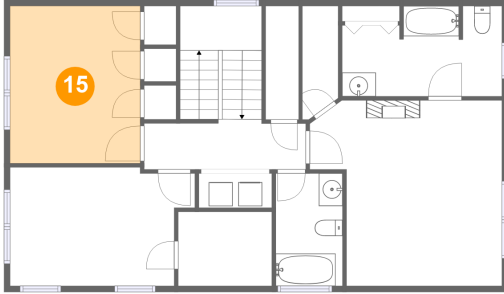


Dimensions: 7'10" x 6'3"
Area: 49 sq. ft
Counted as living area: Yes

Heated: Yes
Finished: Yes
Enclosed: Yes
Contiguous: Yes
Permitted: Yes
Wet space: No
Addition: No
Conversion: No

118 Trellis Way, East Stroudsburg, PA, US

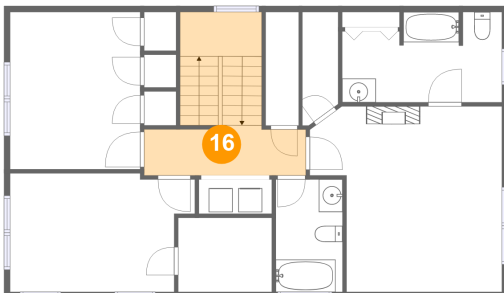
15 Floor 3 - Bedroom



Dimensions: 10'11" x 13'2"
Area: 144 sq. ft
Counted as living area: Yes

Heated: Yes
Finished: Yes
Enclosed: Yes
Contiguous: Yes
Permitted: Yes
Wet space: No
Addition: No
Conversion: No

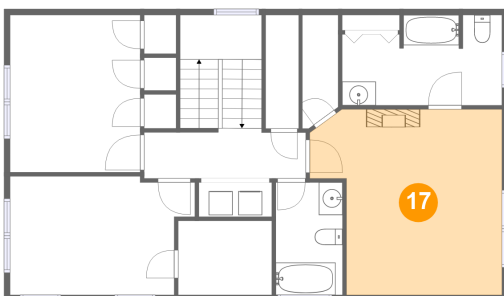
16 Floor 3 - Hall



Dimensions: 13'7" x 4'2"
Area: 119 sq. ft
Counted as living area: Yes

Heated: Yes
Finished: Yes
Enclosed: Yes
Contiguous: Yes
Permitted: Yes
Wet space: No
Addition: No
Conversion: No

17 Floor 3 - Bedroom



Dimensions: 16'2" x 15'7"
Area: 219 sq. ft
Counted as living area: Yes

Heated: Yes
Finished: Yes
Enclosed: Yes
Contiguous: Yes
Permitted: Yes
Wet space: No
Addition: No
Conversion: No