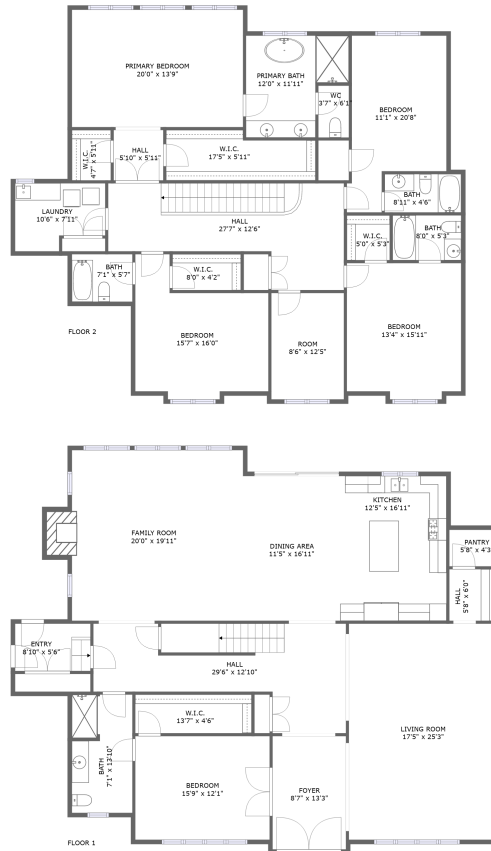


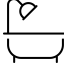



89 Robinson Preserve Crt, Bolton, Peel County, Ontario, Canada, L7E 4L4

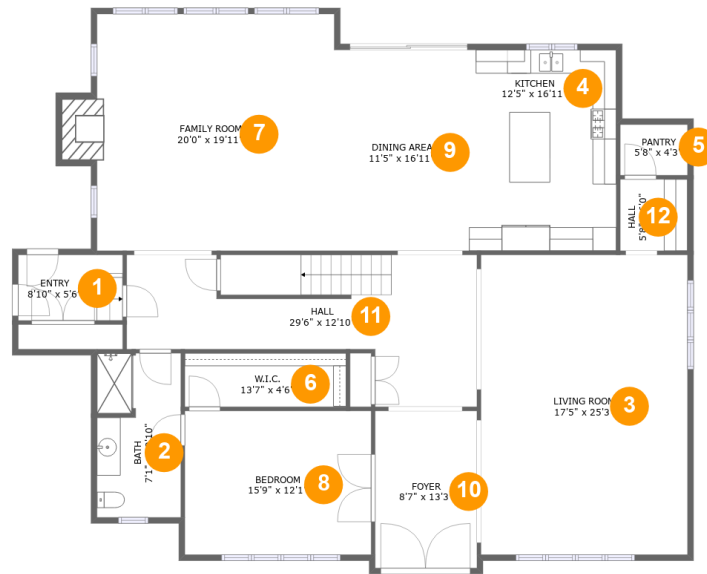


Property Summary

 **0** garages  **5** bedrooms  **5** bathrooms  **0** half baths

 **2** floors  **4,310** Gross Living Area sqft  **4,322** total sqft

89 Robinson Preserve Crt, Bolton, Peel County, Ontario, Canada, L7E 4L4



Room Dimensions

Floor 1

Total sqft: 2302

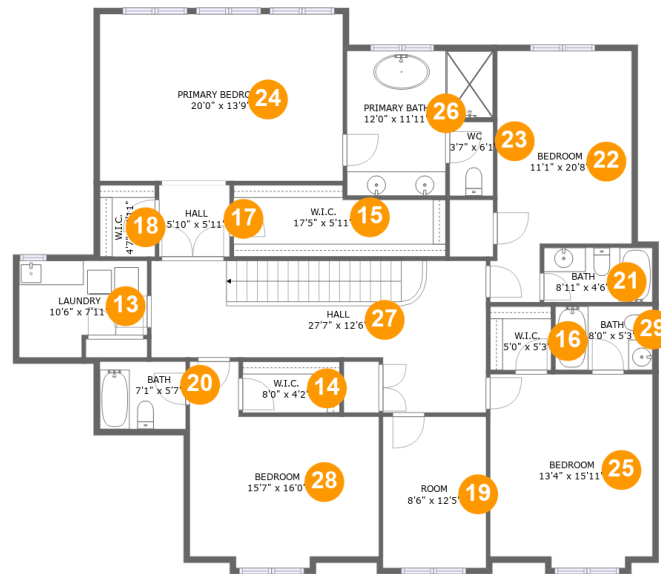
Living area: 2290

#	Room name	Dimensions	Area (sqft)	Counted as Living Area
1	Entry	8'10" x 5'6"	49 sq. ft	Yes
2	Bath	7'1" x 13'10"	97 sq. ft	Yes
3	Living Room	17'5" x 25'3"	440 sq. ft	Yes
4	Kitchen	12'5" x 16'11"	210 sq. ft	Yes
5	Pantry	5'8" x 4'3"	24 sq. ft	Yes
6	W.i.c.	13'7" x 4'6"	61 sq. ft	Yes
7	Family Room	20'0" x 19'11"	415 sq. ft	Yes
8	Bedroom	15'9" x 12'1"	190 sq. ft	Yes
9	Dining Area	11'5" x 16'11"	193 sq. ft	Yes
10	Foyer	8'7" x 13'3"	114 sq. ft	Yes
11	Hall	29'6" x 12'10"	272 sq. ft	Yes

**89 Robinson Preserve Crt, Bolton, Peel County,
Ontario, Canada, L7E 4L4**

#	Room name	Dimensions	Area (sqft)	Counted as Living Area
12	Hall	5'8" x 6'0"	34 sq. ft	Yes

89 Robinson Preserve Crt, Bolton, Peel County, Ontario, Canada, L7E 4L4



Room Dimensions

Floor 2

Total sqft: 2020

Living area: 2020

#	Room name	Dimensions	Area (sqft)	Counted as Living Area
13	Laundry	10'6" x 7'11"	74 sq. ft	Yes
14	W.i.c.	8'0" x 4'2"	34 sq. ft	Yes
15	W.i.c.	17'5" x 5'11"	93 sq. ft	Yes
16	W.i.c.	5'0" x 5'3"	26 sq. ft	Yes
17	Hall	5'10" x 5'11"	34 sq. ft	Yes
18	W.i.c.	4'7" x 5'11"	27 sq. ft	Yes
19	Room	8'6" x 12'5"	106 sq. ft	Yes
20	Bath	7'1" x 5'7"	39 sq. ft	Yes
21	Bath	8'11" x 4'6"	40 sq. ft	Yes
22	Bedroom	11'1" x 20'8"	194 sq. ft	Yes
23	Wc	3'7" x 6'1"	22 sq. ft	Yes

Scan captured on Fri, 05 Jul 2024 23:22:25 GMT

Information is calculated by CubiCasa technology; deemed highly reliable but not guaranteed.

**89 Robinson Preserve Crt, Bolton, Peel County,
Ontario, Canada, L7E 4L4**

#	Room name	Dimensions	Area (sqft)	Counted as Living Area
24	Primary Bedroom	20'0" x 13'9"	275 sq. ft	Yes
25	Bedroom	13'4" x 15'11"	206 sq. ft	Yes
26	Primary Bath	12'0" x 11'11"	118 sq. ft	Yes
27	Hall	27'7" x 12'6"	258 sq. ft	Yes
28	Bedroom	15'7" x 16'0"	203 sq. ft	Yes
29	Bath	8'0" x 5'3"	42 sq. ft	Yes

89 Robinson Preserve Crt, Bolton, Peel County, Ontario, Canada, L7E 4L4

1 Floor 1 - Entry



Dimensions: 8'10" x 5'6"
Area: 49 sq. ft
Counted as Living Area:
Yes

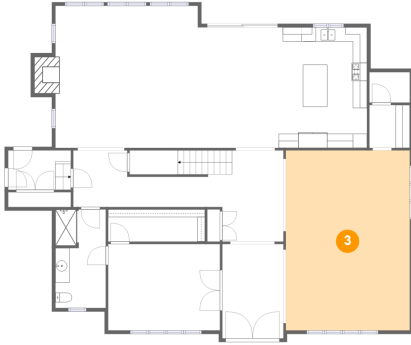
Heated: Yes
Finished: Yes
Enclosed: Yes
Contiguous:
Yes
Permitted: Yes
Wet Space: No
Addition: No
Conversion: No

2 Floor 1 - Bath



Dimensions: 7'1" x 13'10"
Area: 97 sq. ft
Counted as Living Area:
Yes

Heated: Yes
Finished: Yes
Enclosed: Yes
Contiguous:
Yes
Permitted: Yes
Wet Space: Yes
Addition: No
Conversion: No

**89 Robinson Preserve Crt, Bolton, Peel County,
Ontario, Canada, L7E 4L4****3 Floor 1 - Living Room**

Dimensions: 17'5" x 25'3"
Area: 440 sq. ft
Counted as Living Area:
Yes

Heated: Yes
Finished: Yes
Enclosed: Yes
Contiguous:
Yes
Permitted: Yes
Wet Space: No
Addition: No
Conversion: No

4 Floor 1 - Kitchen

Dimensions: 12'5" x 16'11"
Area: 210 sq. ft
Counted as Living Area:
Yes

Heated: Yes
Finished: Yes
Enclosed: Yes
Contiguous:
Yes
Permitted: Yes
Wet Space: No
Addition: No
Conversion: No

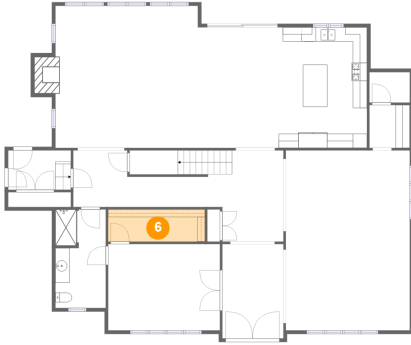
5 Floor 1 - Pantry

Dimensions: 5'8" x 4'3"
Area: 24 sq. ft
Counted as Living Area:
Yes

Heated: Yes
Finished: Yes
Enclosed: Yes
Contiguous:
Yes
Permitted: Yes
Wet Space: No
Addition: No
Conversion: No

89 Robinson Preserve Crt, Bolton, Peel County, Ontario, Canada, L7E 4L4

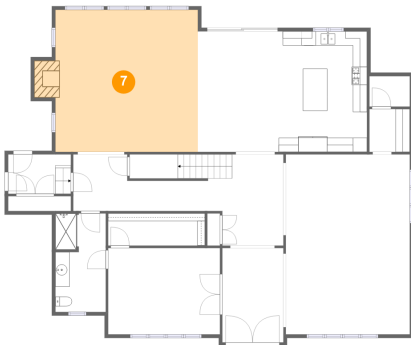
6 Floor 1 - W.i.c.



Dimensions: 13'7" x 4'6"
Area: 61 sq. ft
Counted as Living Area:
Yes

Heated: Yes
Finished: Yes
Enclosed: Yes
Contiguous:
Yes
Permitted: Yes
Wet Space: No
Addition: No
Conversion: No

7 Floor 1 - Family Room



Dimensions: 20'0" x 19'11"
Area: 415 sq. ft
Counted as Living Area:
Yes

Heated: Yes
Finished: Yes
Enclosed: Yes
Contiguous:
Yes
Permitted: Yes
Wet Space: No
Addition: No
Conversion: No

8 Floor 1 - Bedroom



Dimensions: 15'9" x 12'1"
Area: 190 sq. ft
Counted as Living Area:
Yes

Heated: Yes
Finished: Yes
Enclosed: Yes
Contiguous:
Yes
Permitted: Yes
Wet Space: No
Addition: No
Conversion: No

89 Robinson Preserve Crt, Bolton, Peel County, Ontario, Canada, L7E 4L4

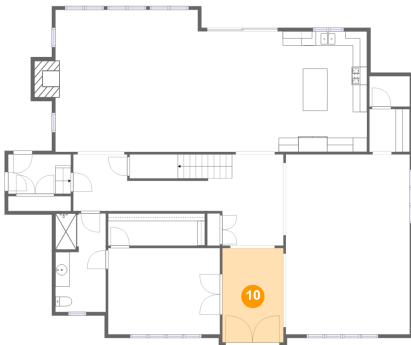
9 Floor 1 - Dining Area



Dimensions: 11'5" x 16'11"
Area: 193 sq. ft
Counted as Living Area:
Yes

Heated: Yes
Finished: Yes
Enclosed: Yes
Contiguous:
Yes
Permitted: Yes
Wet Space: No
Addition: No
Conversion: No

10 Floor 1 - Foyer



Dimensions: 8'7" x 13'3"
Area: 114 sq. ft
Counted as Living Area:
Yes

Heated: Yes
Finished: Yes
Enclosed: Yes
Contiguous:
Yes
Permitted: Yes
Wet Space: No
Addition: No
Conversion: No

11 Floor 1 - Hall



Dimensions: 29'6" x 12'10"
Area: 272 sq. ft
Counted as Living Area:
Yes

Heated: Yes
Finished: Yes
Enclosed: Yes
Contiguous:
Yes
Permitted: Yes
Wet Space: No
Addition: No
Conversion: No

89 Robinson Preserve Crt, Bolton, Peel County, Ontario, Canada, L7E 4L4

12 Floor 1 - Hall



Dimensions: 5'8" x 6'0"
Area: 34 sq. ft
Counted as Living Area:
Yes

Heated: Yes
Finished: Yes
Enclosed: Yes
Contiguous:
Yes
Permitted: Yes
Wet Space: No
Addition: No
Conversion: No

13 Floor 2 - Laundry



Dimensions: 10'6" x 7'11"
Area: 74 sq. ft
Counted as Living Area:
Yes

Heated: Yes
Finished: Yes
Enclosed: Yes
Contiguous:
Yes
Permitted: Yes
Wet Space: No
Addition: No
Conversion: No

14 Floor 2 - W.i.c.

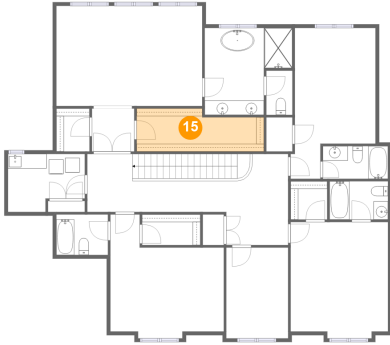


Dimensions: 8'0" x 4'2"
Area: 34 sq. ft
Counted as Living Area:
Yes

Heated: Yes
Finished: Yes
Enclosed: Yes
Contiguous:
Yes
Permitted: Yes
Wet Space: No
Addition: No
Conversion: No

89 Robinson Preserve Crt, Bolton, Peel County, Ontario, Canada, L7E 4L4

15 Floor 2 - W.i.c.



Dimensions: 17'5" x 5'11"
Area: 93 sq. ft
Counted as Living Area:
Yes

Heated: Yes
Finished: Yes
Enclosed: Yes
Contiguous:
Yes
Permitted: Yes
Wet Space: No
Addition: No
Conversion: No

16 Floor 2 - W.i.c.



Dimensions: 5'0" x 5'3"
Area: 26 sq. ft
Counted as Living Area:
Yes

Heated: Yes
Finished: Yes
Enclosed: Yes
Contiguous:
Yes
Permitted: Yes
Wet Space: No
Addition: No
Conversion: No

17 Floor 2 - Hall



Dimensions: 5'10" x 5'11"
Area: 34 sq. ft
Counted as Living Area:
Yes

Heated: Yes
Finished: Yes
Enclosed: Yes
Contiguous:
Yes
Permitted: Yes
Wet Space: No
Addition: No
Conversion: No

89 Robinson Preserve Crt, Bolton, Peel County, Ontario, Canada, L7E 4L4

18 Floor 2 - W.i.c.



Dimensions: 4'7" x 5'11"
Area: 27 sq. ft
Counted as Living Area:
Yes

Heated: Yes
Finished: Yes
Enclosed: Yes
Contiguous:
Yes
Permitted: Yes
Wet Space: No
Addition: No
Conversion: No

19 Floor 2 - Room



Dimensions: 8'6" x 12'5"
Area: 106 sq. ft
Counted as Living Area:
Yes

Heated: Yes
Finished: Yes
Enclosed: Yes
Contiguous:
Yes
Permitted: Yes
Wet Space: No
Addition: No
Conversion: No

20 Floor 2 - Bath



Dimensions: 7'1" x 5'7"
Area: 39 sq. ft
Counted as Living Area:
Yes

Heated: Yes
Finished: Yes
Enclosed: Yes
Contiguous:
Yes
Permitted: Yes
Wet Space: Yes
Addition: No
Conversion: No

89 Robinson Preserve Crt, Bolton, Peel County, Ontario, Canada, L7E 4L4

21 Floor 2 - Bath



Dimensions: 8'11" x 4'6"
Area: 40 sq. ft
Counted as Living Area:
Yes

Heated: Yes
Finished: Yes
Enclosed: Yes
Contiguous:
Yes
Permitted: Yes
Wet Space: Yes
Addition: No
Conversion: No

22 Floor 2 - Bedroom



Dimensions: 11'1" x 20'8"
Area: 194 sq. ft
Counted as Living Area:
Yes

Heated: Yes
Finished: Yes
Enclosed: Yes
Contiguous:
Yes
Permitted: Yes
Wet Space: No
Addition: No
Conversion: No

23 Floor 2 - Wc

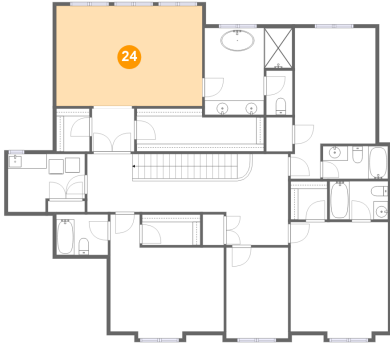


Dimensions: 3'7" x 6'1"
Area: 22 sq. ft
Counted as Living Area:
Yes

Heated: Yes
Finished: Yes
Enclosed: Yes
Contiguous:
Yes
Permitted: Yes
Wet Space: Yes
Addition: No
Conversion: No

89 Robinson Preserve Crt, Bolton, Peel County, Ontario, Canada, L7E 4L4

24 Floor 2 - Primary Bedroom



Dimensions: 20'0" x 13'9"
Area: 275 sq. ft
Counted as Living Area:
Yes

Heated: Yes
Finished: Yes
Enclosed: Yes
Contiguous:
Yes
Permitted: Yes
Wet Space: No
Addition: No
Conversion: No

25 Floor 2 - Bedroom



Dimensions: 13'4" x 15'11"
Area: 206 sq. ft
Counted as Living Area:
Yes

Heated: Yes
Finished: Yes
Enclosed: Yes
Contiguous:
Yes
Permitted: Yes
Wet Space: No
Addition: No
Conversion: No

26 Floor 2 - Primary Bath

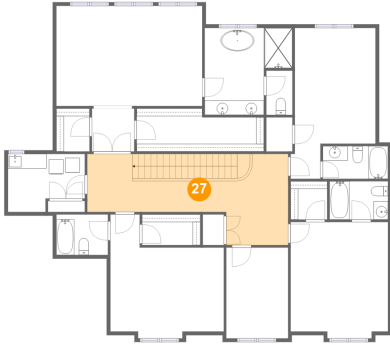


Dimensions: 12'0" x 11'11"
Area: 118 sq. ft
Counted as Living Area:
Yes

Heated: Yes
Finished: Yes
Enclosed: Yes
Contiguous:
Yes
Permitted: Yes
Wet Space: Yes
Addition: No
Conversion: No

89 Robinson Preserve Crt, Bolton, Peel County, Ontario, Canada, L7E 4L4

27 Floor 2 - Hall



Dimensions: 27'7" x 12'6"
Area: 258 sq. ft
Counted as Living Area:
Yes

Heated: Yes
Finished: Yes
Enclosed: Yes
Contiguous:
Yes
Permitted: Yes
Wet Space: No
Addition: No
Conversion: No

28 Floor 2 - Bedroom



Dimensions: 15'7" x 16'0"
Area: 203 sq. ft
Counted as Living Area:
Yes

Heated: Yes
Finished: Yes
Enclosed: Yes
Contiguous:
Yes
Permitted: Yes
Wet Space: No
Addition: No
Conversion: No

29 Floor 2 - Bath



Dimensions: 8'0" x 5'3"
Area: 42 sq. ft
Counted as Living Area:
Yes

Heated: Yes
Finished: Yes
Enclosed: Yes
Contiguous:
Yes
Permitted: Yes
Wet Space: Yes
Addition: No
Conversion: No