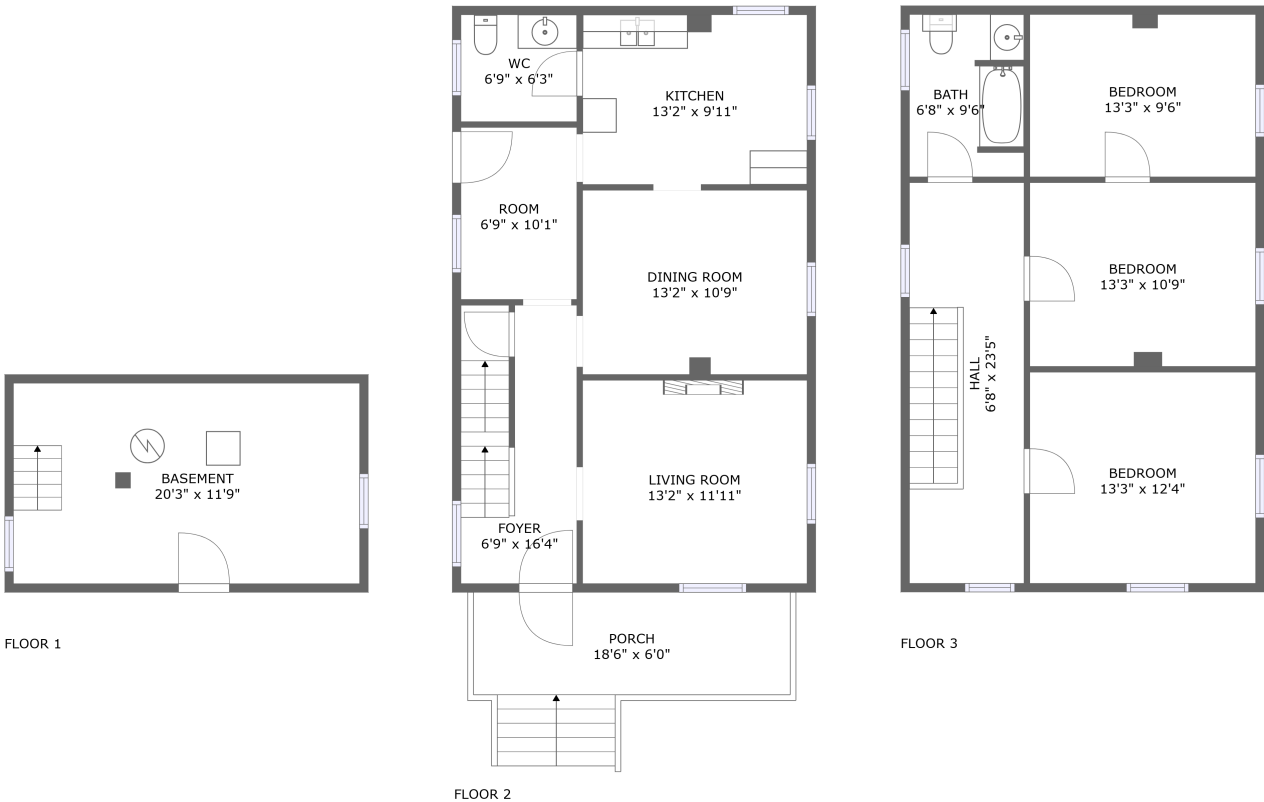


Home report

513 Highland Avenue Southeast, Roanoke, Virginia 24013,
United States




Total GLA: 1458 sq. ft

Below Ground: 0 sq. ft, Floor 2: 729 sq. ft, Floor 3: 729 sq. ft

Excluded: Basement 271 sq. ft, Porch 140 sq. ft

Property summary

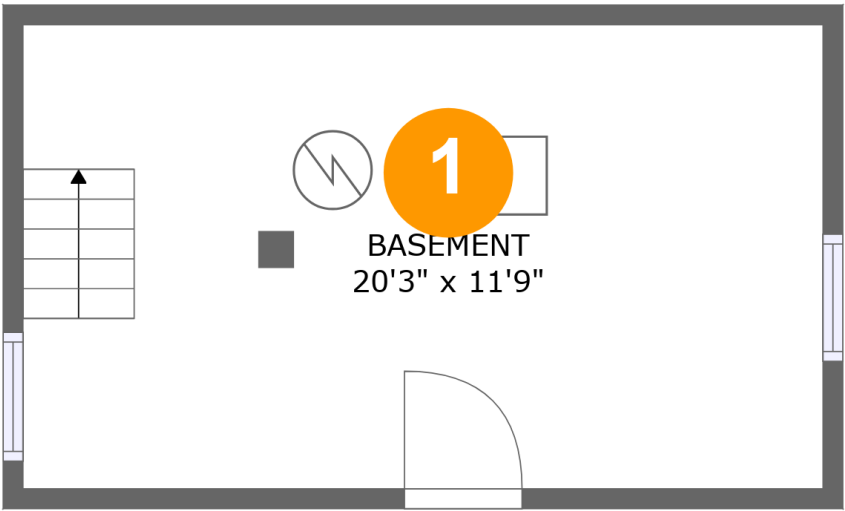
 **3** Floors

 **3** Bedrooms

 **1** Bathrooms

 **1** Half baths

513 Highland Avenue Southeast, Roanoke, Virginia 24013,
United States



Room dimensions

Floor 1 Below ground Total:0sqft Excluded: 271sqft

#		Max Dimensions	sqft	Included
1	Basement	20'3" x 11'9"	238 sq. ft	No

Home report

513 Highland Avenue Southeast, Roanoke, Virginia 24013,
United States



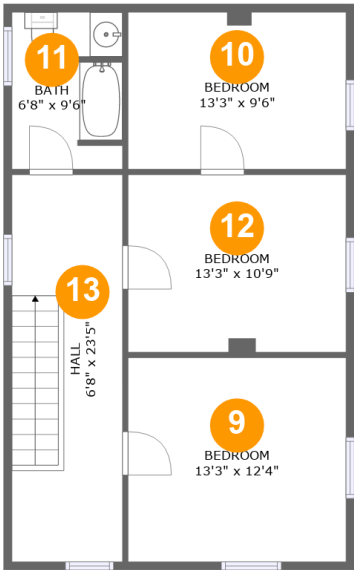
Room dimensions

Floor 2 Total:729sqft Excluded: 140sqft

#		Max Dimensions	sqft	Included
2	Living Room	13'2" x 11'11"	156 sq. ft	Yes
3	Dining Room	13'2" x 10'9"	142 sq. ft	Yes
4	Porch	18'6" x 6'0"	140 sq. ft	No
5	WC	6'9" x 6'3"	42 sq. ft	Yes
6	Foyer	6'9" x 16'4"	108 sq. ft	Yes
7	Room	6'9" x 10'1"	68 sq. ft	Yes
8	Kitchen	13'2" x 9'11"	131 sq. ft	Yes

Home report

513 Highland Avenue Southeast, Roanoke, Virginia 24013,
United States



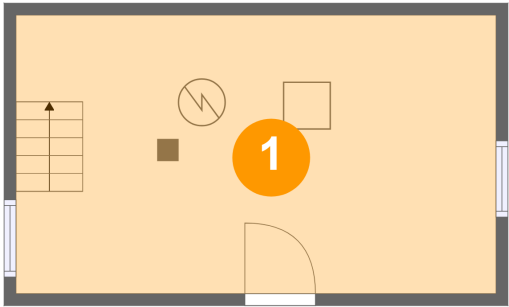
Room dimensions

Floor 3 Total:729sqft Excluded: 0sqft

#		Max Dimensions	sqft	Included
9	Bedroom	13'3" x 12'4"	163 sq. ft	Yes
10	Bedroom	13'3" x 9'6"	126 sq. ft	Yes
11	Bath	6'8" x 9'6"	62 sq. ft	Yes
12	Bedroom	13'3" x 10'9"	142 sq. ft	Yes
13	Hall	6'8" x 23'5"	157 sq. ft	Yes

513 Highland Avenue Southeast, Roanoke, Virginia 24013,
United States

1 Floor 1 - Basement



Max Dimensions: 20'3" x 11'9"
Calculated Area: 238 sq. ft
Included: No

Heated: Yes
Finished: No
Enclosed: Yes
Contiguous: Yes
Permitted: Yes
Wet space: No
Addition: No
Conversion: No

2 Floor 2 - Living Room



Max Dimensions: 13'2" x 11'11"
Calculated Area: 156 sq. ft
Included: Yes

Heated: Yes
Finished: Yes
Enclosed: Yes
Contiguous: Yes
Permitted: Yes
Wet space: No
Addition: No
Conversion: No

513 Highland Avenue Southeast, Roanoke, Virginia 24013,
United States

3 Floor 2 - Dining Room



Max Dimensions: 13'2" x 10'9"
Calculated Area: 142 sq. ft
Included: Yes

Heated: Yes
Finished: Yes
Enclosed: Yes
Contiguous: Yes
Permitted: Yes
Wet space: No
Addition: No
Conversion: No

4 Floor 2 - Porch



Max Dimensions: 18'6" x 6'0"
Calculated Area: 140 sq. ft
Included: No

Heated: No
Finished: Yes
Enclosed: No
Contiguous: Yes
Permitted: Yes
Wet space: No
Addition: No
Conversion: No

5 Floor 2 - WC



Max Dimensions: 6'9" x 6'3"
Calculated Area: 42 sq. ft
Included: Yes

Heated: Yes
Finished: Yes
Enclosed: Yes
Contiguous: Yes
Permitted: Yes
Wet space: Yes
Addition: No
Conversion: No

513 Highland Avenue Southeast, Roanoke, Virginia 24013,
United States

6 Floor 2 - Foyer



Max Dimensions: 6'9" x 16'4"
Calculated Area: 108 sq. ft
Included: Yes

Heated: Yes
Finished: Yes
Enclosed: Yes
Contiguous: Yes
Permitted: Yes
Wet space: No
Addition: No
Conversion: No

7 Floor 2 - Room



Max Dimensions: 6'9" x 10'1"
Calculated Area: 68 sq. ft
Included: Yes

Heated: Yes
Finished: Yes
Enclosed: Yes
Contiguous: Yes
Permitted: Yes
Wet space: No
Addition: No
Conversion: No

8 Floor 2 - Kitchen

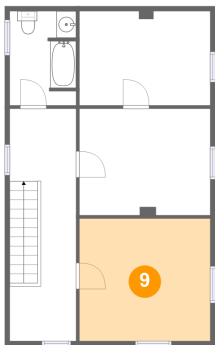


Max Dimensions: 13'2" x 9'11"
Calculated Area: 131 sq. ft
Included: Yes

Heated: Yes
Finished: Yes
Enclosed: Yes
Contiguous: Yes
Permitted: Yes
Wet space: No
Addition: No
Conversion: No

513 Highland Avenue Southeast, Roanoke, Virginia 24013,
United States

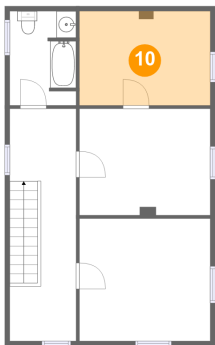
9 Floor 3 - Bedroom



Max Dimensions: 13'3" x 12'4"
Calculated Area: 163 sq. ft
Included: Yes

Heated: Yes
Finished: Yes
Enclosed: Yes
Contiguous: Yes
Permitted: Yes
Wet space: No
Addition: No
Conversion: No

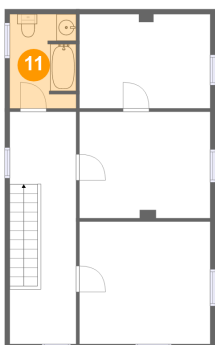
10 Floor 3 - Bedroom



Max Dimensions: 13'3" x 9'6"
Calculated Area: 126 sq. ft
Included: Yes

Heated: Yes
Finished: Yes
Enclosed: Yes
Contiguous: Yes
Permitted: Yes
Wet space: No
Addition: No
Conversion: No

11 Floor 3 - Bath



Max Dimensions: 6'8" x 9'6"
Calculated Area: 62 sq. ft
Included: Yes

Heated: Yes
Finished: Yes
Enclosed: Yes
Contiguous: Yes
Permitted: Yes
Wet space: Yes
Addition: No
Conversion: No

513 Highland Avenue Southeast, Roanoke, Virginia 24013,
United States

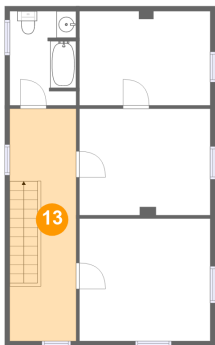
12 Floor 3 - Bedroom



Max Dimensions: 13'3" x 10'9"
Calculated Area: 142 sq. ft
Included: Yes

Heated: Yes
Finished: Yes
Enclosed: Yes
Contiguous: Yes
Permitted: Yes
Wet space: No
Addition: No
Conversion: No

13 Floor 3 - Hall



Max Dimensions: 6'8" x 23'5"
Calculated Area: 157 sq. ft
Included: Yes

Heated: Yes
Finished: Yes
Enclosed: Yes
Contiguous: Yes
Permitted: Yes
Wet space: No
Addition: No
Conversion: No