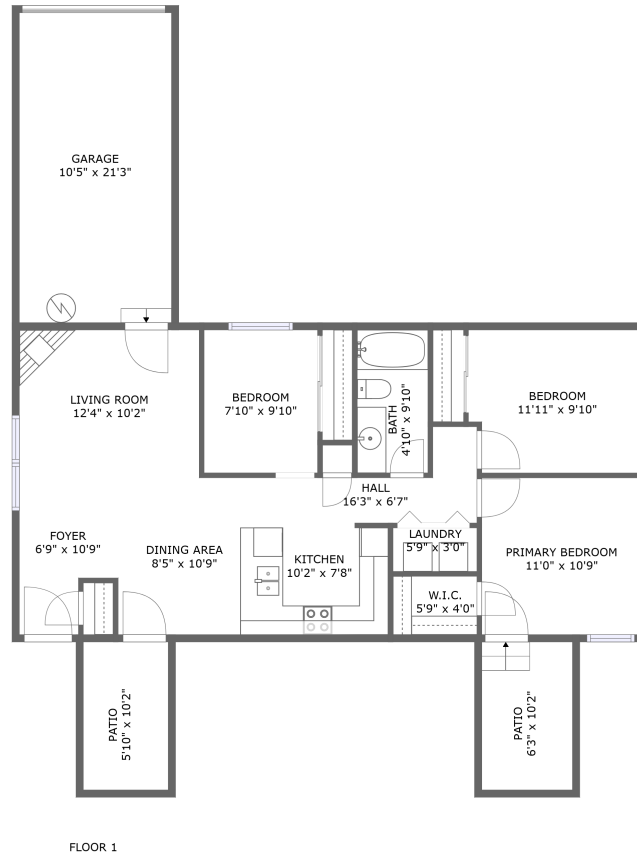


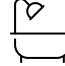
8541 Northeast Russell Street, Madison South, Portland, Multnomah County, Oregon, United




Property Summary


 **1** garages

 **3** bedrooms

 **1** bathrooms

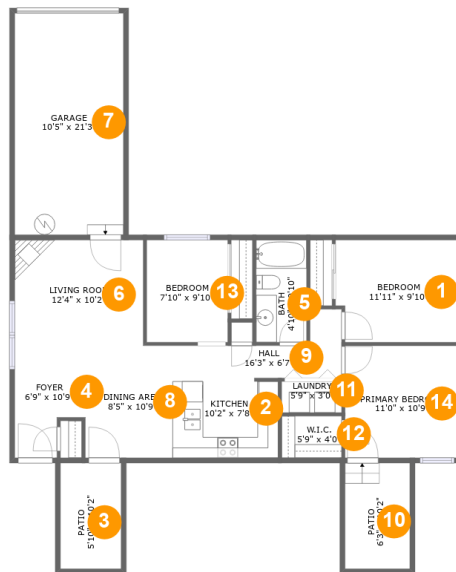
 **0** half baths

 **1** floors

 **898** Gross Living Area sqft

 **1,243** total sqft

8541 Northeast Russell Street, Madison South, Portland, Multnomah County, Oregon, United



Room Dimensions

Floor 1

Total sqft: 1243

Living area: 898

#	Room name	Dimensions	Area (sqft)	Counted as Living Area
1	Bedroom	11'11" x 9'10"	114 sq. ft	Yes
2	Kitchen	10'2" x 7'8"	77 sq. ft	Yes
3	Patio	5'10" x 10'2"	59 sq. ft	No
4	Foyer	6'9" x 10'9"	63 sq. ft	Yes
5	Bath	4'10" x 9'10"	48 sq. ft	Yes
6	Living Room	12'4" x 10'2"	126 sq. ft	Yes
7	Garage	10'5" x 21'3"	223 sq. ft	No
8	Dining Area	8'5" x 10'9"	91 sq. ft	Yes
9	Hall	16'3" x 6'7"	61 sq. ft	Yes
10	Patio	6'3" x 10'2"	63 sq. ft	No
11	Laundry	5'9" x 3'0"	17 sq. ft	Yes

Scan captured on Sat, 21 Sep 2024 17:59:22 GMT

Information is calculated by CubiCasa technology; deemed highly reliable but not guaranteed.

**8541 Northeast Russell Street, Madison South,
Portland, Multnomah County, Oregon, United**

#	Room name	Dimensions	Area (sqft)	Counted as Living Area
12	W.i.c.	5'9" x 4'0"	23 sq. ft	Yes
13	Bedroom	7'10" x 9'10"	77 sq. ft	Yes
14	Primary Bedroom	11'0" x 10'9"	118 sq. ft	Yes

8541 Northeast Russell Street, Madison South, Portland, Multnomah County, Oregon, United

1 Floor 1 - Bedroom



Dimensions: 11'11" x 9'10"
Area: 114 sq. ft
Counted as Living Area:
Yes

Heated: Yes
Finished: Yes
Enclosed: Yes
Contiguous:
Yes
Permitted: Yes
Wet Space: No
Addition: No
Conversion: No

2 Floor 1 - Kitchen



Dimensions: 10'2" x 7'8"
Area: 77 sq. ft
Counted as Living Area:
Yes

Heated: Yes
Finished: Yes
Enclosed: Yes
Contiguous:
Yes
Permitted: Yes
Wet Space: No
Addition: No
Conversion: No

8541 Northeast Russell Street, Madison South, Portland, Multnomah County, Oregon, United

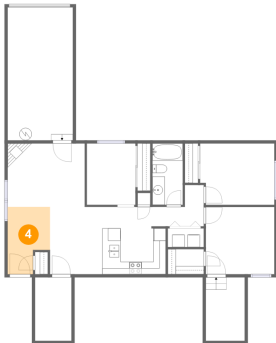
3 Floor 1 - Patio



Dimensions: 5'10" x 10'2"
Area: 59 sq. ft
Counted as Living Area: No

Heated: No
Finished: Yes
Enclosed: No
Contiguous: Yes
Permitted: Yes
Wet Space: No
Addition: No
Conversion: No

4 Floor 1 - Foyer



Dimensions: 6'9" x 10'9"
Area: 63 sq. ft
Counted as Living Area:
Yes

Heated: Yes
Finished: Yes
Enclosed: Yes
Contiguous:
Yes
Permitted: Yes
Wet Space: No
Addition: No
Conversion: No

5 Floor 1 - Bath



Dimensions: 4'10" x 9'10"
Area: 48 sq. ft
Counted as Living Area:
Yes

Heated: Yes
Finished: Yes
Enclosed: Yes
Contiguous:
Yes
Permitted: Yes
Wet Space: Yes
Addition: No
Conversion: No

8541 Northeast Russell Street, Madison South, Portland, Multnomah County, Oregon, United

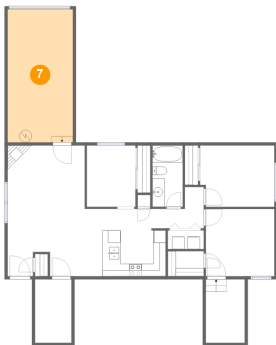
6 Floor 1 - Living Room



Dimensions: 12'4" x 10'2"
Area: 126 sq. ft
Counted as Living Area:
Yes

Heated: Yes
Finished: Yes
Enclosed: Yes
Contiguous:
Yes
Permitted: Yes
Wet Space: No
Addition: No
Conversion: No

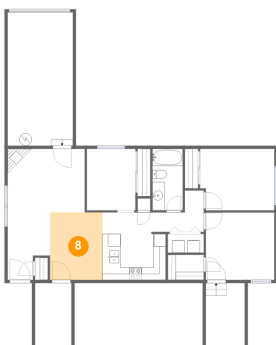
7 Floor 1 - Garage



Dimensions: 10'5" x 21'3"
Area: 223 sq. ft
Counted as Living Area: No

Heated: No
Finished: No
Enclosed: Yes
Contiguous: Yes
Permitted: Yes
Wet Space: No
Addition: No
Conversion: No

8 Floor 1 - Dining Area

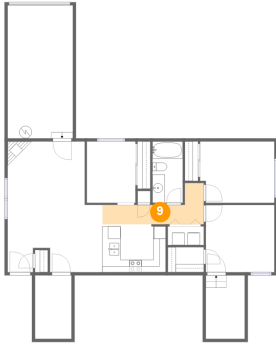


Dimensions: 8'5" x 10'9"
Area: 91 sq. ft
Counted as Living Area:
Yes

Heated: Yes
Finished: Yes
Enclosed: Yes
Contiguous:
Yes
Permitted: Yes
Wet Space: No
Addition: No
Conversion: No

8541 Northeast Russell Street, Madison South, Portland, Multnomah County, Oregon, United

9 Floor 1 - Hall



Dimensions: 16'3" x 6'7"
Area: 61 sq. ft
Counted as Living Area:
Yes

Heated: Yes
Finished: Yes
Enclosed: Yes
Contiguous:
Yes
Permitted: Yes
Wet Space: No
Addition: No
Conversion: No

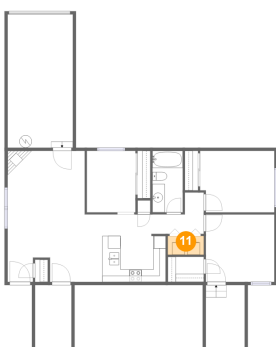
10 Floor 1 - Patio



Dimensions: 6'3" x 10'2"
Area: 63 sq. ft
Counted as Living Area: No

Heated: No
Finished: Yes
Enclosed: No
Contiguous: Yes
Permitted: Yes
Wet Space: No
Addition: No
Conversion: No

11 Floor 1 - Laundry



Dimensions: 5'9" x 3'0"
Area: 17 sq. ft
Counted as Living Area:
Yes

Heated: Yes
Finished: Yes
Enclosed: Yes
Contiguous:
Yes
Permitted: Yes
Wet Space: No
Addition: No
Conversion: No

8541 Northeast Russell Street, Madison South, Portland, Multnomah County, Oregon, United

12 Floor 1 - W.i.c.



Dimensions: 5'9" x 4'0"
Area: 23 sq. ft
Counted as Living Area:
Yes

Heated: Yes
Finished: Yes
Enclosed: Yes
Contiguous:
Yes
Permitted: Yes
Wet Space: No
Addition: No
Conversion: No

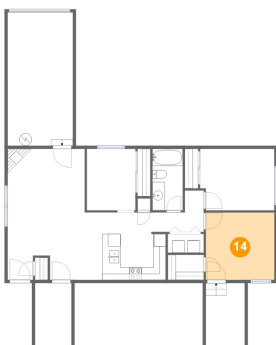
13 Floor 1 - Bedroom



Dimensions: 7'10" x 9'10"
Area: 77 sq. ft
Counted as Living Area:
Yes

Heated: Yes
Finished: Yes
Enclosed: Yes
Contiguous:
Yes
Permitted: Yes
Wet Space: No
Addition: No
Conversion: No

14 Floor 1 - Primary Bedroom



Dimensions: 11'0" x 10'9"
Area: 118 sq. ft
Counted as Living Area:
Yes

Heated: Yes
Finished: Yes
Enclosed: Yes
Contiguous:
Yes
Permitted: Yes
Wet Space: No
Addition: No
Conversion: No