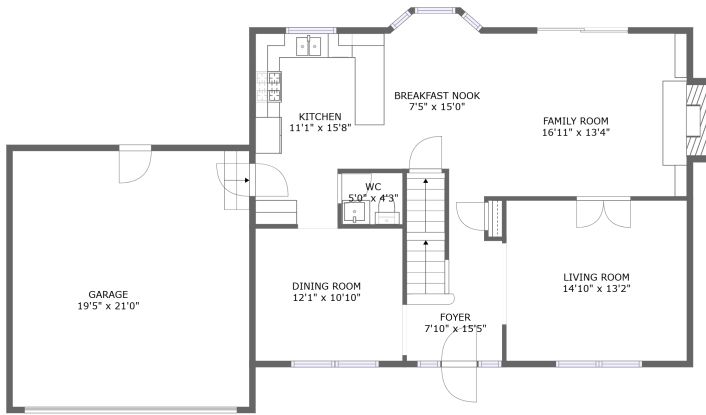
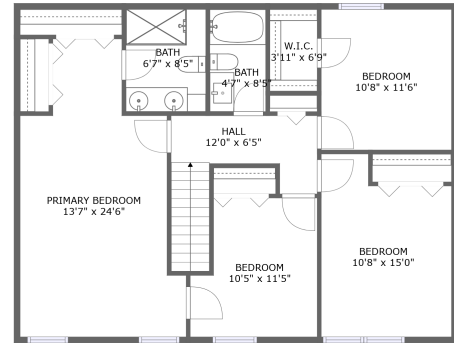


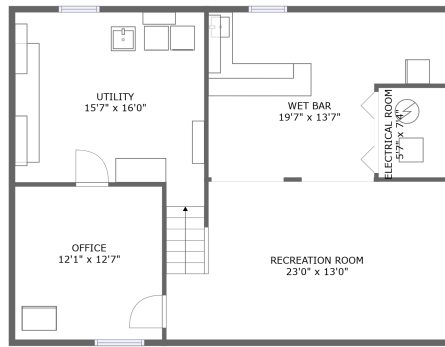
2724 Midland Drive, Naperville, Will County, Illinois, United States, 60564



FLOOR 2




FLOOR 3



FLOOR 1

Property summary


 **1** Garages

 **4** Bedrooms

 **2** Bathrooms

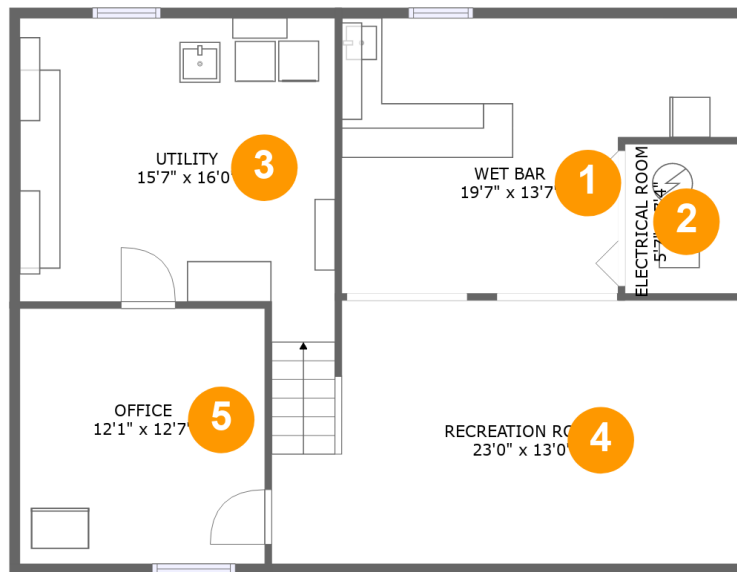
 **1** Half baths

 **3** Floors

 **2,775** Gross living area sqft

 **3,510** Total sqft

2724 Midland Drive, Naperville, Will County, Illinois,
United States, 60564



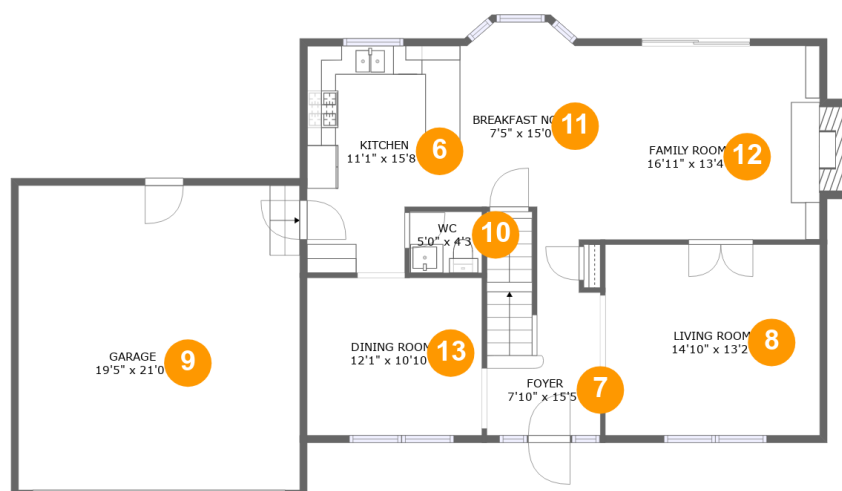
Room dimensions

Floor 1

Total sqft: 1016 Living area: 733

#		Dimensions	sqft	Counted as living area
1	Wet Bar	19'7" x 13'7"	220 sq. ft	Yes
2	Electrical Room	5'7" x 7'4"	41 sq. ft	No
3	Utility	15'7" x 16'0"	223 sq. ft	No
4	Recreation Room	23'0" x 13'0"	291 sq. ft	Yes
5	Office	12'1" x 12'7"	152 sq. ft	Yes

2724 Midland Drive, Naperville, Will County, Illinois,
United States, 60564



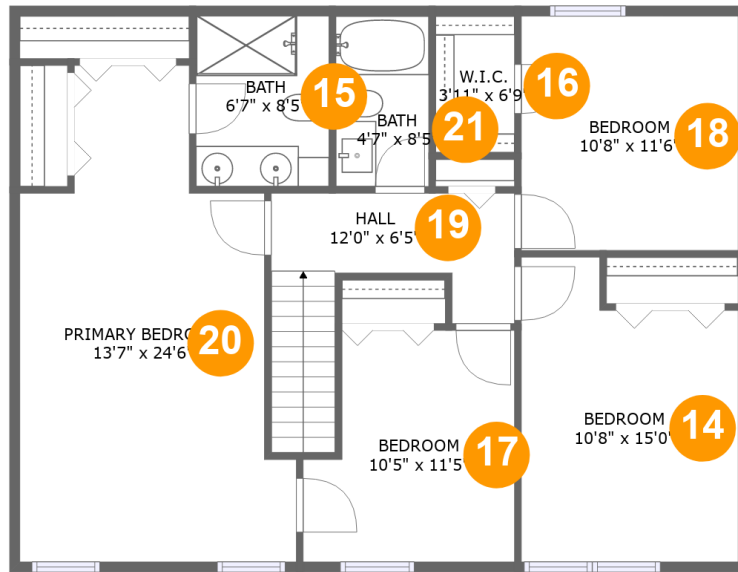
Room dimensions

Floor 2

Total sqft: 1478 Living area: 1026

#		Dimensions	sqft	Counted as living area
6	Kitchen	11'1" x 15'8"	154 sq. ft	Yes
7	Foyer	7'10" x 15'5"	105 sq. ft	Yes
8	Living Room	14'10" x 13'2"	195 sq. ft	Yes
9	Garage	19'5" x 21'0"	409 sq. ft	No
10	WC	5'0" x 4'3"	21 sq. ft	Yes
11	Breakfast Nook	7'5" x 15'0"	98 sq. ft	Yes
12	Family Room	16'11" x 13'4"	236 sq. ft	Yes
13	Dining Room	12'1" x 10'10"	132 sq. ft	Yes

2724 Midland Drive, Naperville, Will County, Illinois, United States, 60564



Room dimensions

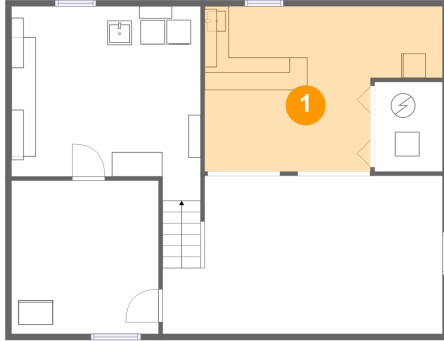
Floor 3

Total sqft: 1016 Living area: 1016

#		Dimensions	sqft	Counted as living area
14	Bedroom	10'8" x 15'0"	143 sq. ft	Yes
15	Bath	6'7" x 8'5"	55 sq. ft	Yes
16	W.I.C.	3'11" x 6'9"	26 sq. ft	Yes
17	Bedroom	10'5" x 11'5"	107 sq. ft	Yes
18	Bedroom	10'8" x 11'6"	123 sq. ft	Yes
19	Hall	12'0" x 6'5"	83 sq. ft	Yes
20	Primary Bedroom	13'7" x 24'6"	263 sq. ft	Yes
21	Bath	4'7" x 8'5"	39 sq. ft	Yes

**2724 Midland Drive, Naperville, Will County, Illinois,
United States, 60564**

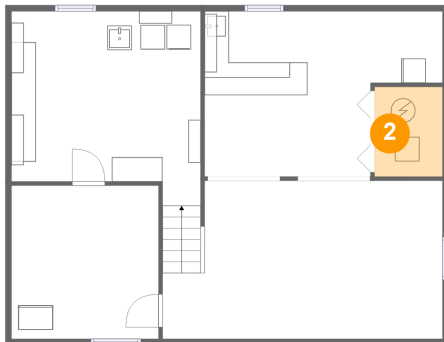
1 Floor 1 - Wet Bar



Dimensions: 19'7" x 13'7"
Area: 220 sq. ft
Counted as living area: Yes

Heated: Yes
Finished: Yes
Enclosed: Yes
Contiguous: Yes
Permitted: Yes
Wet space: No
Addition: No
Conversion: No

2 Floor 1 - Electrical Room

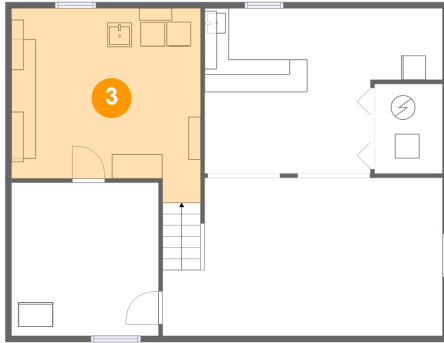


Dimensions: 5'7" x 7'4"
Area: 41 sq. ft
Counted as living area: No

Heated: No
Finished: No
Enclosed: Yes
Contiguous: Yes
Permitted: Yes
Wet space: No
Addition: No
Conversion: No

2724 Midland Drive, Naperville, Will County, Illinois,
United States, 60564

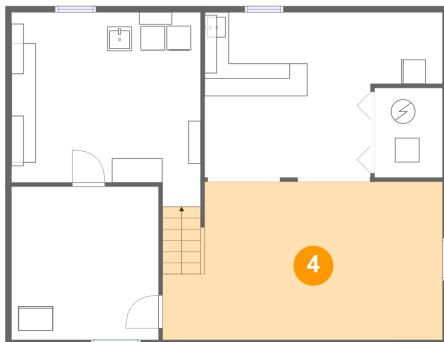
3 Floor 1 - Utility



Dimensions: 15'7" x 16'0"
Area: 223 sq. ft
Counted as living area: No

Heated: Yes
Finished: No
Enclosed: Yes
Contiguous: Yes
Permitted: Yes
Wet space: No
Addition: No
Conversion: No

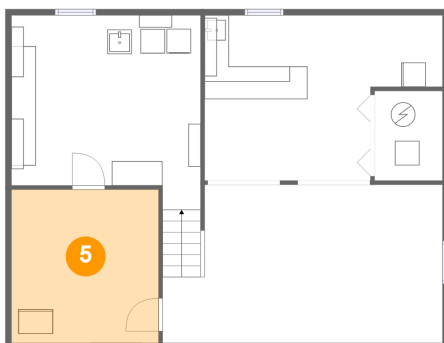
4 Floor 1 - Recreation Room



Dimensions: 23'0" x 13'0"
Area: 291 sq. ft
Counted as living area: Yes

Heated: Yes
Finished: Yes
Enclosed: Yes
Contiguous: Yes
Permitted: Yes
Wet space: No
Addition: No
Conversion: No

5 Floor 1 - Office

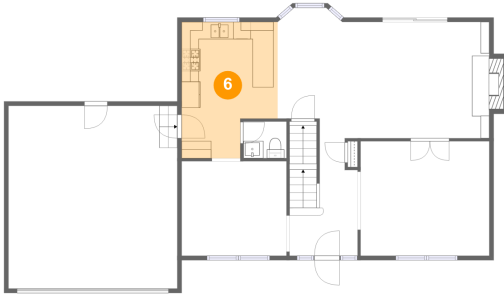


Dimensions: 12'1" x 12'7"
Area: 152 sq. ft
Counted as living area: Yes

Heated: Yes
Finished: Yes
Enclosed: Yes
Contiguous: Yes
Permitted: Yes
Wet space: No
Addition: No
Conversion: No

2724 Midland Drive, Naperville, Will County, Illinois,
United States, 60564

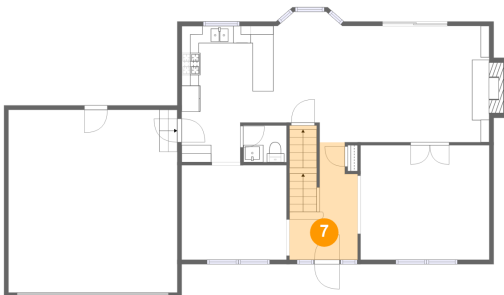
6 Floor 2 - Kitchen



Dimensions: 11'1" x 15'8"
Area: 154 sq. ft
Counted as living area: Yes

Heated: Yes
Finished: Yes
Enclosed: Yes
Contiguous: Yes
Permitted: Yes
Wet space: No
Addition: No
Conversion: No

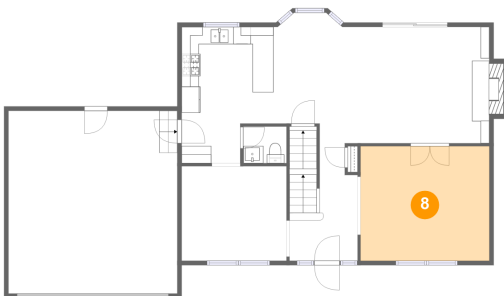
7 Floor 2 - Foyer



Dimensions: 7'10" x 15'5"
Area: 105 sq. ft
Counted as living area: Yes

Heated: Yes
Finished: Yes
Enclosed: Yes
Contiguous: Yes
Permitted: Yes
Wet space: No
Addition: No
Conversion: No

8 Floor 2 - Living Room

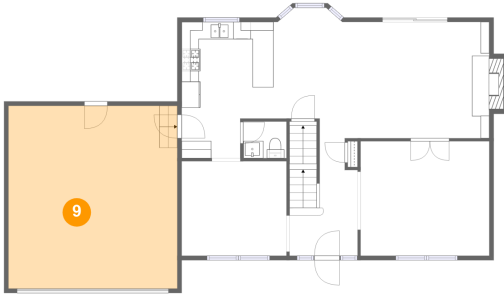


Dimensions: 14'10" x 13'2"
Area: 195 sq. ft
Counted as living area: Yes

Heated: Yes
Finished: Yes
Enclosed: Yes
Contiguous: Yes
Permitted: Yes
Wet space: No
Addition: No
Conversion: No

2724 Midland Drive, Naperville, Will County, Illinois,
United States, 60564

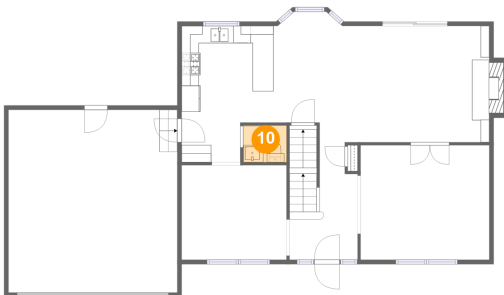
9 Floor 2 - Garage



Dimensions: 19'5" x 21'0"
Area: 409 sq. ft
Counted as living area: No

Heated: No
Finished: No
Enclosed: Yes
Contiguous: Yes
Permitted: Yes
Wet space: No
Addition: No
Conversion: No

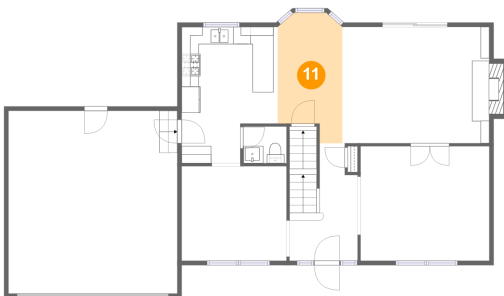
10 Floor 2 - WC



Dimensions: 5'0" x 4'3"
Area: 21 sq. ft
Counted as living area: Yes

Heated: Yes
Finished: Yes
Enclosed: Yes
Contiguous: Yes
Permitted: Yes
Wet space: Yes
Addition: No
Conversion: No

11 Floor 2 - Breakfast Nook

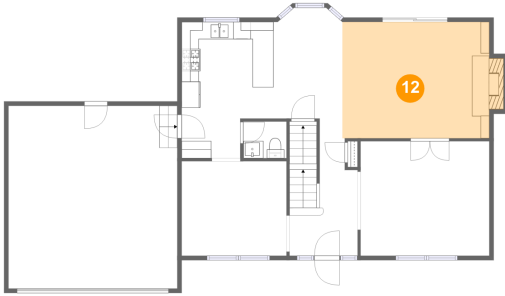


Dimensions: 7'5" x 15'0"
Area: 98 sq. ft
Counted as living area: Yes

Heated: Yes
Finished: Yes
Enclosed: Yes
Contiguous: Yes
Permitted: Yes
Wet space: No
Addition: No
Conversion: No

2724 Midland Drive, Naperville, Will County, Illinois,
United States, 60564

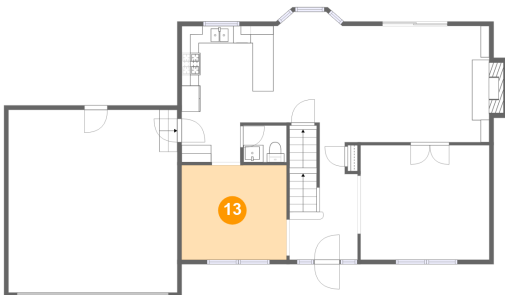
12 Floor 2 - Family Room



Dimensions: 16'11" x 13'4"
Area: 236 sq. ft
Counted as living area: Yes

Heated: Yes
Finished: Yes
Enclosed: Yes
Contiguous: Yes
Permitted: Yes
Wet space: No
Addition: No
Conversion: No

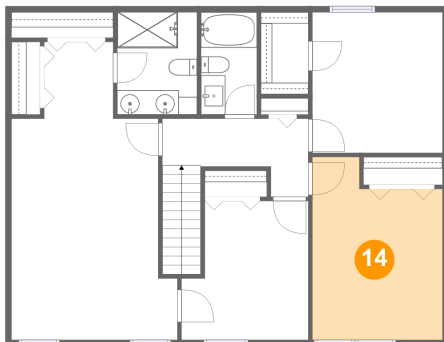
13 Floor 2 - Dining Room



Dimensions: 12'1" x 10'10"
Area: 132 sq. ft
Counted as living area: Yes

Heated: Yes
Finished: Yes
Enclosed: Yes
Contiguous: Yes
Permitted: Yes
Wet space: No
Addition: No
Conversion: No

14 Floor 3 - Bedroom

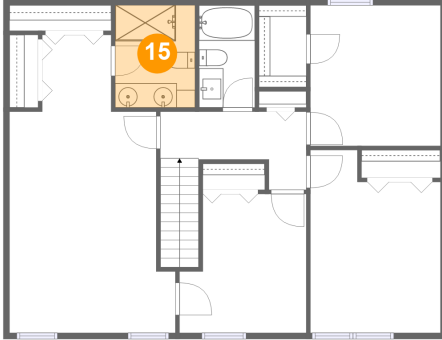


Dimensions: 10'8" x 15'0"
Area: 143 sq. ft
Counted as living area: Yes

Heated: Yes
Finished: Yes
Enclosed: Yes
Contiguous: Yes
Permitted: Yes
Wet space: No
Addition: No
Conversion: No

2724 Midland Drive, Naperville, Will County, Illinois,
United States, 60564

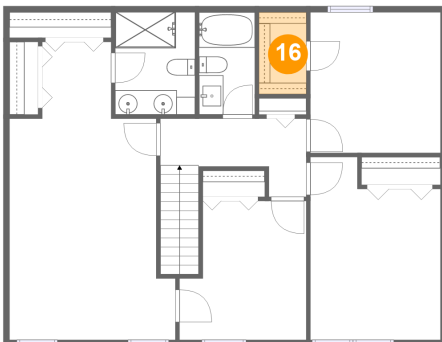
15 Floor 3 - Bath



Dimensions: 6'7" x 8'5"
Area: 55 sq. ft
Counted as living area: Yes

Heated: Yes
Finished: Yes
Enclosed: Yes
Contiguous: Yes
Permitted: Yes
Wet space: Yes
Addition: No
Conversion: No

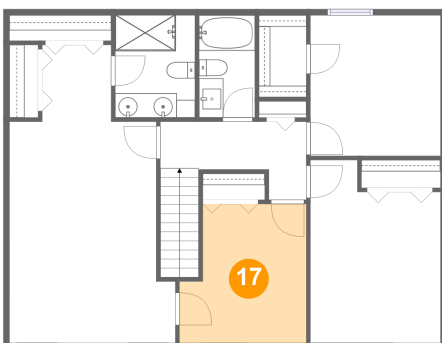
16 Floor 3 - W.I.C.



Dimensions: 3'11" x 6'9"
Area: 26 sq. ft
Counted as living area: Yes

Heated: Yes
Finished: Yes
Enclosed: Yes
Contiguous: Yes
Permitted: Yes
Wet space: No
Addition: No
Conversion: No

17 Floor 3 - Bedroom

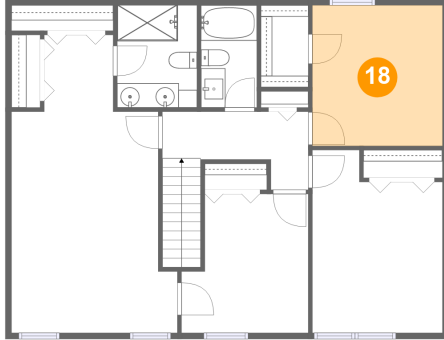


Dimensions: 10'5" x 11'5"
Area: 107 sq. ft
Counted as living area: Yes

Heated: Yes
Finished: Yes
Enclosed: Yes
Contiguous: Yes
Permitted: Yes
Wet space: No
Addition: No
Conversion: No

2724 Midland Drive, Naperville, Will County, Illinois,
United States, 60564

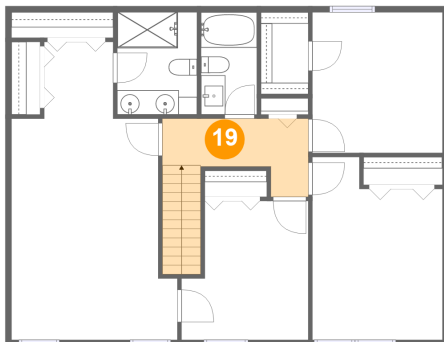
18 Floor 3 - Bedroom



Dimensions: 10'8" x 11'6"
Area: 123 sq. ft
Counted as living area: Yes

Heated: Yes
Finished: Yes
Enclosed: Yes
Contiguous: Yes
Permitted: Yes
Wet space: No
Addition: No
Conversion: No

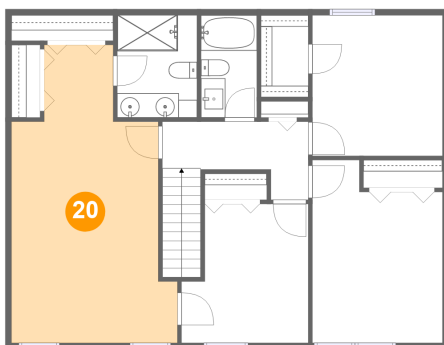
19 Floor 3 - Hall



Dimensions: 12'0" x 6'5"
Area: 83 sq. ft
Counted as living area: Yes

Heated: Yes
Finished: Yes
Enclosed: Yes
Contiguous: Yes
Permitted: Yes
Wet space: No
Addition: No
Conversion: No

20 Floor 3 - Primary Bedroom

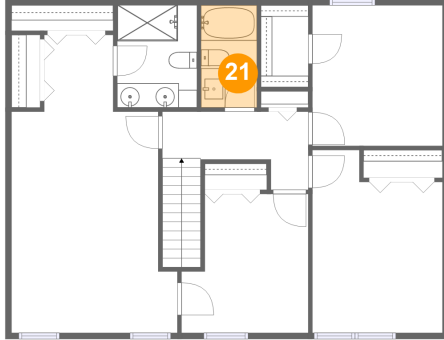


Dimensions: 13'7" x 24'6"
Area: 263 sq. ft
Counted as living area: Yes

Heated: Yes
Finished: Yes
Enclosed: Yes
Contiguous: Yes
Permitted: Yes
Wet space: No
Addition: No
Conversion: No

2724 Midland Drive, Naperville, Will County, Illinois,
United States, 60564

21 Floor 3 - Bath



Dimensions: 4'7" x 8'5"
Area: 39 sq. ft
Counted as living area: Yes

Heated: Yes
Finished: Yes
Enclosed: Yes
Contiguous: Yes
Permitted: Yes
Wet space: Yes
Addition: No
Conversion: No