


425 Burton Dr, Alpharetta, GA, US



Property summary


 **2** Garages

 **4** Bedrooms

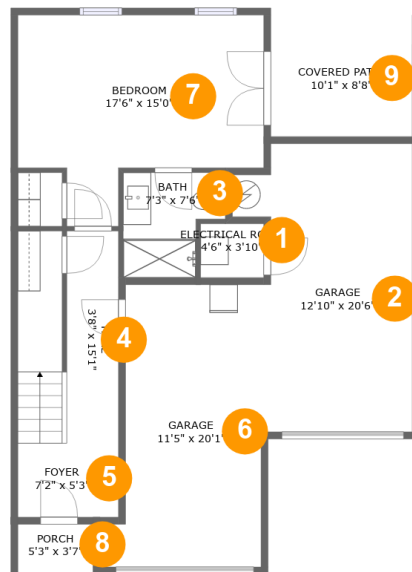
 **3** Bathrooms

 **1** Half baths

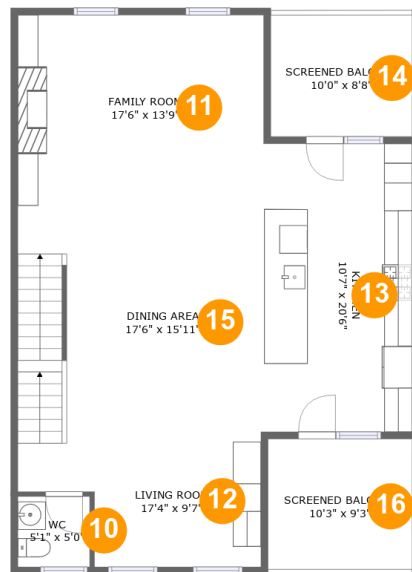
 **3** Floors

 **2,470** Gross living area sqft

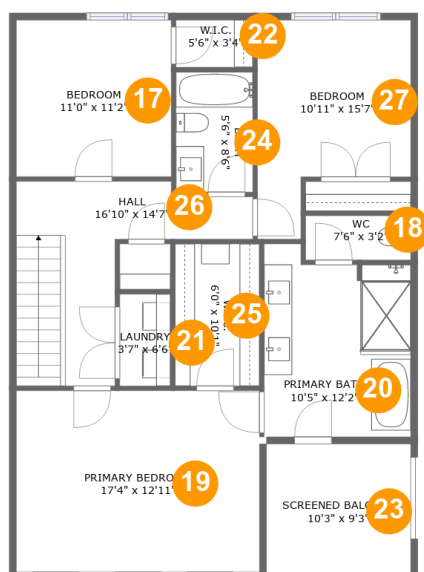
 **3,330** Total sqft

425 Burton Dr, Alpharetta, GA, US**Room dimensions****Floor 1****Total sqft: 1040****Living area: 463**

#		Dimensions	sqft	Counted as living area
1	Electrical Room	4'6" x 3'10"	17 sq. ft	No
2	Garage	12'10" x 20'6"	222 sq. ft	No
3	Bath	7'3" x 7'6"	46 sq. ft	Yes
4	Hall	3'8" x 15'1"	105 sq. ft	Yes
5	Foyer	7'2" x 5'3"	38 sq. ft	Yes
6	Garage	11'5" x 20'1"	199 sq. ft	No
7	Bedroom	17'6" x 15'0"	205 sq. ft	Yes
8	Porch	5'3" x 3'7"	19 sq. ft	No
9	Covered Patio	10'1" x 8'8"	87 sq. ft	No

425 Burton Dr, Alpharetta, GA, US**Room dimensions****Floor 2****Total sqft: 1145 Living area: 959**

#		Dimensions	sqft	Counted as living area
10	WC	5'1" x 5'0"	26 sq. ft	Yes
11	Family Room	17'6" x 13'9"	240 sq. ft	Yes
12	Living Room	17'4" x 9'7"	137 sq. ft	Yes
13	Kitchen	10'7" x 20'6"	216 sq. ft	Yes
14	Screened Balcony	10'0" x 8'8"	87 sq. ft	No
15	Dining Area	17'6" x 15'11"	278 sq. ft	Yes
16	Screened Balcony	10'3" x 9'3"	95 sq. ft	No

425 Burton Dr, Alpharetta, GA, US**Room dimensions**

Floor 3

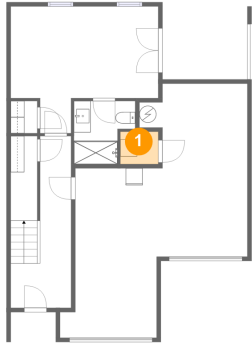
Total sqft: 1145 Living area: 1048

#		Dimensions	sqft	Counted as living area
17	Bedroom	11'0" x 11'2"	123 sq. ft	Yes
18	WC	7'6" x 3'2"	24 sq. ft	Yes
19	Primary Bedroom	17'4" x 12'11"	223 sq. ft	Yes
20	Primary Bath	10'5" x 12'2"	131 sq. ft	Yes
21	Laundry	3'7" x 6'6"	24 sq. ft	Yes
22	W.I.C.	5'6" x 3'4"	18 sq. ft	Yes
23	Screened Balcony	10'3" x 9'3"	95 sq. ft	No
24	Bath	5'6" x 8'6"	47 sq. ft	Yes
25	W.I.C.	6'0" x 10'1"	61 sq. ft	Yes
26	Hall	16'10" x 14'7"	136 sq. ft	Yes
27	Bedroom	10'11" x 15'7"	135 sq. ft	Yes

Scan captured on Mon, 17 Feb 2025 19:42:04 GMT

Information is calculated by Cubicasa technology deemed highly reliable but not guaranteed.

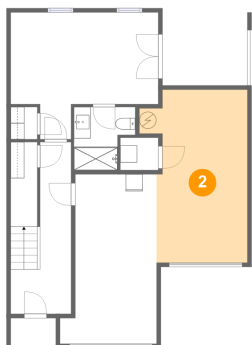
1 Floor 1 - Electrical Room



Dimensions: 4'6" x 3'10"
Area: 17 sq. ft
Counted as living area: No

Heated: No
Finished: No
Enclosed: Yes
Contiguous: Yes
Permitted: Yes
Wet space: No
Addition: No
Conversion: No

2 Floor 1 - Garage

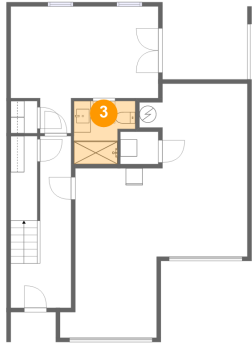


Dimensions: 12'10" x 20'6"
Area: 222 sq. ft
Counted as living area: No

Heated: No
Finished: No
Enclosed: Yes
Contiguous: Yes
Permitted: Yes
Wet space: No
Addition: No
Conversion: No

425 Burton Dr, Alpharetta, GA, US

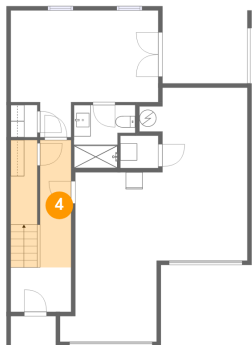
3 Floor 1 - Bath



Dimensions: 7'3" x 7'6"
Area: 46 sq. ft
Counted as living area: Yes

Heated: Yes
Finished: Yes
Enclosed: Yes
Contiguous: Yes
Permitted: Yes
Wet space: Yes
Addition: No
Conversion: No

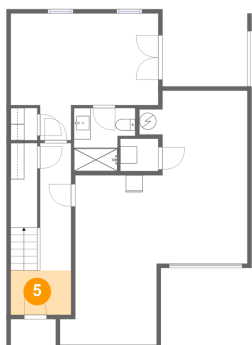
4 Floor 1 - Hall



Dimensions: 3'8" x 15'1"
Area: 105 sq. ft
Counted as living area: Yes

Heated: Yes
Finished: Yes
Enclosed: Yes
Contiguous: Yes
Permitted: Yes
Wet space: No
Addition: No
Conversion: No

5 Floor 1 - Foyer

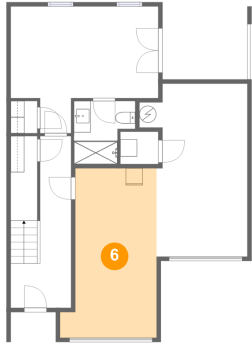


Dimensions: 7'2" x 5'3"
Area: 38 sq. ft
Counted as living area: Yes

Heated: Yes
Finished: Yes
Enclosed: Yes
Contiguous: Yes
Permitted: Yes
Wet space: No
Addition: No
Conversion: No

425 Burton Dr, Alpharetta, GA, US

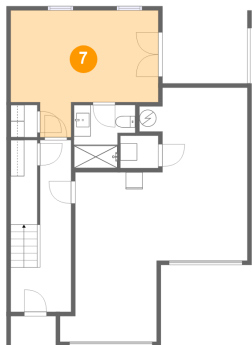
6 Floor 1 - Garage



Dimensions: 11'5" x 20'1"
Area: 199 sq. ft
Counted as living area: No

Heated: No
Finished: No
Enclosed: Yes
Contiguous: Yes
Permitted: Yes
Wet space: No
Addition: No
Conversion: No

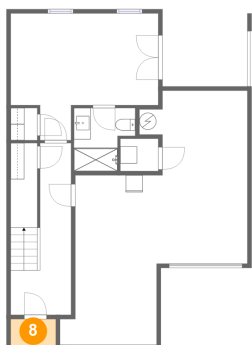
7 Floor 1 - Bedroom



Dimensions: 17'6" x 15'0"
Area: 205 sq. ft
Counted as living area: Yes

Heated: Yes
Finished: Yes
Enclosed: Yes
Contiguous: Yes
Permitted: Yes
Wet space: No
Addition: No
Conversion: No

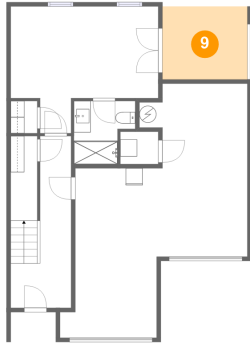
8 Floor 1 - Porch



Dimensions: 5'3" x 3'7"
Area: 19 sq. ft
Counted as living area: No

Heated: No
Finished: Yes
Enclosed: No
Contiguous: Yes
Permitted: Yes
Wet space: No
Addition: No
Conversion: No

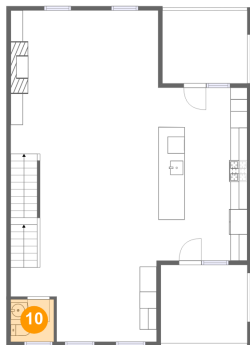
9 Floor 1 - Covered Patio



Dimensions: 10'1" x 8'8"
Area: 87 sq. ft
Counted as living area: No

Heated: No
Finished: Yes
Enclosed: No
Contiguous: Yes
Permitted: Yes
Wet space: No
Addition: No
Conversion: No

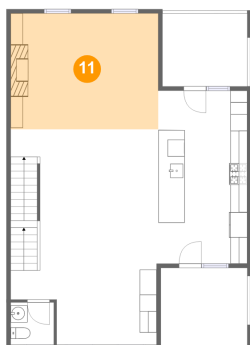
10 Floor 2 - WC



Dimensions: 5'1" x 5'0"
Area: 26 sq. ft
Counted as living area: Yes

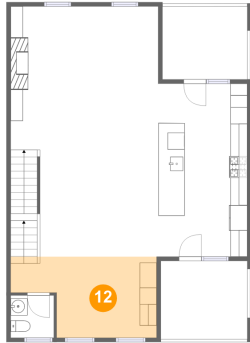
Heated: Yes
Finished: Yes
Enclosed: Yes
Contiguous: Yes
Permitted: Yes
Wet space: Yes
Addition: No
Conversion: No

11 Floor 2 - Family Room



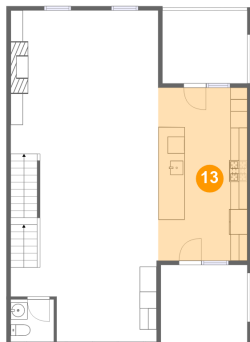
Dimensions: 17'6" x 13'9"
Area: 240 sq. ft
Counted as living area: Yes

Heated: Yes
Finished: Yes
Enclosed: Yes
Contiguous: Yes
Permitted: Yes
Wet space: No
Addition: No
Conversion: No

425 Burton Dr, Alpharetta, GA, US**12 Floor 2 - Living Room**

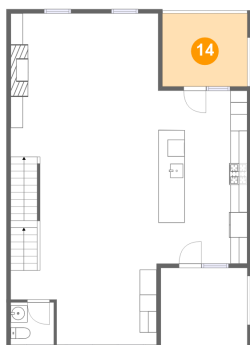
Dimensions: 17'4" x 9'7"
Area: 137 sq. ft
Counted as living area: Yes

Heated: Yes
Finished: Yes
Enclosed: Yes
Contiguous: Yes
Permitted: Yes
Wet space: No
Addition: No
Conversion: No

13 Floor 2 - Kitchen

Dimensions: 10'7" x 20'6"
Area: 216 sq. ft
Counted as living area: Yes

Heated: Yes
Finished: Yes
Enclosed: Yes
Contiguous: Yes
Permitted: Yes
Wet space: No
Addition: No
Conversion: No

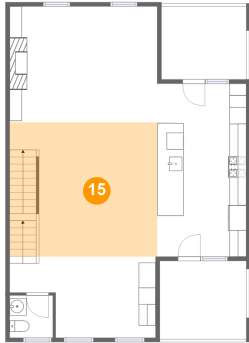
14 Floor 2 - Screened Balcony

Dimensions: 10'0" x 8'8"
Area: 87 sq. ft
Counted as living area: No

Heated: No
Finished: Yes
Enclosed: No
Contiguous: Yes
Permitted: Yes
Wet space: No
Addition: No
Conversion: No

425 Burton Dr, Alpharetta, GA, US

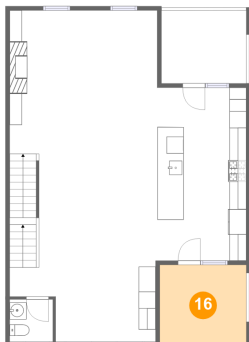
15 Floor 2 - Dining Area



Dimensions: 17'6" x 15'11"
Area: 278 sq. ft
Counted as living area: Yes

Heated: Yes
Finished: Yes
Enclosed: Yes
Contiguous: Yes
Permitted: Yes
Wet space: No
Addition: No
Conversion: No

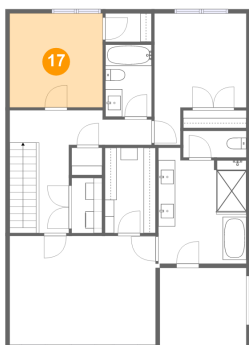
16 Floor 2 - Screened Balcony



Dimensions: 10'3" x 9'3"
Area: 95 sq. ft
Counted as living area: No

Heated: No
Finished: Yes
Enclosed: No
Contiguous: Yes
Permitted: Yes
Wet space: No
Addition: No
Conversion: No

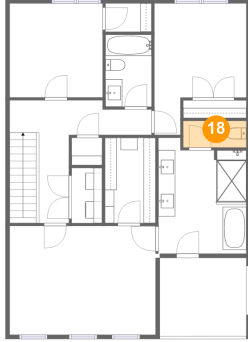
17 Floor 3 - Bedroom



Dimensions: 11'0" x 11'2"
Area: 123 sq. ft
Counted as living area: Yes

Heated: Yes
Finished: Yes
Enclosed: Yes
Contiguous: Yes
Permitted: Yes
Wet space: No
Addition: No
Conversion: No

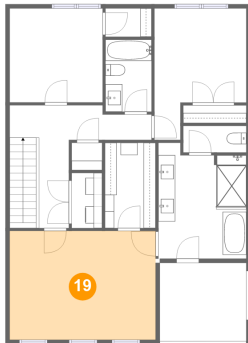
18 Floor 3 - WC



Dimensions: 7'6" x 3'2"
Area: 24 sq. ft
Counted as living area: Yes

Heated: Yes
Finished: Yes
Enclosed: Yes
Contiguous: Yes
Permitted: Yes
Wet space: Yes
Addition: No
Conversion: No

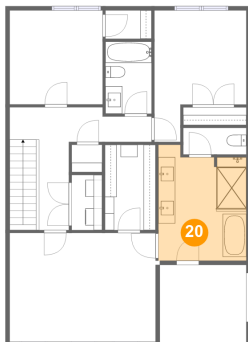
19 Floor 3 - Primary Bedroom



Dimensions: 17'4" x 12'11"
Area: 223 sq. ft
Counted as living area: Yes

Heated: Yes
Finished: Yes
Enclosed: Yes
Contiguous: Yes
Permitted: Yes
Wet space: No
Addition: No
Conversion: No

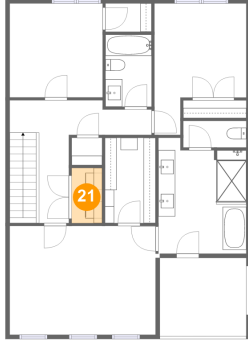
20 Floor 3 - Primary Bath



Dimensions: 10'5" x 12'2"
Area: 131 sq. ft
Counted as living area: Yes

Heated: Yes
Finished: Yes
Enclosed: Yes
Contiguous: Yes
Permitted: Yes
Wet space: Yes
Addition: No
Conversion: No

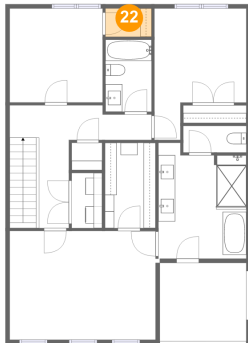
21 Floor 3 - Laundry



Dimensions: 3'7" x 6'6"
Area: 24 sq. ft
Counted as living area: Yes

Heated: Yes
Finished: Yes
Enclosed: Yes
Contiguous: Yes
Permitted: Yes
Wet space: No
Addition: No
Conversion: No

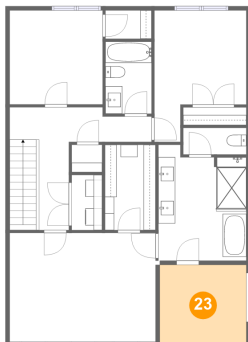
22 Floor 3 - W.I.C.



Dimensions: 5'6" x 3'4"
Area: 18 sq. ft
Counted as living area: Yes

Heated: Yes
Finished: Yes
Enclosed: Yes
Contiguous: Yes
Permitted: Yes
Wet space: No
Addition: No
Conversion: No

23 Floor 3 - Screened Balcony

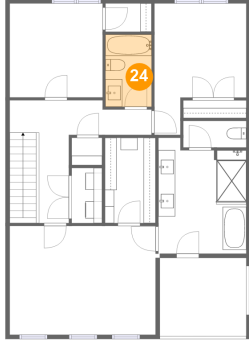


Dimensions: 10'3" x 9'3"
Area: 95 sq. ft
Counted as living area: No

Heated: No
Finished: Yes
Enclosed: No
Contiguous: Yes
Permitted: Yes
Wet space: No
Addition: No
Conversion: No

425 Burton Dr, Alpharetta, GA, US

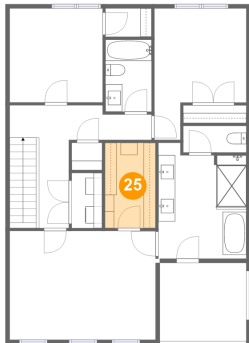
24 Floor 3 - Bath



Dimensions: 5'6" x 8'6"
Area: 47 sq. ft
Counted as living area: Yes

Heated: Yes
Finished: Yes
Enclosed: Yes
Contiguous: Yes
Permitted: Yes
Wet space: Yes
Addition: No
Conversion: No

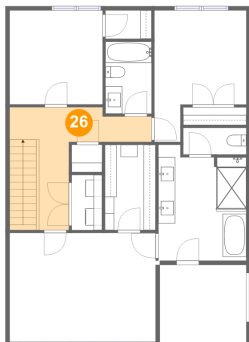
25 Floor 3 - W.I.C.



Dimensions: 6'0" x 10'1"
Area: 61 sq. ft
Counted as living area: Yes

Heated: Yes
Finished: Yes
Enclosed: Yes
Contiguous: Yes
Permitted: Yes
Wet space: No
Addition: No
Conversion: No

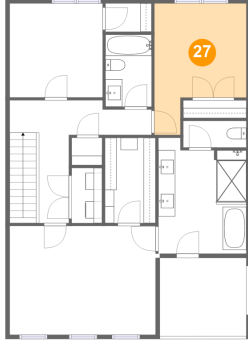
26 Floor 3 - Hall



Dimensions: 16'10" x 14'7"
Area: 136 sq. ft
Counted as living area: Yes

Heated: Yes
Finished: Yes
Enclosed: Yes
Contiguous: Yes
Permitted: Yes
Wet space: No
Addition: No
Conversion: No

27 Floor 3 - Bedroom



Dimensions: 10'11" x 15'7"
Area: 135 sq. ft
Counted as living area: Yes

Heated: Yes
Finished: Yes
Enclosed: Yes
Contiguous: Yes
Permitted: Yes
Wet space: No
Addition: No
Conversion: No