

Home data report

1341 Pfingsten Rd,Northbrook,IL,US




Total Area: 5675 sq. ft

Below Ground: 1657 sq. ft, 1st Floor: 2006 sq. ft, 2nd Floor: 2012 sq. ft  
Excluded: Garage 803 sq. ft, Fireplace 13 sq. ft, Balcony 226 sq. ft, Open to below 98 sq. ft, Walls: 369 sq. ft

Property summary

 **3** Floors

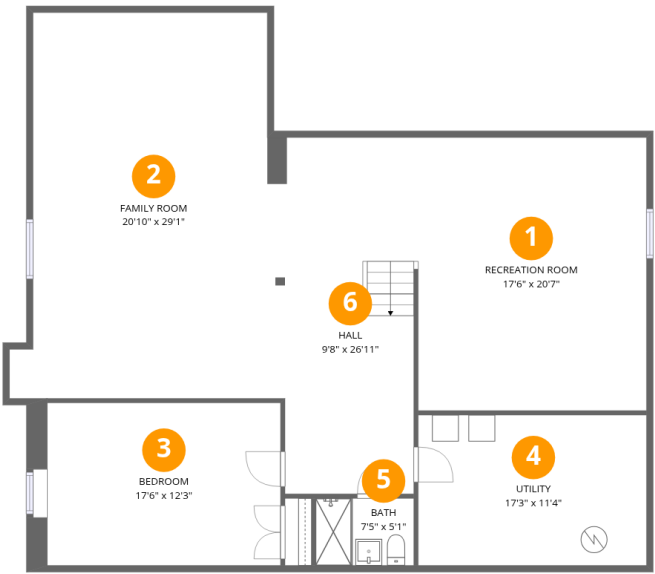
 **6** Bedrooms

 **6** Bathrooms

 **1** Garages

Home data report

1341 Pfingsten Rd,Northbrook,IL,US



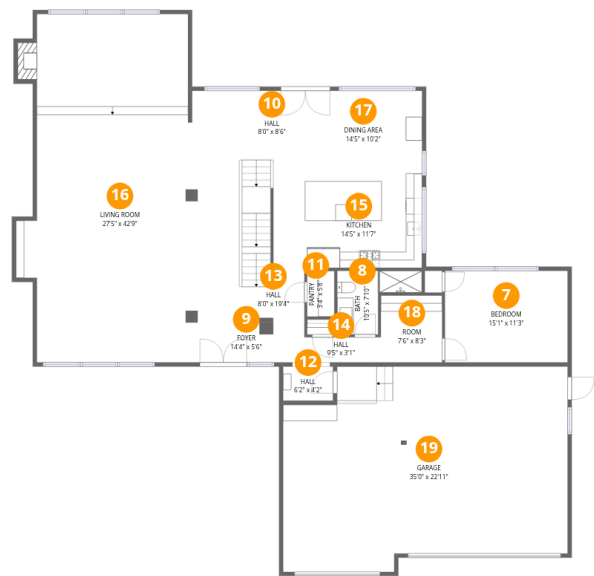
Room dimensions

Floor 1 Below grade Total:1657sqft   Excluded: 0sqft

#		Dimensions	sqft	Counted as living area
1	Recreation Room	17'6" x 20'7"	358 sq. ft	Yes
2	Family Room	20'10" x 29'1"	547 sq. ft	Yes
3	Bedroom	17'6" x 12'3"	220 sq. ft	Yes
4	Utility	17'3" x 11'4"	195 sq. ft	Yes
5	Bath	7'5" x 5'1"	37 sq. ft	Yes
6	Hall	9'8" x 26'11"	261 sq. ft	Yes

Home data report

1341 Pfingsten Rd,Northbrook,IL,US



Room dimensions

Floor 2 Total:2006sqft Excluded: 816sqft

#		Dimensions	sqft	Counted as living area
7	Bedroom	15'1" x 11'3"	170 sq. ft	Yes
8	Bath	10'5" x 7'10"	54 sq. ft	Yes
9	Foyer	14'4" x 5'6"	78 sq. ft	Yes
10	Hall	8'0" x 8'6"	68 sq. ft	Yes
11	Pantry	3'4" x 5'8"	19 sq. ft	Yes
12	Hall	6'2" x 4'2"	26 sq. ft	Yes
13	Hall	8'0" x 19'4"	155 sq. ft	Yes
14	Hall	9'5" x 3'1"	29 sq. ft	Yes
15	Kitchen	14'5" x 11'7"	168 sq. ft	Yes
16	Living Room	27'5" x 42'9"	998 sq. ft	Yes
17	Dining Area	14'5" x 10'2"	147 sq. ft	Yes

Home data report

1341 Pfingsten Rd,Northbrook,IL,US

#		Dimensions	sqft	Counted as living area
18	Room	7'6" x 8'3"	62 sq. ft	Yes
19	Garage	35'0" x 22'11"	803 sq. ft	No

Home data report

1341 Pfingsten Rd,Northbrook,IL,US



Room dimensions

Floor 3 Total:2012sqft Excluded: 324sqft

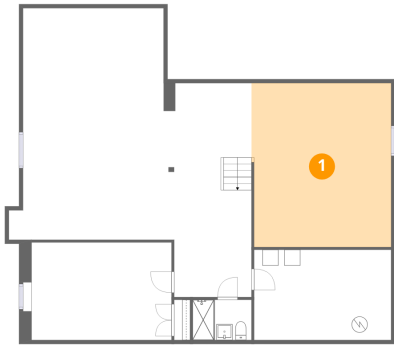
#		Dimensions	sqft	Counted as living area
20	W.I.C.	12'4" x 7'0"	95 sq. ft	Yes
21	W.I.C.	7'3" x 7'2"	52 sq. ft	Yes
22	Bedroom	13'8" x 16'6"	227 sq. ft	Yes
23	Sitting Room	10'5" x 10'5"	109 sq. ft	Yes
24	Bath	5'4" x 10'0"	54 sq. ft	Yes
25	Bath	4'8" x 10'0"	47 sq. ft	Yes
26	Primary Bedroom	18'9" x 14'8"	275 sq. ft	Yes
27	Laundry	4'6" x 6'4"	31 sq. ft	Yes
28	Bath	4'6" x 8'10"	40 sq. ft	Yes
29	Open To Below	9'8" x 10'2"	98 sq. ft	No
30	Bedroom	18'3" x 17'7"	256 sq. ft	Yes

## Home data report

**1341 Pfingsten Rd,Northbrook,IL,US**

#		Dimensions	sqft	Counted as living area
31	Hall	7'6" x 5'7"	42 sq. ft	Yes
32	Hall	9'8" x 22'1"	187 sq. ft	Yes
33	Bedroom	18'3" x 13'11"	255 sq. ft	Yes
34	Balcony	18'11" x 12'5"	226 sq. ft	No
35	Primary Bath	14'10" x 18'4"	183 sq. ft	Yes

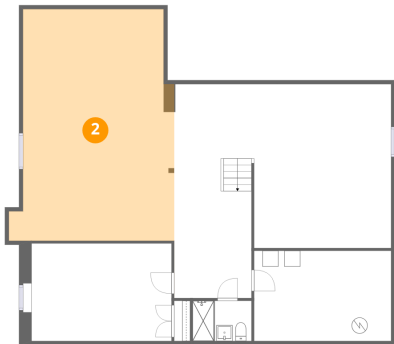
1 Floor 1 - Recreation Room



Dimensions: 17'6" x 20'7"  
Area: 358 sq. ft  
Counted as living area: Yes

Heated: Yes  
Finished: Yes  
Enclosed: Yes  
Contiguous: Yes  
Permitted: Yes  
Wet space: No  
Addition: No  
Conversion: No

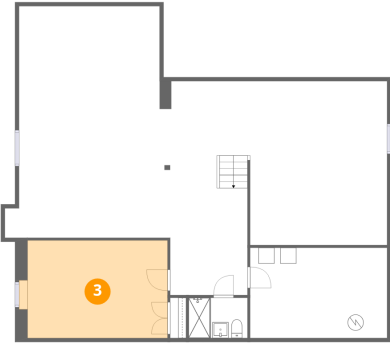
2 Floor 1 - Family Room



Dimensions: 20'10" x 29'1"  
Area: 547 sq. ft  
Counted as living area: Yes

Heated: Yes  
Finished: Yes  
Enclosed: Yes  
Contiguous: Yes  
Permitted: Yes  
Wet space: No  
Addition: No  
Conversion: No

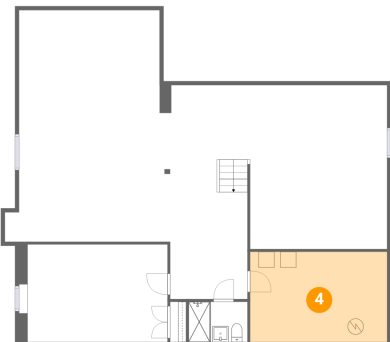
### 3 Floor 1 - Bedroom



Dimensions: 17'6" x 12'3"  
Area: 220 sq. ft  
Counted as living area: Yes

Heated: Yes  
Finished: Yes  
Enclosed: Yes  
Contiguous: Yes  
Permitted: Yes  
Wet space: No  
Addition: No  
Conversion: No

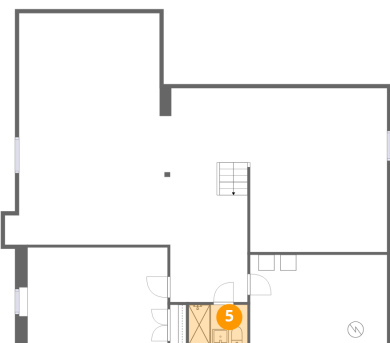
### 4 Floor 1 - Utility



Dimensions: 17'3" x 11'4"  
Area: 195 sq. ft  
Counted as living area: Yes

Heated: Yes  
Finished: Yes  
Enclosed: Yes  
Contiguous: Yes  
Permitted: Yes  
Wet space: No  
Addition: No  
Conversion: No

### 5 Floor 1 - Bath

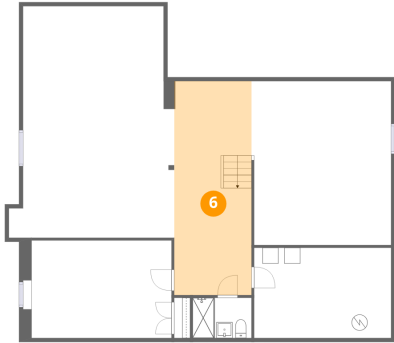


Dimensions: 7'5" x 5'1"  
Area: 37 sq. ft  
Counted as living area: Yes

Heated: Yes  
Finished: Yes  
Enclosed: Yes  
Contiguous: Yes  
Permitted: Yes  
Wet space: Yes  
Addition: No  
Conversion: No



## 6 Floor 1 - Hall



Dimensions: 9'8" x 26'11"  
Area: 261 sq. ft  
Counted as living area: Yes

Heated: Yes  
Finished: Yes  
Enclosed: Yes  
Contiguous: Yes  
Permitted: Yes  
Wet space: No  
Addition: No  
Conversion: No

## 7 Floor 2 - Bedroom



Dimensions: 15'1" x 11'3"  
Area: 170 sq. ft  
Counted as living area: Yes

Heated: Yes  
Finished: Yes  
Enclosed: Yes  
Contiguous: Yes  
Permitted: Yes  
Wet space: No  
Addition: No  
Conversion: No

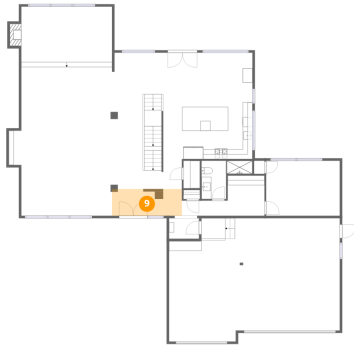
## 8 Floor 2 - Bath



Dimensions: 10'5" x 7'10"  
Area: 54 sq. ft  
Counted as living area: Yes

Heated: Yes  
Finished: Yes  
Enclosed: Yes  
Contiguous: Yes  
Permitted: Yes  
Wet space: Yes  
Addition: No  
Conversion: No

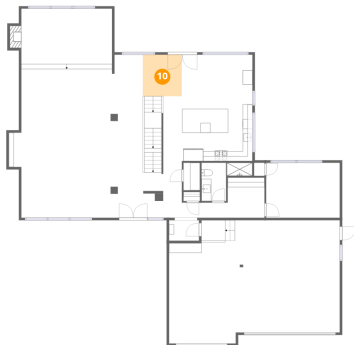
## 9 Floor 2 - Foyer



Dimensions: 14'4" x 5'6"  
Area: 78 sq. ft  
Counted as living area: Yes

Heated: Yes  
Finished: Yes  
Enclosed: Yes  
Contiguous: Yes  
Permitted: Yes  
Wet space: No  
Addition: No  
Conversion: No

## 10 Floor 2 - Hall



Dimensions: 8'0" x 8'6"  
Area: 68 sq. ft  
Counted as living area: Yes

Heated: Yes  
Finished: Yes  
Enclosed: Yes  
Contiguous: Yes  
Permitted: Yes  
Wet space: No  
Addition: No  
Conversion: No

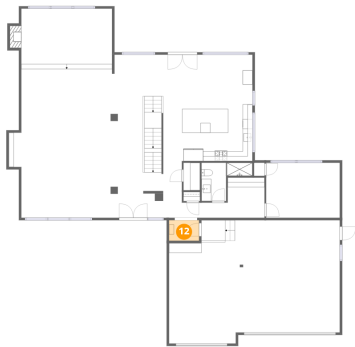
## 11 Floor 2 - Pantry



Dimensions: 3'4" x 5'8"  
Area: 19 sq. ft  
Counted as living area: Yes

Heated: Yes  
Finished: Yes  
Enclosed: Yes  
Contiguous: Yes  
Permitted: Yes  
Wet space: No  
Addition: No  
Conversion: No

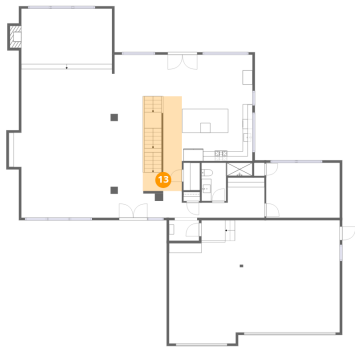
12 Floor 2 - Hall



Dimensions: 6'2" x 4'2"  
Area: 26 sq. ft  
Counted as living area: Yes

Heated: Yes  
Finished: Yes  
Enclosed: Yes  
Contiguous: Yes  
Permitted: Yes  
Wet space: No  
Addition: No  
Conversion: No

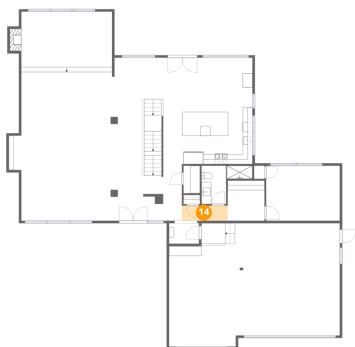
13 Floor 2 - Hall



Dimensions: 8'0" x 19'4"  
Area: 155 sq. ft  
Counted as living area: Yes

Heated: Yes  
Finished: Yes  
Enclosed: Yes  
Contiguous: Yes  
Permitted: Yes  
Wet space: No  
Addition: No  
Conversion: No

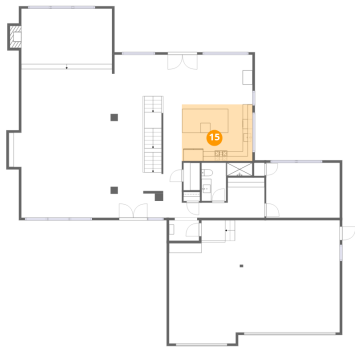
14 Floor 2 - Hall



Dimensions: 9'5" x 3'1"  
Area: 29 sq. ft  
Counted as living area: Yes

Heated: Yes  
Finished: Yes  
Enclosed: Yes  
Contiguous: Yes  
Permitted: Yes  
Wet space: No  
Addition: No  
Conversion: No

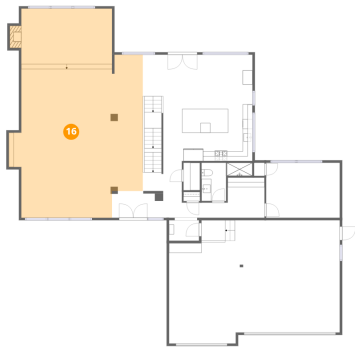
15 Floor 2 - Kitchen



Dimensions: 14'5" x 11'7"  
Area: 168 sq. ft  
Counted as living area: Yes

Heated: Yes  
Finished: Yes  
Enclosed: Yes  
Contiguous: Yes  
Permitted: Yes  
Wet space: No  
Addition: No  
Conversion: No

16 Floor 2 - Living Room



Dimensions: 27'5" x 42'9"  
Area: 998 sq. ft  
Counted as living area: Yes

Heated: Yes  
Finished: Yes  
Enclosed: Yes  
Contiguous: Yes  
Permitted: Yes  
Wet space: No  
Addition: No  
Conversion: No

17 Floor 2 - Dining Area



Dimensions: 14'5" x 10'2"  
Area: 147 sq. ft  
Counted as living area: Yes

Heated: Yes  
Finished: Yes  
Enclosed: Yes  
Contiguous: Yes  
Permitted: Yes  
Wet space: No  
Addition: No  
Conversion: No

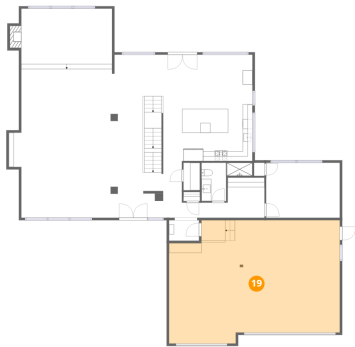
18 Floor 2 - Room



Dimensions: 7'6" x 8'3"  
Area: 62 sq. ft  
Counted as living area: Yes

Heated: Yes  
Finished: Yes  
Enclosed: Yes  
Contiguous: Yes  
Permitted: Yes  
Wet space: No  
Addition: No  
Conversion: No

19 Floor 2 - Garage



Dimensions: 35'0" x 22'11"  
Area: 803 sq. ft  
Counted as living area: No

Heated: No  
Finished: No  
Enclosed: Yes  
Contiguous: Yes  
Permitted: Yes  
Wet space: No  
Addition: No  
Conversion: No

20 Floor 3 - W.I.C.



Dimensions: 12'4" x 7'0"  
Area: 95 sq. ft  
Counted as living area: Yes

Heated: Yes  
Finished: Yes  
Enclosed: Yes  
Contiguous: Yes  
Permitted: Yes  
Wet space: No  
Addition: No  
Conversion: No

### 21 Floor 3 - W.I.C.



Dimensions: 7'3" x 7'2"  
Area: 52 sq. ft  
Counted as living area: Yes

Heated: Yes  
Finished: Yes  
Enclosed: Yes  
Contiguous: Yes  
Permitted: Yes  
Wet space: No  
Addition: No  
Conversion: No

### 22 Floor 3 - Bedroom



Dimensions: 13'8" x 16'6"  
Area: 227 sq. ft  
Counted as living area: Yes

Heated: Yes  
Finished: Yes  
Enclosed: Yes  
Contiguous: Yes  
Permitted: Yes  
Wet space: No  
Addition: No  
Conversion: No

### 23 Floor 3 - Sitting Room



Dimensions: 10'5" x 10'5"  
Area: 109 sq. ft  
Counted as living area: Yes

Heated: Yes  
Finished: Yes  
Enclosed: Yes  
Contiguous: Yes  
Permitted: Yes  
Wet space: No  
Addition: No  
Conversion: No

24 Floor 3 - Bath



Dimensions: 5'4" x 10'0"  
Area: 54 sq. ft  
Counted as living area: Yes

Heated: Yes  
Finished: Yes  
Enclosed: Yes  
Contiguous: Yes  
Permitted: Yes  
Wet space: Yes  
Addition: No  
Conversion: No

25 Floor 3 - Bath



Dimensions: 4'8" x 10'0"  
Area: 47 sq. ft  
Counted as living area: Yes

Heated: Yes  
Finished: Yes  
Enclosed: Yes  
Contiguous: Yes  
Permitted: Yes  
Wet space: Yes  
Addition: No  
Conversion: No

26 Floor 3 - Primary Bedroom



Dimensions: 18'9" x 14'8"  
Area: 275 sq. ft  
Counted as living area: Yes

Heated: Yes  
Finished: Yes  
Enclosed: Yes  
Contiguous: Yes  
Permitted: Yes  
Wet space: No  
Addition: No  
Conversion: No

### 27 Floor 3 - Laundry



Dimensions: 4'6" x 6'4"  
Area: 31 sq. ft  
Counted as living area: Yes

Heated: Yes  
Finished: Yes  
Enclosed: Yes  
Contiguous: Yes  
Permitted: Yes  
Wet space: No  
Addition: No  
Conversion: No

### 28 Floor 3 - Bath



Dimensions: 4'6" x 8'10"  
Area: 40 sq. ft  
Counted as living area: Yes

Heated: Yes  
Finished: Yes  
Enclosed: Yes  
Contiguous: Yes  
Permitted: Yes  
Wet space: Yes  
Addition: No  
Conversion: No

### 29 Floor 3 - Open To Below



Dimensions: 9'8" x 10'2"  
Area: 98 sq. ft  
Counted as living area: No

Heated: No  
Finished: No  
Enclosed: No  
Contiguous: Yes  
Permitted: No  
Wet space: No  
Addition: No  
Conversion: No



30 Floor 3 - Bedroom



Dimensions: 18'3" x 17'7"  
Area: 256 sq. ft  
Counted as living area: Yes

Heated: Yes  
Finished: Yes  
Enclosed: Yes  
Contiguous: Yes  
Permitted: Yes  
Wet space: No  
Addition: No  
Conversion: No

31 Floor 3 - Hall



Dimensions: 7'6" x 5'7"  
Area: 42 sq. ft  
Counted as living area: Yes

Heated: Yes  
Finished: Yes  
Enclosed: Yes  
Contiguous: Yes  
Permitted: Yes  
Wet space: No  
Addition: No  
Conversion: No

32 Floor 3 - Hall



Dimensions: 9'8" x 22'1"  
Area: 187 sq. ft  
Counted as living area: Yes

Heated: Yes  
Finished: Yes  
Enclosed: Yes  
Contiguous: Yes  
Permitted: Yes  
Wet space: No  
Addition: No  
Conversion: No

33 Floor 3 - Bedroom



Dimensions: 18'3" x 13'11"  
Area: 255 sq. ft  
Counted as living area: Yes

Heated: Yes  
Finished: Yes  
Enclosed: Yes  
Contiguous: Yes  
Permitted: Yes  
Wet space: No  
Addition: No  
Conversion: No

34 Floor 3 - Balcony



Dimensions: 18'11" x 12'5"  
Area: 226 sq. ft  
Counted as living area: No

Heated: No  
Finished: No  
Enclosed: No  
Contiguous: Yes  
Permitted: Yes  
Wet space: No  
Addition: No  
Conversion: No

35 Floor 3 - Primary Bath



Dimensions: 14'10" x 18'4"  
Area: 183 sq. ft  
Counted as living area: Yes

Heated: Yes  
Finished: Yes  
Enclosed: Yes  
Contiguous: Yes  
Permitted: Yes  
Wet space: Yes  
Addition: No  
Conversion: No