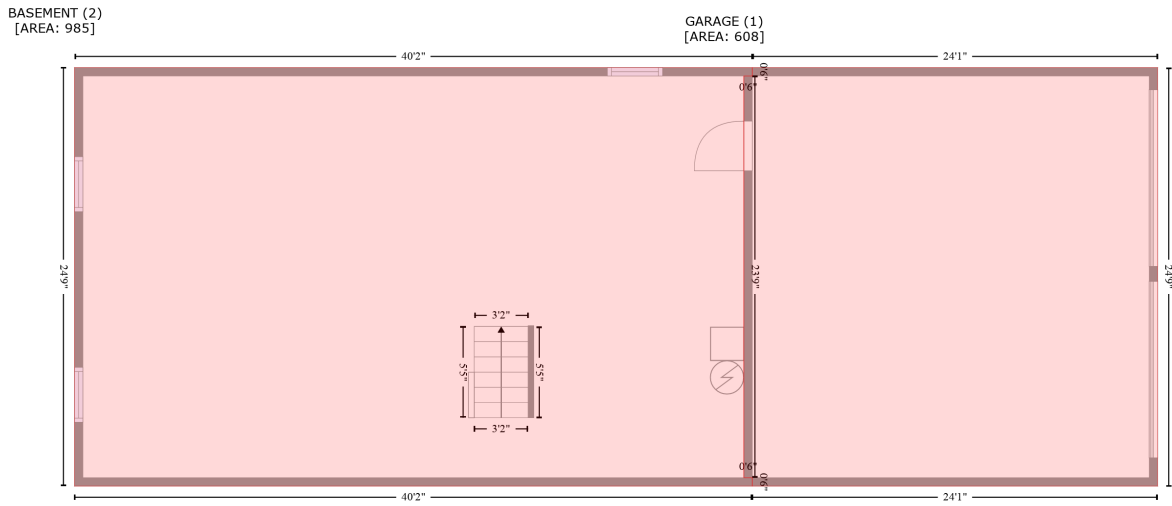


# 3 Kalen Circle, Milford, Worcester County, Massachusetts, United States, 01757

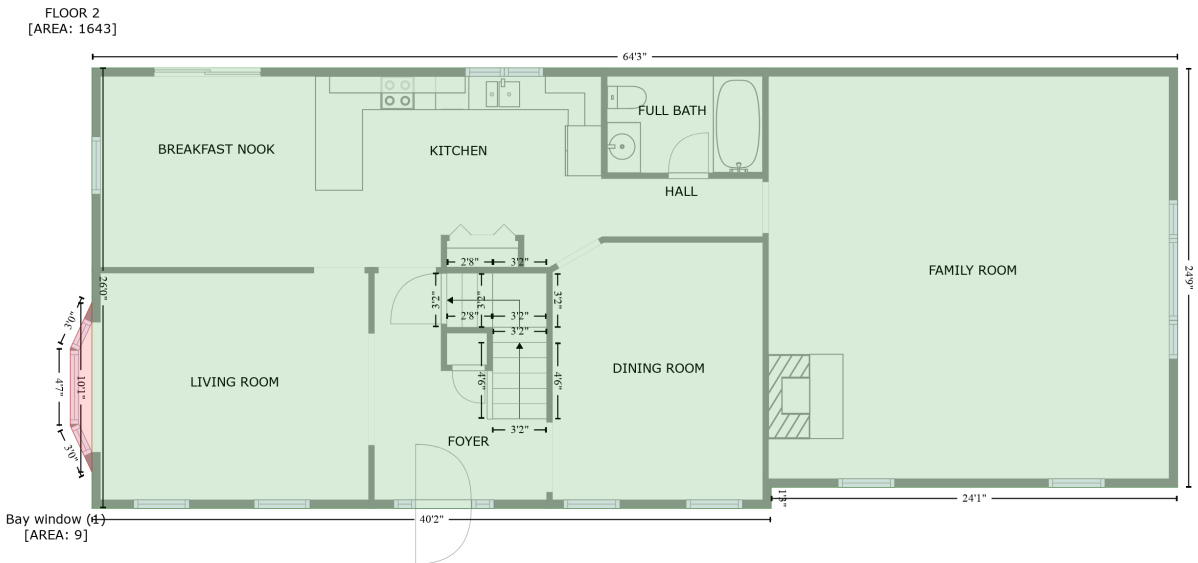
Gross Living Area: 2717 sq. ft



Space	Area (sq. ft)	Calculation <small>Coordinate Polygon Area Algorithm using inches</small>
GARAGE (Non-living area)	608	$-\left((778.4 + 778.4) * (124.4 - 421.9) + (778.4 + 489.8) * (421.9 - 421.9) + (489.8 + 489.8) * (421.9 - 415.9) + (489.8 + 483.8) * (415.9 - 415.9) + (483.8 + 483.8) * (415.9 - 130.4) + (483.8 + 489.8) * (130.4 - 130.4) + (489.8 + 489.8) * (130.4 - 124.4) + (489.8 + 778.4) * (124.4 - 124.4)\right) * 0.5 * 0.00694$
BASEMENT (Non-living area)	985	$-\left((489.8 + 489.8) * (124.4 - 130.4) + (489.8 + 483.8) * (130.4 - 130.4) + (483.8 + 483.8) * (130.4 - 415.9) + (483.8 + 489.8) * (415.9 - 415.9) + (489.8 + 489.8) * (415.9 - 421.9) + (489.8 + 7.3) * (421.9 - 421.9) + (7.3 + 7.3) * (421.9 - 124.4) + (7.3 + 489.8) * (124.4 - 124.4)\right) * 0.5 * 0.00694$

# 3 Kalen Circle, Milford, Worcester County, Massachusetts, United States, 01757

Gross Living Area: 2717 sq. ft

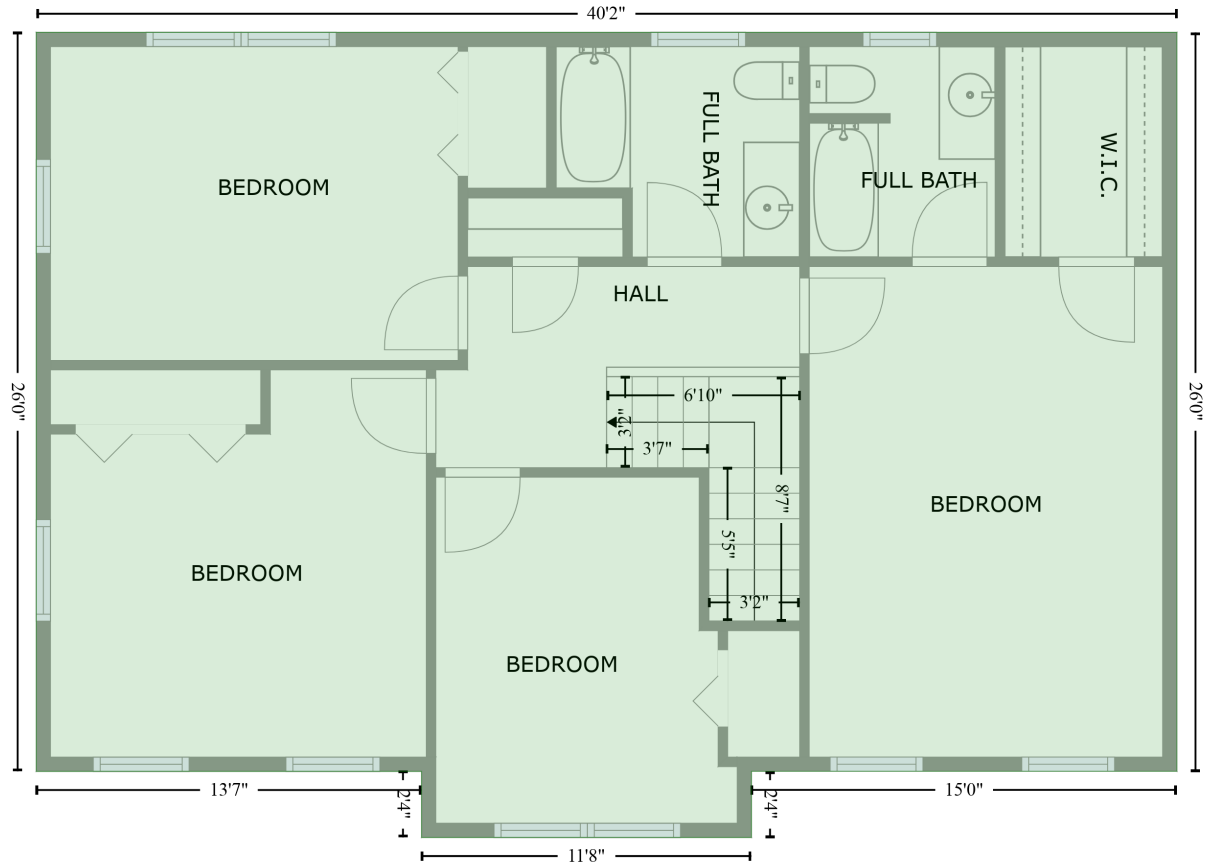


Space	Area (sq. ft)	Calculation <small>Coordinate Polygon Area Algorithm using inches</small>
FLOOR 2 (Living area)	1643	$-((784 + 784) * (124.4 - 421.9) + (784 + 495.4) * (421.9 - 421.9) + (495.4 + 495.4) * (421.9 - 436.8) + (495.4 + 12.9) * (436.8 - 436.8) + (12.9 + 12.9) * (436.8 - 124.4) + (12.9 + 784) * (124.4 - 124.4)) * 0.5 * 0.00694$
Bay window (Non-living area)	9	$-((12.9 + 12.9) * (290.7 - 411.2) + (12.9 + -2.5) * (411.2 - 378.4) + (-2.5 + -2.5) * (378.4 - 323.5) + (-2.5 + 12.9) * (323.5 - 290.7)) * 0.5 * 0.00694$

# 3 Kalen Circle, Milford, Worcester County, Massachusetts, United States, 01757

Gross Living Area: 2717 sq. ft

FLOOR 3  
[AREA: 1074]



Space	Area (sq. ft)	Calculation <small>Coordinate Polygon Area Algorithm using inches</small>
FLOOR 3 (Living area)	1074	$-((495.3 + 495.3) * (124.4 - 436.8) + (495.3 + 315.4) * (436.8 - 436.8) + (315.4 + 315.4) * (436.8 - 464.8) + (315.4 + 175.9) * (464.8 - 464.8) + (175.9 + 175.9) * (464.8 - 436.9) + (175.9 + 12.9) * (436.9 - 436.9) + (12.9 + 12.9) * (436.9 - 124.4) + (12.9 + 495.3) * (124.4 - 124.4)) * 0.5 * 0.00694$