



Total Area: 4638 sq. ft

Below Ground: 1287 sq. ft, 1st Floor: 1751 sq. ft, 2nd Floor: 1600 sq. ft

Excluded: Basement 349 sq. ft, Garage 699 sq. ft, Open to below 331 sq. ft, Walls: 330 sq. ft

Property summary



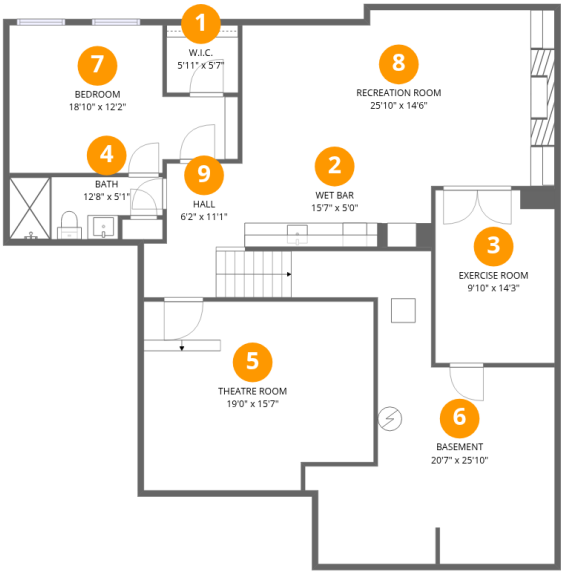


 **1**
Half baths

 **2**
Garages

Home data report

791 Wildrose Pl,Erie,CO,US



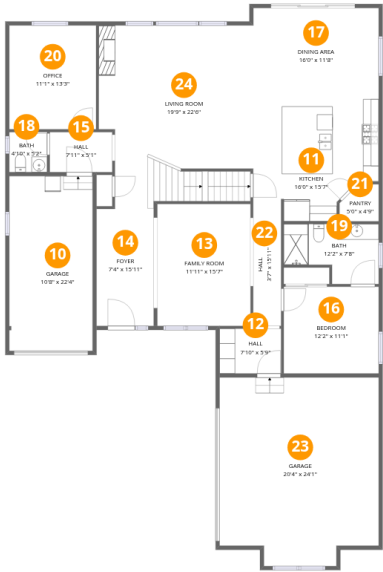
Room dimensions

Floor 1 Below grade Total:1287sqft Excluded: 349sqft

| # | | Dimensions | sqft | Counted as living area |
|---|-----------------|----------------|------------|------------------------|
| 1 | W.I.C. | 5'11" x 5'7" | 33 sq. ft | Yes |
| 2 | Wet Bar | 15'7" x 5'0" | 93 sq. ft | Yes |
| 3 | Exercise Room | 9'10" x 14'3" | 141 sq. ft | Yes |
| 4 | Bath | 12'8" x 5'1" | 58 sq. ft | Yes |
| 5 | Theatre Room | 19'0" x 15'7" | 282 sq. ft | Yes |
| 6 | Basement | 20'7" x 25'10" | 348 sq. ft | No |
| 7 | Bedroom | 18'10" x 12'2" | 187 sq. ft | Yes |
| 8 | Recreation Room | 25'10" x 14'6" | 362 sq. ft | Yes |
| 9 | Hall | 6'2" x 11'1" | 77 sq. ft | Yes |

Home data report

791 Wildrose Pl,Erie,CO,US



Room dimensions

Floor 2 Total:1751sqft Excluded: 699sqft

| # | | Dimensions | sqft | Counted as living area |
|----|-------------|----------------|------------|------------------------|
| 10 | Garage | 10'8" x 22'4" | 238 sq. ft | No |
| 11 | Kitchen | 16'0" x 15'7" | 216 sq. ft | Yes |
| 12 | Hall | 7'10" x 5'9" | 45 sq. ft | Yes |
| 13 | Family Room | 11'11" x 15'7" | 186 sq. ft | Yes |
| 14 | Foyer | 7'4" x 15'11" | 114 sq. ft | Yes |
| 15 | Hall | 7'11" x 5'1" | 41 sq. ft | Yes |
| 16 | Bedroom | 12'2" x 11'1" | 134 sq. ft | Yes |
| 17 | Dining Area | 16'0" x 11'8" | 187 sq. ft | Yes |
| 18 | Bath | 4'10" x 5'2" | 25 sq. ft | Yes |
| 19 | Bath | 12'2" x 7'8" | 78 sq. ft | Yes |
| 20 | Office | 11'1" x 13'3" | 147 sq. ft | Yes |

Home data report

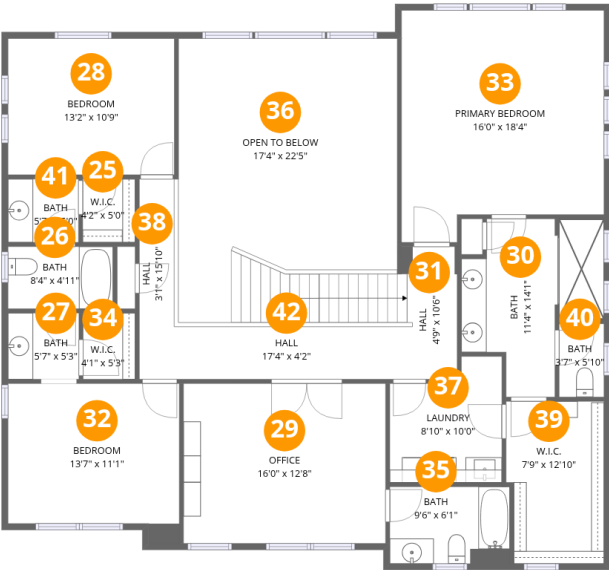
791 Wildrose Pl,Erie,CO,US



| # | | Dimensions | sqft | Counted as living area |
|----|-------------|---------------|------------|------------------------|
| 21 | Pantry | 5'0" x 4'9" | 21 sq. ft | Yes |
| 22 | Hall | 3'7" x 15'11" | 57 sq. ft | Yes |
| 23 | Garage | 20'4" x 24'1" | 461 sq. ft | No |
| 24 | Living Room | 19'9" x 22'6" | 420 sq. ft | Yes |

Home data report

791 Wildrose Pl,Erie,CO,US



Room dimensions

Floor 3 Total:1600sqft Excluded: 331sqft

| # | | Dimensions | sqft | Counted as living area |
|----|-----------------|---------------|------------|------------------------|
| 25 | W.I.C. | 4'2" x 5'0" | 21 sq. ft | Yes |
| 26 | Bath | 8'4" x 4'11" | 41 sq. ft | Yes |
| 27 | Bath | 5'7" x 5'3" | 29 sq. ft | Yes |
| 28 | Bedroom | 13'2" x 10'9" | 142 sq. ft | Yes |
| 29 | Office | 16'0" x 12'8" | 203 sq. ft | Yes |
| 30 | Bath | 11'4" x 14'1" | 116 sq. ft | Yes |
| 31 | Hall | 4'9" x 10'6" | 49 sq. ft | Yes |
| 32 | Bedroom | 13'7" x 11'1" | 154 sq. ft | Yes |
| 33 | Primary Bedroom | 16'0" x 18'4" | 269 sq. ft | Yes |
| 34 | W.I.C. | 4'1" x 5'3" | 22 sq. ft | Yes |
| 35 | Bath | 9'6" x 6'1" | 58 sq. ft | Yes |

Home data report

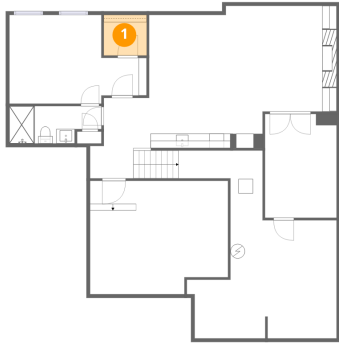
791 Wildrose Pl,Erie,CO,US



| # | | Dimensions | sqft | Counted as living area |
|----|---------------|---------------|------------|------------------------|
| 36 | Open To Below | 17'4" x 22'5" | 330 sq. ft | No |
| 37 | Laundry | 8'10" x 10'0" | 76 sq. ft | Yes |
| 38 | Hall | 3'1" x 15'10" | 49 sq. ft | Yes |
| 39 | W.I.C. | 7'9" x 12'10" | 96 sq. ft | Yes |
| 40 | Bath | 3'7" x 5'10" | 21 sq. ft | Yes |
| 41 | Bath | 5'7" x 5'0" | 28 sq. ft | Yes |
| 42 | Hall | 17'4" x 4'2" | 137 sq. ft | Yes |



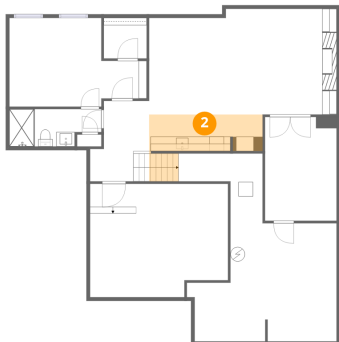
1 Floor 1 - W.I.C.



Dimensions: 5'11" x 5'7"
Area: 33 sq. ft
Counted as living area: Yes

Heated: Yes
Finished: Yes
Enclosed: Yes
Contiguous: Yes
Permitted: Yes
Wet space: No
Addition: No
Conversion: No

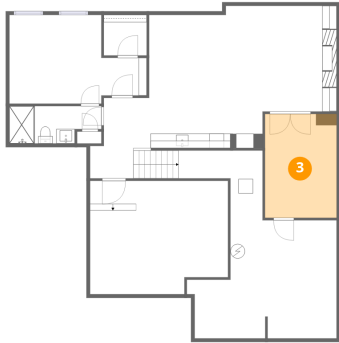
2 Floor 1 - Wet Bar



Dimensions: 15'7" x 5'0"
Area: 93 sq. ft
Counted as living area: Yes

Heated: Yes
Finished: Yes
Enclosed: Yes
Contiguous: Yes
Permitted: Yes
Wet space: No
Addition: No
Conversion: No

3 Floor 1 - Exercise Room



Dimensions: 9'10" x 14'3"
Area: 141 sq. ft
Counted as living area: Yes

Heated: Yes
Finished: Yes
Enclosed: Yes
Contiguous: Yes
Permitted: Yes
Wet space: No
Addition: No
Conversion: No

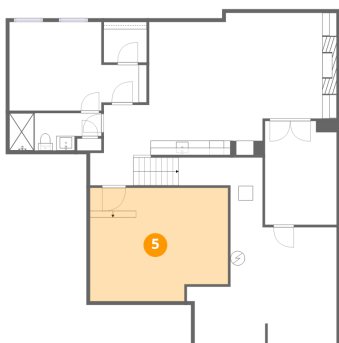
4 Floor 1 - Bath



Dimensions: 12'8" x 5'1"
Area: 58 sq. ft
Counted as living area: Yes

Heated: Yes
Finished: Yes
Enclosed: Yes
Contiguous: Yes
Permitted: Yes
Wet space: Yes
Addition: No
Conversion: No

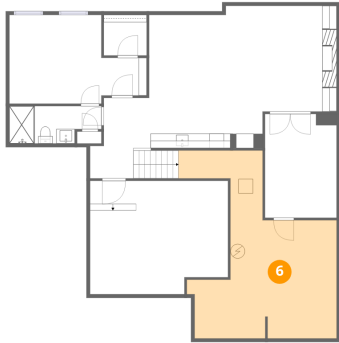
5 Floor 1 - Theatre Room



Dimensions: 19'0" x 15'7"
Area: 282 sq. ft
Counted as living area: Yes

Heated: Yes
Finished: Yes
Enclosed: Yes
Contiguous: Yes
Permitted: Yes
Wet space: No
Addition: No
Conversion: No

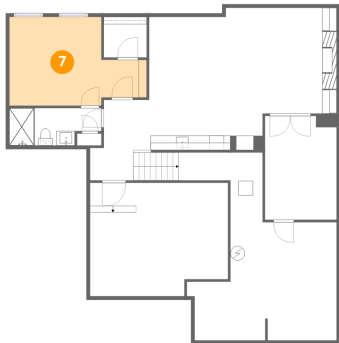
6 Floor 1 - Basement



Dimensions: 20'7" x 25'10"
Area: 348 sq. ft
Counted as living area: No

Heated: Yes
Finished: No
Enclosed: Yes
Contiguous: Yes
Permitted: Yes
Wet space: No
Addition: No
Conversion: No

7 Floor 1 - Bedroom



Dimensions: 18'10" x 12'2"
Area: 187 sq. ft
Counted as living area: Yes

Heated: Yes
Finished: Yes
Enclosed: Yes
Contiguous: Yes
Permitted: Yes
Wet space: No
Addition: No
Conversion: No

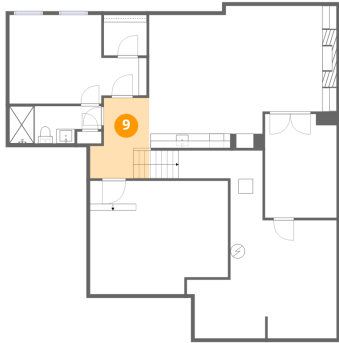
8 Floor 1 - Recreation Room



Dimensions: 25'10" x 14'6"
Area: 362 sq. ft
Counted as living area: Yes

Heated: Yes
Finished: Yes
Enclosed: Yes
Contiguous: Yes
Permitted: Yes
Wet space: No
Addition: No
Conversion: No

9 Floor 1 - Hall



Dimensions: 6'2" x 11'1"
Area: 77 sq. ft
Counted as living area: Yes

Heated: Yes
Finished: Yes
Enclosed: Yes
Contiguous: Yes
Permitted: Yes
Wet space: No
Addition: No
Conversion: No

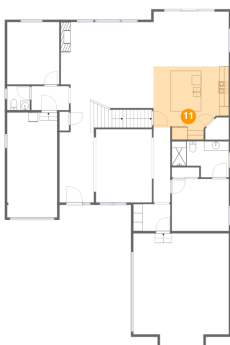
10 Floor 2 - Garage



Dimensions: 10'8" x 22'4"
Area: 238 sq. ft
Counted as living area: No

Heated: No
Finished: No
Enclosed: Yes
Contiguous: Yes
Permitted: Yes
Wet space: No
Addition: No
Conversion: No

11 Floor 2 - Kitchen



Dimensions: 16'0" x 15'7"
Area: 216 sq. ft
Counted as living area: Yes

Heated: Yes
Finished: Yes
Enclosed: Yes
Contiguous: Yes
Permitted: Yes
Wet space: No
Addition: No
Conversion: No

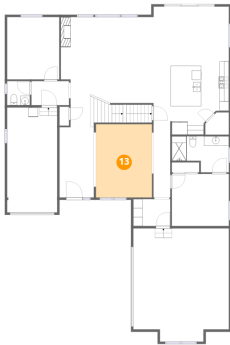
12 Floor 2 - Hall



Dimensions: 7'10" x 5'9"
Area: 45 sq. ft
Counted as living area: Yes

Heated: Yes
Finished: Yes
Enclosed: Yes
Contiguous: Yes
Permitted: Yes
Wet space: No
Addition: No
Conversion: No

13 Floor 2 - Family Room



Dimensions: 11'11" x 15'7"
Area: 186 sq. ft
Counted as living area: Yes

Heated: Yes
Finished: Yes
Enclosed: Yes
Contiguous: Yes
Permitted: Yes
Wet space: No
Addition: No
Conversion: No

14 Floor 2 - Foyer



Dimensions: 7'4" x 15'11"
Area: 114 sq. ft
Counted as living area: Yes

Heated: Yes
Finished: Yes
Enclosed: Yes
Contiguous: Yes
Permitted: Yes
Wet space: No
Addition: No
Conversion: No

15 Floor 2 - Hall



Dimensions: 7'11" x 5'1"
Area: 41 sq. ft
Counted as living area: Yes

Heated: Yes
Finished: Yes
Enclosed: Yes
Contiguous: Yes
Permitted: Yes
Wet space: No
Addition: No
Conversion: No

16 Floor 2 - Bedroom



Dimensions: 12'2" x 11'1"
Area: 134 sq. ft
Counted as living area: Yes

Heated: Yes
Finished: Yes
Enclosed: Yes
Contiguous: Yes
Permitted: Yes
Wet space: No
Addition: No
Conversion: No

17 Floor 2 - Dining Area



Dimensions: 16'0" x 11'8"
Area: 187 sq. ft
Counted as living area: Yes

Heated: Yes
Finished: Yes
Enclosed: Yes
Contiguous: Yes
Permitted: Yes
Wet space: No
Addition: No
Conversion: No

18 Floor 2 - Bath



Dimensions: 4'10" x 5'2"
Area: 25 sq. ft
Counted as living area: Yes

Heated: Yes
Finished: Yes
Enclosed: Yes
Contiguous: Yes
Permitted: Yes
Wet space: Yes
Addition: No
Conversion: No

19 Floor 2 - Bath



Dimensions: 12'2" x 7'8"
Area: 78 sq. ft
Counted as living area: Yes

Heated: Yes
Finished: Yes
Enclosed: Yes
Contiguous: Yes
Permitted: Yes
Wet space: Yes
Addition: No
Conversion: No

20 Floor 2 - Office



Dimensions: 11'1" x 13'3"
Area: 147 sq. ft
Counted as living area: Yes

Heated: Yes
Finished: Yes
Enclosed: Yes
Contiguous: Yes
Permitted: Yes
Wet space: No
Addition: No
Conversion: No

21 Floor 2 - Pantry



Dimensions: 5'0" x 4'9"
Area: 21 sq. ft
Counted as living area: Yes

Heated: Yes
Finished: Yes
Enclosed: Yes
Contiguous: Yes
Permitted: Yes
Wet space: No
Addition: No
Conversion: No

22 Floor 2 - Hall



Dimensions: 3'7" x 15'11"
Area: 57 sq. ft
Counted as living area: Yes

Heated: Yes
Finished: Yes
Enclosed: Yes
Contiguous: Yes
Permitted: Yes
Wet space: No
Addition: No
Conversion: No

23 Floor 2 - Garage



Dimensions: 20'4" x 24'1"
Area: 461 sq. ft
Counted as living area: No

Heated: No
Finished: No
Enclosed: Yes
Contiguous: Yes
Permitted: Yes
Wet space: No
Addition: No
Conversion: No

24 Floor 2 - Living Room



Dimensions: 19'9" x 22'6"
Area: 420 sq. ft
Counted as living area: Yes

Heated: Yes
Finished: Yes
Enclosed: Yes
Contiguous: Yes
Permitted: Yes
Wet space: No
Addition: No
Conversion: No

25 Floor 3 - W.I.C.



Dimensions: 4'2" x 5'0"
Area: 21 sq. ft
Counted as living area: Yes

Heated: Yes
Finished: Yes
Enclosed: Yes
Contiguous: Yes
Permitted: Yes
Wet space: No
Addition: No
Conversion: No

26 Floor 3 - Bath



Dimensions: 8'4" x 4'11"
Area: 41 sq. ft
Counted as living area: Yes

Heated: Yes
Finished: Yes
Enclosed: Yes
Contiguous: Yes
Permitted: Yes
Wet space: Yes
Addition: No
Conversion: No

27 Floor 3 - Bath



Dimensions: 5'7" x 5'3"
Area: 29 sq. ft
Counted as living area: Yes

Heated: Yes
Finished: Yes
Enclosed: Yes
Contiguous: Yes
Permitted: Yes
Wet space: Yes
Addition: No
Conversion: No

28 Floor 3 - Bedroom



Dimensions: 13'2" x 10'9"
Area: 142 sq. ft
Counted as living area: Yes

Heated: Yes
Finished: Yes
Enclosed: Yes
Contiguous: Yes
Permitted: Yes
Wet space: No
Addition: No
Conversion: No

29 Floor 3 - Office



Dimensions: 16'0" x 12'8"
Area: 203 sq. ft
Counted as living area: Yes

Heated: Yes
Finished: Yes
Enclosed: Yes
Contiguous: Yes
Permitted: Yes
Wet space: No
Addition: No
Conversion: No

30 Floor 3 - Bath



Dimensions: 11'4" x 14'1"
Area: 116 sq. ft
Counted as living area: Yes

Heated: Yes
Finished: Yes
Enclosed: Yes
Contiguous: Yes
Permitted: Yes
Wet space: Yes
Addition: No
Conversion: No

31 Floor 3 - Hall



Dimensions: 4'9" x 10'6"
Area: 49 sq. ft
Counted as living area: Yes

Heated: Yes
Finished: Yes
Enclosed: Yes
Contiguous: Yes
Permitted: Yes
Wet space: No
Addition: No
Conversion: No

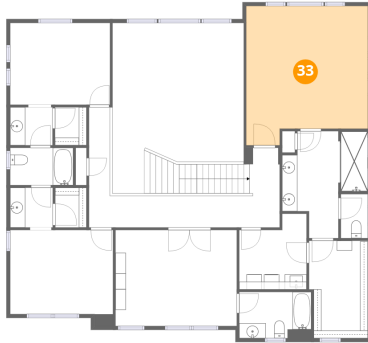
32 Floor 3 - Bedroom



Dimensions: 13'7" x 11'1"
Area: 154 sq. ft
Counted as living area: Yes

Heated: Yes
Finished: Yes
Enclosed: Yes
Contiguous: Yes
Permitted: Yes
Wet space: No
Addition: No
Conversion: No

33 Floor 3 - Primary Bedroom



Dimensions: 16'0" x 18'4"
Area: 269 sq. ft
Counted as living area: Yes

Heated: Yes
Finished: Yes
Enclosed: Yes
Contiguous: Yes
Permitted: Yes
Wet space: No
Addition: No
Conversion: No

34 Floor 3 - W.I.C.



Dimensions: 4'1" x 5'3"
Area: 22 sq. ft
Counted as living area: Yes

Heated: Yes
Finished: Yes
Enclosed: Yes
Contiguous: Yes
Permitted: Yes
Wet space: No
Addition: No
Conversion: No

35 Floor 3 - Bath



Dimensions: 9'6" x 6'1"
Area: 58 sq. ft
Counted as living area: Yes

Heated: Yes
Finished: Yes
Enclosed: Yes
Contiguous: Yes
Permitted: Yes
Wet space: Yes
Addition: No
Conversion: No

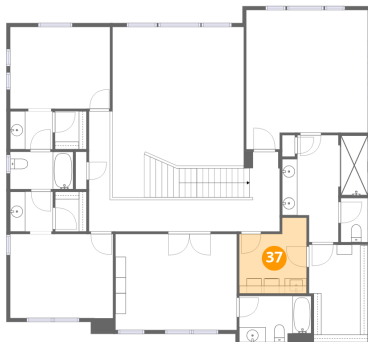
36 Floor 3 - Open To Below



Dimensions: 17'4" x 22'5"
Area: 330 sq. ft
Counted as living area: No

Heated: No
Finished: No
Enclosed: No
Contiguous: Yes
Permitted: No
Wet space: No
Addition: No
Conversion: No

37 Floor 3 - Laundry



Dimensions: 8'10" x 10'0"
Area: 76 sq. ft
Counted as living area: Yes

Heated: Yes
Finished: Yes
Enclosed: Yes
Contiguous: Yes
Permitted: Yes
Wet space: No
Addition: No
Conversion: No

38 Floor 3 - Hall



Dimensions: 3'1" x 15'10"
Area: 49 sq. ft
Counted as living area: Yes

Heated: Yes
Finished: Yes
Enclosed: Yes
Contiguous: Yes
Permitted: Yes
Wet space: No
Addition: No
Conversion: No

39 Floor 3 - W.I.C.



Dimensions: 7'9" x 12'10"
Area: 96 sq. ft
Counted as living area: Yes

Heated: Yes
Finished: Yes
Enclosed: Yes
Contiguous: Yes
Permitted: Yes
Wet space: No
Addition: No
Conversion: No

40 Floor 3 - Bath



Dimensions: 3'7" x 5'10"
Area: 21 sq. ft
Counted as living area: Yes

Heated: Yes
Finished: Yes
Enclosed: Yes
Contiguous: Yes
Permitted: Yes
Wet space: Yes
Addition: No
Conversion: No

41 Floor 3 - Bath

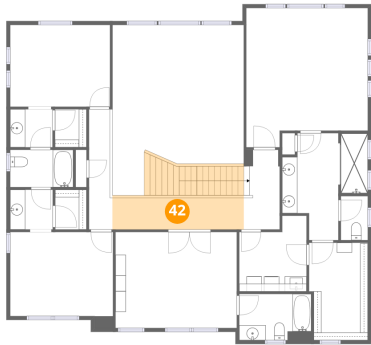


Dimensions: 5'7" x 5'0"
Area: 28 sq. ft
Counted as living area: Yes

Heated: Yes
Finished: Yes
Enclosed: Yes
Contiguous: Yes
Permitted: Yes
Wet space: Yes
Addition: No
Conversion: No



42 Floor 3 - Hall



Dimensions: 17'4" x 4'2"
Area: 137 sq. ft
Counted as living area: Yes

Heated: Yes
Finished: Yes
Enclosed: Yes
Contiguous: Yes
Permitted: Yes
Wet space: No
Addition: No
Conversion: No