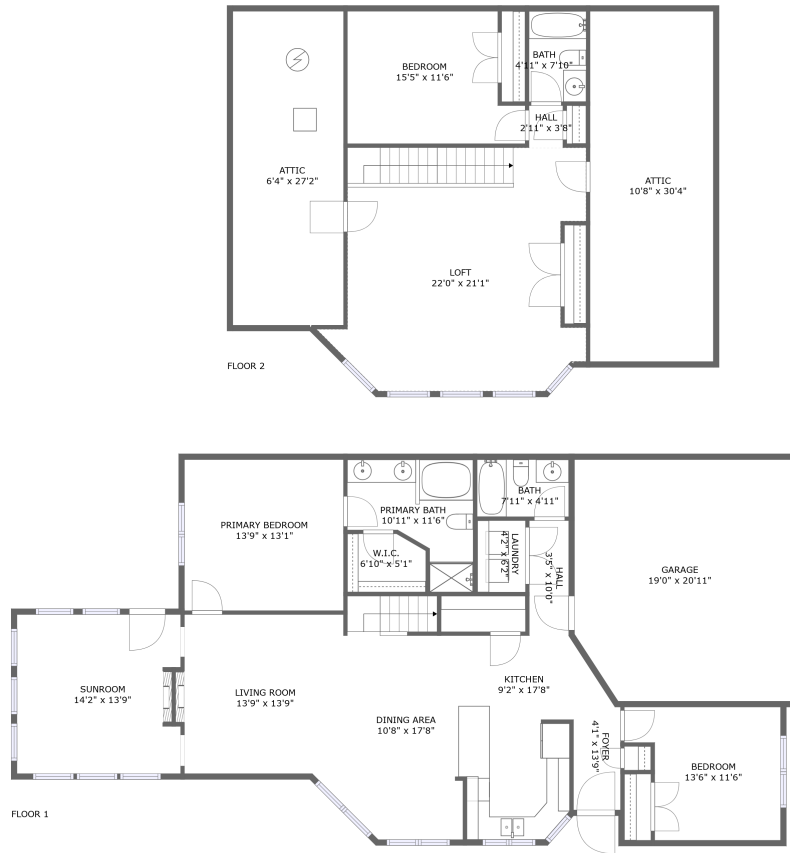



654 Nikyle Circle, High Point, Guilford County, North Carolina, United States, 27265



Property summary


 **1** Garages

 **3** Bedrooms

 **3** Bathrooms

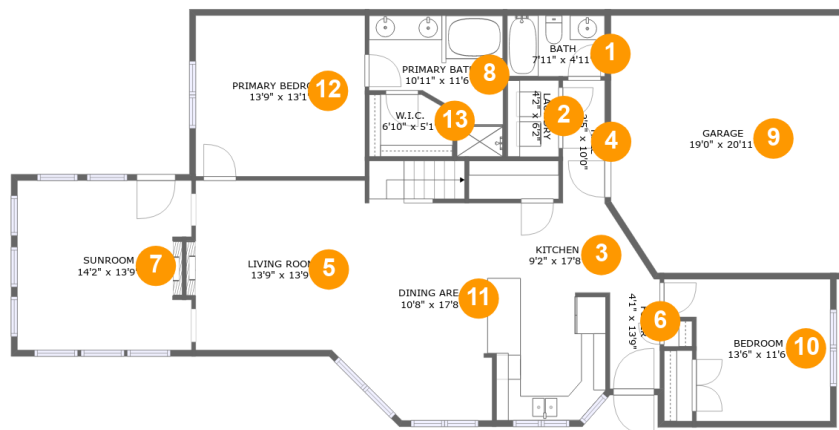
 **0** Half baths

 **2** Floors

 **2,224** Gross living area sqft

 **3,255** Total sqft

654 Nikyle Circle, High Point, Guilford County, North Carolina, United States, 27265



Room dimensions

Floor 1

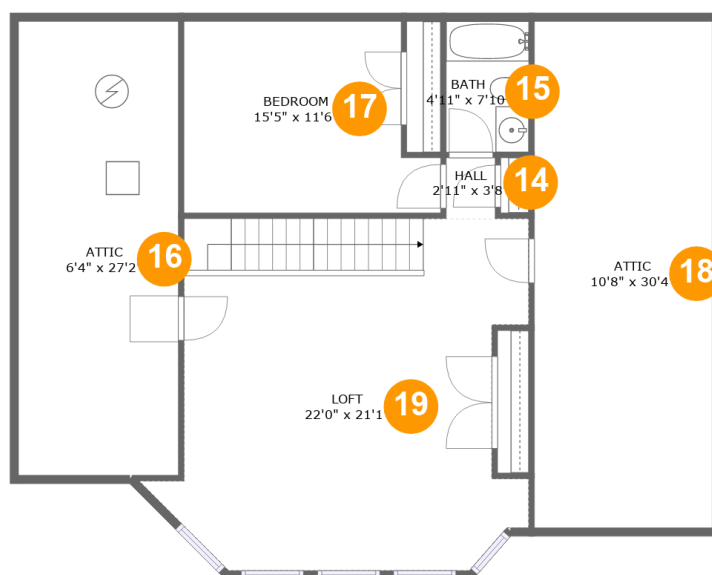
Total sqft: 1914 Living area: 1511

#		Dimensions	sqft	Counted as living area
1	Bath	7'11" x 4'11"	39 sq. ft	Yes
2	Laundry	4'2" x 6'2"	26 sq. ft	Yes
3	Kitchen	9'2" x 17'8"	156 sq. ft	Yes
4	Hall	3'5" x 10'0"	34 sq. ft	Yes
5	Living Room	13'9" x 13'9"	197 sq. ft	Yes
6	Foyer	4'1" x 13'9"	46 sq. ft	Yes
7	Sunroom	14'2" x 13'9"	191 sq. ft	Yes
8	Primary Bath	10'11" x 11'6"	89 sq. ft	Yes
9	Garage	19'0" x 20'11"	387 sq. ft	No
10	Bedroom	13'6" x 11'6"	134 sq. ft	Yes
11	Dining Area	10'8" x 17'8"	208 sq. ft	Yes

654 Nikyle Circle, High Point, Guilford County, North Carolina, United States, 27265

#		Dimensions	sqft	Counted as living area
12	Primary Bedroom	13'9" x 13'1"	180 sq. ft	Yes
13	W.I.C.	6'10" x 5'1"	32 sq. ft	Yes

654 Nikyle Circle, High Point, Guilford County, North Carolina, United States, 27265



Room dimensions

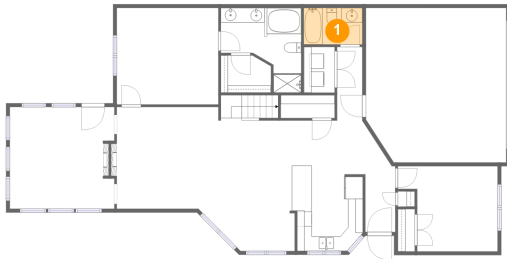
Floor 2

Total sqft: 1341 Living area: 713

#		Dimensions	sqft	Counted as living area
14	Hall	2'11" x 3'8"	11 sq. ft	Yes
15	Bath	4'11" x 7'10"	39 sq. ft	Yes
16	Attic	6'4" x 27'2"	94 sq. ft	No
17	Bedroom	15'5" x 11'6"	157 sq. ft	Yes
18	Attic	10'8" x 30'4"	128 sq. ft	No
19	Loft	22'0" x 21'1"	410 sq. ft	Yes

654 Nikyle Circle, High Point, Guilford County, North Carolina, United States, 27265

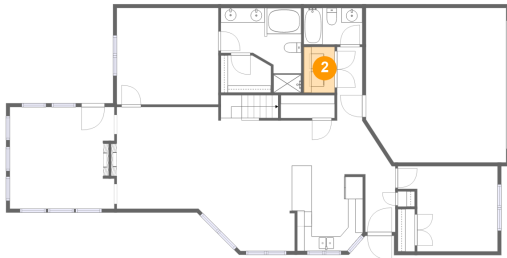
1 Floor 1 - Bath



Dimensions: 7'11" x 4'11"
Area: 39 sq. ft
Counted as living area: Yes

Heated: Yes
Finished: Yes
Enclosed: Yes
Contiguous: Yes
Permitted: Yes
Wet space: Yes
Addition: No
Conversion: No

2 Floor 1 - Laundry



Dimensions: 4'2" x 6'2"
Area: 26 sq. ft
Counted as living area: Yes

Heated: Yes
Finished: Yes
Enclosed: Yes
Contiguous: Yes
Permitted: Yes
Wet space: No
Addition: No
Conversion: No

654 Nikyle Circle, High Point, Guilford County, North Carolina, United States, 27265

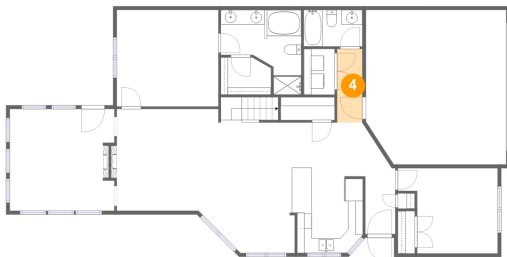
3 Floor 1 - Kitchen



Dimensions: 9'2" x 17'8"
Area: 156 sq. ft
Counted as living area: Yes

Heated: Yes
Finished: Yes
Enclosed: Yes
Contiguous: Yes
Permitted: Yes
Wet space: No
Addition: No
Conversion: No

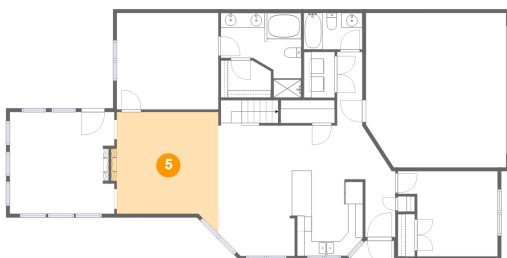
4 Floor 1 - Hall



Dimensions: 3'5" x 10'0"
Area: 34 sq. ft
Counted as living area: Yes

Heated: Yes
Finished: Yes
Enclosed: Yes
Contiguous: Yes
Permitted: Yes
Wet space: No
Addition: No
Conversion: No

5 Floor 1 - Living Room

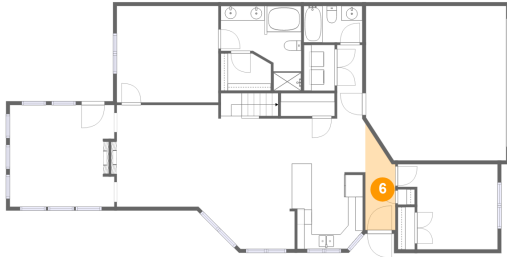


Dimensions: 13'9" x 13'9"
Area: 197 sq. ft
Counted as living area: Yes

Heated: Yes
Finished: Yes
Enclosed: Yes
Contiguous: Yes
Permitted: Yes
Wet space: No
Addition: No
Conversion: No

654 Nikyle Circle, High Point, Guilford County, North Carolina, United States, 27265

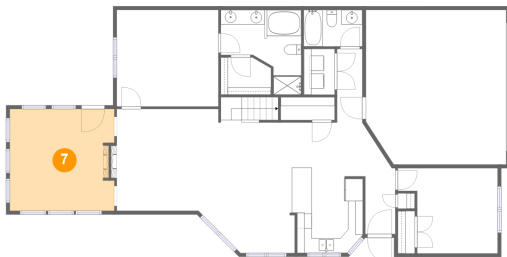
6 Floor 1 - Foyer



Dimensions: 4'1" x 13'9"
Area: 46 sq. ft
Counted as living area: Yes

Heated: Yes
Finished: Yes
Enclosed: Yes
Contiguous: Yes
Permitted: Yes
Wet space: No
Addition: No
Conversion: No

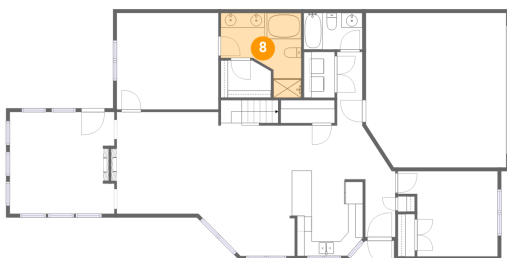
7 Floor 1 - Sunroom



Dimensions: 14'2" x 13'9"
Area: 191 sq. ft
Counted as living area: Yes

Heated: Yes
Finished: Yes
Enclosed: Yes
Contiguous: Yes
Permitted: Yes
Wet space: No
Addition: No
Conversion: No

8 Floor 1 - Primary Bath

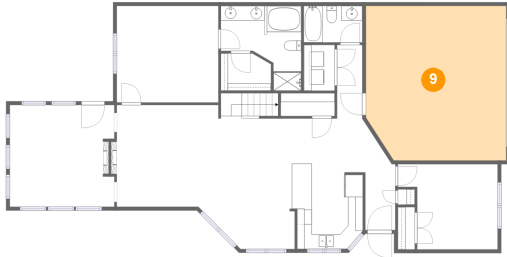


Dimensions: 10'11" x 11'6"
Area: 89 sq. ft
Counted as living area: Yes

Heated: Yes
Finished: Yes
Enclosed: Yes
Contiguous: Yes
Permitted: Yes
Wet space: Yes
Addition: No
Conversion: No

654 Nikyle Circle, High Point, Guilford County, North Carolina, United States, 27265

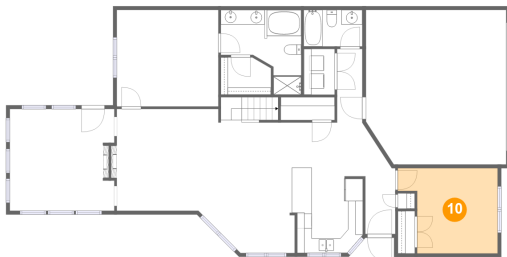
9 Floor 1 - Garage



Dimensions: 19'0" x 20'11"
Area: 387 sq. ft
Counted as living area: No

Heated: No
Finished: No
Enclosed: Yes
Contiguous: Yes
Permitted: Yes
Wet space: No
Addition: No
Conversion: No

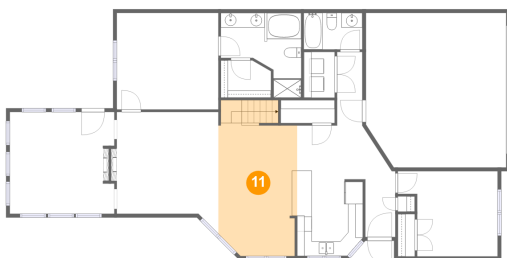
10 Floor 1 - Bedroom



Dimensions: 13'6" x 11'6"
Area: 134 sq. ft
Counted as living area: Yes

Heated: Yes
Finished: Yes
Enclosed: Yes
Contiguous: Yes
Permitted: Yes
Wet space: No
Addition: No
Conversion: No

11 Floor 1 - Dining Area

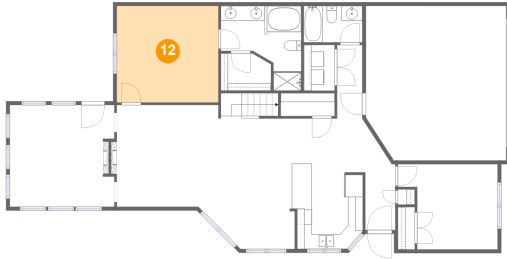


Dimensions: 10'8" x 17'8"
Area: 208 sq. ft
Counted as living area: Yes

Heated: Yes
Finished: Yes
Enclosed: Yes
Contiguous: Yes
Permitted: Yes
Wet space: No
Addition: No
Conversion: No

654 Nikyle Circle, High Point, Guilford County, North Carolina, United States, 27265

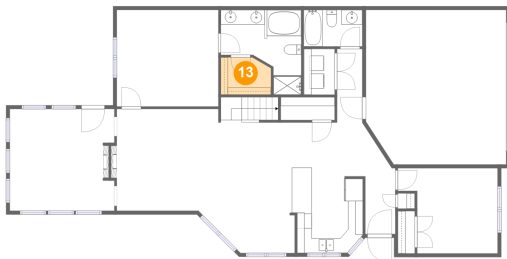
12 Floor 1 - Primary Bedroom



Dimensions: 13'9" x 13'1"
Area: 180 sq. ft
Counted as living area: Yes

Heated: Yes
Finished: Yes
Enclosed: Yes
Contiguous: Yes
Permitted: Yes
Wet space: No
Addition: No
Conversion: No

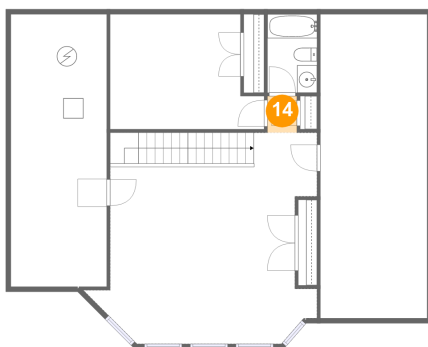
13 Floor 1 - W.I.C.



Dimensions: 6'10" x 5'1"
Area: 32 sq. ft
Counted as living area: Yes

Heated: Yes
Finished: Yes
Enclosed: Yes
Contiguous: Yes
Permitted: Yes
Wet space: No
Addition: No
Conversion: No

14 Floor 2 - Hall

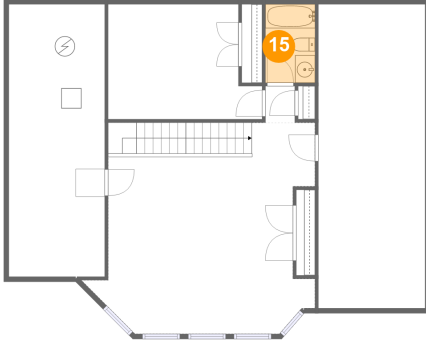


Dimensions: 2'11" x 3'8"
Area: 11 sq. ft
Counted as living area: Yes

Heated: Yes
Finished: Yes
Enclosed: Yes
Contiguous: Yes
Permitted: Yes
Wet space: No
Addition: No
Conversion: No

654 Nikyle Circle, High Point, Guilford County, North Carolina, United States, 27265

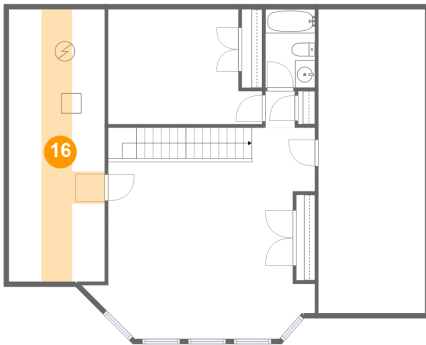
15 Floor 2 - Bath



Dimensions: 4'11" x 7'10"
Area: 39 sq. ft
Counted as living area: Yes

Heated: Yes
Finished: Yes
Enclosed: Yes
Contiguous: Yes
Permitted: Yes
Wet space: Yes
Addition: No
Conversion: No

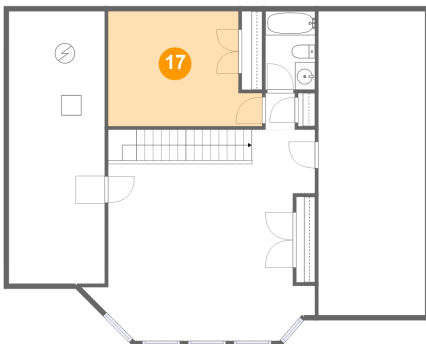
16 Floor 2 - Attic



Dimensions: 6'4" x 27'2"
Area: 94 sq. ft
Counted as living area: No

Heated: No
Finished: No
Enclosed: Yes
Contiguous: Yes
Permitted: Yes
Wet space: No
Addition: No
Conversion: No

17 Floor 2 - Bedroom

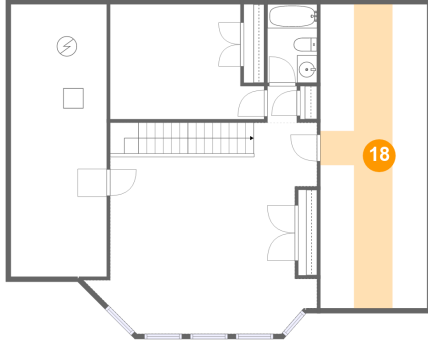


Dimensions: 15'5" x 11'6"
Area: 157 sq. ft
Counted as living area: Yes

Heated: Yes
Finished: Yes
Enclosed: Yes
Contiguous: Yes
Permitted: Yes
Wet space: No
Addition: No
Conversion: No

654 Nikyle Circle, High Point, Guilford County, North Carolina, United States, 27265

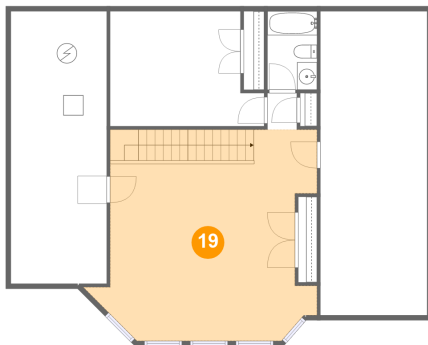
18 Floor 2 - Attic



Dimensions: 10'8" x 30'4"
Area: 128 sq. ft
Counted as living area: No

Heated: No
Finished: No
Enclosed: Yes
Contiguous: Yes
Permitted: Yes
Wet space: No
Addition: No
Conversion: No

19 Floor 2 - Loft



Dimensions: 22'0" x 21'1"
Area: 410 sq. ft
Counted as living area: Yes

Heated: Yes
Finished: Yes
Enclosed: Yes
Contiguous: Yes
Permitted: Yes
Wet space: No
Addition: No
Conversion: No