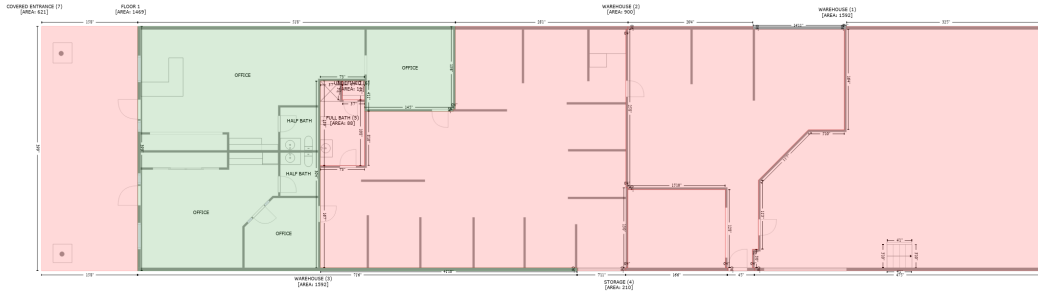


300 King Oak Street, Trenton, Clinton County, Illinois, United States, 62293

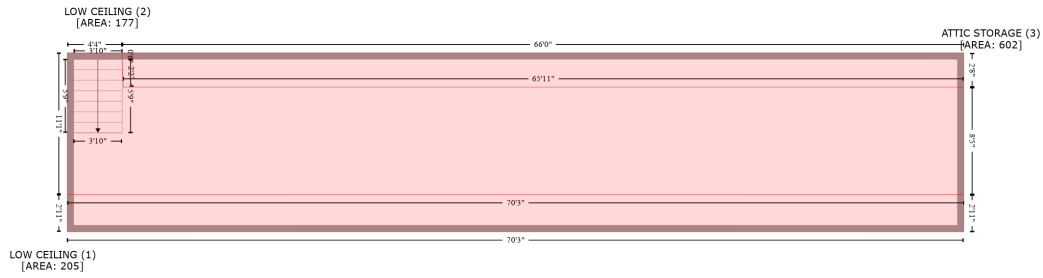
Gross Living Area: 1469 sq. ft



Space	Area (sq. ft)	Calculation
FLOOR 1 (Living area)	1469	$-(942.4 + 942.4) * (119 - 280.6) + (942.4 + 938.4) * (280.6 - 280.6) + (938.4 + 938.4) * (280.6 - 284.6) + (938.4 + 765.3) * (284.6 - 284.6) + (765.3 + 765.3) * (284.6 - 225.3) + (765.3 + 678.7) * (225.3 - 225.3) + (678.7 + 678.7) * (225.3 - 589.6) + (678.7 + 1180.4) * (589.6 - 589.6) + (1180.4 + 1180.4) * (589.6 - 595.6) + (1180.4 + 322) * (595.6 - 595.6) + (322 + 322) * (595.6 - 119) + (322 + 942.4) * (119 - 119) * 0.5 * 0.00694$
WAREHOUSE (Non-living area)	1592	$-(2095.4 + 2095.4) * (119 - 595.6) + (2095.4 + 1526.7) * (595.6 - 595.6) + (1526.7 + 1526.7) * (595.6 - 589.6) + (1526.7 + 1522.7) * (589.6 - 589.6) + (1522.7 + 1522.7) * (589.6 - 553.5) + (1522.7 + 1534.3) * (553.5 - 553.5) + (1534.3 + 1534.3) * (553.5 - 418.9) + (1534.3 + 1632) * (418.9 - 320.6) + (1632 + 1702.2) * (320.6 - 320.6) + (1702.2 + 1702.2) * (320.6 - 125) + (1702.2 + 1706.2) * (125 - 125) + (1706.2 + 1706.2) * (125 - 119) + (1706.2 + 2095.4) * (119 - 119) * 0.5 * 0.00694$
WAREHOUSE (Non-living area)	900	$-(1523.5 + 1523.5) * (119 - 125) + (1523.5 + 1702.2) * (125 - 125) + (1702.2 + 1702.2) * (125 - 320.6) + (1702.2 + 1632) * (320.6 - 320.6) + (1632 + 1534.3) * (320.6 - 418.9) + (1534.3 + 1534.3) * (418.9 - 553.5) + (1534.3 + 1522.7) * (553.5 - 553.5) + (1522.7 + 1522.7) * (553.5 - 589.6) + (1522.7 + 1526.7) * (589.6 - 589.6) + (1526.7 + 1526.7) * (589.6 - 595.6) + (1526.7 + 1473.7) * (595.6 - 595.6) + (1473.7 + 1473.7) * (595.6 - 589.6) + (1473.7 + 1469.7) * (589.6 - 589.6) + (1469.7 + 1469.7) * (589.6 - 437.1) + (1469.7 + 1279.5) * (437.1 - 437.1) + (1279.5 + 1279.5) * (437.1 - 433.1) + (1279.5 + 1275.5) * (433.1 - 433.1) + (1275.5 + 1275.5) * (433.1 - 125) + (1275.5 + 1279.5) * (125 - 125) + (1279.5 + 1279.5) * (125 - 119) + (1279.5 + 1523.5) * (119 - 119) * 0.5 * 0.00694$
WAREHOUSE (Non-living area)	1592	$-(1279.5 + 1279.5) * (119 - 125) + (1279.5 + 1275.5) * (125 - 125) + (1275.5 + 1275.5) * (125 - 433.1) + (1275.5 + 1279.5) * (433.1 - 433.1) + (1279.5 + 1279.5) * (433.1 - 589.6) + (1279.5 + 1275.5) * (589.6 - 589.6) + (1275.5 + 1275.5) * (589.6 - 595.6) + (1275.5 + 1180.4) * (595.6 - 595.6) + (1180.4 + 1180.4) * (595.6 - 589.6) + (1180.4 + 678.7) * (589.6 - 589.6) + (678.7 + 678.7) * (589.6 - 390.4) + (678.7 + 765.3) * (390.4 - 390.4) + (765.3 + 765.3) * (390.4 - 284.6) + (765.3 + 938.4) * (284.6 - 284.6) + (938.4 + 938.4) * (284.6 - 280.6) + (938.4 + 942.4) * (280.6 - 280.6) + (942.4 + 942.4) * (280.6 - 119) + (942.4 + 1279.5) * (119 - 119) * 0.5 * 0.00694$
STORAGE (Non-living area)	210	$-(1469.7 + 1469.7) * (437.1 - 589.6) + (1469.7 + 1473.7) * (589.6 - 589.6) + (1473.7 + 1473.7) * (589.6 - 595.6) + (1473.7 + 1275.5) * (595.6 - 595.6) + (1275.5 + 1275.5) * (595.6 - 589.6) + (1275.5 + 1279.5) * (589.6 - 589.6) + (1279.5 + 1279.5) * (589.6 - 437.1) + (1279.5 + 1469.7) * (437.1 - 437.1) * 0.5 * 0.00694$
FULL BATH (Non-living area)	88	$-(721.9 + 721.9) * (225.3 - 262.1) + (721.9 + 765.3) * (262.1 - 262.1) + (765.3 + 765.3) * (262.1 - 390.4) + (765.3 + 678.7) * (390.4 - 390.4) + (678.7 + 678.7) * (390.4 - 225.3) + (678.7 + 721.9) * (225.3 - 225.3) * 0.5 * 0.00694$
UNDEFINED (Non-living area)	11	$-(765.3 + 765.3) * (225.3 - 262.1) + (765.3 + 721.9) * (262.1 - 262.1) + (721.9 + 721.9) * (262.1 - 225.3) + (721.9 + 765.3) * (225.3 - 225.3) * 0.5 * 0.00694$
COVERED ENTRANCE (Non-living area)	621	$-(322 + 322) * (119 - 595.6) + (322 + 134.3) * (595.6 - 595.6) + (134.3 + 134.3) * (595.6 - 119) + (134.3 + 322) * (119 - 119) * 0.5 * 0.00694$

300 King Oak Street, Trenton, Clinton County, Illinois, United States, 62293

Gross Living Area: 1469 sq. ft



Space	Area (sq. ft)	Calculation <small>Coordinate Polygon Area Algorithm using inches</small>
LOW CEILING (Non-living area)	205	$-((2094.8 + 2094.8) * (384.4 - 419.4) + (2094.8 + 1251.4) * (419.4 - 419.4) + (1251.4 + 1251.4) * (419.4 - 384.4) + (1251.4 + 2094.8) * (384.4 - 384.4)) * 0.5 * 0.00694$
LOW CEILING (Non-living area)	177	$-((2094.8 + 2094.8) * (251.5 - 283.7) + (2094.8 + 1304.2) * (283.7 - 283.7) + (1304.2 + 1303) * (283.7 - 257.5) + (1303 + 1303) * (257.5 - 251.5) + (1303 + 2094.8) * (251.5 - 251.5)) * 0.5 * 0.00694$
ATTIC STORAGE (Non-living area)	602	$-((1303 + 1303) * (251.5 - 257.5) + (1303 + 1304.2) * (257.5 - 283.7) + (1304.2 + 2094.8) * (283.7 - 283.7) + (2094.8 + 2094.8) * (283.7 - 384.4) + (2094.8 + 1251.4) * (384.4 - 384.4) + (1251.4 + 1251.4) * (384.4 - 251.5) + (1251.4 + 1303) * (251.5 - 251.5)) * 0.5 * 0.00694$