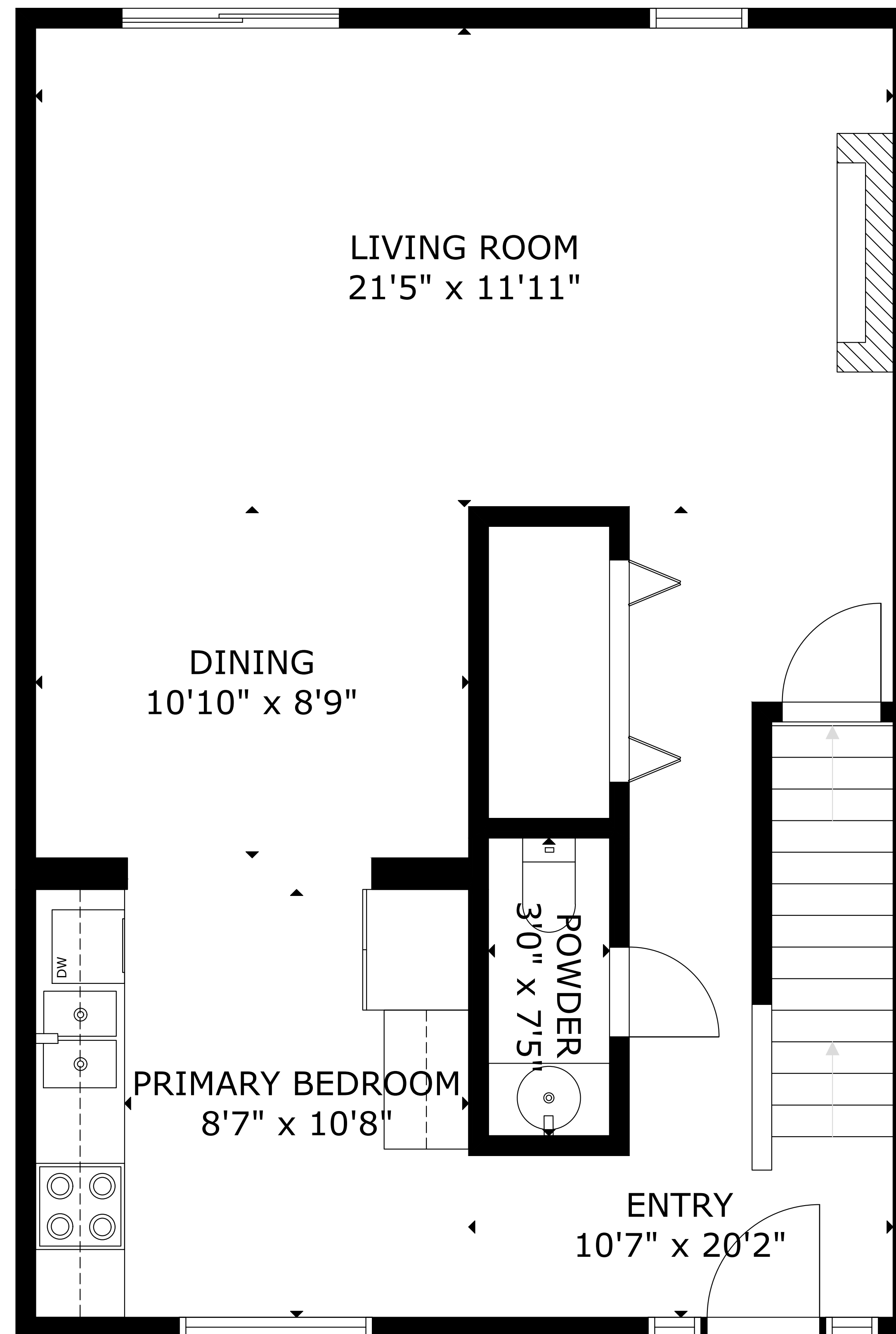


BASEMENT
21'0" x 30'7"

LOWER FLOOR



LIVING ROOM
21'5" x 11'11"

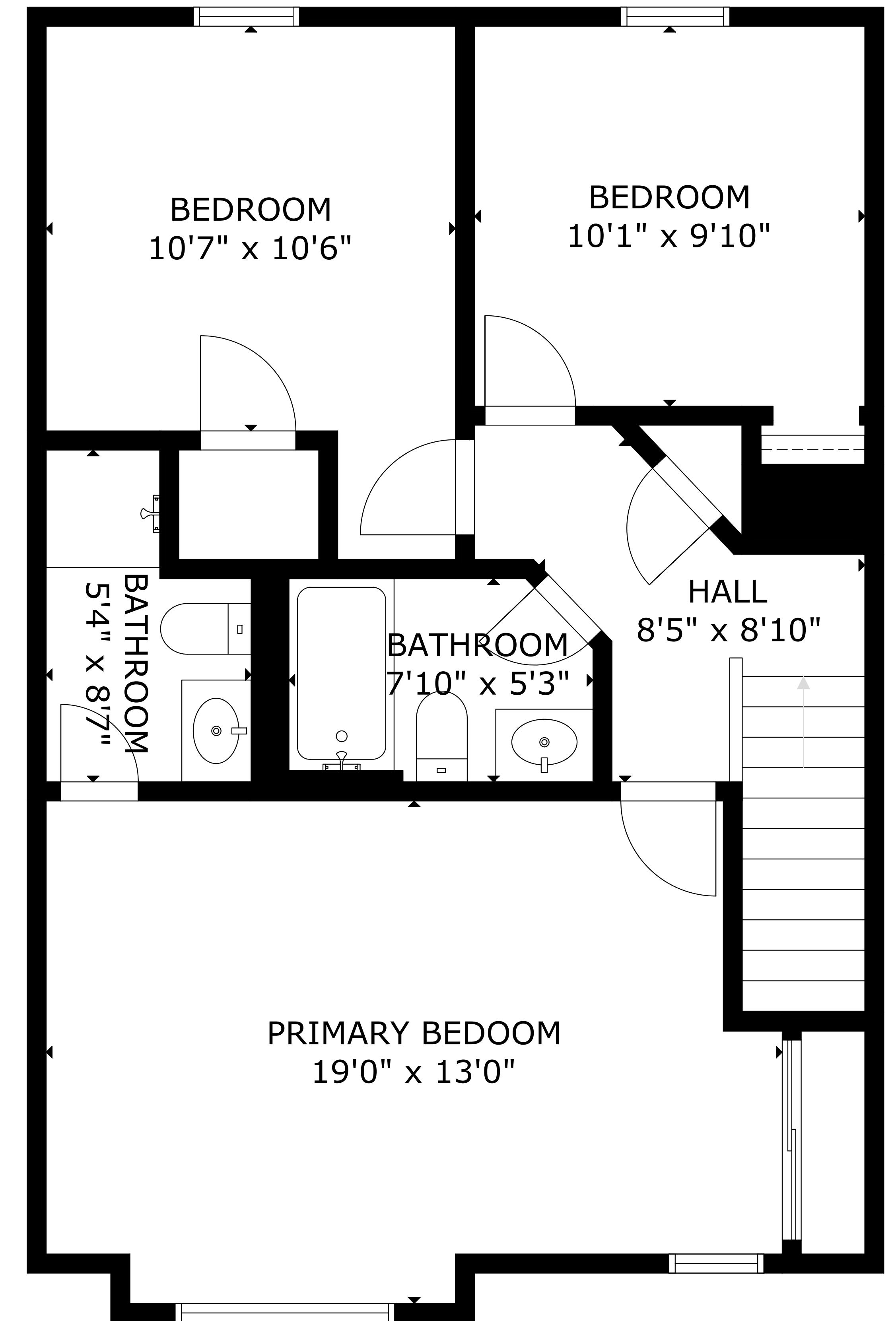
DINING
10'10" x 8'9"

PRIMARY BEDROOM
8'7" x 10'8"

POWDER
3'0" x 7'5"

ENTRY
10'7" x 20'2"

MAIN FLOOR



BEDROOM
10'7" x 10'6"

BEDROOM
10'1" x 9'10"

BATHROOM
5'4" x 8'7"

BATHROOM
7'10" x 5'3"

HALL
8'5" x 8'10"

PRIMARY BEDROOM
19'0" x 13'0"

UPPER LEVEL 1

GROSS INTERNAL AREA
TOTAL: 2,012 sq ft
LOWER FLOOR: 642 sq ft, MAIN FLOOR: 687 sq ft, UPPER LEVEL 1: 683 sq ft
SIZE AND DIMENSIONS ARE APPROXIMATE, ACTUAL MAY VARY