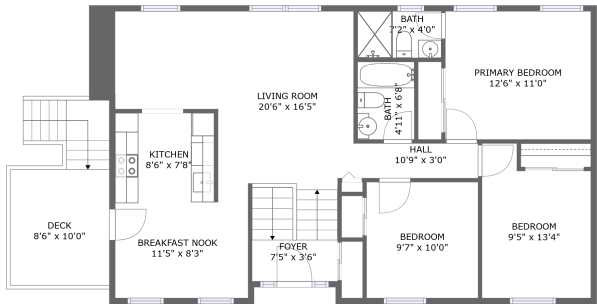


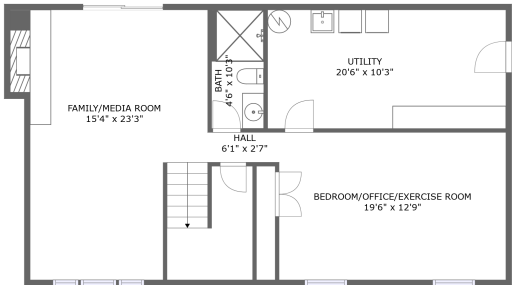
Home report

17125 Hoskinson Road, Westerly, Poolesville, Montgomery County, Maryland, United States, 20837



FLOOR 2

PATIO  
16'5" x 14'8"



FLOOR 1


Total Area: 1772 sq. ft

Below Ground: 759 sq. ft, Floor 2: 1013 sq. ft

Excluded: Patio 242 sq. ft, Utility 210 sq. ft, Deck 85 sq. ft, Walls: 133 sq. ft

Property summary

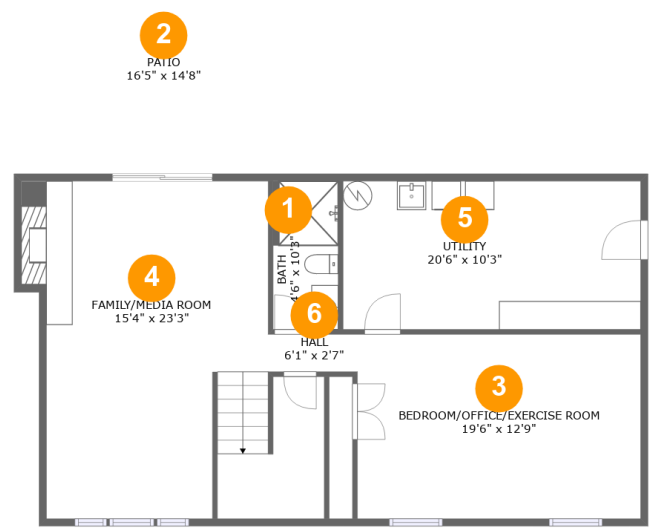
 2 Floors

 3 Bedrooms

 3 Bathrooms

Home report

17125 Hoskinson Road, Westerly, Poolesville, Montgomery County, Maryland, United States, 20837



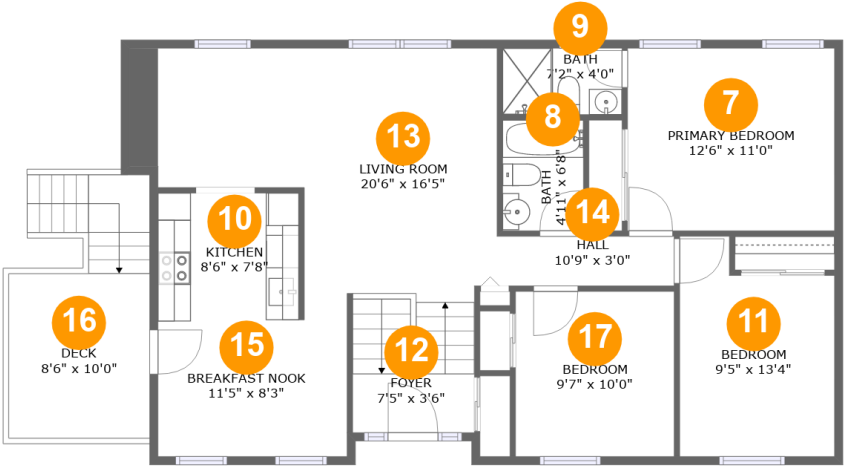
Room dimensions

Floor 1 Below ground Total:759sqft    Excluded: 452sqft

#		Max Dimensions	sqft	Included
1	Bath	4'6" x 10'3"	46 sq. ft	Yes
2	Patio	16'5" x 14'8"	242 sq. ft	No
3	BEDROOM/OFFICE/ EXERCISE Room	19'6" x 12'9"	248 sq. ft	Yes
4	FAMILY/MEDIA Room	15'4" x 23'3"	333 sq. ft	Yes
5	Utility	20'6" x 10'3"	210 sq. ft	No
6	Hall	6'1" x 2'7"	16 sq. ft	Yes

Home report

17125 Hoskinson Road, Westerly, Poolesville, Montgomery County, Maryland, United States, 20837



Room dimensions

Floor 2 Total:1013sqft    Excluded: 85sqft

#		Max Dimensions	sqft	Included
7	Primary Bedroom	12'6" x 11'0"	138 sq. ft	Yes
8	Bath	4'11" x 6'8"	33 sq. ft	Yes
9	Bath	7'2" x 4'0"	29 sq. ft	Yes
10	Kitchen	8'6" x 7'8"	65 sq. ft	Yes
11	Bedroom	9'5" x 13'4"	110 sq. ft	Yes
12	Foyer	7'5" x 3'6"	26 sq. ft	Yes
13	Living Room	20'6" x 16'5"	300 sq. ft	Yes
14	Hall	10'9" x 3'0"	32 sq. ft	Yes
15	Breakfast Nook	11'5" x 8'3"	95 sq. ft	Yes
16	Deck	8'6" x 10'0"	85 sq. ft	No
17	Bedroom	9'7" x 10'0"	96 sq. ft	Yes

17125 Hoskinson Road, Westerly, Poolesville, Montgomery  
County, Maryland, United States, 20837

1 Floor 1 - Bath



Max Dimensions: 4'6" x 10'3"  
Calculated Area: 46 sq. ft  
Included: Yes

Heated: Yes  
Finished: Yes  
Enclosed: Yes  
Contiguous: Yes  
Permitted: Yes  
Wet space: Yes  
Addition: No  
Conversion: No

2 Floor 1 - Patio



Max Dimensions: 16'5" x 14'8"  
Calculated Area: 242 sq. ft  
Included: No

Heated: No  
Finished: Yes  
Enclosed: No  
Contiguous: Yes  
Permitted: Yes  
Wet space: No  
Addition: No  
Conversion: No

17125 Hoskinson Road, Westerly, Poolesville, Montgomery  
County, Maryland, United States, 20837

3 Floor 1 - BEDROOM/OFFICE/EXERCISE Room



Max Dimensions: 19'6" x 12'9"  
Calculated Area: 248 sq. ft  
Included: Yes

Heated: Yes  
Finished: Yes  
Enclosed: Yes  
Contiguous: Yes  
Permitted: Yes  
Wet space: No  
Addition: No  
Conversion: No

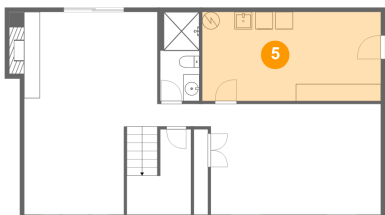
4 Floor 1 - FAMILY/MEDIA Room



Max Dimensions: 15'4" x 23'3"  
Calculated Area: 333 sq. ft  
Included: Yes

Heated: Yes  
Finished: Yes  
Enclosed: Yes  
Contiguous: Yes  
Permitted: Yes  
Wet space: No  
Addition: No  
Conversion: No

5 Floor 1 - Utility

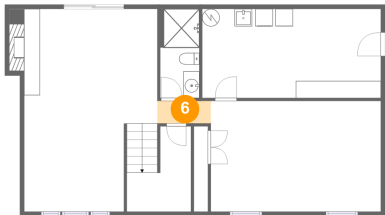


Max Dimensions: 20'6" x 10'3"  
Calculated Area: 210 sq. ft  
Included: No

Heated: Yes  
Finished: No  
Enclosed: Yes  
Contiguous: Yes  
Permitted: Yes  
Wet space: No  
Addition: No  
Conversion: No

17125 Hoskinson Road, Westerly, Poolesville, Montgomery  
County, Maryland, United States, 20837

6 Floor 1 - Hall



Max Dimensions: 6'1" x 2'7"  
Calculated Area: 16 sq. ft  
Included: Yes

Heated: Yes  
Finished: Yes  
Enclosed: Yes  
Contiguous: Yes  
Permitted: Yes  
Wet space: No  
Addition: No  
Conversion: No

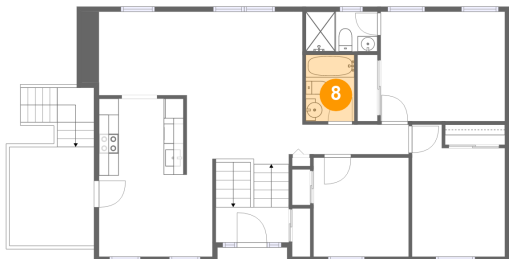
7 Floor 2 - Primary Bedroom



Max Dimensions: 12'6" x 11'0"  
Calculated Area: 138 sq. ft  
Included: Yes

Heated: Yes  
Finished: Yes  
Enclosed: Yes  
Contiguous: Yes  
Permitted: Yes  
Wet space: No  
Addition: No  
Conversion: No

8 Floor 2 - Bath



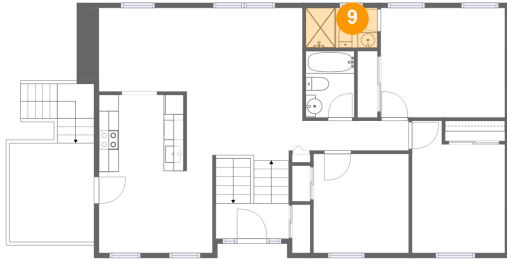
Max Dimensions: 4'11" x 6'8"  
Calculated Area: 33 sq. ft  
Included: Yes

Heated: Yes  
Finished: Yes  
Enclosed: Yes  
Contiguous: Yes  
Permitted: Yes  
Wet space: Yes  
Addition: No  
Conversion: No

## Home report

17125 Hoskinson Road, Westerly, Poolesville, Montgomery County, Maryland, United States, 20837

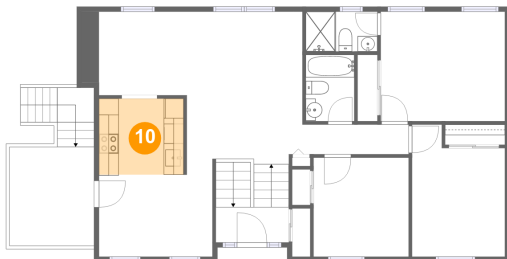
### 9 Floor 2 - Bath



Max Dimensions: 7'2" x 4'0"  
Calculated Area: 29 sq. ft  
Included: Yes

Heated: Yes  
Finished: Yes  
Enclosed: Yes  
Contiguous: Yes  
Permitted: Yes  
Wet space: Yes  
Addition: No  
Conversion: No

### 10 Floor 2 - Kitchen



Max Dimensions: 8'6" x 7'8"  
Calculated Area: 65 sq. ft  
Included: Yes

Heated: Yes  
Finished: Yes  
Enclosed: Yes  
Contiguous: Yes  
Permitted: Yes  
Wet space: No  
Addition: No  
Conversion: No

### 11 Floor 2 - Bedroom

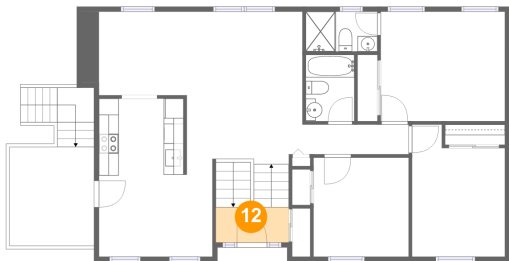


Max Dimensions: 9'5" x 13'4"  
Calculated Area: 110 sq. ft  
Included: Yes

Heated: Yes  
Finished: Yes  
Enclosed: Yes  
Contiguous: Yes  
Permitted: Yes  
Wet space: No  
Addition: No  
Conversion: No

17125 Hoskinson Road, Westerly, Poolesville, Montgomery  
County, Maryland, United States, 20837

12 Floor 2 - Foyer



Max Dimensions: 7'5" x 3'6"  
Calculated Area: 26 sq. ft  
Included: Yes

Heated: Yes  
Finished: Yes  
Enclosed: Yes  
Contiguous: Yes  
Permitted: Yes  
Wet space: No  
Addition: No  
Conversion: No

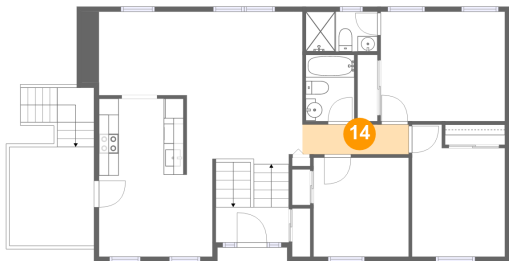
13 Floor 2 - Living Room



Max Dimensions: 20'6" x 16'5"  
Calculated Area: 300 sq. ft  
Included: Yes

Heated: Yes  
Finished: Yes  
Enclosed: Yes  
Contiguous: Yes  
Permitted: Yes  
Wet space: No  
Addition: No  
Conversion: No

14 Floor 2 - Hall



Max Dimensions: 10'9" x 3'0"  
Calculated Area: 32 sq. ft  
Included: Yes

Heated: Yes  
Finished: Yes  
Enclosed: Yes  
Contiguous: Yes  
Permitted: Yes  
Wet space: No  
Addition: No  
Conversion: No



17125 Hoskinson Road, Westerly, Poolesville, Montgomery  
County, Maryland, United States, 20837

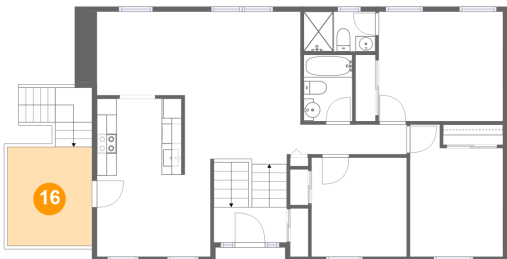
15 Floor 2 - Breakfast Nook



Max Dimensions: 11'5" x 8'3"  
Calculated Area: 95 sq. ft  
Included: Yes

Heated: Yes  
Finished: Yes  
Enclosed: Yes  
Contiguous: Yes  
Permitted: Yes  
Wet space: No  
Addition: No  
Conversion: No

16 Floor 2 - Deck



Max Dimensions: 8'6" x 10'0"  
Calculated Area: 85 sq. ft  
Included: No

Heated: No  
Finished: Yes  
Enclosed: No  
Contiguous: Yes  
Permitted: Yes  
Wet space: No  
Addition: No  
Conversion: No

17 Floor 2 - Bedroom



Max Dimensions: 9'7" x 10'0"  
Calculated Area: 96 sq. ft  
Included: Yes

Heated: Yes  
Finished: Yes  
Enclosed: Yes  
Contiguous: Yes  
Permitted: Yes  
Wet space: No  
Addition: No  
Conversion: No