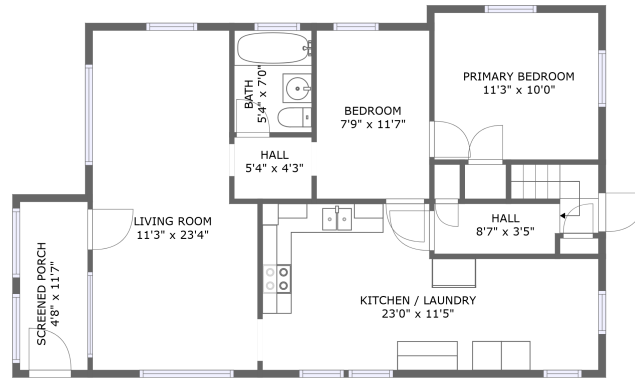
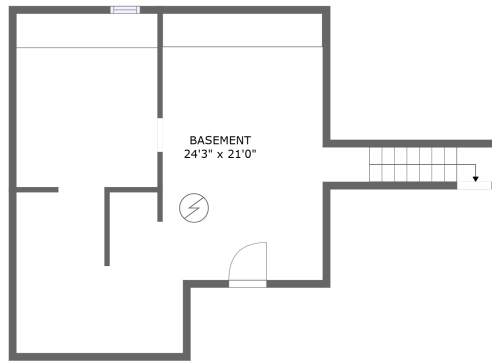


# 440 North 8th Avenue, Bonneville, Pocatello, Bannock County, Idaho, United States, 83201



FLOOR 2




FLOOR 1

## Property Summary

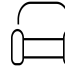
 **0** garages

 **2** bedrooms

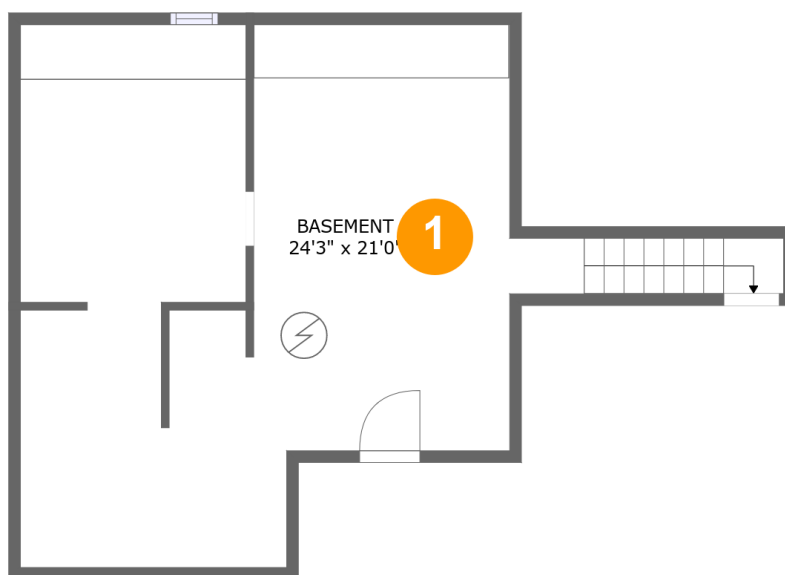
 **1** bathrooms

 **0** half baths

 **2** floors

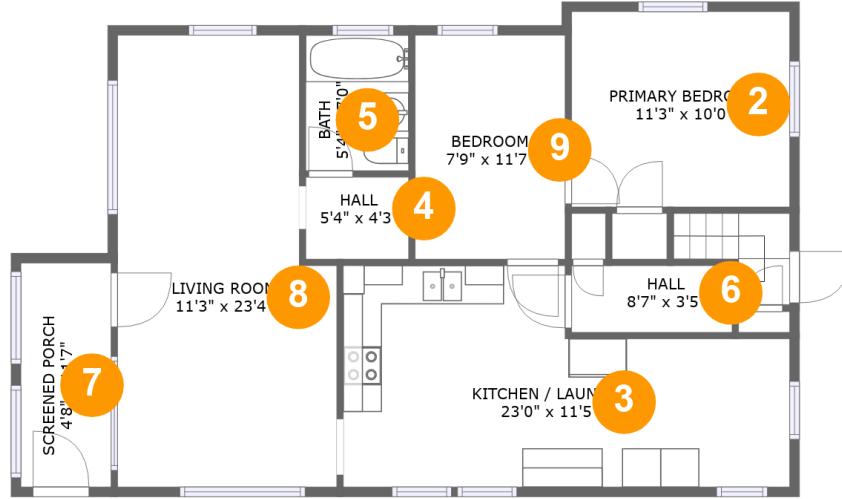
 **880** Gross Living Area sqft

 **1,472** total sqft

**440 North 8th Avenue, Bonneville, Pocatello,  
Bannock County, Idaho, United States, 83201****Room Dimensions****Floor 1****Total sqft: 527****Living area: 0**

#	Room name	Dimensions	Area (sqft)	Counted as Living Area
1	Basement	24'3" x 21'0"	461 sq. ft	No

# 440 North 8th Avenue, Bonneville, Pocatello, Bannock County, Idaho, United States, 83201



## Room Dimensions

Floor 2

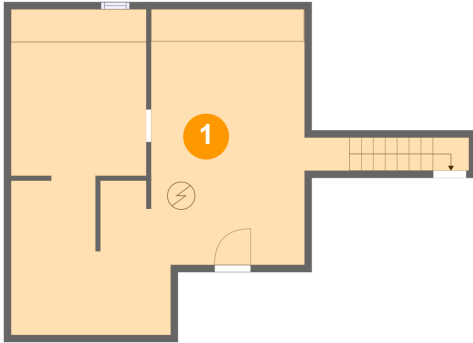
Total sqft: 945

Living area: 880

#	Room name	Dimensions	Area (sqft)	Counted as Living Area
2	Primary Bedroom	11'3" x 10'0"	113 sq. ft	Yes
3	Kitchen / Laundry	23'0" x 11'5"	219 sq. ft	Yes
4	Hall	5'4" x 4'3"	22 sq. ft	Yes
5	Bath	5'4" x 7'0"	37 sq. ft	Yes
6	Hall	8'7" x 3'5"	50 sq. ft	Yes
7	Screened Porch	4'8" x 11'7"	54 sq. ft	No
8	Living Room	11'3" x 23'4"	241 sq. ft	Yes
9	Bedroom	7'9" x 11'7"	89 sq. ft	Yes

# 440 North 8th Avenue, Bonneville, Pocatello, Bannock County, Idaho, United States, 83201

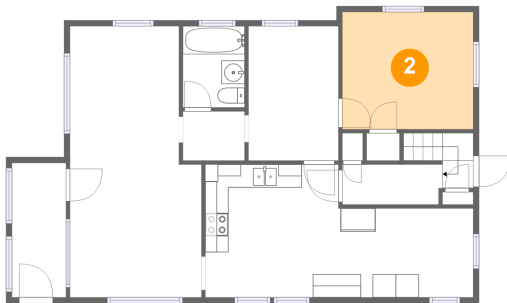
## 1 Floor 1 - Basement



Dimensions: 24'3" x 21'0"  
Area: 461 sq. ft  
Counted as Living Area: No

Heated: No  
Finished: Yes  
Enclosed: Yes  
Contiguous: Yes  
Permitted: Yes  
Wet Space: No  
Addition: No  
Conversion: No

## 2 Floor 2 - Primary Bedroom

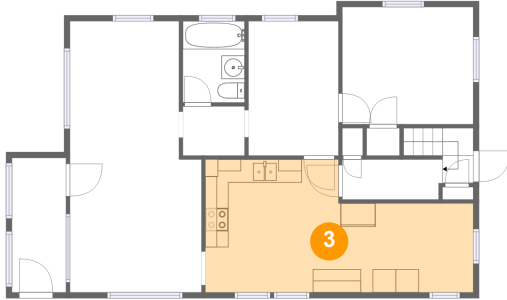


Dimensions: 11'3" x 10'0"  
Area: 113 sq. ft  
Counted as Living Area:  
Yes

Heated: Yes  
Finished: Yes  
Enclosed: Yes  
Contiguous:  
Yes  
Permitted: Yes  
Wet Space: No  
Addition: No  
Conversion: No

# 440 North 8th Avenue, Bonneville, Pocatello, Bannock County, Idaho, United States, 83201

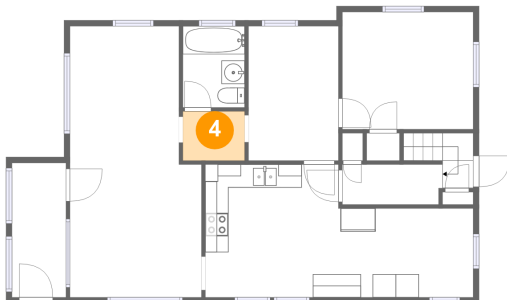
## 3 Floor 2 - Kitchen / Laundry



Dimensions: 23'0" x 11'5"  
Area: 219 sq. ft  
Counted as Living Area:  
Yes

Heated: Yes  
Finished: Yes  
Enclosed: Yes  
Contiguous:  
Yes  
Permitted: Yes  
Wet Space: No  
Addition: No  
Conversion: No

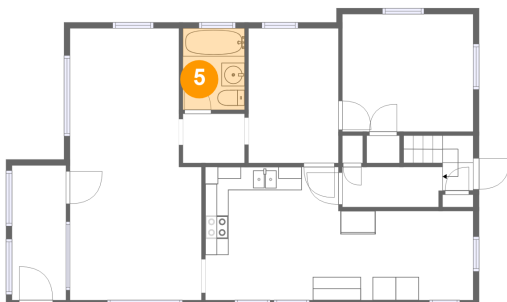
## 4 Floor 2 - Hall



Dimensions: 5'4" x 4'3"  
Area: 22 sq. ft  
Counted as Living Area:  
Yes

Heated: Yes  
Finished: Yes  
Enclosed: Yes  
Contiguous:  
Yes  
Permitted: Yes  
Wet Space: No  
Addition: No  
Conversion: No

## 5 Floor 2 - Bath

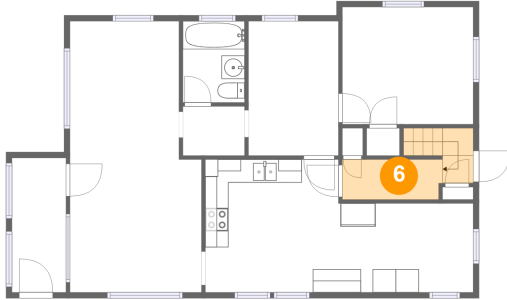


Dimensions: 5'4" x 7'0"  
Area: 37 sq. ft  
Counted as Living Area:  
Yes

Heated: Yes  
Finished: Yes  
Enclosed: Yes  
Contiguous:  
Yes  
Permitted: Yes  
Wet Space: Yes  
Addition: No  
Conversion: No

# 440 North 8th Avenue, Bonneville, Pocatello, Bannock County, Idaho, United States, 83201

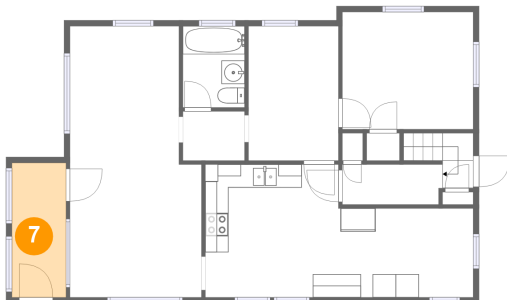
## 6 Floor 2 - Hall



Dimensions: 8'7" x 3'5"  
Area: 50 sq. ft  
Counted as Living Area:  
Yes

Heated: Yes  
Finished: Yes  
Enclosed: Yes  
Contiguous:  
Yes  
Permitted: Yes  
Wet Space: No  
Addition: No  
Conversion: No

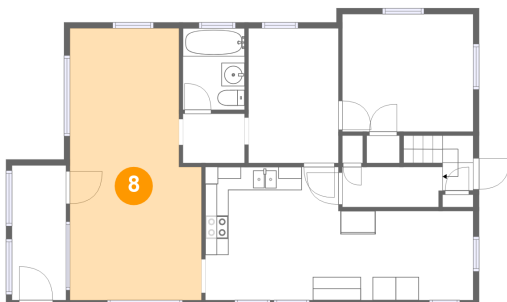
## 7 Floor 2 - Screened Porch



Dimensions: 4'8" x 11'7"  
Area: 54 sq. ft  
Counted as Living Area: No

Heated: No  
Finished: Yes  
Enclosed: No  
Contiguous: Yes  
Permitted: Yes  
Wet Space: No  
Addition: No  
Conversion: No

## 8 Floor 2 - Living Room

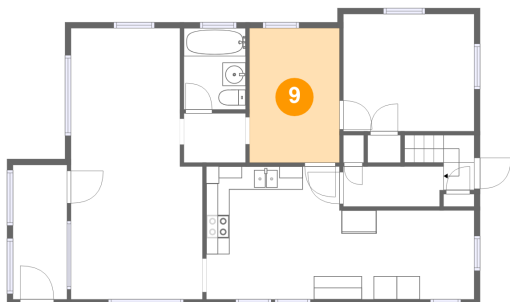


Dimensions: 11'3" x 23'4"  
Area: 241 sq. ft  
Counted as Living Area:  
Yes

Heated: Yes  
Finished: Yes  
Enclosed: Yes  
Contiguous:  
Yes  
Permitted: Yes  
Wet Space: No  
Addition: No  
Conversion: No

# 440 North 8th Avenue, Bonneville, Pocatello, Bannock County, Idaho, United States, 83201

## 9 Floor 2 - Bedroom



Dimensions: 7'9" x 11'7"  
Area: 89 sq. ft  
Counted as Living Area:  
Yes

Heated: Yes  
Finished: Yes  
Enclosed: Yes  
Contiguous:  
Yes  
Permitted: Yes  
Wet Space: No  
Addition: No  
Conversion: No