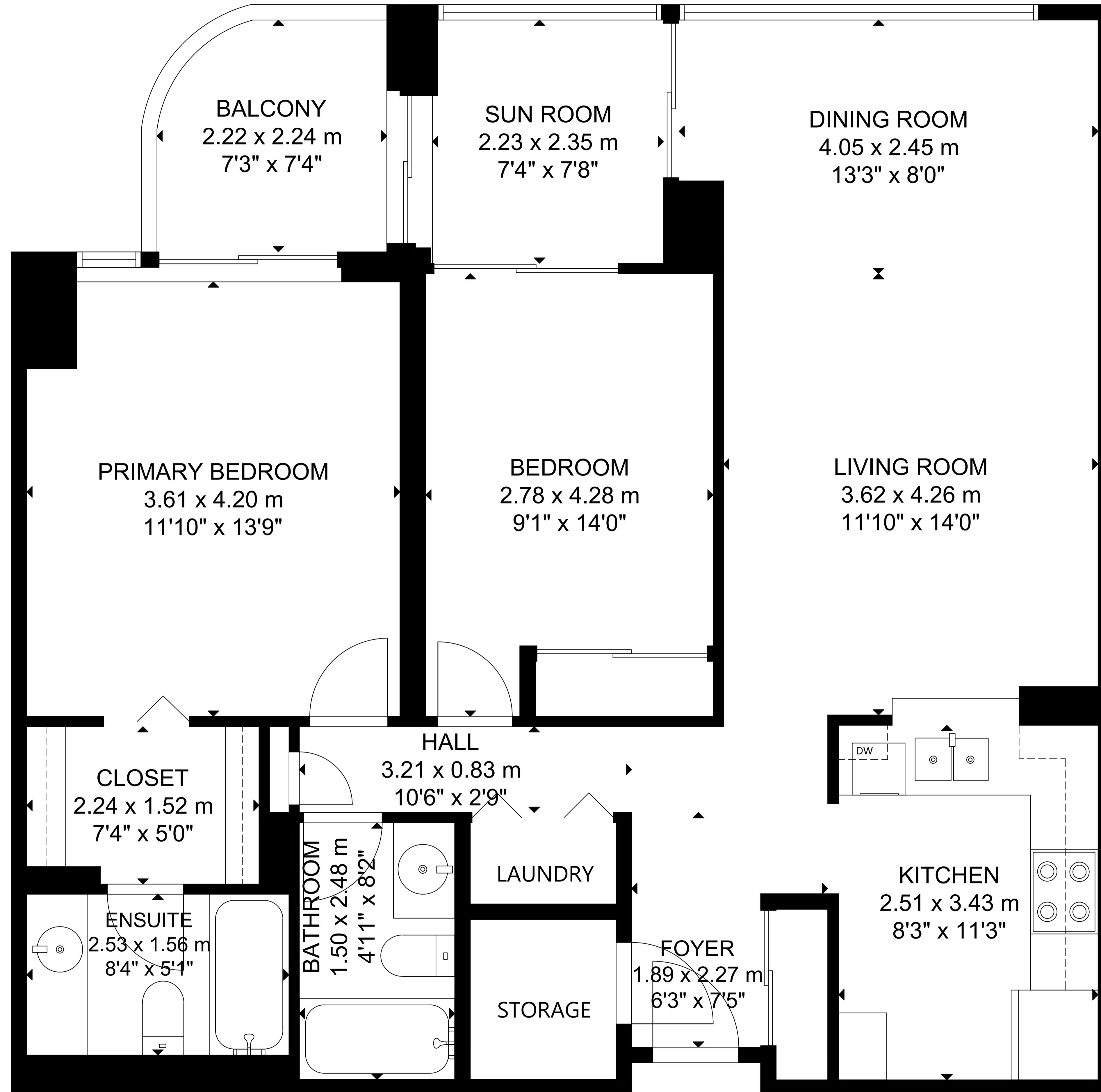


5765 Yonge Street, Suite 1110



MAIN FLOOR

GROSS INTERNAL AREA
MAIN FLOOR: 1,032 sq ft/ 96 m²
BALCONY: 53 sq ft/ 5 m²
TOTAL : 1,032 sq ft/ 96 m²

SIZE AND DIMENSIONS ARE APPROXIMATE, ACTUAL MAY VARY.