

Home report

5907 South 296th Place, West Hill, Auburn, King County,
Washington, United States, 98001



Total GLA: 2386 sq. ft

Floor 1: 1195 sq. ft, Floor 2: 1191 sq. ft

Excluded: Garage 453 sq. ft, Fireplace 24 sq. ft, Open to below 62 sq. ft

Property summary



2 Floors



4 Bedrooms



2 Bathrooms

Home report

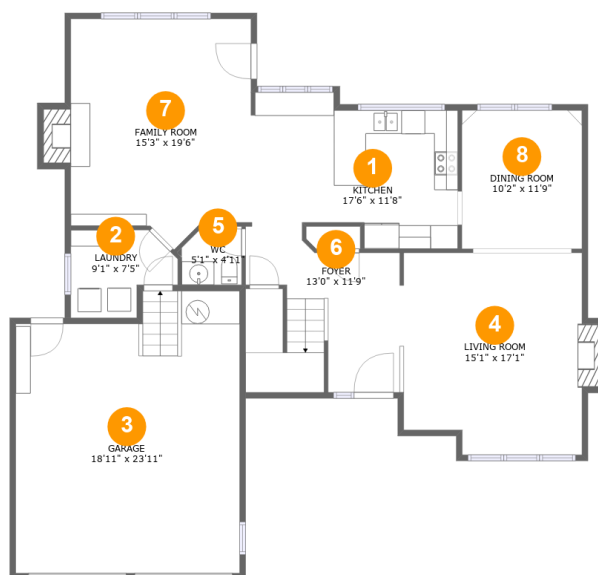
**5907 South 296th Place, West Hill, Auburn, King County,
Washington, United States, 98001**

 **1**
Half baths

 **1**
Garages

Home report

5907 South 296th Place, West Hill, Auburn, King County, Washington, United States, 98001



Room dimensions

Floor 1

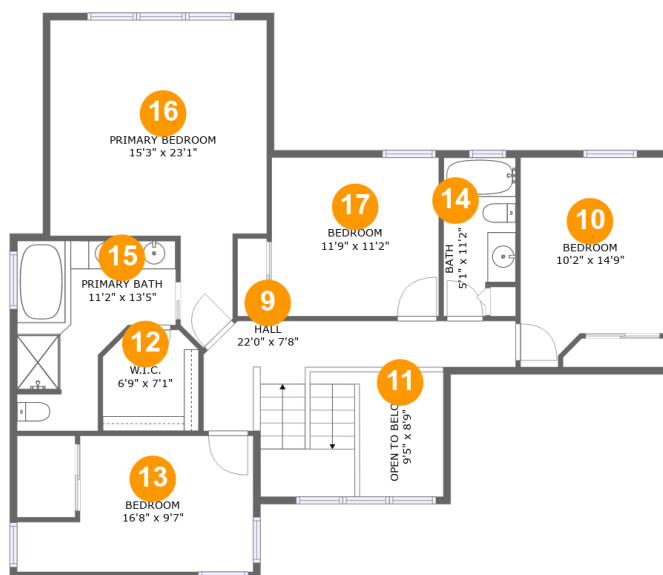
Total: 1195sqft

Excluded: 477sqft

#		Max Dimensions	sqft	Included
1	Kitchen	17'6" x 11'8"	195 sq. ft	Yes
2	Laundry	9'1" x 7'5"	55 sq. ft	Yes
3	Garage	18'11" x 23'11"	423 sq. ft	No
4	Living Room	15'1" x 17'1"	257 sq. ft	Yes
5	WC	5'1" x 4'11"	24 sq. ft	Yes
6	Foyer	13'0" x 11'9"	165 sq. ft	Yes
7	Family Room	15'3" x 19'6"	281 sq. ft	Yes
8	Dining Room	10'2" x 11'9"	119 sq. ft	Yes

Home report

5907 South 296th Place, West Hill, Auburn, King County, Washington, United States, 98001



Room dimensions

Floor 2

Total:1191sqft

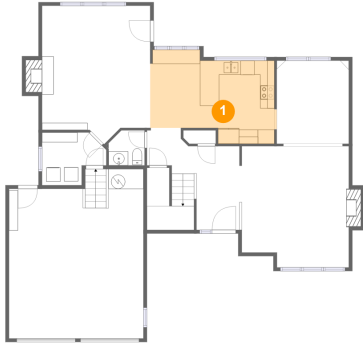
Excluded: 62sqft

#		Max Dimensions	sqft	Included
9	Hall	22'0" x 7'8"	149 sq. ft	Yes
10	Bedroom	10'2" x 14'9"	133 sq. ft	Yes
11	Open To Below	9'5" x 8'9"	55 sq. ft	No
12	W.I.C.	6'9" x 7'1"	45 sq. ft	Yes
13	Bedroom	16'8" x 9'7"	132 sq. ft	Yes
14	Bath	5'1" x 11'2"	52 sq. ft	Yes
15	Primary Bath	11'2" x 13'5"	110 sq. ft	Yes
16	Primary Bedroom	15'3" x 23'1"	257 sq. ft	Yes
17	Bedroom	11'9" x 11'2"	131 sq. ft	Yes

Home report

5907 South 296th Place, West Hill, Auburn, King County,
Washington, United States, 98001

1 Floor 1 - Kitchen



Max Dimensions: 17'6" x
11'8"
Calculated Area: 195 sq. ft
Included: Yes

Heated: Yes
Finished: Yes
Enclosed: Yes
Contiguous:
Yes
Permitted: Yes
Wet space: No
Addition: No
Conversion: No

2 Floor 1 - Laundry

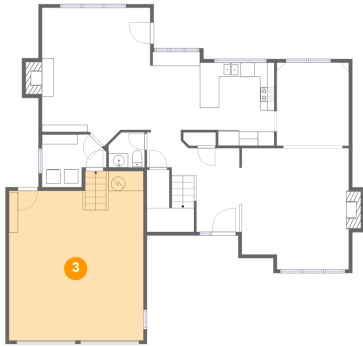


Max Dimensions: 9'1" x 7'5"
Calculated Area: 55 sq. ft
Included: Yes

Heated: Yes
Finished: Yes
Enclosed: Yes
Contiguous: Yes
Permitted: Yes
Wet space: No
Addition: No
Conversion: No

5907 South 296th Place, West Hill, Auburn, King County, Washington, United States, 98001

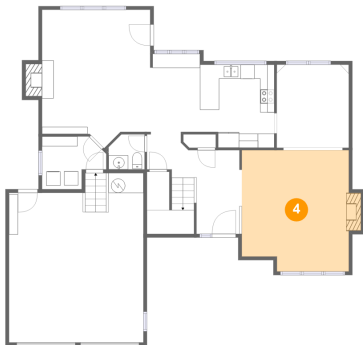
3 Floor 1 - Garage



Max Dimensions: 18'11" x 23'11"
Calculated Area: 423 sq. ft
Included: No

Heated: No
Finished: No
Enclosed: Yes
Contiguous: Yes
Permitted: Yes
Wet space: No
Addition: No
Conversion: No

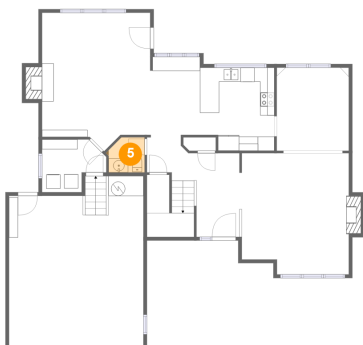
4 Floor 1 - Living Room



Max Dimensions: 15'1" x 17'1"
Calculated Area: 257 sq. ft
Included: Yes

Heated: Yes
Finished: Yes
Enclosed: Yes
Contiguous: Yes
Permitted: Yes
Wet space: No
Addition: No
Conversion: No

5 Floor 1 - WC

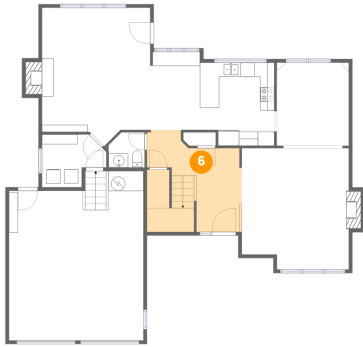


Max Dimensions: 5'1" x 4'11"
Calculated Area: 24 sq. ft
Included: Yes

Heated: Yes
Finished: Yes
Enclosed: Yes
Contiguous: Yes
Permitted: Yes
Wet space: Yes
Addition: No
Conversion: No

5907 South 296th Place, West Hill, Auburn, King County, Washington, United States, 98001

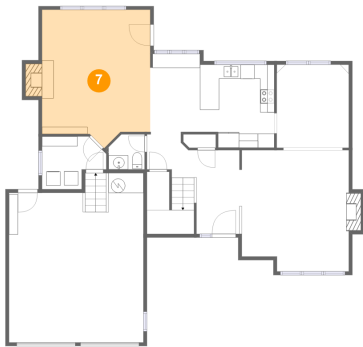
6 Floor 1 - Foyer



Max Dimensions: 13'0" x 11'9"
Calculated Area: 165 sq. ft
Included: Yes

Heated: Yes
Finished: Yes
Enclosed: Yes
Contiguous: Yes
Permitted: Yes
Wet space: No
Addition: No
Conversion: No

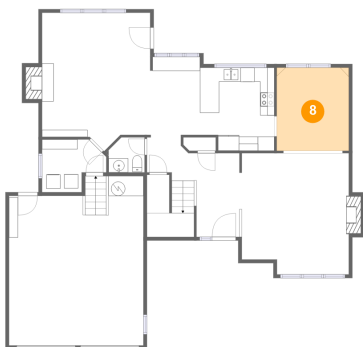
7 Floor 1 - Family Room



Max Dimensions: 15'3" x 19'6"
Calculated Area: 281 sq. ft
Included: Yes

Heated: Yes
Finished: Yes
Enclosed: Yes
Contiguous: Yes
Permitted: Yes
Wet space: No
Addition: No
Conversion: No

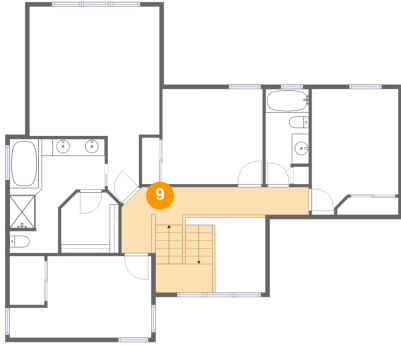
8 Floor 1 - Dining Room



Max Dimensions: 10'2" x 11'9"
Calculated Area: 119 sq. ft
Included: Yes

Heated: Yes
Finished: Yes
Enclosed: Yes
Contiguous: Yes
Permitted: Yes
Wet space: No
Addition: No
Conversion: No

9 Floor 2 - Hall



Max Dimensions: 22'0" x 7'8"
Calculated Area: 149 sq. ft
Included: Yes

Heated: Yes
Finished: Yes
Enclosed: Yes
Contiguous: Yes
Permitted: Yes
Wet space: No
Addition: No
Conversion: No

10 Floor 2 - Bedroom



Max Dimensions: 10'2" x 14'9"
Calculated Area: 133 sq. ft
Included: Yes

Heated: Yes
Finished: Yes
Enclosed: Yes
Contiguous: Yes
Permitted: Yes
Wet space: No
Addition: No
Conversion: No

11 Floor 2 - Open To Below



Max Dimensions: 9'5" x 8'9"
Calculated Area: 55 sq. ft
Included: No

Heated: No
Finished: No
Enclosed: No
Contiguous: Yes
Permitted: No
Wet space: No
Addition: No
Conversion: No

12 Floor 2 - W.I.C.



Max Dimensions: 6'9" x 7'1"
Calculated Area: 45 sq. ft
Included: Yes

Heated: Yes
Finished: Yes
Enclosed: Yes
Contiguous: Yes
Permitted: Yes
Wet space: No
Addition: No
Conversion: No

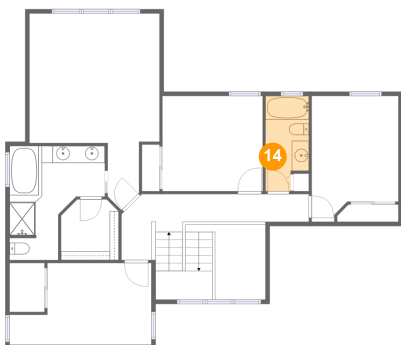
13 Floor 2 - Bedroom



Max Dimensions: 16'8" x 9'7"
Calculated Area: 132 sq. ft
Included: Yes

Heated: Yes
Finished: Yes
Enclosed: Yes
Contiguous: Yes
Permitted: Yes
Wet space: No
Addition: No
Conversion: No

14 Floor 2 - Bath

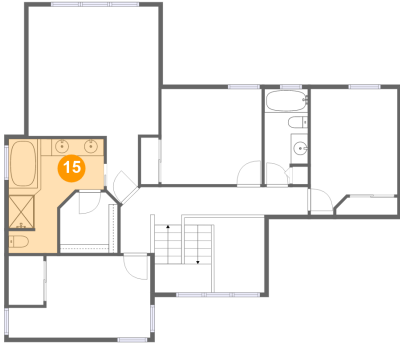


Max Dimensions: 5'1" x 11'2"
Calculated Area: 52 sq. ft
Included: Yes

Heated: Yes
Finished: Yes
Enclosed: Yes
Contiguous: Yes
Permitted: Yes
Wet space: Yes
Addition: No
Conversion: No

5907 South 296th Place, West Hill, Auburn, King County,
Washington, United States, 98001

15 Floor 2 - Primary Bath



Max Dimensions: 11'2" x 13'5"
Calculated Area: 110 sq. ft
Included: Yes

Heated: Yes
Finished: Yes
Enclosed: Yes
Contiguous: Yes
Permitted: Yes
Wet space: Yes
Addition: No
Conversion: No

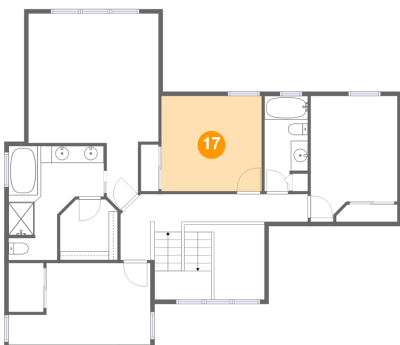
16 Floor 2 - Primary Bedroom



Max Dimensions: 15'3" x 23'1"
Calculated Area: 257 sq. ft
Included: Yes

Heated: Yes
Finished: Yes
Enclosed: Yes
Contiguous: Yes
Permitted: Yes
Wet space: No
Addition: No
Conversion: No

17 Floor 2 - Bedroom



Max Dimensions: 11'9" x 11'2"
Calculated Area: 131 sq. ft
Included: Yes

Heated: Yes
Finished: Yes
Enclosed: Yes
Contiguous: Yes
Permitted: Yes
Wet space: No
Addition: No
Conversion: No