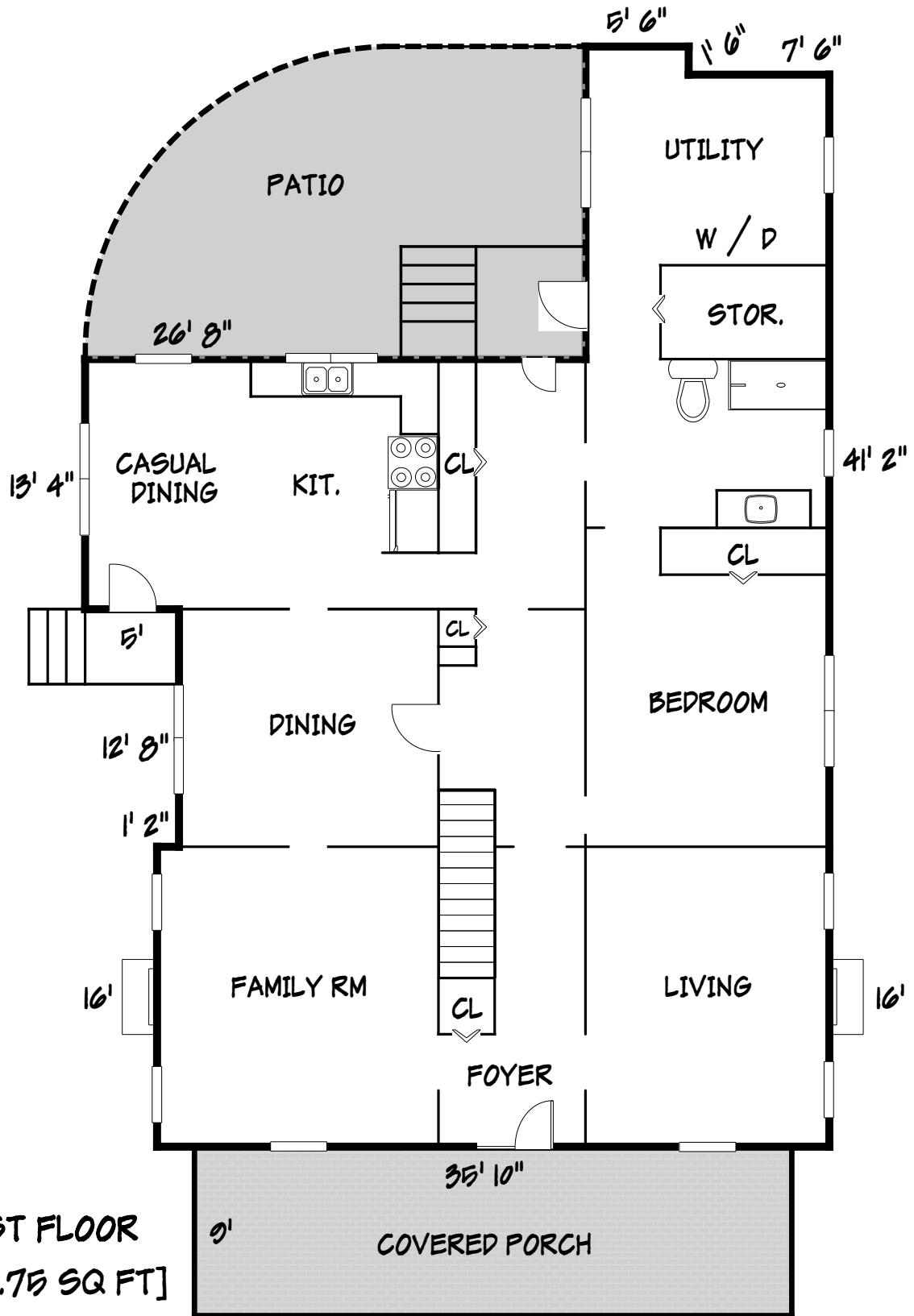
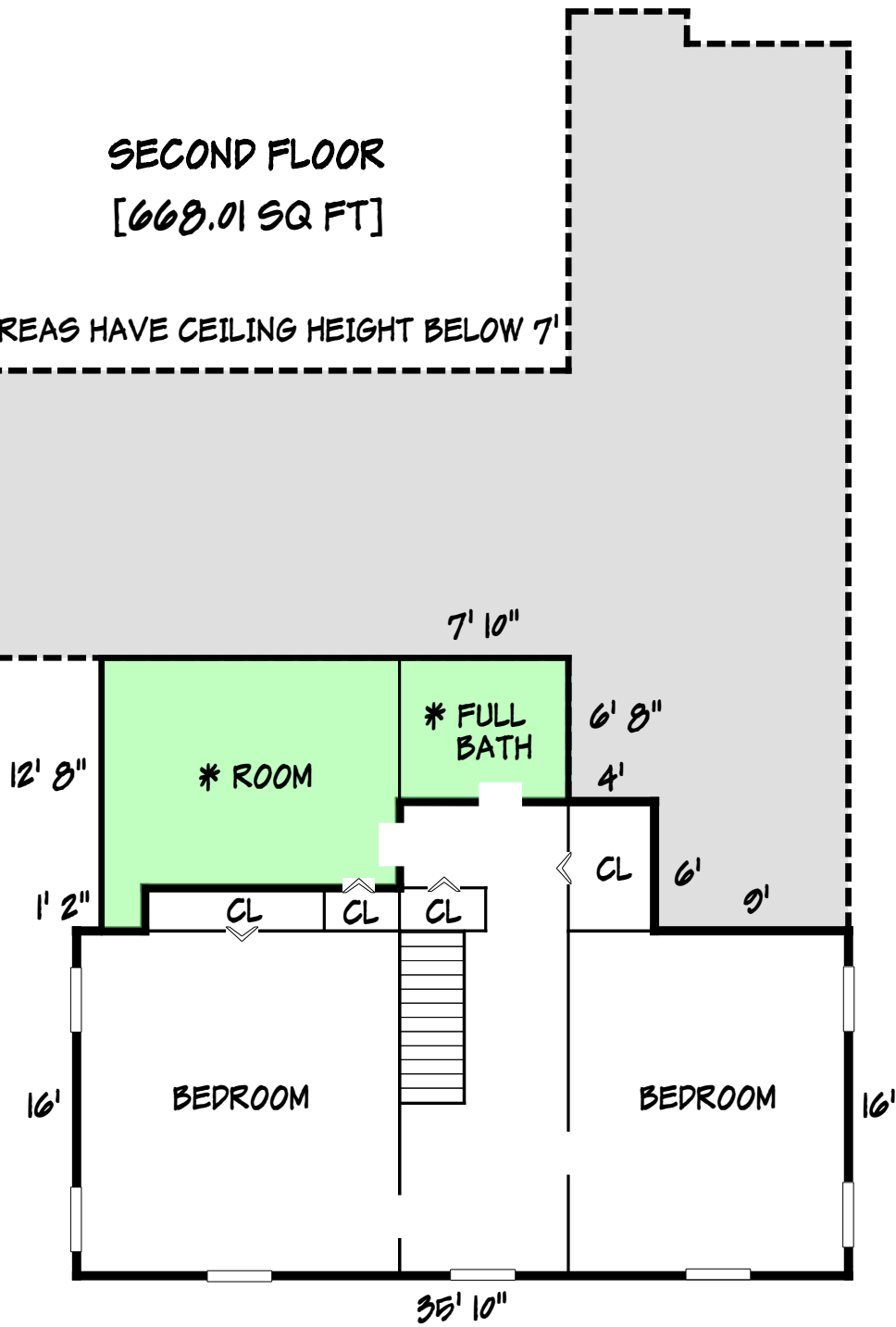


FIRST FLOOR
[1746.75 SQ FT]



SECOND FLOOR
[668.01 SQ FT]

* AREAS HAVE CEILING HEIGHT BELOW 7'



Area Calculations Summary

Living Area		Calculation Details	
First Floor	1746.75 Sq ft	$35.83 \times 16 = 573.33$ $34.67 \times 12.67 = 439.11$ $39.67 \times 13.33 = 528.89$ $0.5 \times 15.17 \times 0 = 0$ $13 \times 15.17 = 197.17$ $5.5 \times 1.5 = 8.25$	
Second Floor	668.01 Sq ft	$35.83 \times 16 = 573.33$ $2 \times 11.83 = 23.67$ $0.5 \times 7.83 \times 0 = 0$ $6 \times 7.83 = 47$ $6 \times 4 = 24$ $0.5 \times 0 \times 9 = 0$	
Total Living Area (Rounded):		2415 Sq ft	
Porch	286.5 Sq ft	$31.83 \times 9 = 286.5$	
Patio	386.36 Sq ft	$10.75 \times 16.67 = 179.16$ $0.5 \times 15.92 \times 16.67 = 132.64$ $0.5 \times 0 \times 16.67 = 0$ Arc = 74.56	
Non-calculated Finished Area below 7'	203.77 Sq ft	$2 \times 2 = 4$ $10.67 \times 13.83 = 147.55$ $7.83 \times 6.67 = 52.22$ $0.5 \times 7.83 \times 0 = 0$	