


4051 Meadowview Dr, Castro Valley, CA, US



FLOOR 1

Property summary

 **1** Garages

 **3** Bedrooms

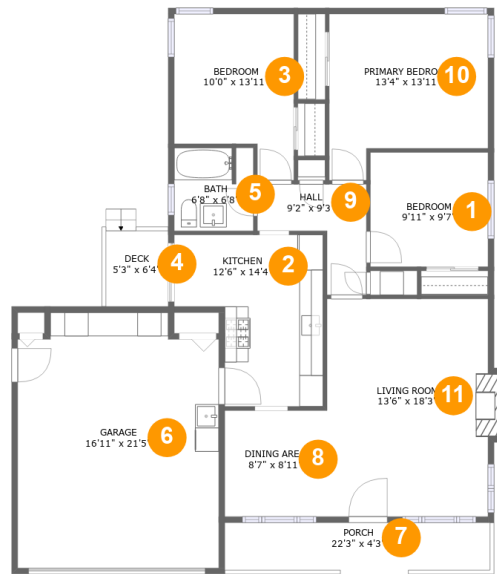
 **1** Bathrooms

 **0** Half baths

 **1** Floors

 **1,106**
Gross living
area sqft

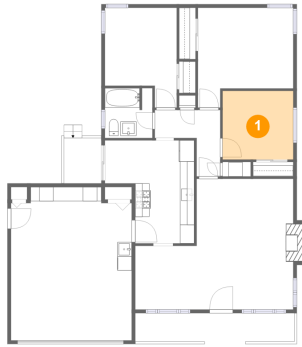
 **1,631**
Total sqft

4051 Meadowview Dr, Castro Valley, CA, US**Room dimensions****Floor 1****Total sqft: 1631 Living area: 1106**

#		Dimensions	sqft	Counted as living area
1	Bedroom	9'11" x 9'7"	95 sq. ft	Yes
2	Kitchen	12'6" x 14'4"	144 sq. ft	Yes
3	Bedroom	10'0" x 13'11"	119 sq. ft	Yes
4	Deck	5'3" x 6'4"	33 sq. ft	No
5	Bath	6'8" x 6'8"	45 sq. ft	Yes
6	Garage	16'11" x 21'5"	346 sq. ft	No
7	Porch	22'3" x 4'3"	91 sq. ft	No
8	Dining Area	8'7" x 8'11"	76 sq. ft	Yes
9	Hall	9'2" x 9'3"	54 sq. ft	Yes
10	Primary Bedroom	13'4" x 13'11"	159 sq. ft	Yes
11	Living Room	13'6" x 18'3"	254 sq. ft	Yes

4051 Meadowview Dr, Castro Valley, CA, US

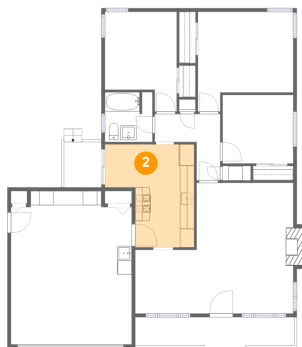
1 Floor 1 - Bedroom



Dimensions: 9'11" x 9'7"
Area: 95 sq. ft
Counted as living area: Yes

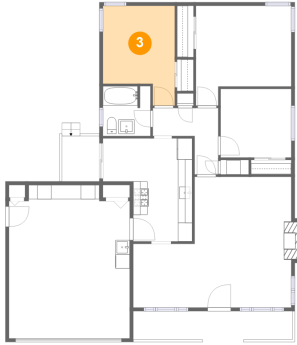
Heated: Yes
Finished: Yes
Enclosed: Yes
Contiguous: Yes
Permitted: Yes
Wet space: No
Addition: No
Conversion: No

2 Floor 1 - Kitchen



Dimensions: 12'6" x 14'4"
Area: 144 sq. ft
Counted as living area: Yes

Heated: Yes
Finished: Yes
Enclosed: Yes
Contiguous: Yes
Permitted: Yes
Wet space: No
Addition: No
Conversion: No

4051 Meadowview Dr, Castro Valley, CA, US**3 Floor 1 - Bedroom**

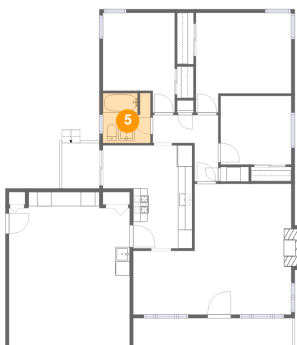
Dimensions: 10'0" x 13'11"
Area: 119 sq. ft
Counted as living area: Yes

Heated: Yes
Finished: Yes
Enclosed: Yes
Contiguous: Yes
Permitted: Yes
Wet space: No
Addition: No
Conversion: No

4 Floor 1 - Deck

Dimensions: 5'3" x 6'4"
Area: 33 sq. ft
Counted as living area: No

Heated: No
Finished: Yes
Enclosed: No
Contiguous: Yes
Permitted: Yes
Wet space: No
Addition: No
Conversion: No

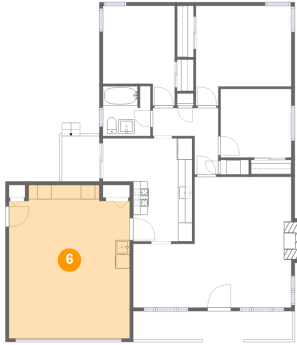
5 Floor 1 - Bath

Dimensions: 6'8" x 6'8"
Area: 45 sq. ft
Counted as living area: Yes

Heated: Yes
Finished: Yes
Enclosed: Yes
Contiguous: Yes
Permitted: Yes
Wet space: Yes
Addition: No
Conversion: No

4051 Meadowview Dr, Castro Valley, CA, US

6 Floor 1 - Garage



Dimensions: 16'11" x 21'5"
Area: 346 sq. ft
Counted as living area: No

Heated: No
Finished: No
Enclosed: Yes
Contiguous: Yes
Permitted: Yes
Wet space: No
Addition: No
Conversion: No

7 Floor 1 - Porch



Dimensions: 22'3" x 4'3"
Area: 91 sq. ft
Counted as living area: No

Heated: No
Finished: Yes
Enclosed: No
Contiguous: Yes
Permitted: Yes
Wet space: No
Addition: No
Conversion: No

8 Floor 1 - Dining Area

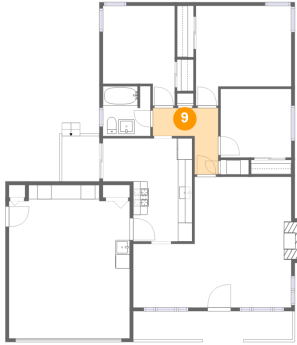


Dimensions: 8'7" x 8'11"
Area: 76 sq. ft
Counted as living area: Yes

Heated: Yes
Finished: Yes
Enclosed: Yes
Contiguous: Yes
Permitted: Yes
Wet space: No
Addition: No
Conversion: No

4051 Meadowview Dr, Castro Valley, CA, US

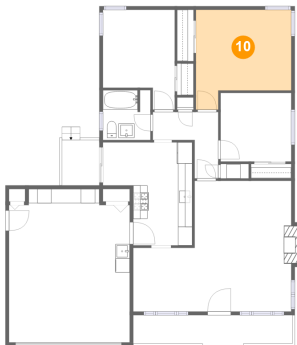
9 Floor 1 - Hall



Dimensions: 9'2" x 9'3"
Area: 54 sq. ft
Counted as living area: Yes

Heated: Yes
Finished: Yes
Enclosed: Yes
Contiguous: Yes
Permitted: Yes
Wet space: No
Addition: No
Conversion: No

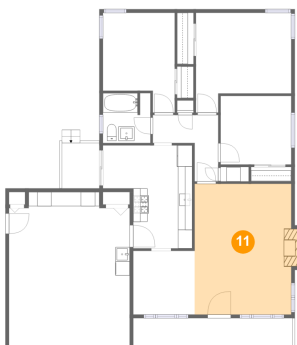
10 Floor 1 - Primary Bedroom



Dimensions: 13'4" x 13'11"
Area: 159 sq. ft
Counted as living area: Yes

Heated: Yes
Finished: Yes
Enclosed: Yes
Contiguous: Yes
Permitted: Yes
Wet space: No
Addition: No
Conversion: No

11 Floor 1 - Living Room



Dimensions: 13'6" x 18'3"
Area: 254 sq. ft
Counted as living area: Yes

Heated: Yes
Finished: Yes
Enclosed: Yes
Contiguous: Yes
Permitted: Yes
Wet space: No
Addition: No
Conversion: No