

Home report

2717 Cumberland Street Northwest, Roanoke, Virginia 24012, United States



Total Area: 1796 sq. ft

Below Ground: 57 sq. ft, Floor 2: 1028 sq. ft, Floor 3: 699 sq. ft, Floor 4: 12 sq. ft
Excluded: Storage 124 sq. ft, Basement 607 sq. ft, Deck 126 sq. ft, Covered patio 130 sq. ft, Porch 169 sq. ft, Fireplace 5 sq. ft, Low ceiling 66 sq. ft, Room 259 sq. ft, Walls: 224 sq. ft

Property summary



4
Floors

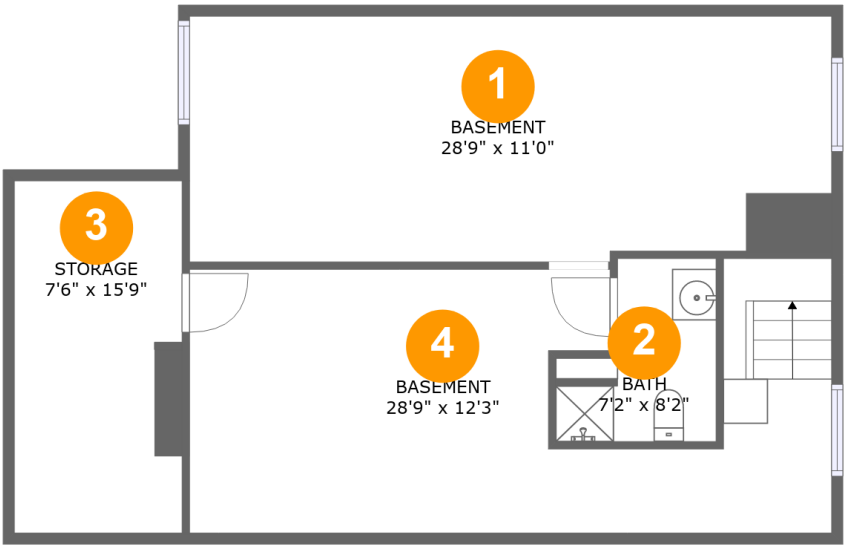


3
Bedrooms



3
Bathrooms

2717 Cumberland Street Northwest, Roanoke, Virginia 24012, United States



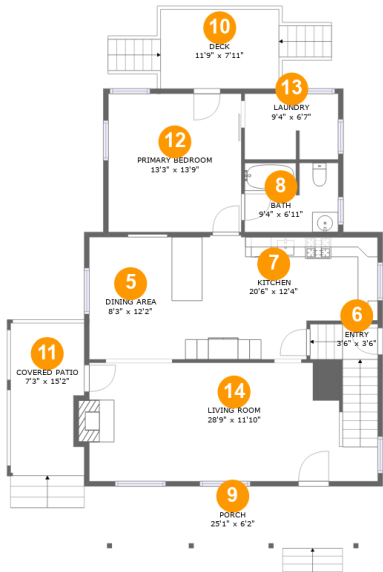
Room dimensions

Floor 1 Below ground Total:57sqft Excluded: 731sqft

#		Max Dimensions	sqft	Included
1	Basement	28'9" x 11'0"	311 sq. ft	No
2	Bath	7'2" x 8'2"	45 sq. ft	Yes
3	Storage	7'6" x 15'9"	118 sq. ft	No
4	Basement	28'9" x 12'3"	288 sq. ft	No

Home report

2717 Cumberland Street Northwest, Roanoke, Virginia 24012, United States

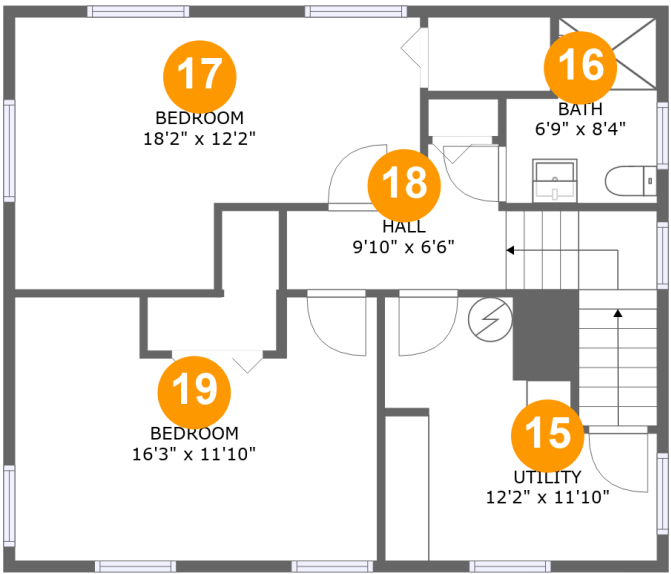


Room dimensions

Floor 2 Total:1028sqft Excluded: 430sqft

#		Max Dimensions	sqft	Included
5	Dining Area	8'3" x 12'2"	101 sq. ft	Yes
6	Entry	3'6" x 3'6"	24 sq. ft	Yes
7	Kitchen	20'6" x 12'4"	223 sq. ft	Yes
8	Bath	9'4" x 6'11"	63 sq. ft	Yes
9	Porch	25'1" x 6'2"	169 sq. ft	No
10	Deck	11'9" x 7'11"	126 sq. ft	No
11	Covered Patio	7'3" x 15'2"	130 sq. ft	No
12	Primary Bedroom	13'3" x 13'9"	182 sq. ft	Yes
13	Laundry	9'4" x 6'7"	60 sq. ft	Yes
14	Living Room	28'9" x 11'10"	333 sq. ft	Yes

2717 Cumberland Street Northwest, Roanoke, Virginia 24012, United States

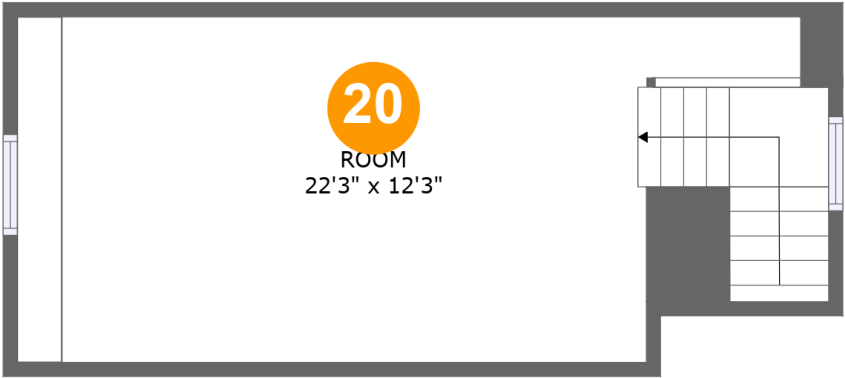


Room dimensions

Floor 3 Total:699sqft Excluded: 0sqft

#		Max Dimensions	sqft	Included
15	Utility	12'2" x 11'10"	120 sq. ft	Yes
16	Bath	6'9" x 8'4"	48 sq. ft	Yes
17	Bedroom	18'2" x 12'2"	185 sq. ft	Yes
18	Hall	9'10" x 6'6"	89 sq. ft	Yes
19	Bedroom	16'3" x 11'10"	173 sq. ft	Yes

2717 Cumberland Street Northwest, Roanoke, Virginia 24012,
United States



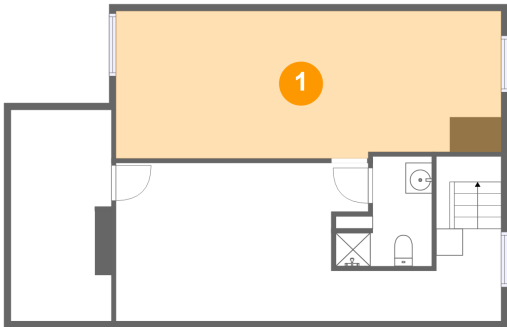
Room dimensions

Floor 4 Total:12sqft Excluded: 325sqft

#		Max Dimensions	sqft	Included
20	Room	22'3" x 12'3"	259 sq. ft	No

2717 Cumberland Street Northwest, Roanoke, Virginia 24012,
United States

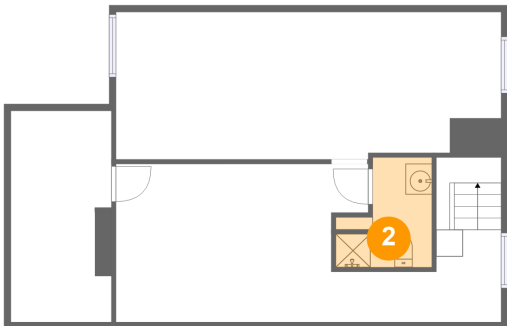
1 Floor 1 - Basement



Max Dimensions: 28'9" x 11'0"
Calculated Area: 311 sq. ft
Included: No

Heated: Yes
Finished: No
Enclosed: Yes
Contiguous: Yes
Permitted: Yes
Wet space: No
Addition: No
Conversion: No

2 Floor 1 - Bath

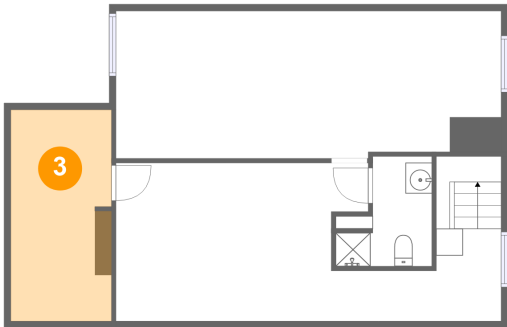


Max Dimensions: 7'2" x 8'2"
Calculated Area: 45 sq. ft
Included: No

Heated: Yes
Finished: Yes
Enclosed: Yes
Contiguous: No
Permitted: Yes
Wet space: Yes
Addition: No
Conversion: No

2717 Cumberland Street Northwest, Roanoke, Virginia 24012, United States

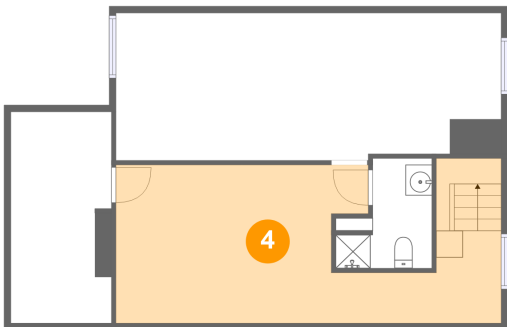
3 Floor 1 - Storage



Max Dimensions: 7'6" x 15'9"
Calculated Area: 118 sq. ft
Included: No

Heated: No
Finished: No
Enclosed: No
Contiguous: Yes
Permitted: Yes
Wet space: No
Addition: No
Conversion: No

4 Floor 1 - Basement



Max Dimensions: 28'9" x 12'3"
Calculated Area: 288 sq. ft
Included: No

Heated: Yes
Finished: No
Enclosed: Yes
Contiguous: Yes
Permitted: Yes
Wet space: No
Addition: No
Conversion: No

5 Floor 2 - Dining Area



Max Dimensions: 8'3" x 12'2"
Calculated Area: 101 sq. ft
Included: Yes

Heated: Yes
Finished: Yes
Enclosed: Yes
Contiguous: Yes
Permitted: Yes
Wet space: No
Addition: No
Conversion: No

2717 Cumberland Street Northwest, Roanoke, Virginia 24012,
United States

6 Floor 2 - Entry



Max Dimensions: 3'6" x 3'6"
Calculated Area: 24 sq. ft
Included: Yes

Heated: Yes
Finished: Yes
Enclosed: Yes
Contiguous: Yes
Permitted: Yes
Wet space: No
Addition: No
Conversion: No

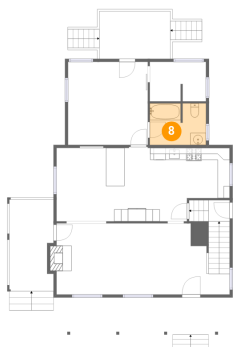
7 Floor 2 - Kitchen



Max Dimensions: 20'6" x 12'4"
Calculated Area: 223 sq. ft
Included: Yes

Heated: Yes
Finished: Yes
Enclosed: Yes
Contiguous: Yes
Permitted: Yes
Wet space: No
Addition: No
Conversion: No

8 Floor 2 - Bath



Max Dimensions: 9'4" x 6'11"
Calculated Area: 63 sq. ft
Included: Yes

Heated: Yes
Finished: Yes
Enclosed: Yes
Contiguous: Yes
Permitted: Yes
Wet space: Yes
Addition: No
Conversion: No

2717 Cumberland Street Northwest, Roanoke, Virginia 24012, United States

9 Floor 2 - Porch



Max Dimensions: 25'1" x 6'2"
Calculated Area: 169 sq. ft
Included: No

Heated: No
Finished: Yes
Enclosed: No
Contiguous: Yes
Permitted: Yes
Wet space: No
Addition: No
Conversion: No

10 Floor 2 - Deck



Max Dimensions: 11'9" x 7'11"
Calculated Area: 126 sq. ft
Included: No

Heated: No
Finished: Yes
Enclosed: No
Contiguous: Yes
Permitted: Yes
Wet space: No
Addition: No
Conversion: No

11 Floor 2 - Covered Patio



Max Dimensions: 7'3" x 15'2"
Calculated Area: 130 sq. ft
Included: No

Heated: No
Finished: Yes
Enclosed: No
Contiguous: Yes
Permitted: Yes
Wet space: No
Addition: No
Conversion: No

2717 Cumberland Street Northwest, Roanoke, Virginia 24012, United States

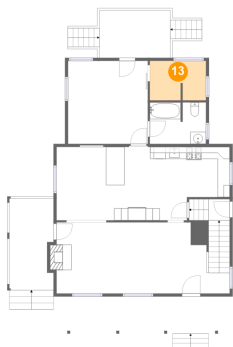
12 Floor 2 - Primary Bedroom



Max Dimensions: 13'3" x 13'9"
Calculated Area: 182 sq. ft
Included: Yes

Heated: Yes
Finished: Yes
Enclosed: Yes
Contiguous: Yes
Permitted: Yes
Wet space: No
Addition: No
Conversion: No

13 Floor 2 - Laundry



Max Dimensions: 9'4" x 6'7"
Calculated Area: 60 sq. ft
Included: Yes

Heated: Yes
Finished: Yes
Enclosed: Yes
Contiguous: Yes
Permitted: Yes
Wet space: No
Addition: No
Conversion: No

14 Floor 2 - Living Room

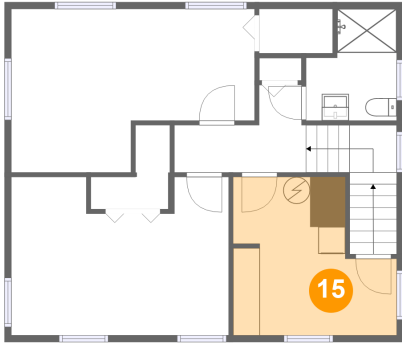


Max Dimensions: 28'9" x 11'10"
Calculated Area: 333 sq. ft
Included: Yes

Heated: Yes
Finished: Yes
Enclosed: Yes
Contiguous: Yes
Permitted: Yes
Wet space: No
Addition: No
Conversion: No

2717 Cumberland Street Northwest, Roanoke, Virginia 24012,
United States

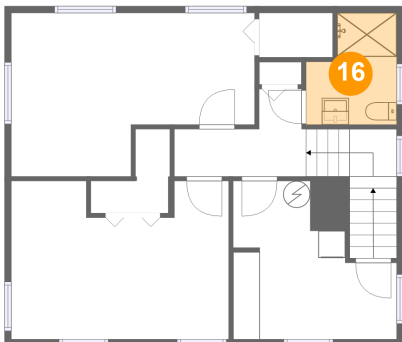
15 Floor 3 - Utility



Max Dimensions: 12'2" x 11'10"
Calculated Area: 120 sq. ft
Included: Yes

Heated: Yes
Finished: Yes
Enclosed: Yes
Contiguous: Yes
Permitted: Yes
Wet space: No
Addition: No
Conversion: No

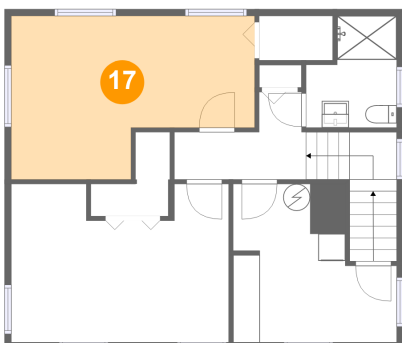
16 Floor 3 - Bath



Max Dimensions: 6'9" x 8'4"
Calculated Area: 48 sq. ft
Included: Yes

Heated: Yes
Finished: Yes
Enclosed: Yes
Contiguous: Yes
Permitted: Yes
Wet space: Yes
Addition: No
Conversion: No

17 Floor 3 - Bedroom

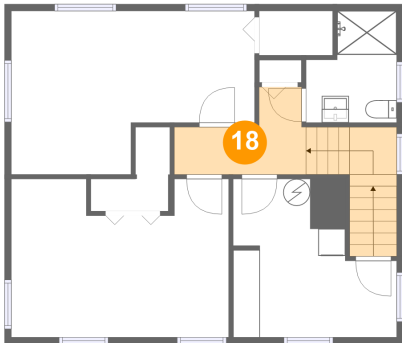


Max Dimensions: 18'2" x 12'2"
Calculated Area: 185 sq. ft
Included: Yes

Heated: Yes
Finished: Yes
Enclosed: Yes
Contiguous: Yes
Permitted: Yes
Wet space: No
Addition: No
Conversion: No

2717 Cumberland Street Northwest, Roanoke, Virginia 24012, United States

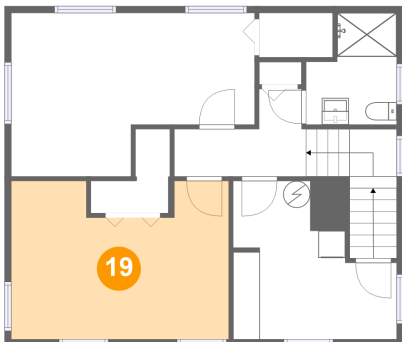
18 Floor 3 - Hall



Max Dimensions: 9'10" x 6'6"
Calculated Area: 89 sq. ft
Included: Yes

Heated: Yes
Finished: Yes
Enclosed: Yes
Contiguous: Yes
Permitted: Yes
Wet space: No
Addition: No
Conversion: No

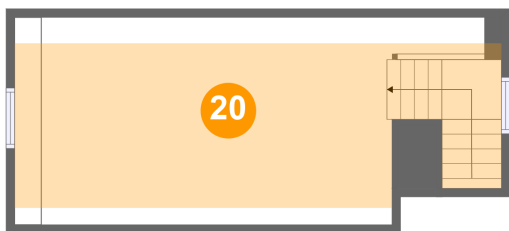
19 Floor 3 - Bedroom



Max Dimensions: 16'3" x 11'10"
Calculated Area: 173 sq. ft
Included: Yes

Heated: Yes
Finished: Yes
Enclosed: Yes
Contiguous: Yes
Permitted: Yes
Wet space: No
Addition: No
Conversion: No

20 Floor 4 - Room



Max Dimensions: 22'3" x 12'3"
Calculated Area: 259 sq. ft
Included: No

Heated: Yes
Finished: No
Enclosed: Yes
Contiguous: Yes
Permitted: Yes
Wet space: No
Addition: No
Conversion: No