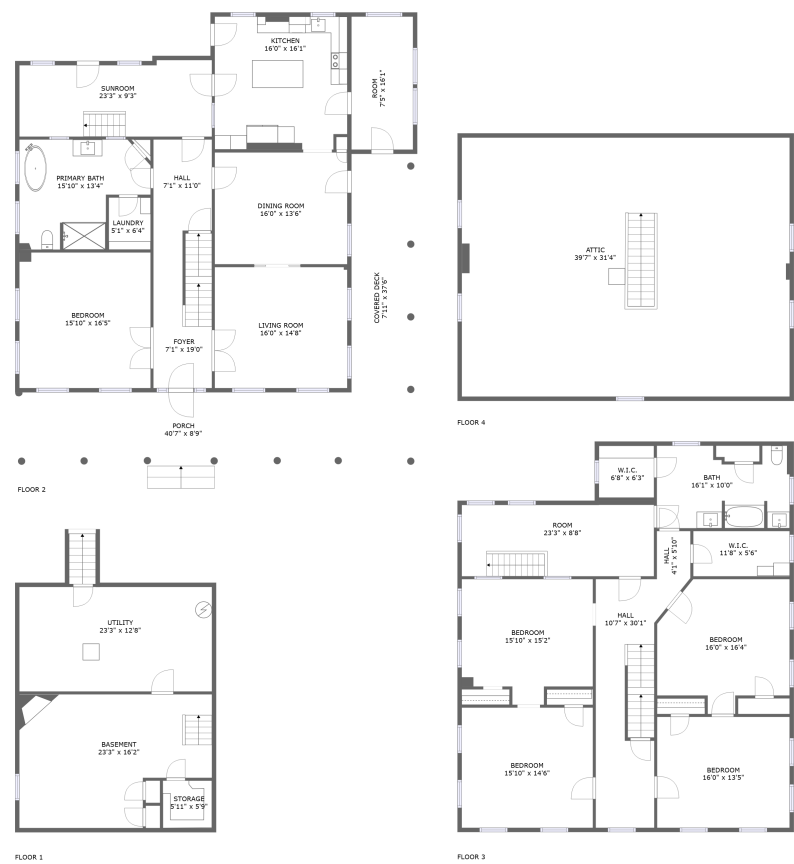


Home report

235 William Fulk Lane, Kearneysville, Jefferson County, West Virginia, United States, 25430



Total Area: 3078 sq. ft

Below Ground: 15 sq. ft, Floor 2: 1558 sq. ft, Floor 3: 1505 sq. ft, Floor 4: 0 sq. ft

Excluded: Storage 36 sq. ft, Basement 333 sq. ft, Utility 295 sq. ft, Undefined 20 sq. ft, Sunroom 205 sq. ft, Porch 354 sq. ft, Covered deck 298 sq. ft, Room 204 sq. ft, Low ceiling 513 sq. ft, Attic 726 sq. ft, Walls: 321 sq. ft

Property summary

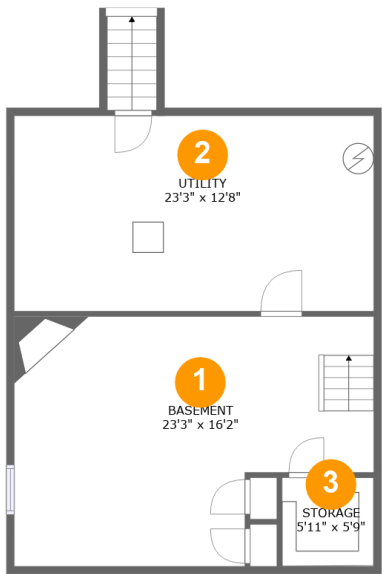
**4**
Floors

**5**
Bedrooms

**2**
Bathrooms

Home report

235 William Fulk Lane, Kearneysville, Jefferson County, West Virginia, United States, 25430



Room dimensions

Floor 1 Below ground Total:15sqft Excluded: 684sqft

#		Max Dimensions	sqft	Included
1	Basement	23'3" x 16'2"	325 sq. ft	No
2	Utility	23'3" x 12'8"	294 sq. ft	No
3	Storage	5'11" x 5'9"	34 sq. ft	No

Home report

235 William Fulk Lane, Kearneysville, Jefferson County, West Virginia, United States, 25430



Room dimensions

Floor 2

Total:1558sqft

Excluded: 857sqft

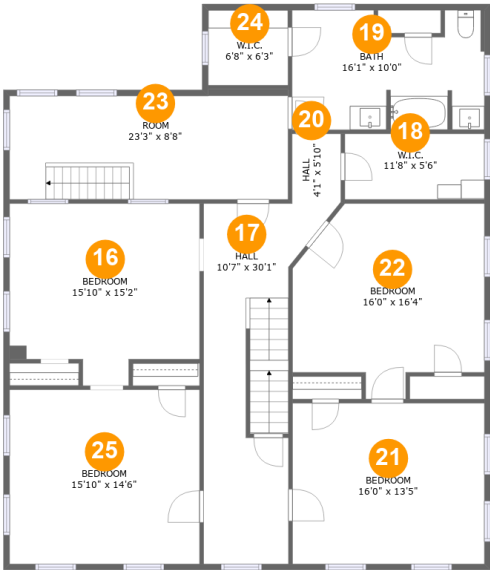
#		Max Dimensions	sqft	Included
4	Kitchen	16'0" x 16'1"	254 sq. ft	Yes
5	Hall	7'1" x 11'0"	78 sq. ft	Yes
6	Porch	40'7" x 8'9"	354 sq. ft	No
7	Sunroom	23'3" x 9'3"	205 sq. ft	No
8	Covered Deck	7'11" x 37'6"	298 sq. ft	No
9	Foyer	7'1" x 19'0"	131 sq. ft	Yes
10	Room	7'5" x 16'1"	120 sq. ft	Yes
11	Living Room	16'0" x 14'8"	234 sq. ft	Yes
12	Laundry	5'1" x 6'4"	32 sq. ft	Yes
13	Primary Bath	15'10" x 13'4"	170 sq. ft	Yes
14	Bedroom	15'10" x 16'5"	260 sq. ft	Yes

Home report

235 William Fulk Lane, Kearneysville, Jefferson County, West Virginia, United States, 25430

#		Max Dimensions	sqft	Included
15	Dining Room	16'0" x 13'6"	216 sq. ft	Yes

235 William Fulk Lane, Kearneysville, Jefferson County, West Virginia, United States, 25430

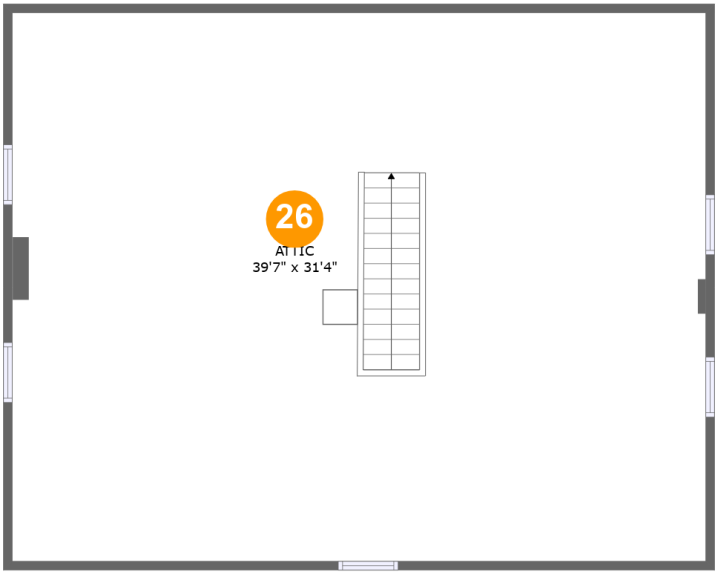


Room dimensions

Floor 3 Total:1505sqft Excluded: 204sqft

#		Max Dimensions	sqft	Included
16	Bedroom	15'10" x 15'2"	214 sq. ft	Yes
17	Hall	10'7" x 30'1"	220 sq. ft	Yes
18	W.I.C.	11'8" x 5'6"	64 sq. ft	Yes
19	Bath	16'1" x 10'0"	145 sq. ft	Yes
20	Hall	4'1" x 5'10"	24 sq. ft	Yes
21	Bedroom	16'0" x 13'5"	215 sq. ft	Yes
22	Bedroom	16'0" x 16'4"	221 sq. ft	Yes
23	Room	23'3" x 8'8"	204 sq. ft	No
24	W.I.C.	6'8" x 6'3"	42 sq. ft	Yes
25	Bedroom	15'10" x 14'6"	230 sq. ft	Yes

235 William Fulk Lane, Kearneysville, Jefferson County, West Virginia, United States, 25430



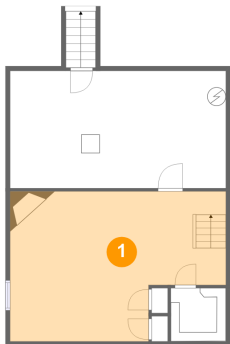
Room dimensions

Floor 4 Total:0sqft Excluded: 1239sqft

#		Max Dimensions	sqft	Included
26	Attic	39'7" x 31'4"	726 sq. ft	No

235 William Fulk Lane, Kearneysville, Jefferson County, West Virginia, United States, 25430

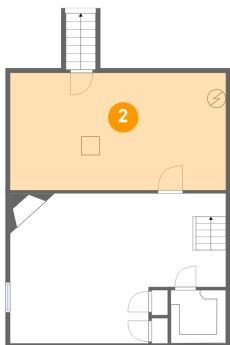
1 Floor 1 - Basement



Max Dimensions: 23'3" x 16'2"
Calculated Area: 325 sq. ft
Included: No

Heated: Yes
Finished: No
Enclosed: Yes
Contiguous: Yes
Permitted: Yes
Wet space: No
Addition: No
Conversion: No

2 Floor 1 - Utility

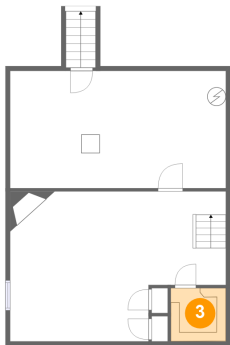


Max Dimensions: 23'3" x 12'8"
Calculated Area: 294 sq. ft
Included: No

Heated: Yes
Finished: No
Enclosed: Yes
Contiguous: Yes
Permitted: Yes
Wet space: No
Addition: No
Conversion: No

235 William Fulk Lane, Kearneysville, Jefferson County, West Virginia, United States, 25430

3 Floor 1 - Storage



Max Dimensions: 5'11" x 5'9"
Calculated Area: 34 sq. ft
Included: No

Heated: No
Finished: No
Enclosed: No
Contiguous: Yes
Permitted: Yes
Wet space: No
Addition: No
Conversion: No

4 Floor 2 - Kitchen



Max Dimensions: 16'0" x 16'1"
Calculated Area: 254 sq. ft
Included: Yes

Heated: Yes
Finished: Yes
Enclosed: Yes
Contiguous: Yes
Permitted: Yes
Wet space: No
Addition: No
Conversion: No

5 Floor 2 - Hall



Max Dimensions: 7'1" x 11'0"
Calculated Area: 78 sq. ft
Included: Yes

Heated: Yes
Finished: Yes
Enclosed: Yes
Contiguous: Yes
Permitted: Yes
Wet space: No
Addition: No
Conversion: No

235 William Fulk Lane, Kearneysville, Jefferson County, West Virginia, United States, 25430

6 Floor 2 - Porch



Max Dimensions: 40'7" x 8'9"
Calculated Area: 354 sq. ft
Included: No

Heated: No
Finished: Yes
Enclosed: No
Contiguous: Yes
Permitted: Yes
Wet space: No
Addition: No
Conversion: No

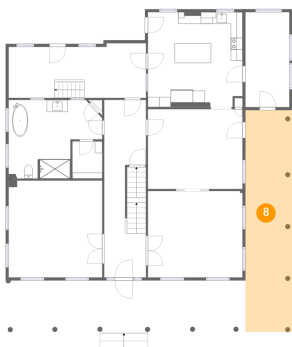
7 Floor 2 - Sunroom



Max Dimensions: 23'3" x 9'3"
Calculated Area: 205 sq. ft
Included: No

Heated: Yes
Finished: No
Enclosed: Yes
Contiguous: Yes
Permitted: Yes
Wet space: No
Addition: No
Conversion: No

8 Floor 2 - Covered Deck



Max Dimensions: 7'11" x 37'6"
Calculated Area: 298 sq. ft
Included: No

Heated: No
Finished: Yes
Enclosed: No
Contiguous: Yes
Permitted: Yes
Wet space: No
Addition: No
Conversion: No

235 William Fulk Lane, Kearneysville, Jefferson County, West Virginia, United States, 25430

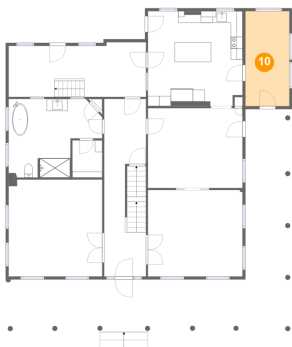
9 Floor 2 - Foyer



Max Dimensions: 7'1" x 19'0"
Calculated Area: 131 sq. ft
Included: Yes

Heated: Yes
Finished: Yes
Enclosed: Yes
Contiguous: Yes
Permitted: Yes
Wet space: No
Addition: No
Conversion: No

10 Floor 2 - Room



Max Dimensions: 7'5" x 16'1"
Calculated Area: 120 sq. ft
Included: Yes

Heated: Yes
Finished: Yes
Enclosed: Yes
Contiguous: Yes
Permitted: Yes
Wet space: No
Addition: No
Conversion: No

11 Floor 2 - Living Room



Max Dimensions: 16'0" x 14'8"
Calculated Area: 234 sq. ft
Included: Yes

Heated: Yes
Finished: Yes
Enclosed: Yes
Contiguous: Yes
Permitted: Yes
Wet space: No
Addition: No
Conversion: No

235 William Fulk Lane, Kearneysville, Jefferson County, West Virginia, United States, 25430

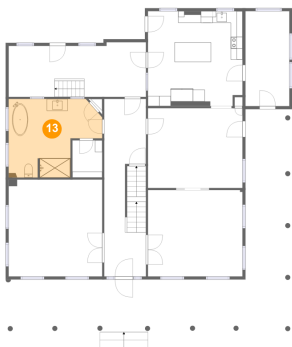
12 Floor 2 - Laundry



Max Dimensions: 5'1" x 6'4"
Calculated Area: 32 sq. ft
Included: Yes

Heated: Yes
Finished: Yes
Enclosed: Yes
Contiguous: Yes
Permitted: Yes
Wet space: No
Addition: No
Conversion: No

13 Floor 2 - Primary Bath



Max Dimensions: 15'10" x 13'4"
Calculated Area: 170 sq. ft
Included: Yes

Heated: Yes
Finished: Yes
Enclosed: Yes
Contiguous: Yes
Permitted: Yes
Wet space: Yes
Addition: No
Conversion: No

14 Floor 2 - Bedroom



Max Dimensions: 15'10" x 16'5"
Calculated Area: 260 sq. ft
Included: Yes

Heated: Yes
Finished: Yes
Enclosed: Yes
Contiguous: Yes
Permitted: Yes
Wet space: No
Addition: No
Conversion: No

235 William Fulk Lane, Kearneysville, Jefferson County, West Virginia, United States, 25430

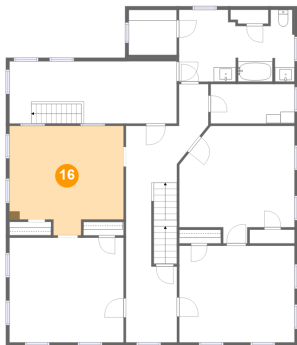
15 Floor 2 - Dining Room



Max Dimensions: 16'0" x 13'6"
Calculated Area: 216 sq. ft
Included: Yes

Heated: Yes
Finished: Yes
Enclosed: Yes
Contiguous: Yes
Permitted: Yes
Wet space: No
Addition: No
Conversion: No

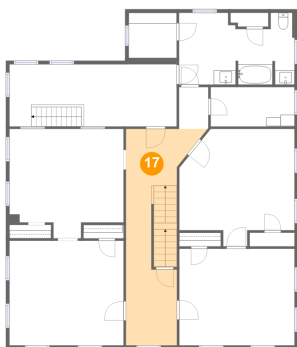
16 Floor 3 - Bedroom



Max Dimensions: 15'10" x 15'2"
Calculated Area: 214 sq. ft
Included: Yes

Heated: Yes
Finished: Yes
Enclosed: Yes
Contiguous: Yes
Permitted: Yes
Wet space: No
Addition: No
Conversion: No

17 Floor 3 - Hall

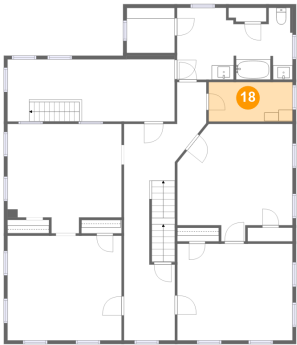


Max Dimensions: 10'7" x 30'1"
Calculated Area: 220 sq. ft
Included: Yes

Heated: Yes
Finished: Yes
Enclosed: Yes
Contiguous: Yes
Permitted: Yes
Wet space: No
Addition: No
Conversion: No

235 William Fulk Lane, Kearneysville, Jefferson County, West Virginia, United States, 25430

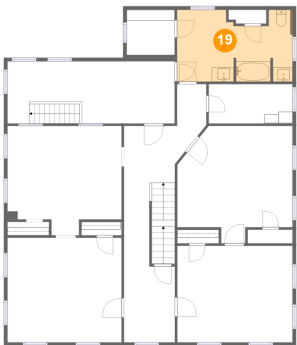
18 Floor 3 - W.I.C.



Max Dimensions: 11'8" x 5'6"
Calculated Area: 64 sq. ft
Included: Yes

Heated: Yes
Finished: Yes
Enclosed: Yes
Contiguous: Yes
Permitted: Yes
Wet space: No
Addition: No
Conversion: No

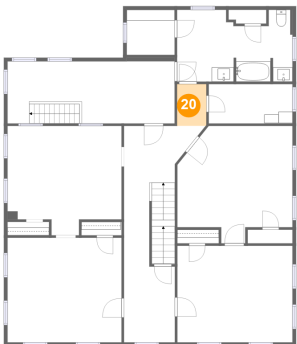
19 Floor 3 - Bath



Max Dimensions: 16'1" x 10'0"
Calculated Area: 145 sq. ft
Included: Yes

Heated: Yes
Finished: Yes
Enclosed: Yes
Contiguous: Yes
Permitted: Yes
Wet space: Yes
Addition: No
Conversion: No

20 Floor 3 - Hall

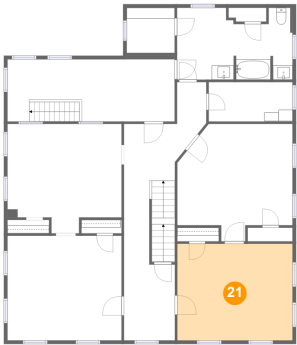


Max Dimensions: 4'1" x 5'10"
Calculated Area: 24 sq. ft
Included: Yes

Heated: Yes
Finished: Yes
Enclosed: Yes
Contiguous: Yes
Permitted: Yes
Wet space: No
Addition: No
Conversion: No

235 William Fulk Lane, Kearneysville, Jefferson County, West Virginia, United States, 25430

21 Floor 3 - Bedroom



Max Dimensions: 16'0" x 13'5"
Calculated Area: 215 sq. ft
Included: Yes

Heated: Yes
Finished: Yes
Enclosed: Yes
Contiguous: Yes
Permitted: Yes
Wet space: No
Addition: No
Conversion: No

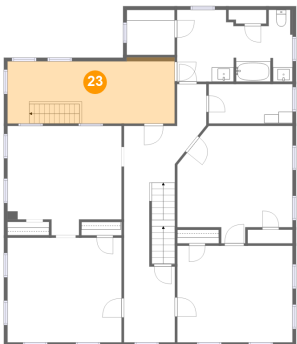
22 Floor 3 - Bedroom



Max Dimensions: 16'0" x 16'4"
Calculated Area: 221 sq. ft
Included: Yes

Heated: Yes
Finished: Yes
Enclosed: Yes
Contiguous: Yes
Permitted: Yes
Wet space: No
Addition: No
Conversion: No

23 Floor 3 - Room

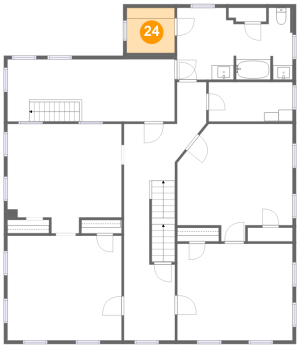


Max Dimensions: 23'3" x 8'8"
Calculated Area: 204 sq. ft
Included: No

Heated: Yes
Finished: No
Enclosed: Yes
Contiguous: Yes
Permitted: Yes
Wet space: No
Addition: No
Conversion: No

235 William Fulk Lane, Kearneysville, Jefferson County, West Virginia, United States, 25430

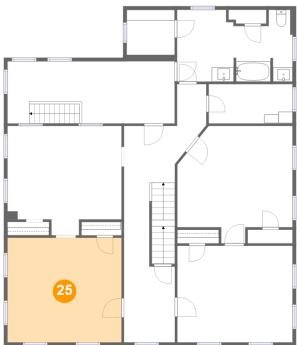
24 Floor 3 - W.I.C.



Max Dimensions: 6'8" x 6'3"
Calculated Area: 42 sq. ft
Included: Yes

Heated: Yes
Finished: Yes
Enclosed: Yes
Contiguous: Yes
Permitted: Yes
Wet space: No
Addition: No
Conversion: No

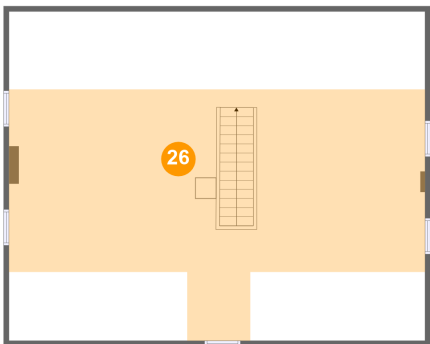
25 Floor 3 - Bedroom



Max Dimensions: 15'10" x 14'6"
Calculated Area: 230 sq. ft
Included: Yes

Heated: Yes
Finished: Yes
Enclosed: Yes
Contiguous: Yes
Permitted: Yes
Wet space: No
Addition: No
Conversion: No

26 Floor 4 - Attic



Max Dimensions: 39'7" x 31'4"
Calculated Area: 726 sq. ft
Included: No

Heated: No
Finished: No
Enclosed: Yes
Contiguous: Yes
Permitted: Yes
Wet space: No
Addition: No
Conversion: No