

Home data report

20712 Epic Ln,Sturgis,SD,US




Total Area: 1778 sq. ft


1st Floor: 848 sq. ft, 2nd Floor: 930 sq. ft

Excluded: Garage 1274 sq. ft, Open to below 197 sq. ft, Low ceiling 80 sq. ft, Walls: 257 sq. ft

Property summary

 2 Floors

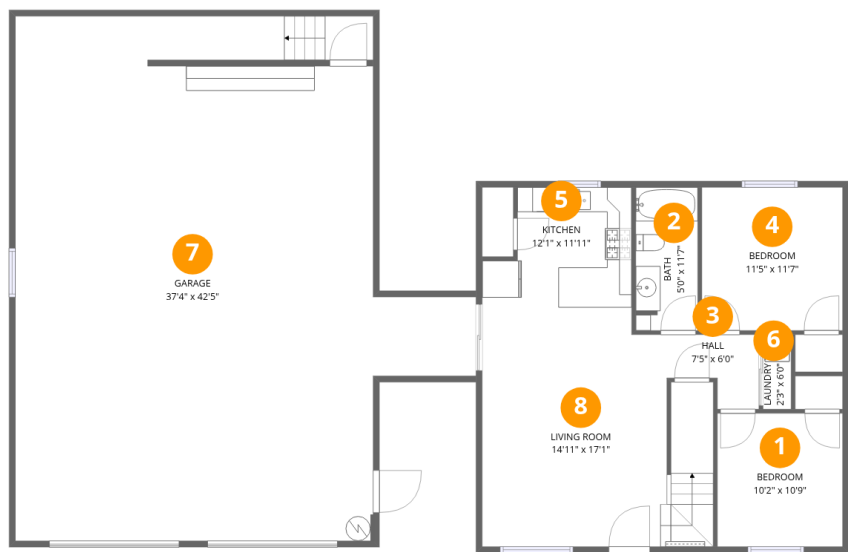
 4 Bedrooms

 2 Bathrooms

 1 Garages

Home data report

20712 Epic Ln,Sturgis,SD,US



Room dimensions

Floor 1 Total:848sqft Excluded: 1274sqft

#		Dimensions	sqft	Counted as living area
1	Bedroom	10'2" x 10'9"	109 sq. ft	Yes
2	Bath	5'0" x 11'7"	58 sq. ft	Yes
3	Hall	7'5" x 6'0"	35 sq. ft	Yes
4	Bedroom	11'5" x 11'7"	132 sq. ft	Yes
5	Kitchen	12'1" x 11'11"	127 sq. ft	Yes
6	Laundry	2'3" x 6'0"	14 sq. ft	Yes
7	Garage	37'4" x 42'5"	1274 sq. ft	No
8	Living Room	14'11" x 17'1"	304 sq. ft	Yes

Home data report

20712 Epic Ln,Sturgis,SD,US

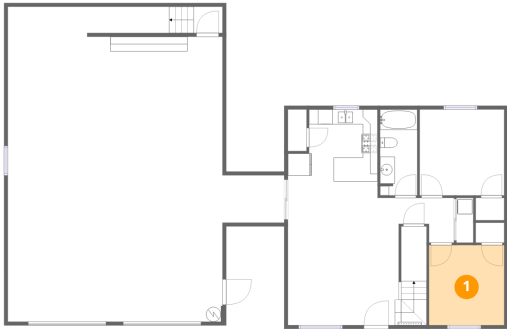


Room dimensions

Floor 2 Total:930sqft   Excluded: 277sqft

#		Dimensions	sqft	Counted as living area
9	Bath	6'1" x 9'7"	58 sq. ft	Yes
10	Primary Bedroom	18'10" x 29'1"	341 sq. ft	Yes
11	Open To Below	14'5" x 13'4"	197 sq. ft	No
12	Bedroom	13'11" x 16'1"	210 sq. ft	Yes
13	Family Room	13'11" x 26'0"	298 sq. ft	Yes

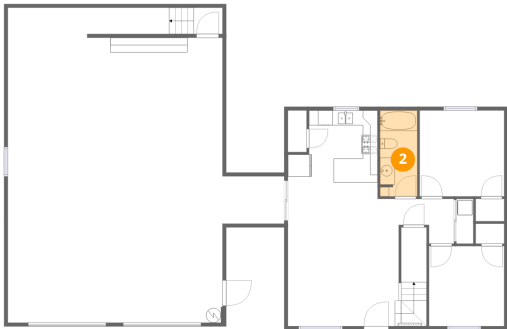
1 Floor 1 - Bedroom



Dimensions: 10'2" x 10'9"  
Area: 109 sq. ft  
Counted as living area: Yes

Heated: Yes  
Finished: Yes  
Enclosed: Yes  
Contiguous: Yes  
Permitted: Yes  
Wet space: No  
Addition: No  
Conversion: No

2 Floor 1 - Bath



Dimensions: 5'0" x 11'7"  
Area: 58 sq. ft  
Counted as living area: Yes

Heated: Yes  
Finished: Yes  
Enclosed: Yes  
Contiguous: Yes  
Permitted: Yes  
Wet space: Yes  
Addition: No  
Conversion: No

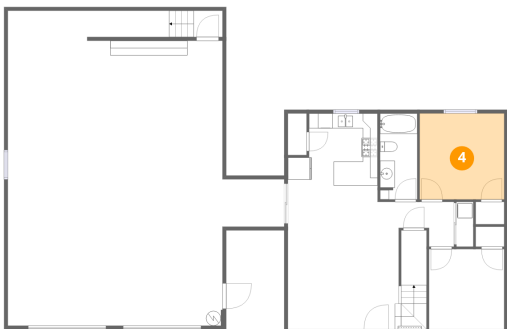
3 Floor 1 - Hall



Dimensions: 7'5" x 6'0"  
Area: 35 sq. ft  
Counted as living area: Yes

Heated: Yes  
Finished: Yes  
Enclosed: Yes  
Contiguous: Yes  
Permitted: Yes  
Wet space: No  
Addition: No  
Conversion: No

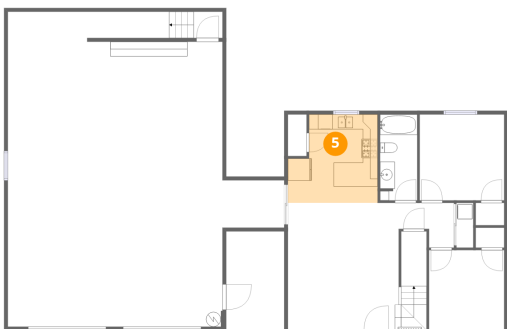
4 Floor 1 - Bedroom



Dimensions: 11'5" x 11'7"  
Area: 132 sq. ft  
Counted as living area: Yes

Heated: Yes  
Finished: Yes  
Enclosed: Yes  
Contiguous: Yes  
Permitted: Yes  
Wet space: No  
Addition: No  
Conversion: No

5 Floor 1 - Kitchen



Dimensions: 12'1" x 11'11"  
Area: 127 sq. ft  
Counted as living area: Yes

Heated: Yes  
Finished: Yes  
Enclosed: Yes  
Contiguous: Yes  
Permitted: Yes  
Wet space: No  
Addition: No  
Conversion: No

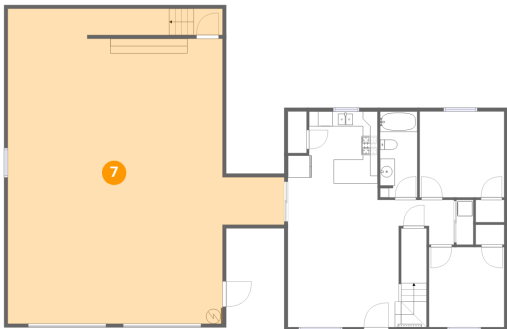
6 Floor 1 - Laundry



Dimensions: 2'3" x 6'0"  
Area: 14 sq. ft  
Counted as living area: Yes

Heated: Yes  
Finished: Yes  
Enclosed: Yes  
Contiguous: Yes  
Permitted: Yes  
Wet space: No  
Addition: No  
Conversion: No

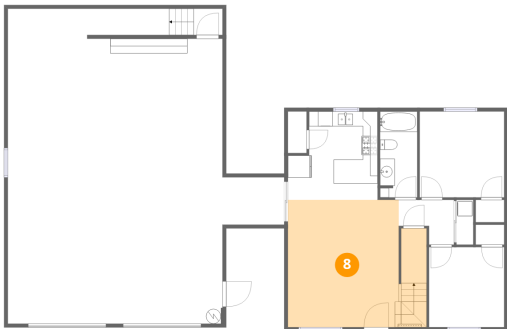
7 Floor 1 - Garage



Dimensions: 37'4" x 42'5"  
Area: 1274 sq. ft  
Counted as living area: No

Heated: No  
Finished: No  
Enclosed: Yes  
Contiguous: Yes  
Permitted: Yes  
Wet space: No  
Addition: No  
Conversion: No

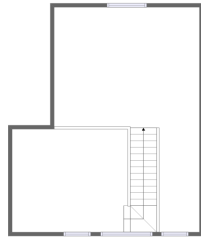
8 Floor 1 - Living Room



Dimensions: 14'11" x 17'1"  
Area: 304 sq. ft  
Counted as living area: Yes

Heated: Yes  
Finished: Yes  
Enclosed: Yes  
Contiguous: Yes  
Permitted: Yes  
Wet space: No  
Addition: No  
Conversion: No

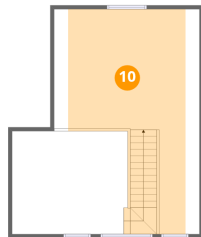
## 9 Floor 2 - Bath



Dimensions: 6'1" x 9'7"  
Area: 58 sq. ft  
Counted as living area: Yes

Heated: Yes  
Finished: Yes  
Enclosed: Yes  
Contiguous: Yes  
Permitted: Yes  
Wet space: Yes  
Addition: No  
Conversion: No

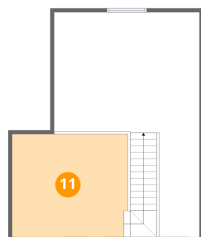
## 10 Floor 2 - Primary Bedroom



Dimensions: 18'10" x 29'1"  
Area: 341 sq. ft  
Counted as living area: Yes

Heated: Yes  
Finished: Yes  
Enclosed: Yes  
Contiguous: Yes  
Permitted: Yes  
Wet space: No  
Addition: No  
Conversion: No

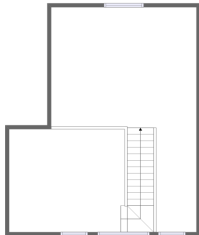
## 11 Floor 2 - Open To Below



Dimensions: 14'5" x 13'4"  
Area: 197 sq. ft  
Counted as living area: No

Heated: No  
Finished: No  
Enclosed: No  
Contiguous: Yes  
Permitted: No  
Wet space: No  
Addition: No  
Conversion: No

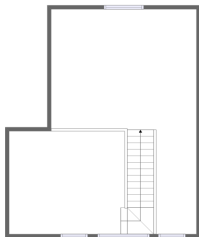
12 Floor 2 - Bedroom



Dimensions: 13'11" x 16'1"  
Area: 210 sq. ft  
Counted as living area: Yes

Heated: Yes  
Finished: Yes  
Enclosed: Yes  
Contiguous: Yes  
Permitted: Yes  
Wet space: No  
Addition: No  
Conversion: No

13 Floor 2 - Family Room



Dimensions: 13'11" x 26'0"  
Area: 298 sq. ft  
Counted as living area: Yes

Heated: Yes  
Finished: Yes  
Enclosed: Yes  
Contiguous: Yes  
Permitted: Yes  
Wet space: No  
Addition: No  
Conversion: No