



Home report


2820 Harbison Road, North Gower - Kars, Richmond, Ontario, Canada, K0A 2Z0




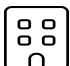
Property summary


**1** Garages


**4** Bedrooms

**2** Bathrooms

**1** Half baths

**3** Floors

**2,313** Gross living area sqft

**4,446** Total sqft

2820 Harbison Road, North Gower - Kars, Richmond, Ontario,
Canada, K0A 2Z0



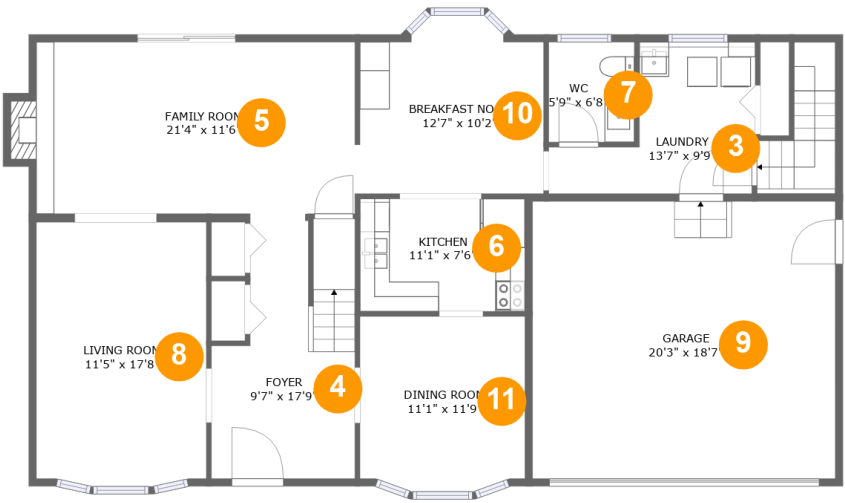
Room dimensions

Floor 1 Total sqft: 1719 Living area: 0

#		Max Dimensions	sqft	Included
1	Basement	20'3" x 23'3"	471 sq. ft	No
2	Basement	49'4" x 29'2"	1137 sq. ft	No

Home report

2820 Harbison Road, North Gower - Kars, Richmond, Ontario,
Canada, K0A 2Z0



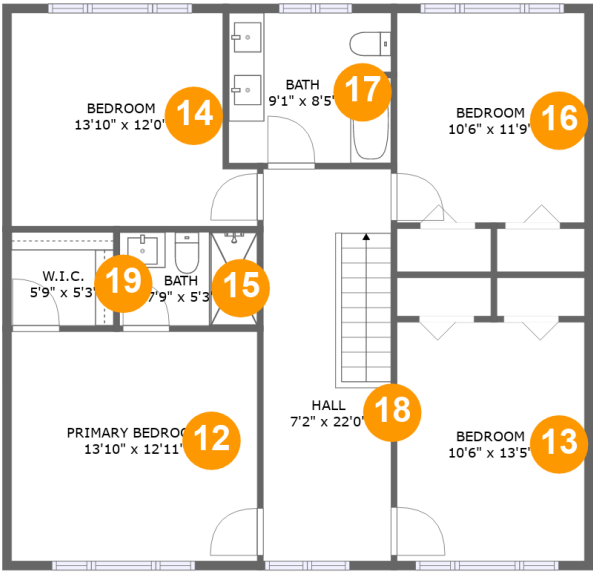
Room dimensions

Floor 2 Total sqft: 1673 Living area: 1259

#		Max Dimensions	sqft	Included
3	Laundry	13'7" x 9'9"	97 sq. ft	Yes
4	Foyer	9'7" x 17'9"	144 sq. ft	Yes
5	Family Room	21'4" x 11'6"	252 sq. ft	Yes
6	Kitchen	11'1" x 7'6"	83 sq. ft	Yes
7	WC	5'9" x 6'8"	38 sq. ft	Yes
8	Living Room	11'5" x 17'8"	199 sq. ft	Yes
9	Garage	20'3" x 18'7"	376 sq. ft	No
10	Breakfast Nook	12'7" x 10'2"	126 sq. ft	Yes
11	Dining Room	11'1" x 11'9"	126 sq. ft	Yes

Home report

2820 Harbison Road, North Gower - Kars, Richmond, Ontario,
Canada, K0A 2Z0



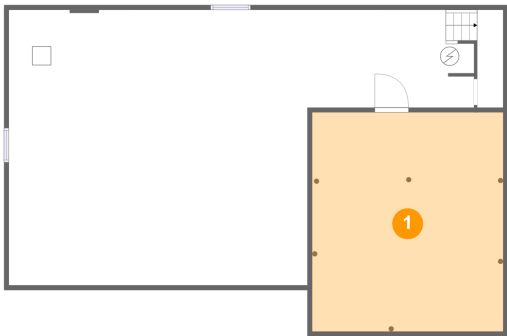
Room dimensions

Floor 3 Total sqft: 1054 Living area: 1054

#		Max Dimensions	sqft	Included
12	Primary Bedroom	13'10" x 12'11"	178 sq. ft	Yes
13	Bedroom	10'6" x 13'5"	141 sq. ft	Yes
14	Bedroom	13'10" x 12'0"	148 sq. ft	Yes
15	Bath	7'9" x 5'3"	41 sq. ft	Yes
16	Bedroom	10'6" x 11'9"	124 sq. ft	Yes
17	Bath	9'1" x 8'5"	76 sq. ft	Yes
18	Hall	7'2" x 22'0"	158 sq. ft	Yes
19	W.I.C.	5'9" x 5'3"	30 sq. ft	Yes

2820 Harbison Road, North Gower - Kars, Richmond, Ontario,
Canada, K0A 2Z0

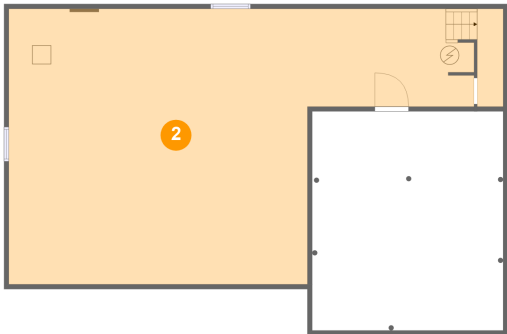
1 Floor 1 - Basement



Max Dimensions: 20'3" x 23'3"
Calculated Area: 471 sq. ft
Included: No

Heated: Yes
Finished: No
Enclosed: Yes
Contiguous: Yes
Permitted: Yes
Wet space: No
Addition: No
Conversion: No

2 Floor 1 - Basement



Max Dimensions: 49'4" x 29'2"
Calculated Area: 1137 sq. ft
Included: No

Heated: Yes
Finished: No
Enclosed: Yes
Contiguous: Yes
Permitted: Yes
Wet space: No
Addition: No
Conversion: No

2820 Harbison Road, North Gower - Kars, Richmond, Ontario,
Canada, K0A 2Z0

3 Floor 2 - Laundry



Max Dimensions: 13'7" x 9'9"
Calculated Area: 97 sq. ft
Included: Yes

Heated: Yes
Finished: Yes
Enclosed: Yes
Contiguous: Yes
Permitted: Yes
Wet space: No
Addition: No
Conversion: No

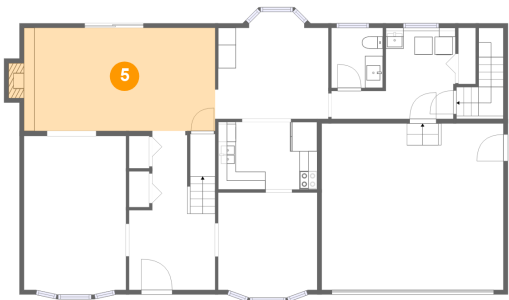
4 Floor 2 - Foyer



Max Dimensions: 9'7" x 17'9"
Calculated Area: 144 sq. ft
Included: Yes

Heated: Yes
Finished: Yes
Enclosed: Yes
Contiguous: Yes
Permitted: Yes
Wet space: No
Addition: No
Conversion: No

5 Floor 2 - Family Room

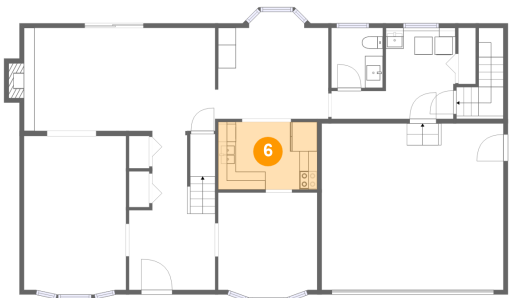


Max Dimensions: 21'4" x 11'6"
Calculated Area: 252 sq. ft
Included: Yes

Heated: Yes
Finished: Yes
Enclosed: Yes
Contiguous: Yes
Permitted: Yes
Wet space: No
Addition: No
Conversion: No

2820 Harbison Road, North Gower - Kars, Richmond, Ontario,
Canada, K0A 2Z0

6 Floor 2 - Kitchen



Max Dimensions: 11'1" x 7'6"
Calculated Area: 83 sq. ft
Included: Yes

Heated: Yes
Finished: Yes
Enclosed: Yes
Contiguous: Yes
Permitted: Yes
Wet space: No
Addition: No
Conversion: No

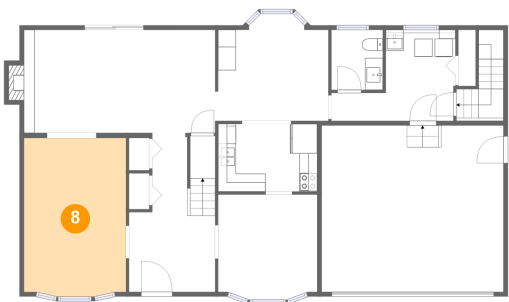
7 Floor 2 - WC



Max Dimensions: 5'9" x 6'8"
Calculated Area: 38 sq. ft
Included: Yes

Heated: Yes
Finished: Yes
Enclosed: Yes
Contiguous: Yes
Permitted: Yes
Wet space: Yes
Addition: No
Conversion: No

8 Floor 2 - Living Room



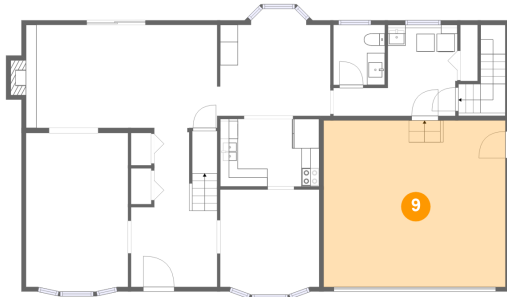
Max Dimensions: 11'5" x 17'8"
Calculated Area: 199 sq. ft
Included: Yes

Heated: Yes
Finished: Yes
Enclosed: Yes
Contiguous: Yes
Permitted: Yes
Wet space: No
Addition: No
Conversion: No

Home report

2820 Harbison Road, North Gower - Kars, Richmond, Ontario,
Canada, K0A 2Z0

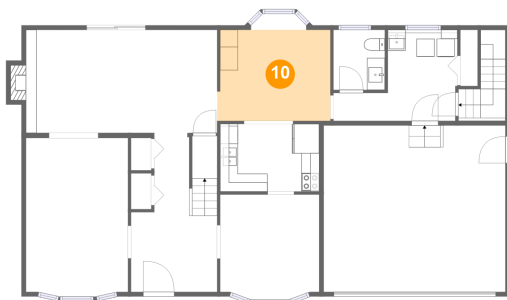
9 Floor 2 - Garage



Max Dimensions: 20'3" x 18'7"
Calculated Area: 376 sq. ft
Included: No

Heated: No
Finished: No
Enclosed: Yes
Contiguous: Yes
Permitted: Yes
Wet space: No
Addition: No
Conversion: No

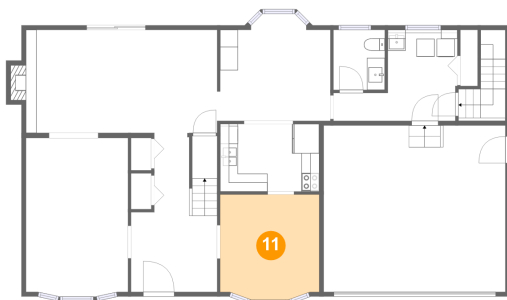
10 Floor 2 - Breakfast Nook



Max Dimensions: 12'7" x 10'2"
Calculated Area: 126 sq. ft
Included: Yes

Heated: Yes
Finished: Yes
Enclosed: Yes
Contiguous: Yes
Permitted: Yes
Wet space: No
Addition: No
Conversion: No

11 Floor 2 - Dining Room

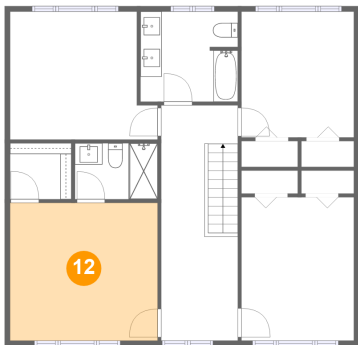


Max Dimensions: 11'1" x 11'9"
Calculated Area: 126 sq. ft
Included: Yes

Heated: Yes
Finished: Yes
Enclosed: Yes
Contiguous: Yes
Permitted: Yes
Wet space: No
Addition: No
Conversion: No

2820 Harbison Road, North Gower - Kars, Richmond, Ontario,
Canada, K0A 2Z0

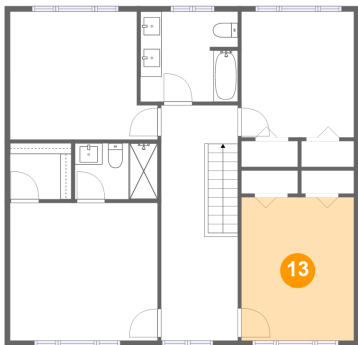
12 Floor 3 - Primary Bedroom



Max Dimensions: 13'10" x 12'11"
Calculated Area: 178 sq. ft
Included: Yes

Heated: Yes
Finished: Yes
Enclosed: Yes
Contiguous: Yes
Permitted: Yes
Wet space: No
Addition: No
Conversion: No

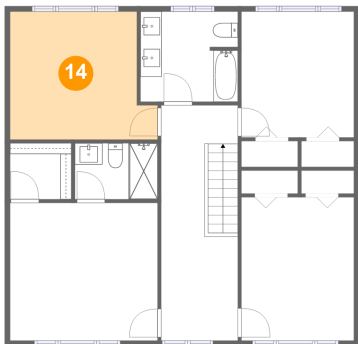
13 Floor 3 - Bedroom



Max Dimensions: 10'6" x 13'5"
Calculated Area: 141 sq. ft
Included: Yes

Heated: Yes
Finished: Yes
Enclosed: Yes
Contiguous: Yes
Permitted: Yes
Wet space: No
Addition: No
Conversion: No

14 Floor 3 - Bedroom

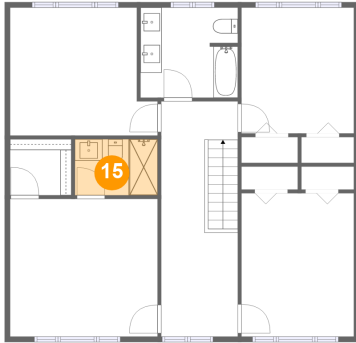


Max Dimensions: 13'10" x 12'0"
Calculated Area: 148 sq. ft
Included: Yes

Heated: Yes
Finished: Yes
Enclosed: Yes
Contiguous: Yes
Permitted: Yes
Wet space: No
Addition: No
Conversion: No

2820 Harbison Road, North Gower - Kars, Richmond, Ontario,
Canada, K0A 2Z0

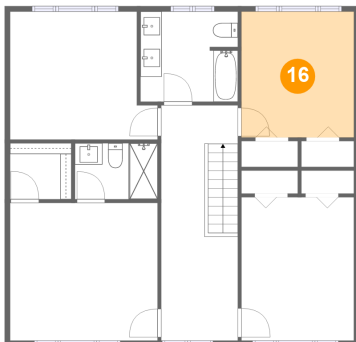
15 Floor 3 - Bath



Max Dimensions: 7'9" x 5'3"
Calculated Area: 41 sq. ft
Included: Yes

Heated: Yes
Finished: Yes
Enclosed: Yes
Contiguous: Yes
Permitted: Yes
Wet space: Yes
Addition: No
Conversion: No

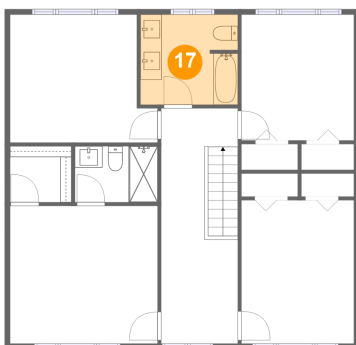
16 Floor 3 - Bedroom



Max Dimensions: 10'6" x 11'9"
Calculated Area: 124 sq. ft
Included: Yes

Heated: Yes
Finished: Yes
Enclosed: Yes
Contiguous: Yes
Permitted: Yes
Wet space: No
Addition: No
Conversion: No

17 Floor 3 - Bath

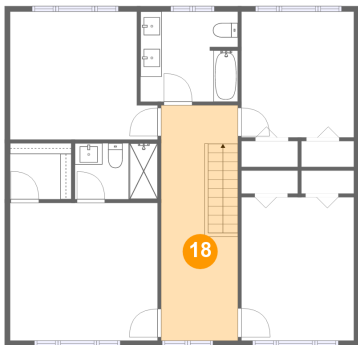


Max Dimensions: 9'1" x 8'5"
Calculated Area: 76 sq. ft
Included: Yes

Heated: Yes
Finished: Yes
Enclosed: Yes
Contiguous: Yes
Permitted: Yes
Wet space: Yes
Addition: No
Conversion: No

2820 Harbison Road, North Gower - Kars, Richmond, Ontario,
Canada, K0A 2Z0

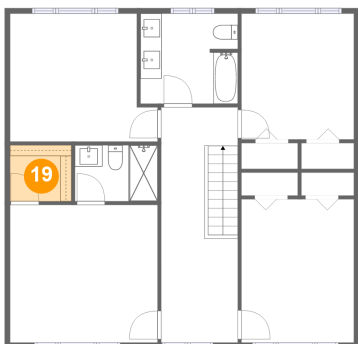
18 Floor 3 - Hall



Max Dimensions: 7'2" x 22'0"
Calculated Area: 158 sq. ft
Included: Yes

Heated: Yes
Finished: Yes
Enclosed: Yes
Contiguous: Yes
Permitted: Yes
Wet space: No
Addition: No
Conversion: No

19 Floor 3 - W.I.C.



Max Dimensions: 5'9" x 5'3"
Calculated Area: 30 sq. ft
Included: Yes

Heated: Yes
Finished: Yes
Enclosed: Yes
Contiguous: Yes
Permitted: Yes
Wet space: No
Addition: No
Conversion: No