

Home report

10417 Windlass Run Road, Middle River, Baltimore County, Maryland, United States, 21220




Total Area: 3723 sq. ft

Below Ground: 1081 sq. ft, Floor 2: 1418 sq. ft, Floor 3: 1224 sq. ft

Excluded: Utility 224 sq. ft, Garage 444 sq. ft, Fireplace 12 sq. ft, Open to below 77 sq. ft, Walls: 279 sq. ft

Property summary

 **3** Floors

 **4** Bedrooms

 **3** Bathrooms

Home report

**10417 Windlass Run Road, Middle River, Baltimore County,
Maryland, United States, 21220**



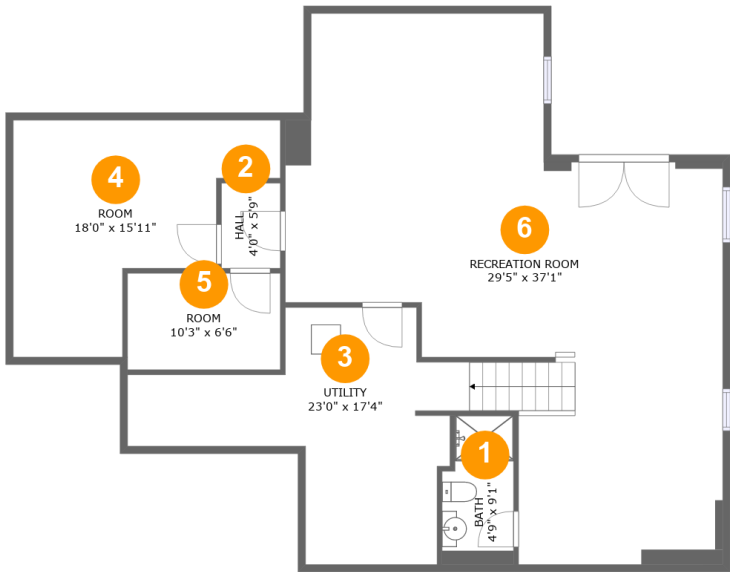
1
Half baths



1
Garages

Home report

10417 Windlass Run Road, Middle River, Baltimore County,
Maryland, United States, 21220



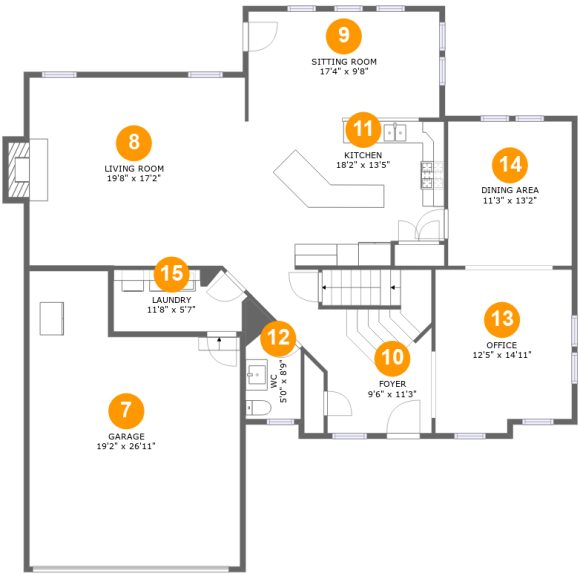
Room dimensions

Floor 1 Below ground Total:1081sqft Excluded: 224sqft

#		Max Dimensions	sqft	Included
1	Bath	4'9" x 9'1"	45 sq. ft	Yes
2	Hall	4'0" x 5'9"	23 sq. ft	Yes
3	Utility	23'0" x 17'4"	224 sq. ft	No
4	Room	18'0" x 15'11"	197 sq. ft	Yes
5	Room	10'3" x 6'6"	67 sq. ft	Yes
6	Recreation Room	29'5" x 37'1"	715 sq. ft	Yes

Home report

10417 Windlass Run Road, Middle River, Baltimore County,
Maryland, United States, 21220



Room dimensions

Floor 2 Total:1418sqft Excluded: 456sqft

#		Max Dimensions	sqft	Included
7	Garage	19'2" x 26'11"	444 sq. ft	No
8	Living Room	19'8" x 17'2"	347 sq. ft	Yes
9	Sitting Room	17'4" x 9'8"	169 sq. ft	Yes
10	Foyer	9'6" x 11'3"	182 sq. ft	Yes
11	Kitchen	18'2" x 13'5"	233 sq. ft	Yes
12	WC	5'0" x 8'9"	44 sq. ft	Yes
13	Office	12'5" x 14'11"	178 sq. ft	Yes
14	Dining Area	11'3" x 13'2"	148 sq. ft	Yes
15	Laundry	11'8" x 5'7"	64 sq. ft	Yes

**10417 Windlass Run Road, Middle River, Baltimore County,
Maryland, United States, 21220**

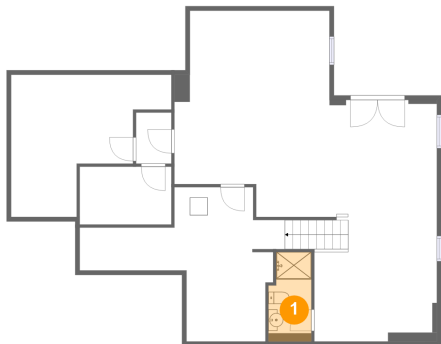


Total:1224sqft Excluded: 77sqft

Scan captured on Wed, 27 Aug 2025 20:23:22 GMT

10417 Windlass Run Road, Middle River, Baltimore County,
Maryland, United States, 21220

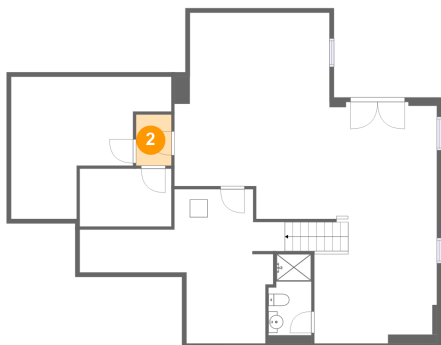
1 Floor 1 - Bath



Max Dimensions: 4'9" x 9'1"
Calculated Area: 45 sq. ft
Included: Yes

Heated: Yes
Finished: Yes
Enclosed: Yes
Contiguous: Yes
Permitted: Yes
Wet space: Yes
Addition: No
Conversion: No

2 Floor 1 - Hall

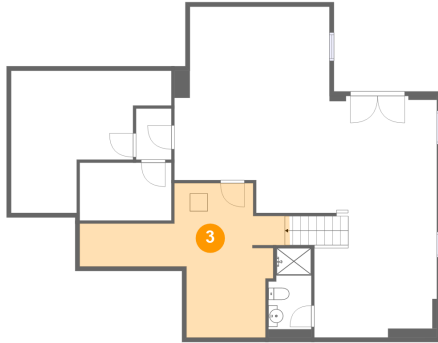


Max Dimensions: 4'0" x 5'9"
Calculated Area: 23 sq. ft
Included: Yes

Heated: Yes
Finished: Yes
Enclosed: Yes
Contiguous: Yes
Permitted: Yes
Wet space: No
Addition: No
Conversion: No

10417 Windlass Run Road, Middle River, Baltimore County,
Maryland, United States, 21220

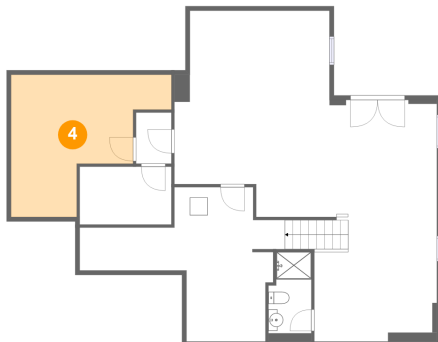
3 Floor 1 - Utility



Max Dimensions: 23'0" x 17'4"
Calculated Area: 224 sq. ft
Included: No

Heated: Yes
Finished: No
Enclosed: Yes
Contiguous: Yes
Permitted: Yes
Wet space: No
Addition: No
Conversion: No

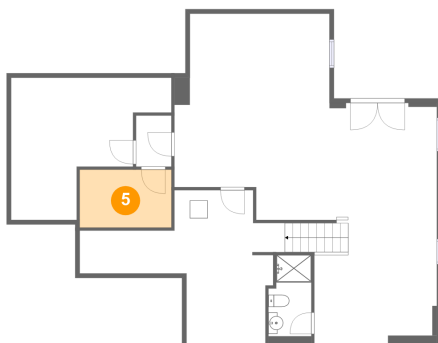
4 Floor 1 - Room



Max Dimensions: 18'0" x 15'11"
Calculated Area: 197 sq. ft
Included: Yes

Heated: Yes
Finished: Yes
Enclosed: Yes
Contiguous: Yes
Permitted: Yes
Wet space: No
Addition: No
Conversion: No

5 Floor 1 - Room

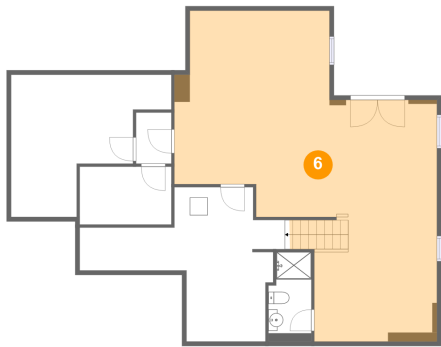


Max Dimensions: 10'3" x 6'6"
Calculated Area: 67 sq. ft
Included: Yes

Heated: Yes
Finished: Yes
Enclosed: Yes
Contiguous: Yes
Permitted: Yes
Wet space: No
Addition: No
Conversion: No

10417 Windlass Run Road, Middle River, Baltimore County,
Maryland, United States, 21220

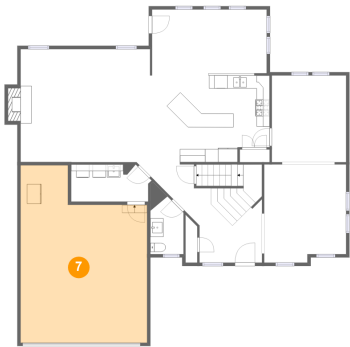
6 Floor 1 - Recreation Room



Max Dimensions: 29'5" x 37'1"
Calculated Area: 715 sq. ft
Included: Yes

Heated: Yes
Finished: Yes
Enclosed: Yes
Contiguous: Yes
Permitted: Yes
Wet space: No
Addition: No
Conversion: No

7 Floor 2 - Garage



Max Dimensions: 19'2" x 26'11"
Calculated Area: 444 sq. ft
Included: No

Heated: No
Finished: No
Enclosed: Yes
Contiguous: Yes
Permitted: Yes
Wet space: No
Addition: No
Conversion: No

8 Floor 2 - Living Room



Max Dimensions: 19'8" x 17'2"
Calculated Area: 347 sq. ft
Included: Yes

Heated: Yes
Finished: Yes
Enclosed: Yes
Contiguous: Yes
Permitted: Yes
Wet space: No
Addition: No
Conversion: No

10417 Windlass Run Road, Middle River, Baltimore County,
Maryland, United States, 21220

9 Floor 2 - Sitting Room



Max Dimensions: 17'4" x 9'8"
Calculated Area: 169 sq. ft
Included: Yes

Heated: Yes
Finished: Yes
Enclosed: Yes
Contiguous: Yes
Permitted: Yes
Wet space: No
Addition: No
Conversion: No

10 Floor 2 - Foyer



Max Dimensions: 9'6" x 11'3"
Calculated Area: 182 sq. ft
Included: Yes

Heated: Yes
Finished: Yes
Enclosed: Yes
Contiguous: Yes
Permitted: Yes
Wet space: No
Addition: No
Conversion: No

11 Floor 2 - Kitchen



Max Dimensions: 18'2" x 13'5"
Calculated Area: 233 sq. ft
Included: Yes

Heated: Yes
Finished: Yes
Enclosed: Yes
Contiguous: Yes
Permitted: Yes
Wet space: No
Addition: No
Conversion: No

10417 Windlass Run Road, Middle River, Baltimore County,
Maryland, United States, 21220

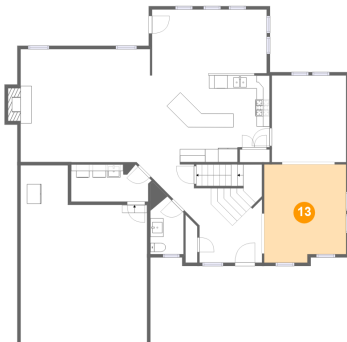
12 Floor 2 - WC



Max Dimensions: 5'0" x 8'9"
Calculated Area: 44 sq. ft
Included: Yes

Heated: Yes
Finished: Yes
Enclosed: Yes
Contiguous: Yes
Permitted: Yes
Wet space: Yes
Addition: No
Conversion: No

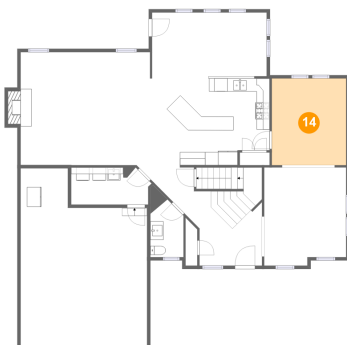
13 Floor 2 - Office



Max Dimensions: 12'5" x
14'11"
Calculated Area: 178 sq. ft
Included: Yes

Heated: Yes
Finished: Yes
Enclosed: Yes
Contiguous:
Yes
Permitted: Yes
Wet space: No
Addition: No
Conversion: No

14 Floor 2 - Dining Area



Max Dimensions: 11'3" x
13'2"
Calculated Area: 148 sq. ft
Included: Yes

Heated: Yes
Finished: Yes
Enclosed: Yes
Contiguous:
Yes
Permitted: Yes
Wet space: No
Addition: No
Conversion: No

10417 Windlass Run Road, Middle River, Baltimore County,
Maryland, United States, 21220

15 Floor 2 - Laundry



Max Dimensions: 11'8" x 5'7"
Calculated Area: 64 sq. ft
Included: Yes

Heated: Yes
Finished: Yes
Enclosed: Yes
Contiguous: Yes
Permitted: Yes
Wet space: No
Addition: No
Conversion: No

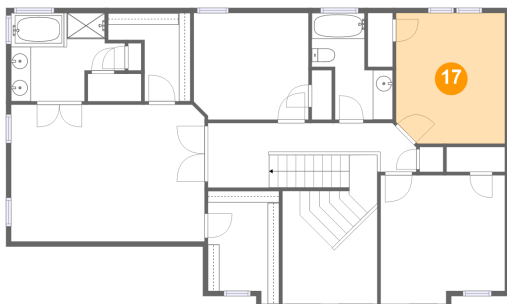
16 Floor 3 - Primary Bedroom



Max Dimensions: 19'4" x 13'8"
Calculated Area: 264 sq. ft
Included: Yes

Heated: Yes
Finished: Yes
Enclosed: Yes
Contiguous: Yes
Permitted: Yes
Wet space: No
Addition: No
Conversion: No

17 Floor 3 - Bedroom

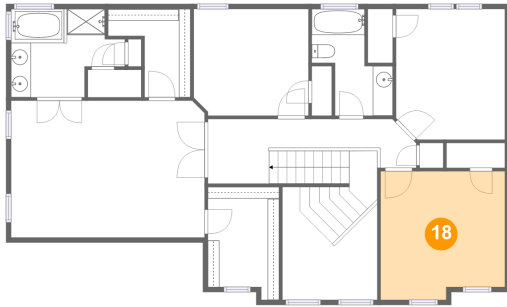


Max Dimensions: 10'11" x 13'1"
Calculated Area: 140 sq. ft
Included: Yes

Heated: Yes
Finished: Yes
Enclosed: Yes
Contiguous: Yes
Permitted: Yes
Wet space: No
Addition: No
Conversion: No

10417 Windlass Run Road, Middle River, Baltimore County,
Maryland, United States, 21220

18 Floor 3 - Bedroom



Max Dimensions: 12'5" x 12'10"
Calculated Area: 152 sq. ft
Included: Yes

Heated: Yes
Finished: Yes
Enclosed: Yes
Contiguous: Yes
Permitted: Yes
Wet space: No
Addition: No
Conversion: No

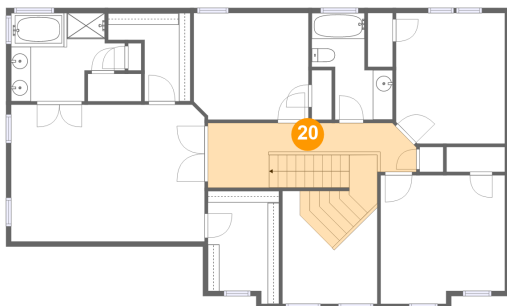
19 Floor 3 - Bath



Max Dimensions: 5'9" x 10'8"
Calculated Area: 58 sq. ft
Included: Yes

Heated: Yes
Finished: Yes
Enclosed: Yes
Contiguous: Yes
Permitted: Yes
Wet space: Yes
Addition: No
Conversion: No

20 Floor 3 - Hall



Max Dimensions: 20'10" x 6'5"
Calculated Area: 157 sq. ft
Included: Yes

Heated: Yes
Finished: Yes
Enclosed: Yes
Contiguous: Yes
Permitted: Yes
Wet space: No
Addition: No
Conversion: No

10417 Windlass Run Road, Middle River, Baltimore County,
Maryland, United States, 21220

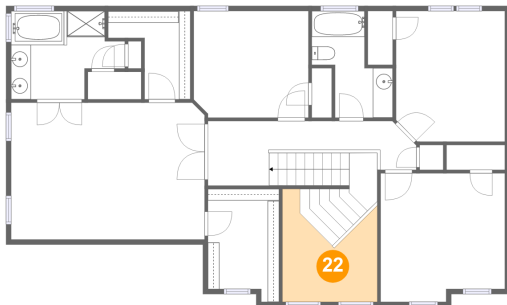
21 Floor 3 - Bedroom



Max Dimensions: 11'6" x 10'8"
Calculated Area: 121 sq. ft
Included: Yes

Heated: Yes
Finished: Yes
Enclosed: Yes
Contiguous: Yes
Permitted: Yes
Wet space: No
Addition: No
Conversion: No

22 Floor 3 - Open To Below



Max Dimensions: 9'6" x 11'3"
Calculated Area: 77 sq. ft
Included: No

Heated: No
Finished: No
Enclosed: No
Contiguous: Yes
Permitted: No
Wet space: No
Addition: No
Conversion: No

23 Floor 3 - Primary Bath

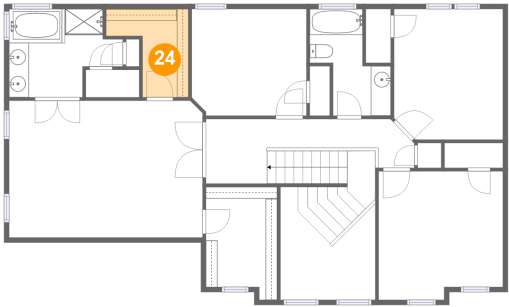


Max Dimensions: 11'4" x 8'10"
Calculated Area: 82 sq. ft
Included: Yes

Heated: Yes
Finished: Yes
Enclosed: Yes
Contiguous: Yes
Permitted: Yes
Wet space: Yes
Addition: No
Conversion: No

10417 Windlass Run Road, Middle River, Baltimore County,
Maryland, United States, 21220

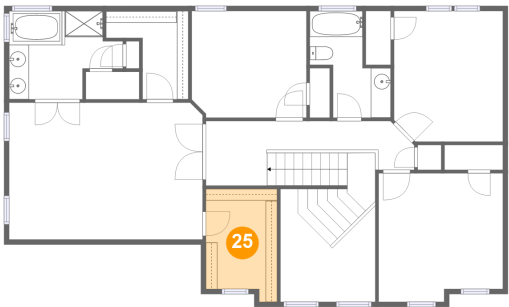
24 Floor 3 - W.I.C.



Max Dimensions: 8'3" x 8'10"
Calculated Area: 50 sq. ft
Included: Yes

Heated: Yes
Finished: Yes
Enclosed: Yes
Contiguous: Yes
Permitted: Yes
Wet space: No
Addition: No
Conversion: No

25 Floor 3 - W.I.C.



Max Dimensions: 7'1" x 11'3"
Calculated Area: 74 sq. ft
Included: Yes

Heated: Yes
Finished: Yes
Enclosed: Yes
Contiguous: Yes
Permitted: Yes
Wet space: No
Addition: No
Conversion: No