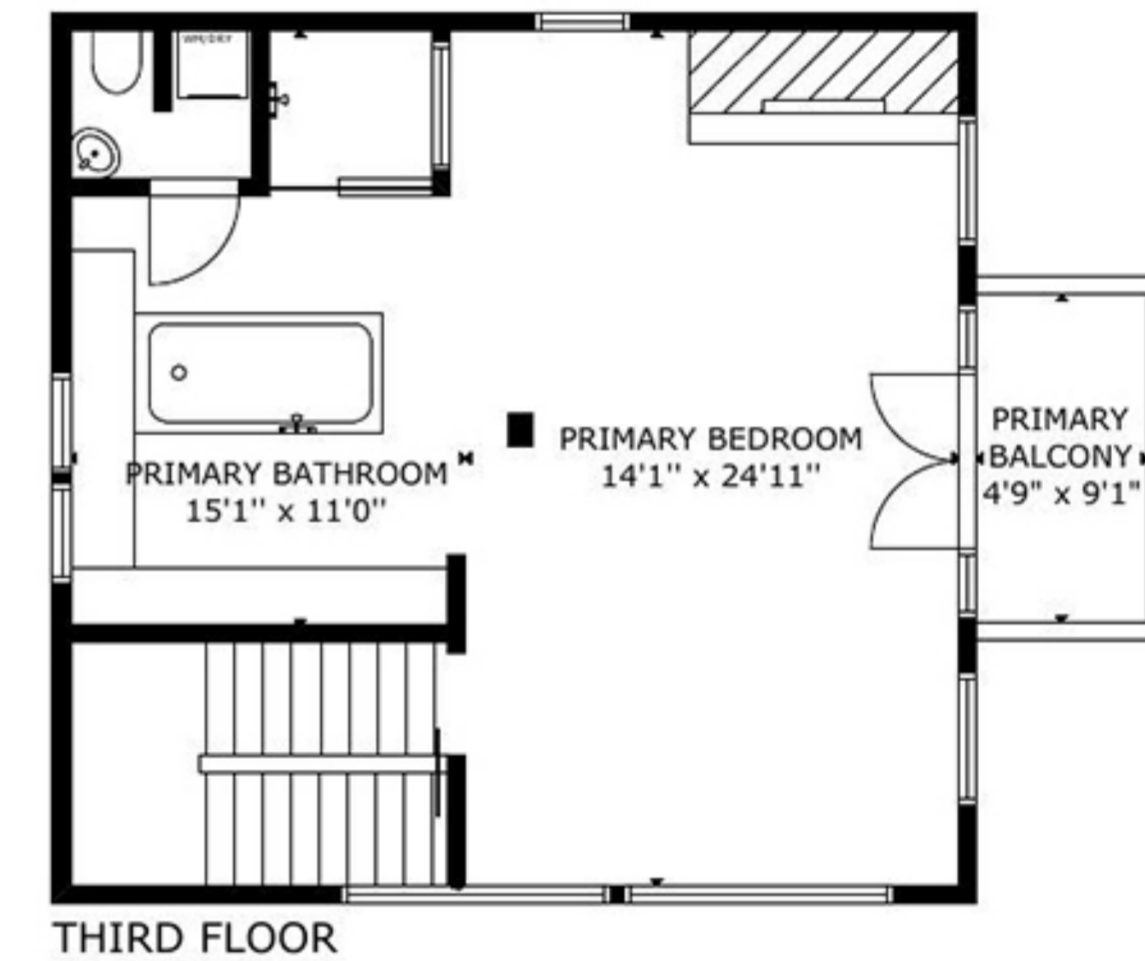
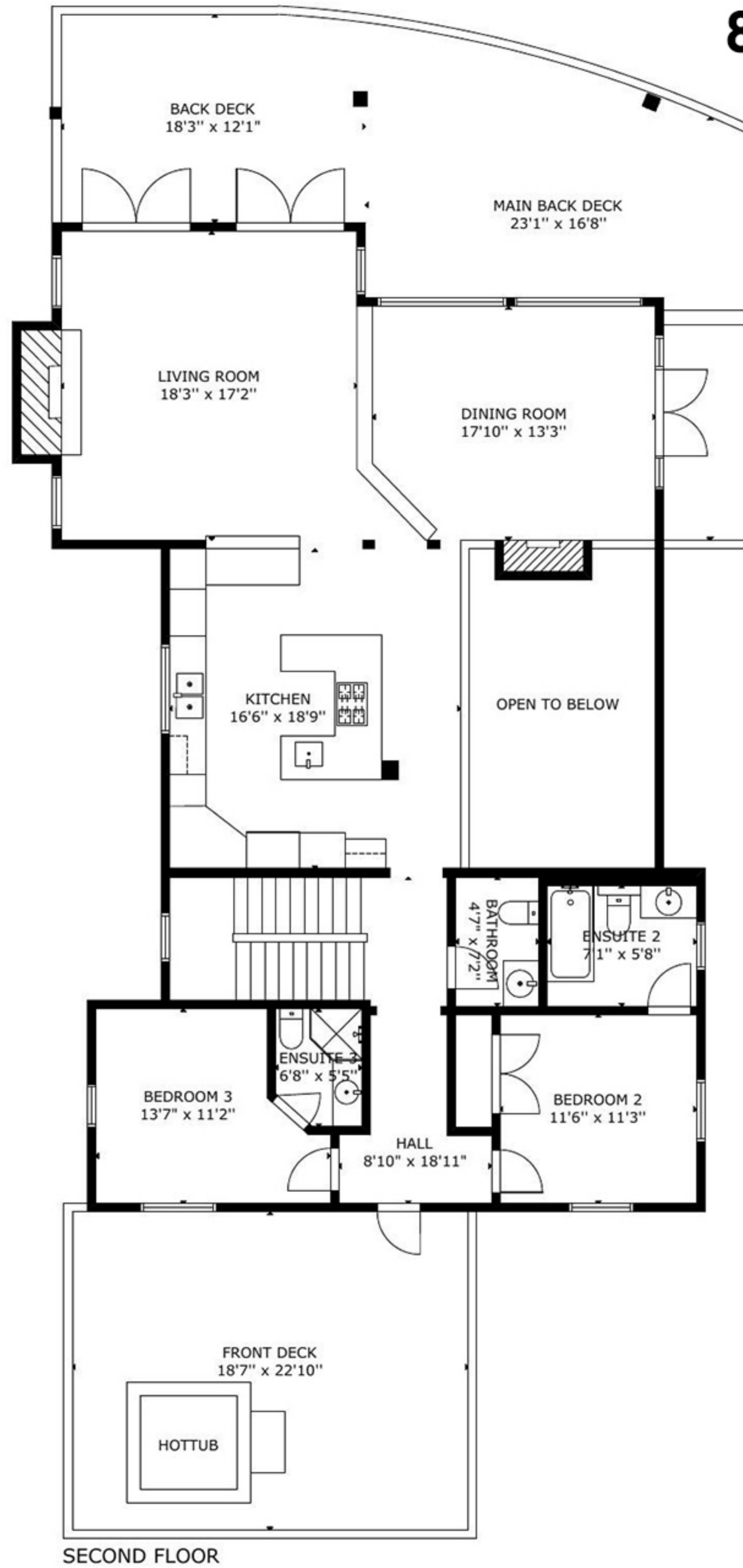
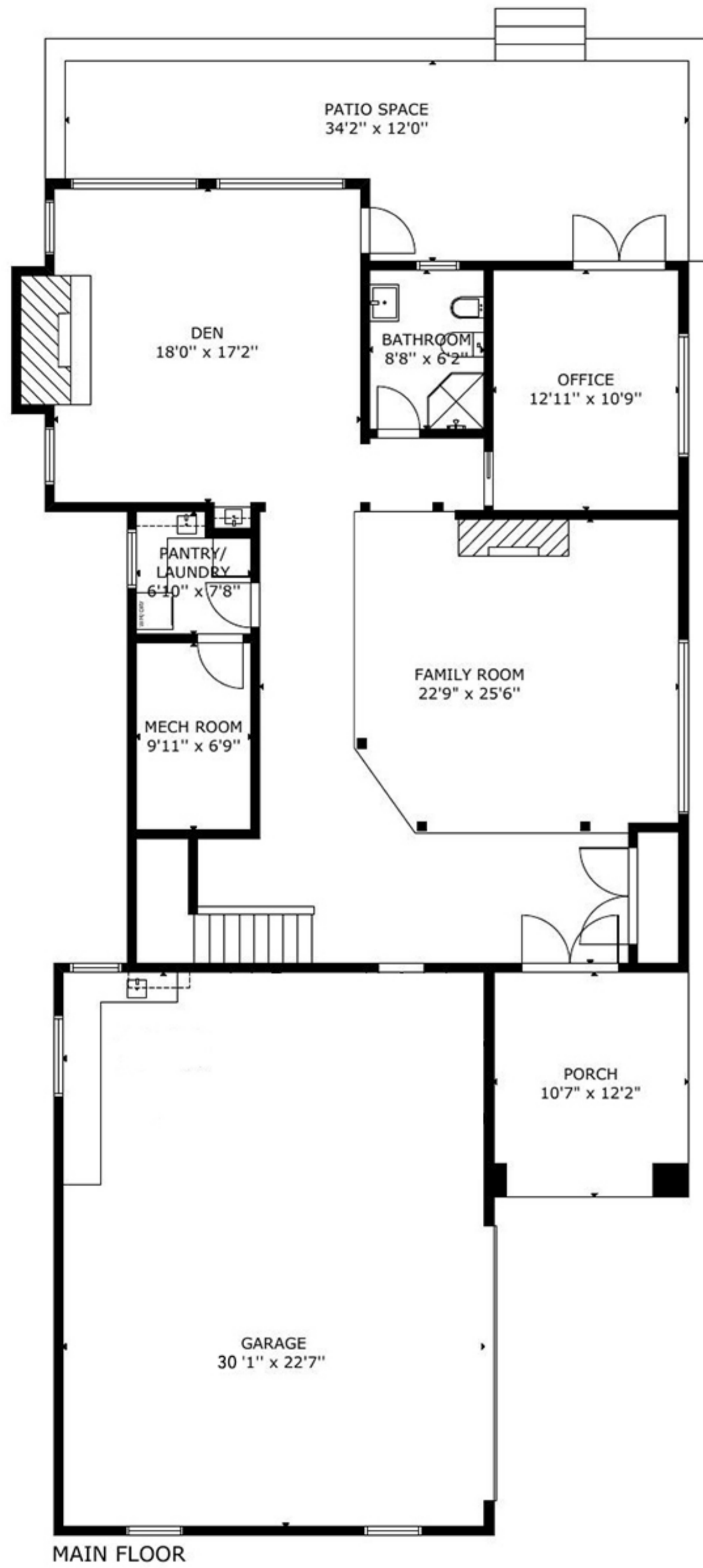


8065 NICKLAUS NORTH BLVD WHISTLER, B.C.

FIRST FLOOR - 1244 SQ FT
SECOND FLOOR - 1577 SQ FT
THIRD FLOOR - 676 SQ FT

TOTAL - 3497 SQ FT



EXCLUDED AREAS

GARAGE - 592 SQ FT
BALCONY - 43 SQ FT
FRONT DECK - 422 SQ FT
BACK DECK - 581 SQ FT
PATIO - 292 SQ FT

These plans are intended to be used for illustrative purposes only. While all reasonable attempts have been made to ensure accuracy and the square footage and room dimensions are believed to be correct, Due to the possibility of human error the information cannot be guaranteed. Scott Brammer Photography makes no representations regarding the legality of the spaces illustrated.

Total area includes 6" of exterior walls