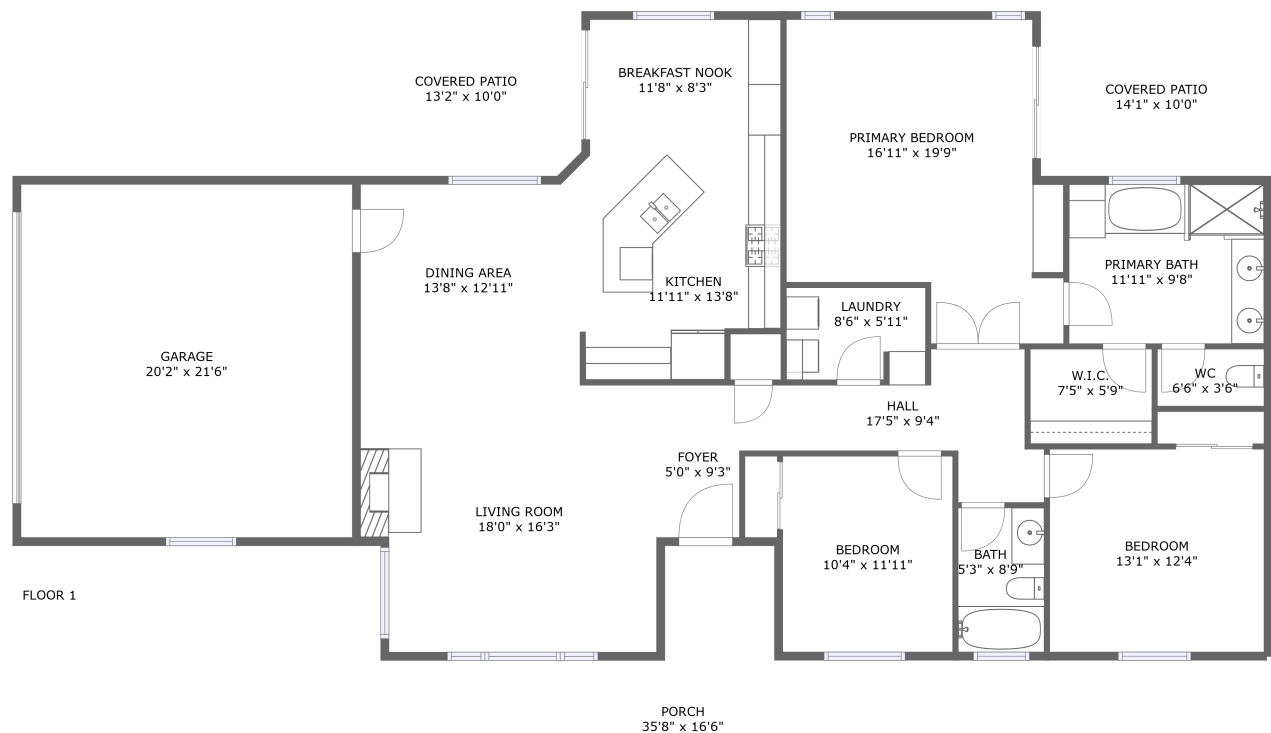




Home report


42852 Badger Circle Drive, Yosemite Lakes, Coarsegold,
Madera County, California, United States, 93614





Property summary


 **1** Garages


 **3** Bedrooms

 **2** Bathrooms

 **0** Half baths

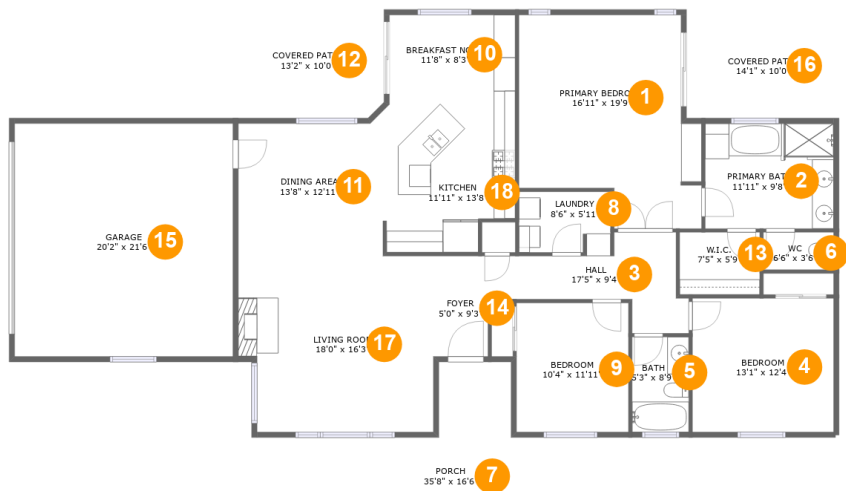
 **1** Floors

 **1,876** Gross living area sqft

 **3,002** Total sqft

Home report

42852 Badger Circle Drive, Yosemite Lakes, Coarsegold,
Madera County, California, United States, 93614



Room dimensions

Floor 1 Total sqft: 3002 Living area: 1876

#		Dimensions	sqft	Counted as living area
1	Primary Bedroom	16'11" x 19'9"	281 sq. ft	Yes
2	Primary Bath	11'11" x 9'8"	115 sq. ft	Yes
3	Hall	17'5" x 9'4"	99 sq. ft	Yes
4	Bedroom	13'1" x 12'4"	161 sq. ft	Yes
5	Bath	5'3" x 8'9"	46 sq. ft	Yes
6	WC	6'6" x 3'6"	23 sq. ft	Yes
7	Porch	35'8" x 16'6"	387 sq. ft	No
8	Laundry	8'6" x 5'11"	48 sq. ft	Yes
9	Bedroom	10'4" x 11'11"	124 sq. ft	Yes
10	Breakfast Nook	11'8" x 8'3"	96 sq. ft	Yes
11	Dining Area	13'8" x 12'11"	168 sq. ft	Yes

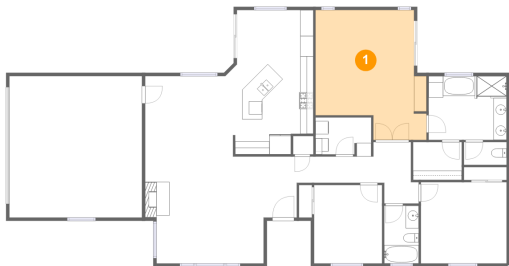
Home report

**42852 Badger Circle Drive, Yosemite Lakes, Coarsegold,
Madera County, California, United States, 93614**

#		Dimensions	sqft	Counted as living area
12	Covered Patio	13'2" x 10'0"	131 sq. ft	No
13	W.I.C.	7'5" x 5'9"	43 sq. ft	Yes
14	Foyer	5'0" x 9'3"	47 sq. ft	Yes
15	Garage	20'2" x 21'6"	434 sq. ft	No
16	Covered Patio	14'1" x 10'0"	142 sq. ft	No
17	Living Room	18'0" x 16'3"	281 sq. ft	Yes
18	Kitchen	11'11" x 13'8"	152 sq. ft	Yes

42852 Badger Circle Drive, Yosemite Lakes, Coarsegold,
Madera County, California, United States, 93614

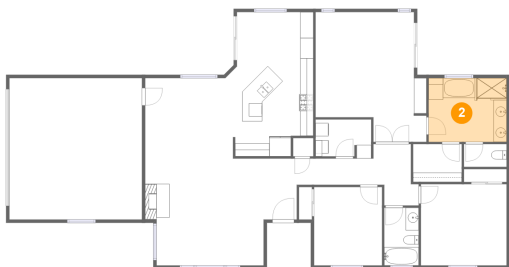
1 Floor 1 - Primary Bedroom



Dimensions: 16'11" x 19'9"
Area: 281 sq. ft
Counted as living area: Yes

Heated: Yes
Finished: Yes
Enclosed: Yes
Contiguous: Yes
Permitted: Yes
Wet space: No
Addition: No
Conversion: No

2 Floor 1 - Primary Bath



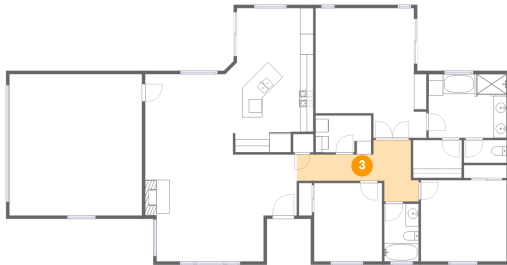
Dimensions: 11'11" x 9'8"
Area: 115 sq. ft
Counted as living area: Yes

Heated: Yes
Finished: Yes
Enclosed: Yes
Contiguous: Yes
Permitted: Yes
Wet space: Yes
Addition: No
Conversion: No

Home report

42852 Badger Circle Drive, Yosemite Lakes, Coarsegold,
Madera County, California, United States, 93614

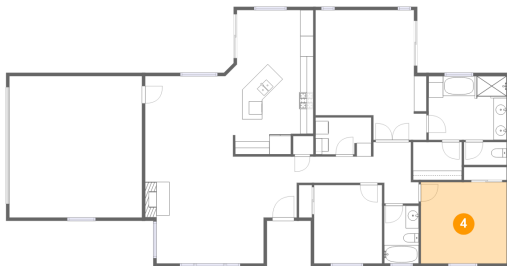
3 Floor 1 - Hall



Dimensions: 17'5" x 9'4"
Area: 99 sq. ft
Counted as living area: Yes

Heated: Yes
Finished: Yes
Enclosed: Yes
Contiguous: Yes
Permitted: Yes
Wet space: No
Addition: No
Conversion: No

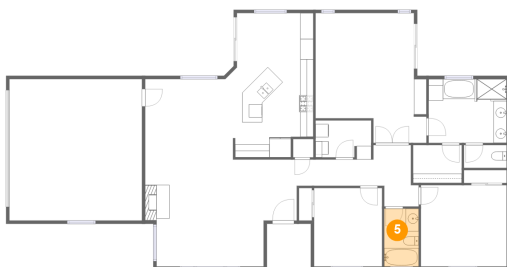
4 Floor 1 - Bedroom



Dimensions: 13'1" x 12'4"
Area: 161 sq. ft
Counted as living area: Yes

Heated: Yes
Finished: Yes
Enclosed: Yes
Contiguous: Yes
Permitted: Yes
Wet space: No
Addition: No
Conversion: No

5 Floor 1 - Bath



Dimensions: 5'3" x 8'9"
Area: 46 sq. ft
Counted as living area: Yes

Heated: Yes
Finished: Yes
Enclosed: Yes
Contiguous: Yes
Permitted: Yes
Wet space: Yes
Addition: No
Conversion: No

Home report

42852 Badger Circle Drive, Yosemite Lakes, Coarsegold,
Madera County, California, United States, 93614

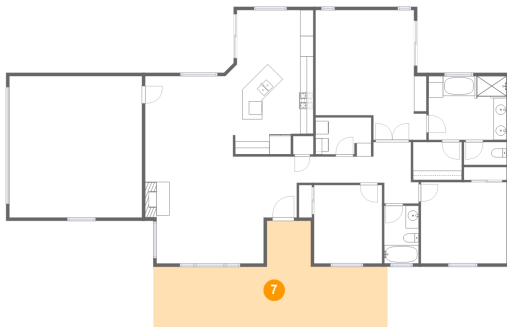
6 Floor 1 - WC



Dimensions: 6'6" x 3'6"
Area: 23 sq. ft
Counted as living area: Yes

Heated: Yes
Finished: Yes
Enclosed: Yes
Contiguous: Yes
Permitted: Yes
Wet space: Yes
Addition: No
Conversion: No

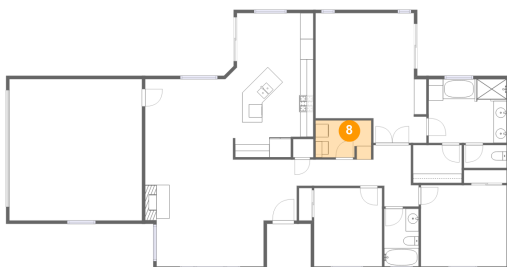
7 Floor 1 - Porch



Dimensions: 35'8" x 16'6"
Area: 387 sq. ft
Counted as living area: No

Heated: No
Finished: Yes
Enclosed: No
Contiguous: Yes
Permitted: Yes
Wet space: No
Addition: No
Conversion: No

8 Floor 1 - Laundry



Dimensions: 8'6" x 5'11"
Area: 48 sq. ft
Counted as living area: Yes

Heated: Yes
Finished: Yes
Enclosed: Yes
Contiguous: Yes
Permitted: Yes
Wet space: No
Addition: No
Conversion: No

Home report

42852 Badger Circle Drive, Yosemite Lakes, Coarsegold,
Madera County, California, United States, 93614

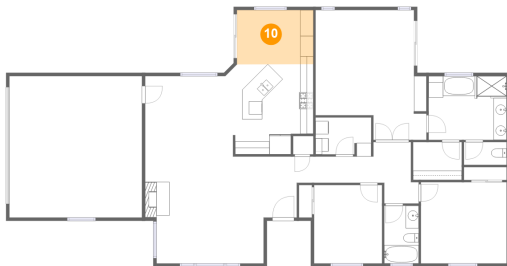
9 Floor 1 - Bedroom



Dimensions: 10'4" x 11'11"
Area: 124 sq. ft
Counted as living area: Yes

Heated: Yes
Finished: Yes
Enclosed: Yes
Contiguous: Yes
Permitted: Yes
Wet space: No
Addition: No
Conversion: No

10 Floor 1 - Breakfast Nook



Dimensions: 11'8" x 8'3"
Area: 96 sq. ft
Counted as living area: Yes

Heated: Yes
Finished: Yes
Enclosed: Yes
Contiguous: Yes
Permitted: Yes
Wet space: No
Addition: No
Conversion: No

11 Floor 1 - Dining Area



Dimensions: 13'8" x 12'11"
Area: 168 sq. ft
Counted as living area: Yes

Heated: Yes
Finished: Yes
Enclosed: Yes
Contiguous: Yes
Permitted: Yes
Wet space: No
Addition: No
Conversion: No

Home report

42852 Badger Circle Drive, Yosemite Lakes, Coarsegold,
Madera County, California, United States, 93614

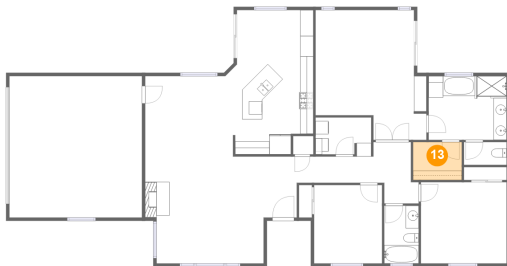
12 Floor 1 - Covered Patio



Dimensions: 13'2" x 10'0"
Area: 131 sq. ft
Counted as living area: No

Heated: No
Finished: Yes
Enclosed: No
Contiguous: Yes
Permitted: Yes
Wet space: No
Addition: No
Conversion: No

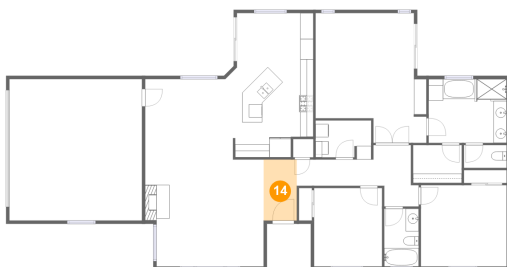
13 Floor 1 - W.I.C.



Dimensions: 7'5" x 5'9"
Area: 43 sq. ft
Counted as living area: Yes

Heated: Yes
Finished: Yes
Enclosed: Yes
Contiguous: Yes
Permitted: Yes
Wet space: No
Addition: No
Conversion: No

14 Floor 1 - Foyer



Dimensions: 5'0" x 9'3"
Area: 47 sq. ft
Counted as living area: Yes

Heated: Yes
Finished: Yes
Enclosed: Yes
Contiguous: Yes
Permitted: Yes
Wet space: No
Addition: No
Conversion: No

Home report

42852 Badger Circle Drive, Yosemite Lakes, Coarsegold,
Madera County, California, United States, 93614

15 Floor 1 - Garage



Dimensions: 20'2" x 21'6"
Area: 434 sq. ft
Counted as living area: No

Heated: No
Finished: No
Enclosed: Yes
Contiguous: Yes
Permitted: Yes
Wet space: No
Addition: No
Conversion: No

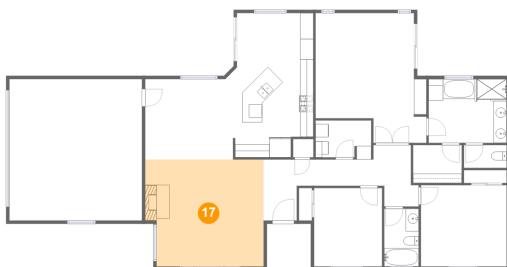
16 Floor 1 - Covered Patio



Dimensions: 14'1" x 10'0"
Area: 142 sq. ft
Counted as living area: No

Heated: No
Finished: Yes
Enclosed: No
Contiguous: Yes
Permitted: Yes
Wet space: No
Addition: No
Conversion: No

17 Floor 1 - Living Room

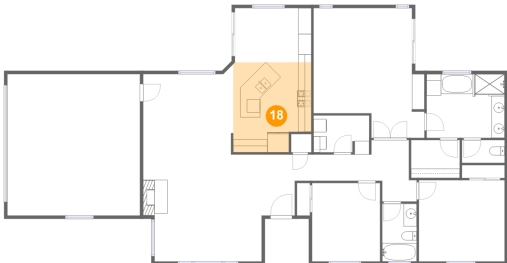


Dimensions: 18'0" x 16'3"
Area: 281 sq. ft
Counted as living area: Yes

Heated: Yes
Finished: Yes
Enclosed: Yes
Contiguous: Yes
Permitted: Yes
Wet space: No
Addition: No
Conversion: No

42852 Badger Circle Drive, Yosemite Lakes, Coarsegold,
Madera County, California, United States, 93614

18 Floor 1 - Kitchen



Dimensions: 11'11" x 13'8"
Area: 152 sq. ft
Counted as living area: Yes

Heated: Yes
Finished: Yes
Enclosed: Yes
Contiguous: Yes
Permitted: Yes
Wet space: No
Addition: No
Conversion: No