



Home report


4232 Burke Avenue North, Wallingford, Seattle, King County, Washington, United States, 98103





Property summary


 **1** Garages


 **4** Bedrooms

 **3** Bathrooms

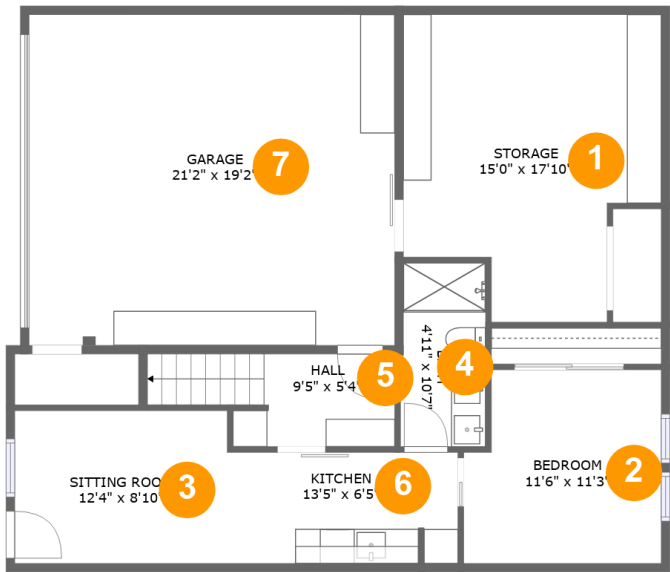
 **1** Half baths

 **4** Floors

 **3,827** Gross living area sqft

 **4,703** Total sqft

4232 Burke Avenue North, Wallingford, Seattle, King County,
Washington, United States, 98103



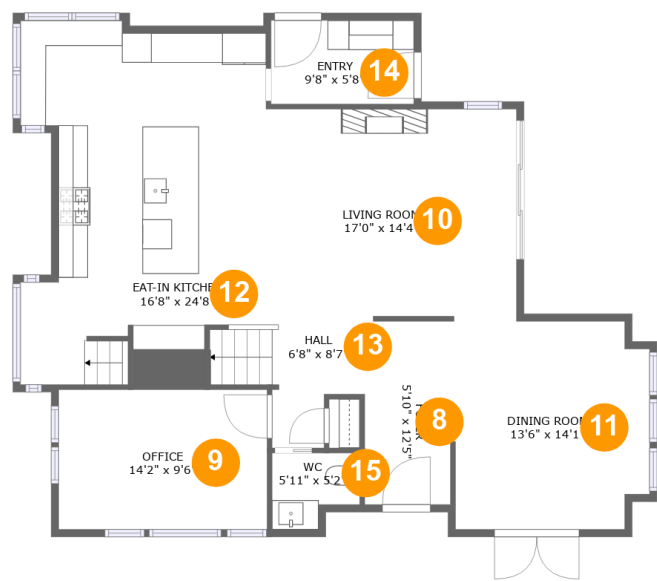
Room dimensions

Floor 1Total sqft: 1249 Living area: 549

#		Max Dimensions	sqft	Included
1	Storage	15'0" x 17'10"	226 sq. ft	No
2	Bedroom	11'6" x 11'3"	121 sq. ft	Yes
3	Sitting Room	12'4" x 8'10"	109 sq. ft	Yes
4	Bath	4'11" x 10'7"	52 sq. ft	Yes
5	Hall	9'5" x 5'4"	64 sq. ft	Yes
6	Kitchen	13'5" x 6'5"	86 sq. ft	Yes
7	Garage	21'2" x 19'2"	407 sq. ft	No

Home report

4232 Burke Avenue North, Wallingford, Seattle, King County, Washington, United States, 98103



Room dimensions

Floor 2 Total sqft: 1244 Living area: 1244

#		Max Dimensions	sqft	Included
8	Foyer	5'10" x 12'5"	72 sq. ft	Yes
9	Office	14'2" x 9'6"	134 sq. ft	Yes
10	Living Room	17'0" x 14'4"	242 sq. ft	Yes
11	Dining Room	13'6" x 14'1"	181 sq. ft	Yes
12	Eat-in Kitchen	16'8" x 24'8"	356 sq. ft	Yes
13	Hall	6'8" x 8'7"	60 sq. ft	Yes
14	Entry	9'8" x 5'8"	55 sq. ft	Yes
15	WC	5'11" x 5'2"	26 sq. ft	Yes

**4232 Burke Avenue North, Wallingford, Seattle, King County,
Washington, United States, 98103**



Total sqft: 1395 Living area: 1395

Scan captured on Thu, 22 May 2025 16:52:19 GMT

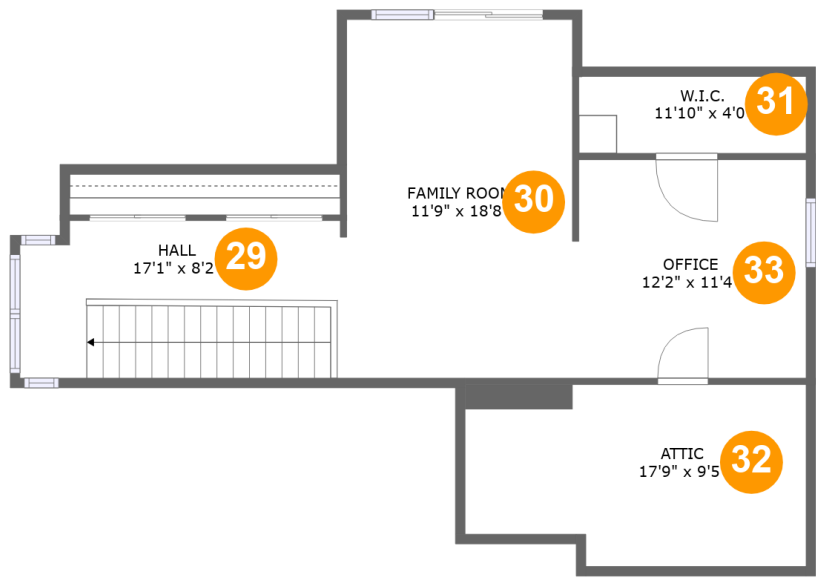
Home report

4232 Burke Avenue North, Wallingford, Seattle, King County,
Washington, United States, 98103

#		Max Dimensions	sqft	Included
27	W.I.C.	8'10" x 6'4"	56 sq. ft	Yes
28	W.I.C.	8'4" x 6'3"	52 sq. ft	Yes

Home report

4232 Burke Avenue North, Wallingford, Seattle, King County, Washington, United States, 98103



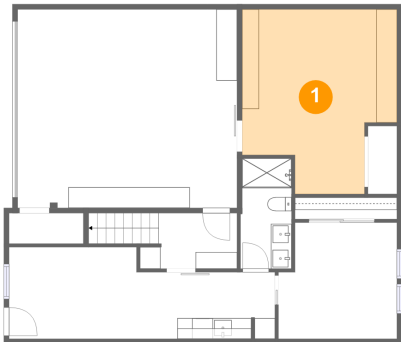
Room dimensions

Floor 4 Total sqft: 815 Living area: 639

#		Max Dimensions	sqft	Included
29	Hall	17'1" x 8'2"	137 sq. ft	Yes
30	Family Room	11'9" x 18'8"	219 sq. ft	Yes
31	W.I.C.	11'10" x 4'0"	47 sq. ft	Yes
32	Attic	17'9" x 9'5"	89 sq. ft	No
33	Office	12'2" x 11'4"	137 sq. ft	Yes

4232 Burke Avenue North, Wallingford, Seattle, King County,
Washington, United States, 98103

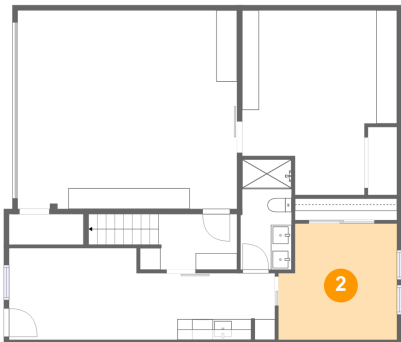
1 Floor 1 - Storage



Max Dimensions: 15'0" x 17'10"
Calculated Area: 226 sq. ft
Included: No

Heated: No
Finished: No
Enclosed: No
Contiguous: Yes
Permitted: Yes
Wet space: No
Addition: No
Conversion: No

2 Floor 1 - Bedroom

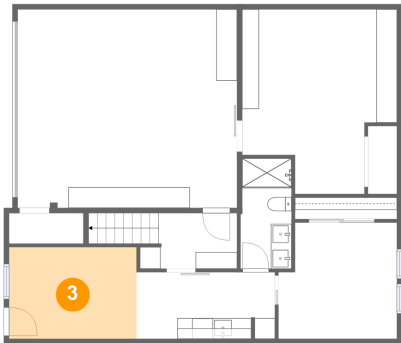


Max Dimensions: 11'6" x 11'3"
Calculated Area: 121 sq. ft
Included: Yes

Heated: Yes
Finished: Yes
Enclosed: Yes
Contiguous: Yes
Permitted: Yes
Wet space: No
Addition: No
Conversion: No

4232 Burke Avenue North, Wallingford, Seattle, King County,
Washington, United States, 98103

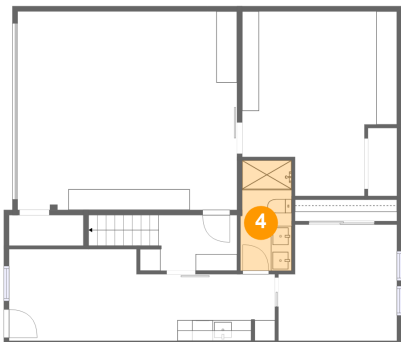
3 Floor 1 - Sitting Room



Max Dimensions: 12'4" x 8'10"
Calculated Area: 109 sq. ft
Included: Yes

Heated: Yes
Finished: Yes
Enclosed: Yes
Contiguous: Yes
Permitted: Yes
Wet space: No
Addition: No
Conversion: No

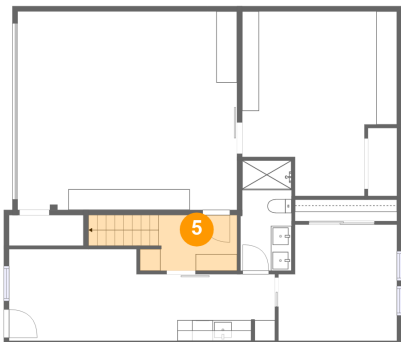
4 Floor 1 - Bath



Max Dimensions: 4'11" x 10'7"
Calculated Area: 52 sq. ft
Included: Yes

Heated: Yes
Finished: Yes
Enclosed: Yes
Contiguous: Yes
Permitted: Yes
Wet space: Yes
Addition: No
Conversion: No

5 Floor 1 - Hall

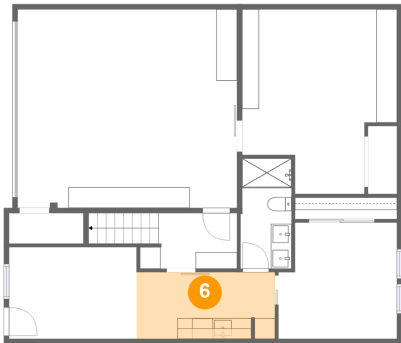


Max Dimensions: 9'5" x 5'4"
Calculated Area: 64 sq. ft
Included: Yes

Heated: Yes
Finished: Yes
Enclosed: Yes
Contiguous: Yes
Permitted: Yes
Wet space: No
Addition: No
Conversion: No

4232 Burke Avenue North, Wallingford, Seattle, King County,
Washington, United States, 98103

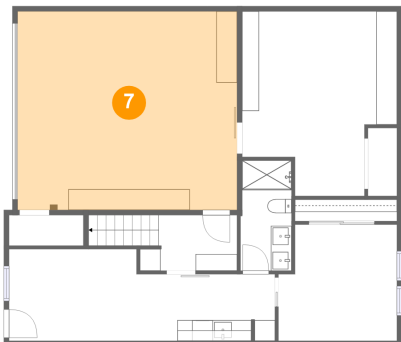
6 Floor 1 - Kitchen



Max Dimensions: 13'5" x 6'5"
Calculated Area: 86 sq. ft
Included: Yes

Heated: Yes
Finished: Yes
Enclosed: Yes
Contiguous: Yes
Permitted: Yes
Wet space: No
Addition: No
Conversion: No

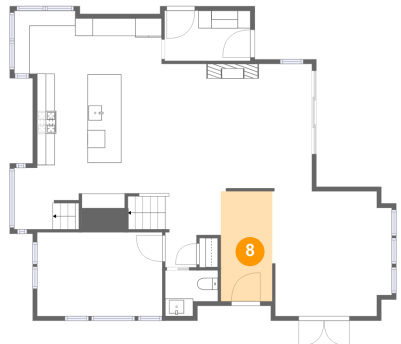
7 Floor 1 - Garage



Max Dimensions: 21'2" x 19'2"
Calculated Area: 407 sq. ft
Included: No

Heated: No
Finished: No
Enclosed: Yes
Contiguous: Yes
Permitted: Yes
Wet space: No
Addition: No
Conversion: No

8 Floor 2 - Foyer



Max Dimensions: 5'10" x 12'5"
Calculated Area: 72 sq. ft
Included: Yes

Heated: Yes
Finished: Yes
Enclosed: Yes
Contiguous: Yes
Permitted: Yes
Wet space: No
Addition: No
Conversion: No

4232 Burke Avenue North, Wallingford, Seattle, King County,
Washington, United States, 98103

9 Floor 2 - Office



Max Dimensions: 14'2" x 9'6"
Calculated Area: 134 sq. ft
Included: Yes

Heated: Yes
Finished: Yes
Enclosed: Yes
Contiguous: Yes
Permitted: Yes
Wet space: No
Addition: No
Conversion: No

10 Floor 2 - Living Room



Max Dimensions: 17'0" x 14'4"
Calculated Area: 242 sq. ft
Included: Yes

Heated: Yes
Finished: Yes
Enclosed: Yes
Contiguous: Yes
Permitted: Yes
Wet space: No
Addition: No
Conversion: No

11 Floor 2 - Dining Room

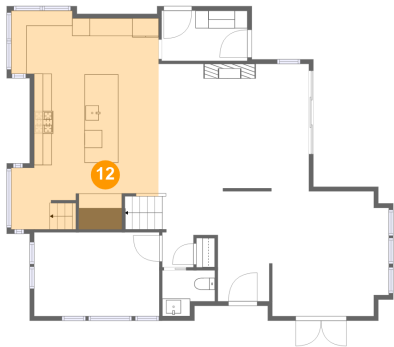


Max Dimensions: 13'6" x 14'1"
Calculated Area: 181 sq. ft
Included: Yes

Heated: Yes
Finished: Yes
Enclosed: Yes
Contiguous: Yes
Permitted: Yes
Wet space: No
Addition: No
Conversion: No

4232 Burke Avenue North, Wallingford, Seattle, King County,
Washington, United States, 98103

12 Floor 2 - Eat-in Kitchen



Max Dimensions: 16'8" x 24'8"
Calculated Area: 356 sq. ft
Included: Yes

Heated: Yes
Finished: Yes
Enclosed: Yes
Contiguous: Yes
Permitted: Yes
Wet space: No
Addition: No
Conversion: No

13 Floor 2 - Hall



Max Dimensions: 6'8" x 8'7"
Calculated Area: 60 sq. ft
Included: Yes

Heated: Yes
Finished: Yes
Enclosed: Yes
Contiguous: Yes
Permitted: Yes
Wet space: No
Addition: No
Conversion: No

14 Floor 2 - Entry



Max Dimensions: 9'8" x 5'8"
Calculated Area: 55 sq. ft
Included: Yes

Heated: Yes
Finished: Yes
Enclosed: Yes
Contiguous: Yes
Permitted: Yes
Wet space: No
Addition: No
Conversion: No

4232 Burke Avenue North, Wallingford, Seattle, King County,
Washington, United States, 98103

15 Floor 2 - WC



Max Dimensions: 5'11" x 5'2"
Calculated Area: 26 sq. ft
Included: Yes

Heated: Yes
Finished: Yes
Enclosed: Yes
Contiguous: Yes
Permitted: Yes
Wet space: Yes
Addition: No
Conversion: No

16 Floor 3 - Hall



Max Dimensions: 8'9" x 3'1"
Calculated Area: 28 sq. ft
Included: Yes

Heated: Yes
Finished: Yes
Enclosed: Yes
Contiguous: Yes
Permitted: Yes
Wet space: No
Addition: No
Conversion: No

17 Floor 3 - Primary Bath



Max Dimensions: 11'9" x 15'6"
Calculated Area: 161 sq. ft
Included: Yes

Heated: Yes
Finished: Yes
Enclosed: Yes
Contiguous: Yes
Permitted: Yes
Wet space: Yes
Addition: No
Conversion: No

4232 Burke Avenue North, Wallingford, Seattle, King County,
Washington, United States, 98103

18 Floor 3 - Laundry



Max Dimensions: 7'10" x 11'6"
Calculated Area: 82 sq. ft
Included: Yes

Heated: Yes
Finished: Yes
Enclosed: Yes
Contiguous: Yes
Permitted: Yes
Wet space: No
Addition: No
Conversion: No

19 Floor 3 - Bath



Max Dimensions: 5'1" x 4'11"
Calculated Area: 25 sq. ft
Included: Yes

Heated: Yes
Finished: Yes
Enclosed: Yes
Contiguous: Yes
Permitted: Yes
Wet space: Yes
Addition: No
Conversion: No

20 Floor 3 - Bath



Max Dimensions: 6'0" x 4'11"
Calculated Area: 29 sq. ft
Included: Yes

Heated: Yes
Finished: Yes
Enclosed: Yes
Contiguous: Yes
Permitted: Yes
Wet space: Yes
Addition: No
Conversion: No

4232 Burke Avenue North, Wallingford, Seattle, King County,
Washington, United States, 98103

21 Floor 3 - Bedroom



Max Dimensions: 17'7" x 9'6"
Calculated Area: 144 sq. ft
Included: Yes

Heated: Yes
Finished: Yes
Enclosed: Yes
Contiguous: Yes
Permitted: Yes
Wet space: No
Addition: No
Conversion: No

22 Floor 3 - Bedroom



Max Dimensions: 12'3" x 12'7"
Calculated Area: 135 sq. ft
Included: Yes

Heated: Yes
Finished: Yes
Enclosed: Yes
Contiguous: Yes
Permitted: Yes
Wet space: No
Addition: No
Conversion: No

23 Floor 3 - WC



Max Dimensions: 2'11" x 5'5"
Calculated Area: 16 sq. ft
Included: Yes

Heated: Yes
Finished: Yes
Enclosed: Yes
Contiguous: Yes
Permitted: Yes
Wet space: Yes
Addition: No
Conversion: No

4232 Burke Avenue North, Wallingford, Seattle, King County,
Washington, United States, 98103

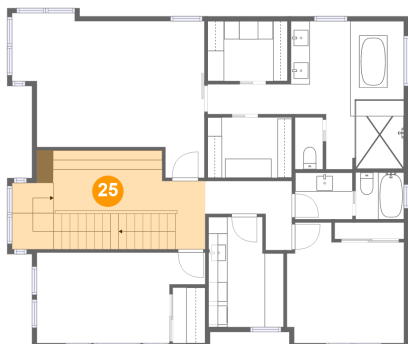
24 Floor 3 - Primary Bedroom



Max Dimensions: 20'1" x 16'4"
Calculated Area: 265 sq. ft
Included: Yes

Heated: Yes
Finished: Yes
Enclosed: Yes
Contiguous: Yes
Permitted: Yes
Wet space: No
Addition: No
Conversion: No

25 Floor 3 - Hall



Max Dimensions: 15'11" x 7'2"
Calculated Area: 185 sq. ft
Included: Yes

Heated: Yes
Finished: Yes
Enclosed: Yes
Contiguous: Yes
Permitted: Yes
Wet space: No
Addition: No
Conversion: No

26 Floor 3 - Hall



Max Dimensions: 9'1" x 7'2"
Calculated Area: 41 sq. ft
Included: Yes

Heated: Yes
Finished: Yes
Enclosed: Yes
Contiguous: Yes
Permitted: Yes
Wet space: No
Addition: No
Conversion: No

4232 Burke Avenue North, Wallingford, Seattle, King County,
Washington, United States, 98103

27 Floor 3 - W.I.C.



Max Dimensions: 8'10" x 6'4"
Calculated Area: 56 sq. ft
Included: Yes

Heated: Yes
Finished: Yes
Enclosed: Yes
Contiguous: Yes
Permitted: Yes
Wet space: No
Addition: No
Conversion: No

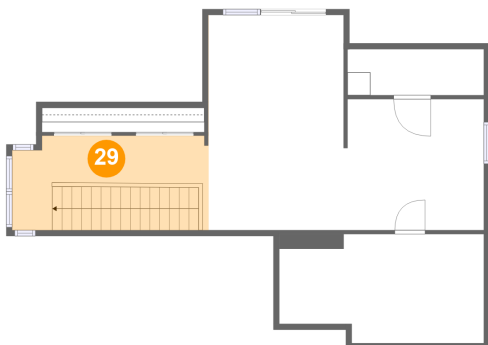
28 Floor 3 - W.I.C.



Max Dimensions: 8'4" x 6'3"
Calculated Area: 52 sq. ft
Included: Yes

Heated: Yes
Finished: Yes
Enclosed: Yes
Contiguous: Yes
Permitted: Yes
Wet space: No
Addition: No
Conversion: No

29 Floor 4 - Hall

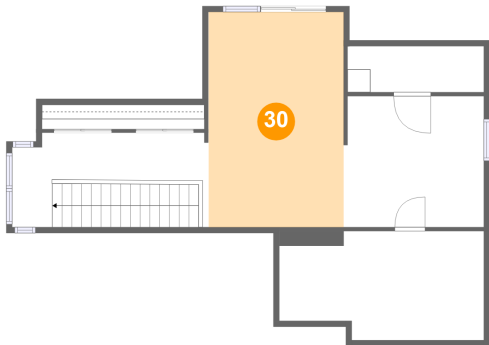


Max Dimensions: 17'1" x 8'2"
Calculated Area: 137 sq. ft
Included: Yes

Heated: Yes
Finished: Yes
Enclosed: Yes
Contiguous: Yes
Permitted: Yes
Wet space: No
Addition: No
Conversion: No

4232 Burke Avenue North, Wallingford, Seattle, King County,
Washington, United States, 98103

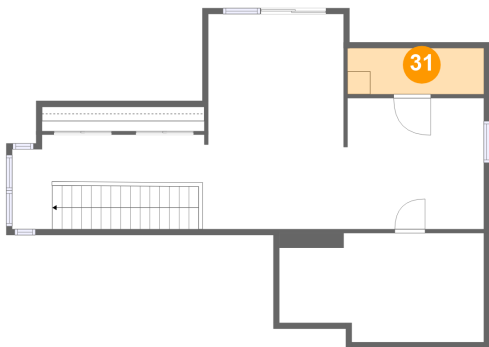
30 Floor 4 - Family Room



Max Dimensions: 11'9" x 18'8"
Calculated Area: 219 sq. ft
Included: Yes

Heated: Yes
Finished: Yes
Enclosed: Yes
Contiguous: Yes
Permitted: Yes
Wet space: No
Addition: No
Conversion: No

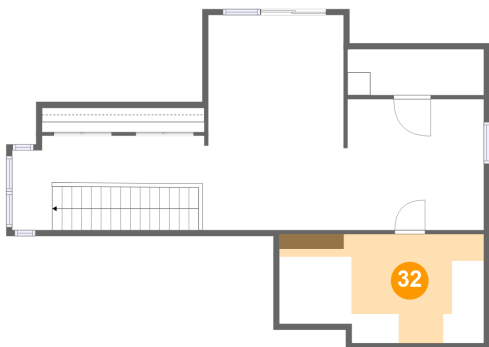
31 Floor 4 - W.I.C.



Max Dimensions: 11'10" x 4'0"
Calculated Area: 47 sq. ft
Included: Yes

Heated: Yes
Finished: Yes
Enclosed: Yes
Contiguous: Yes
Permitted: Yes
Wet space: No
Addition: No
Conversion: No

32 Floor 4 - Attic



Max Dimensions: 17'9" x 9'5"
Calculated Area: 89 sq. ft
Included: No

Heated: No
Finished: No
Enclosed: Yes
Contiguous: Yes
Permitted: Yes
Wet space: No
Addition: No
Conversion: No

4232 Burke Avenue North, Wallingford, Seattle, King County,
Washington, United States, 98103

33 Floor 4 - Office



Max Dimensions: 12'2" x 11'4"
Calculated Area: 137 sq. ft
Included: Yes

Heated: Yes
Finished: Yes
Enclosed: Yes
Contiguous: Yes
Permitted: Yes
Wet space: No
Addition: No
Conversion: No