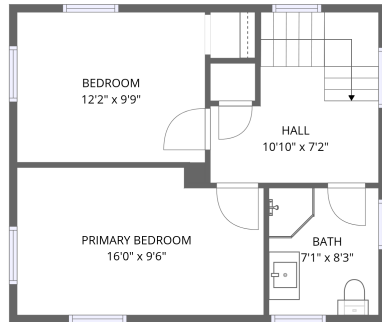
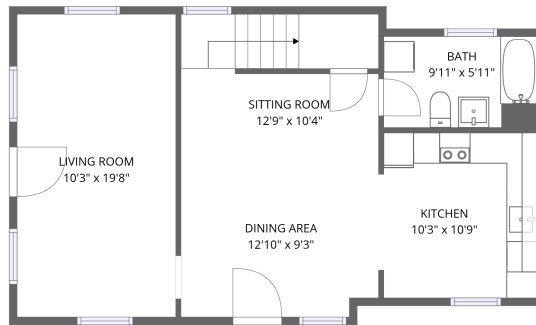


Home data report

406 Chase Ave, Gambier, OH, US



2nd floor



1st floor

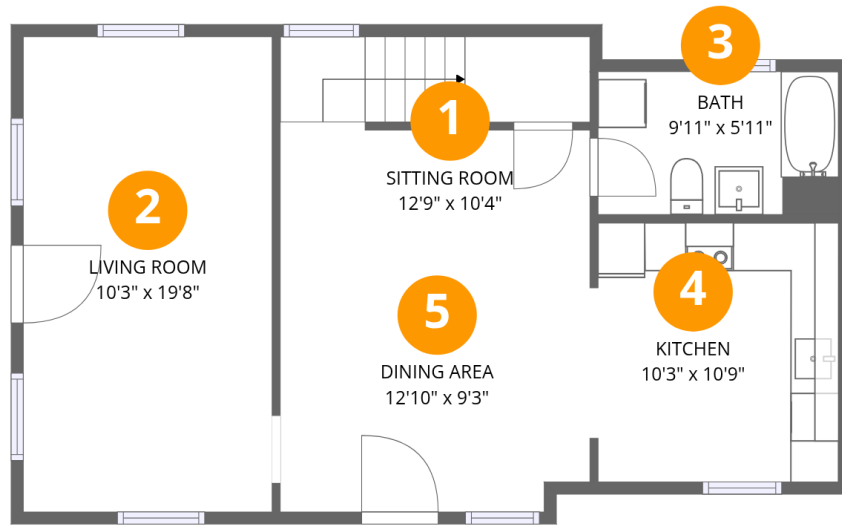
Total Area: 1093 sq. ft

1st Floor: 633 sq. ft, 2nd Floor: 460 sq. ft

Excluded: Walls: 97 sq. ft

Property summary





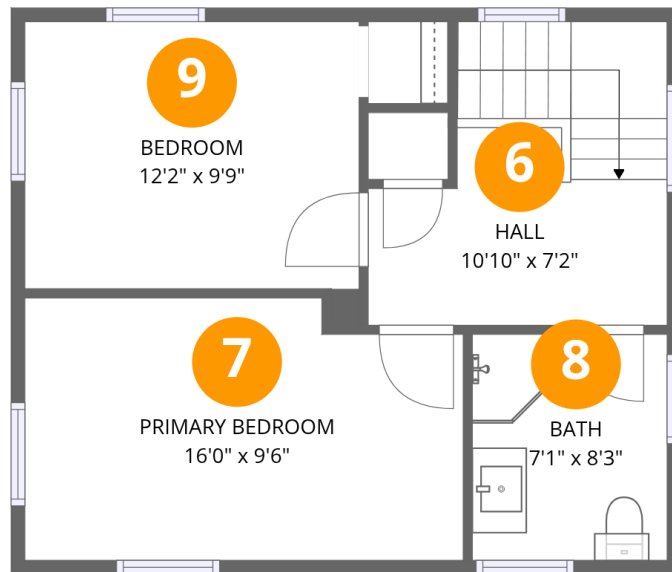
Room dimensions

Floor 1

Total: 633 sqft

Excluded: 0 sqft

#		Dimensions	sqft	Counted as living area
1	Sitting Room	12'9" x 10'4"	130 sq. ft	Yes
2	Living Room	10'3" x 19'8"	202 sq. ft	Yes
3	Bath	9'11" x 5'11"	59 sq. ft	Yes
4	Kitchen	10'3" x 10'9"	109 sq. ft	Yes
5	Dining Area	12'10" x 9'3"	116 sq. ft	Yes



Room dimensions

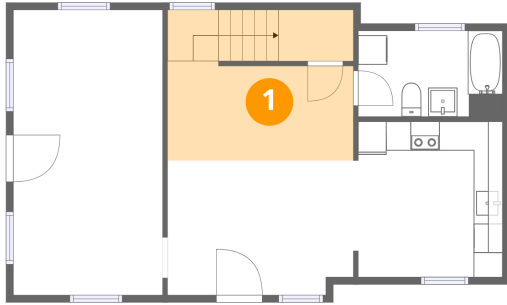
Floor 2

Total:460sqft

Excluded: 0sqft

#		Dimensions	sqft	Counted as living area
6	Hall	10'10" x 7'2"	101 sq. ft	Yes
7	Primary Bedroom	16'0" x 9'6"	146 sq. ft	Yes
8	Bath	7'1" x 8'3"	59 sq. ft	Yes
9	Bedroom	12'2" x 9'9"	120 sq. ft	Yes

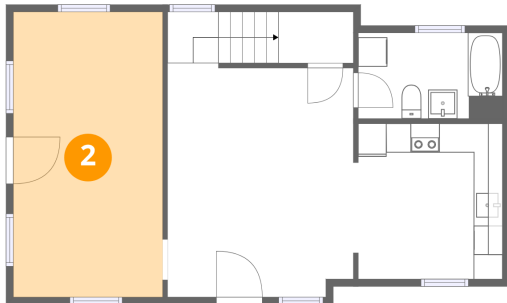
1 Floor 1 - Sitting Room



Dimensions: 12'9" x 10'4"
Area: 130 sq. ft
Counted as living area: Yes

Heated: Yes
Finished: Yes
Enclosed: Yes
Contiguous: Yes
Permitted: Yes
Wet space: No
Addition: No
Conversion: No

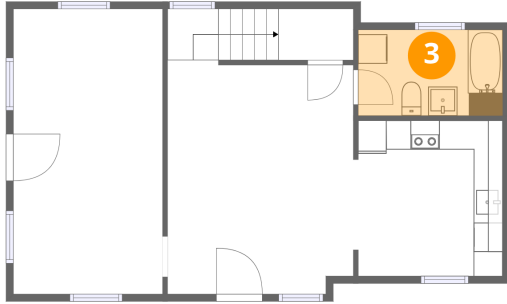
2 Floor 1 - Living Room



Dimensions: 10'3" x 19'8"
Area: 202 sq. ft
Counted as living area: Yes

Heated: Yes
Finished: Yes
Enclosed: Yes
Contiguous: Yes
Permitted: Yes
Wet space: No
Addition: No
Conversion: No

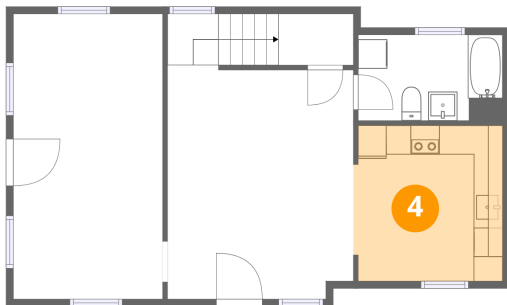
3 Floor 1 - Bath



Dimensions: 9'11" x 5'11"
Area: 59 sq. ft
Counted as living area: Yes

Heated: Yes
Finished: Yes
Enclosed: Yes
Contiguous: Yes
Permitted: Yes
Wet space: Yes
Addition: No
Conversion: No

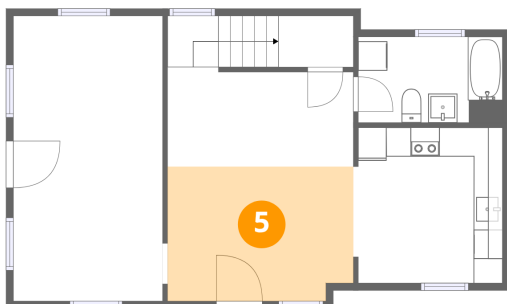
4 Floor 1 - Kitchen



Dimensions: 10'3" x 10'9"
Area: 109 sq. ft
Counted as living area: Yes

Heated: Yes
Finished: Yes
Enclosed: Yes
Contiguous: Yes
Permitted: Yes
Wet space: No
Addition: No
Conversion: No

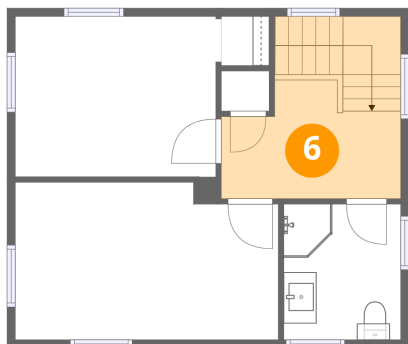
5 Floor 1 - Dining Area



Dimensions: 12'10" x 9'3"
Area: 116 sq. ft
Counted as living area: Yes

Heated: Yes
Finished: Yes
Enclosed: Yes
Contiguous: Yes
Permitted: Yes
Wet space: No
Addition: No
Conversion: No

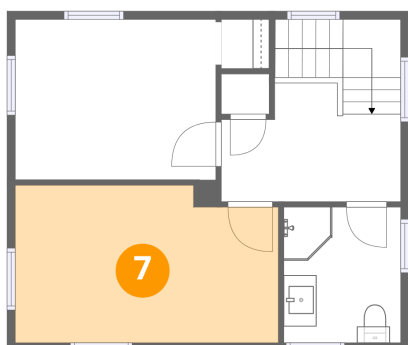
6 Floor 2 - Hall



Dimensions: 10'10" x 7'2"
Area: 101 sq. ft
Counted as living area: Yes

Heated: Yes
Finished: Yes
Enclosed: Yes
Contiguous: Yes
Permitted: Yes
Wet space: No
Addition: No
Conversion: No

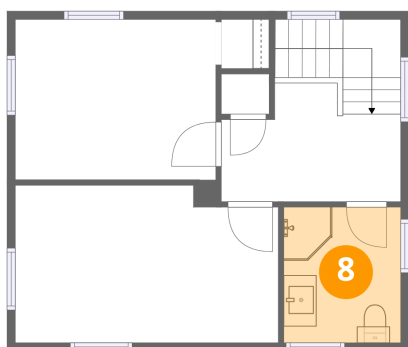
7 Floor 2 - Primary Bedroom



Dimensions: 16'0" x 9'6"
Area: 146 sq. ft
Counted as living area: Yes

Heated: Yes
Finished: Yes
Enclosed: Yes
Contiguous: Yes
Permitted: Yes
Wet space: No
Addition: No
Conversion: No

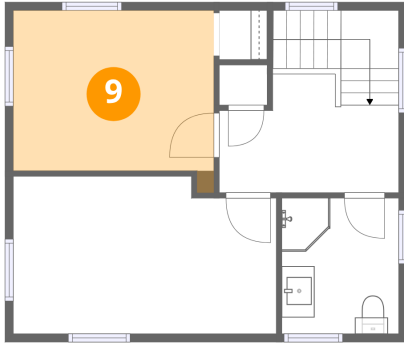
8 Floor 2 - Bath



Dimensions: 7'1" x 8'3"
Area: 59 sq. ft
Counted as living area: Yes

Heated: Yes
Finished: Yes
Enclosed: Yes
Contiguous: Yes
Permitted: Yes
Wet space: Yes
Addition: No
Conversion: No

9 Floor 2 - Bedroom



Dimensions: 12'2" x 9'9"
Area: 120 sq. ft
Counted as living area: Yes

Heated: Yes
Finished: Yes
Enclosed: Yes
Contiguous: Yes
Permitted: Yes
Wet space: No
Addition: No
Conversion: No