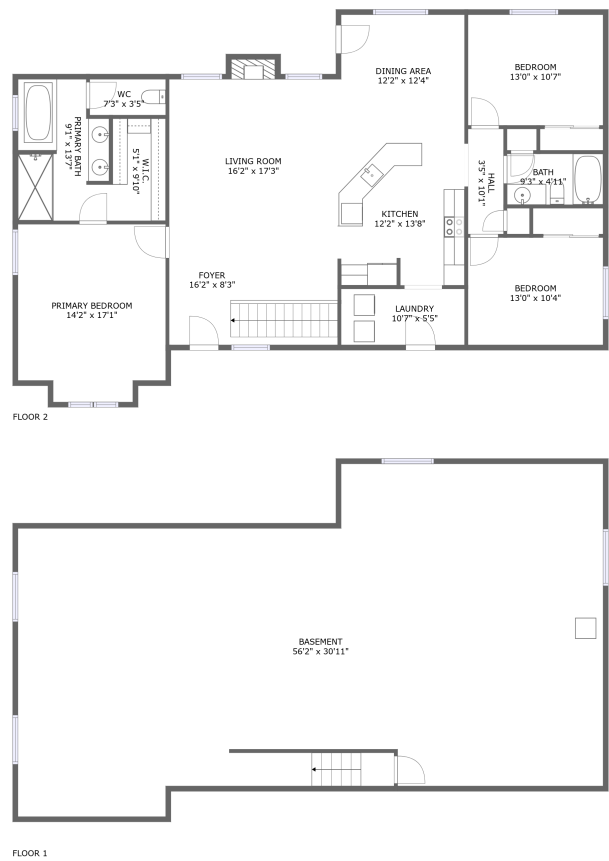



Home report


1221 Bentley Rd,Cheyenne,WY,US




Property summary




0
Garages




3
Bedrooms




2
Bathrooms




0
Half baths



2
Floors



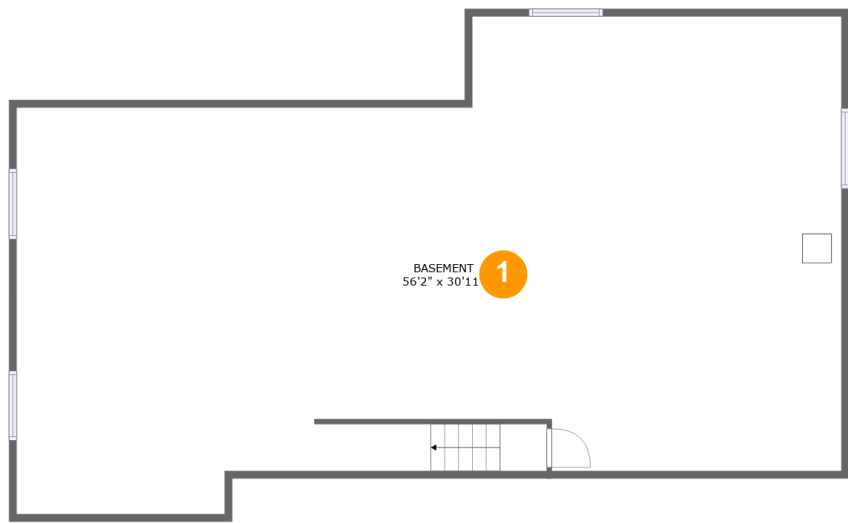
1,745
Gross living
area sqft



3,431
Total sqft

Home report

1221 Bentley Rd,Cheyenne,WY,US



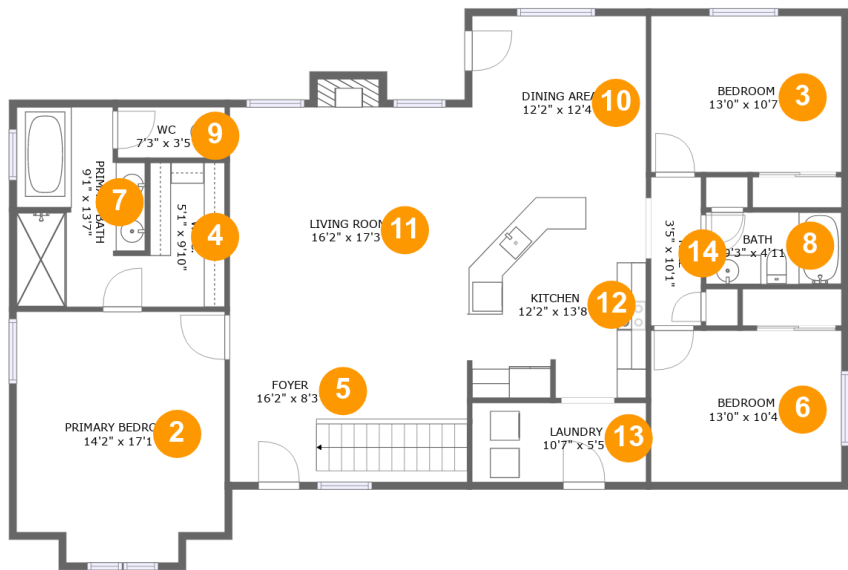
Room dimensions

Floor 1 Total sqft: 1676 Living area: 0

#		Dimensions	sqft	Counted as living area
1	Basement	56'2" x 30'11"	1579 sq. ft	No

Home report

1221 Bentley Rd,Cheyenne,WY,US



Room dimensions

Floor 2 Total sqft: 1755 Living area: 1745

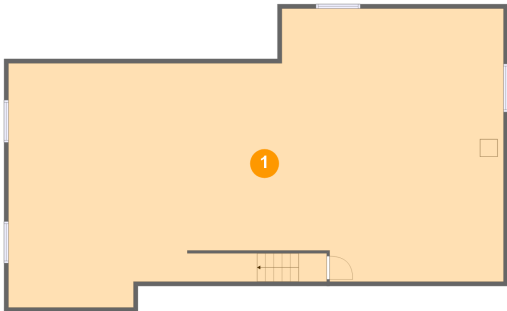
#		Dimensions	sqft	Counted as living area
2	Primary Bedroom	14'2" x 17'1"	228 sq. ft	Yes
3	Bedroom	13'0" x 10'7"	138 sq. ft	Yes
4	W.I.C.	5'1" x 9'10"	50 sq. ft	Yes
5	Foyer	16'2" x 8'3"	134 sq. ft	Yes
6	Bedroom	13'0" x 10'4"	133 sq. ft	Yes
7	Primary Bath	9'1" x 13'7"	110 sq. ft	Yes
8	Bath	9'3" x 4'11"	45 sq. ft	Yes
9	WC	7'3" x 3'5"	25 sq. ft	Yes
10	Dining Area	12'2" x 12'4"	148 sq. ft	Yes
11	Living Room	16'2" x 17'3"	287 sq. ft	Yes
12	Kitchen	12'2" x 13'8"	164 sq. ft	Yes

Home report

1221 Bentley Rd,Cheyenne,WY,US

#		Dimensions	sqft	Counted as living area
13	Laundry	10'7" x 5'5"	64 sq. ft	Yes
14	Hall	3'5" x 10'1"	34 sq. ft	Yes

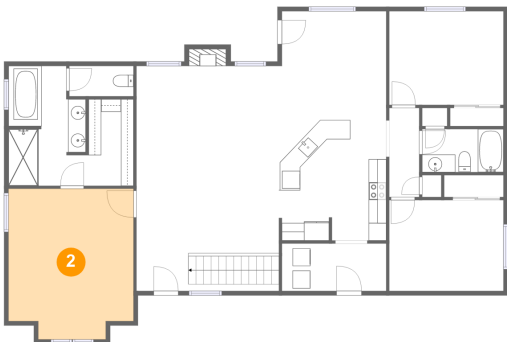
1 Floor 1 - Basement



Dimensions: 56'2" x 30'11"
Area: 1579 sq. ft
Counted as living area: No

Heated: Yes
Finished: No
Enclosed: Yes
Contiguous: Yes
Permitted: Yes
Wet space: No
Addition: No
Conversion: No

2 Floor 2 - Primary Bedroom



Dimensions: 14'2" x 17'1"
Area: 228 sq. ft
Counted as living area: Yes

Heated: Yes
Finished: Yes
Enclosed: Yes
Contiguous: Yes
Permitted: Yes
Wet space: No
Addition: No
Conversion: No

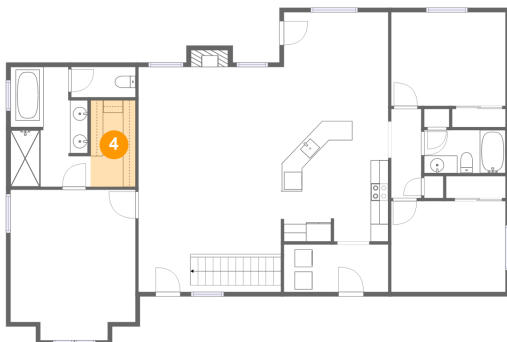
3 Floor 2 - Bedroom



Dimensions: 13'0" x 10'7"
Area: 138 sq. ft
Counted as living area: Yes

Heated: Yes
Finished: Yes
Enclosed: Yes
Contiguous: Yes
Permitted: Yes
Wet space: No
Addition: No
Conversion: No

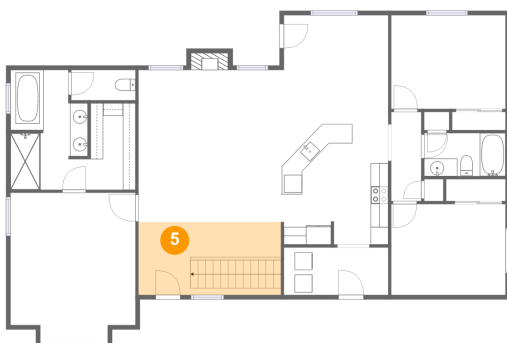
4 Floor 2 - W.I.C.



Dimensions: 5'1" x 9'10"
Area: 50 sq. ft
Counted as living area: Yes

Heated: Yes
Finished: Yes
Enclosed: Yes
Contiguous: Yes
Permitted: Yes
Wet space: No
Addition: No
Conversion: No

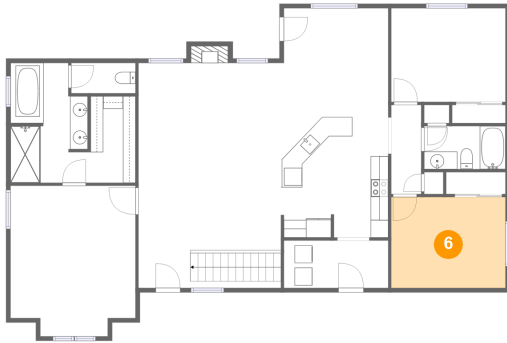
5 Floor 2 - Foyer



Dimensions: 16'2" x 8'3"
Area: 134 sq. ft
Counted as living area: Yes

Heated: Yes
Finished: Yes
Enclosed: Yes
Contiguous: Yes
Permitted: Yes
Wet space: No
Addition: No
Conversion: No

6 Floor 2 - Bedroom



Dimensions: 13'0" x 10'4"
Area: 133 sq. ft
Counted as living area: Yes

Heated: Yes
Finished: Yes
Enclosed: Yes
Contiguous: Yes
Permitted: Yes
Wet space: No
Addition: No
Conversion: No

7 Floor 2 - Primary Bath



Dimensions: 9'1" x 13'7"
Area: 110 sq. ft
Counted as living area: Yes

Heated: Yes
Finished: Yes
Enclosed: Yes
Contiguous: Yes
Permitted: Yes
Wet space: Yes
Addition: No
Conversion: No

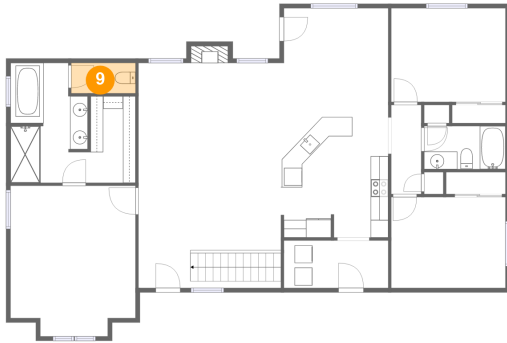
8 Floor 2 - Bath



Dimensions: 9'3" x 4'11"
Area: 45 sq. ft
Counted as living area: Yes

Heated: Yes
Finished: Yes
Enclosed: Yes
Contiguous: Yes
Permitted: Yes
Wet space: Yes
Addition: No
Conversion: No

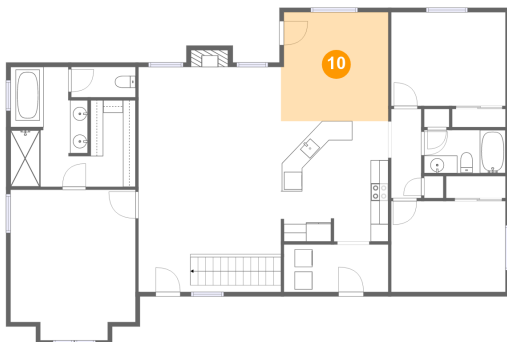
9 Floor 2 - WC



Dimensions: 7'3" x 3'5"
Area: 25 sq. ft
Counted as living area: Yes

Heated: Yes
Finished: Yes
Enclosed: Yes
Contiguous: Yes
Permitted: Yes
Wet space: Yes
Addition: No
Conversion: No

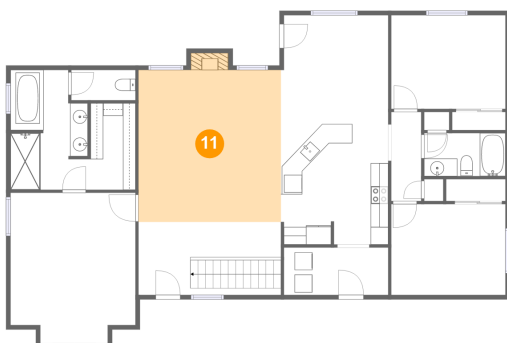
10 Floor 2 - Dining Area



Dimensions: 12'2" x 12'4"
Area: 148 sq. ft
Counted as living area: Yes

Heated: Yes
Finished: Yes
Enclosed: Yes
Contiguous: Yes
Permitted: Yes
Wet space: No
Addition: No
Conversion: No

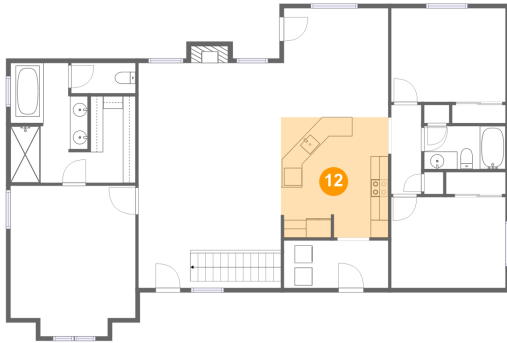
11 Floor 2 - Living Room



Dimensions: 16'2" x 17'3"
Area: 287 sq. ft
Counted as living area: Yes

Heated: Yes
Finished: Yes
Enclosed: Yes
Contiguous: Yes
Permitted: Yes
Wet space: No
Addition: No
Conversion: No

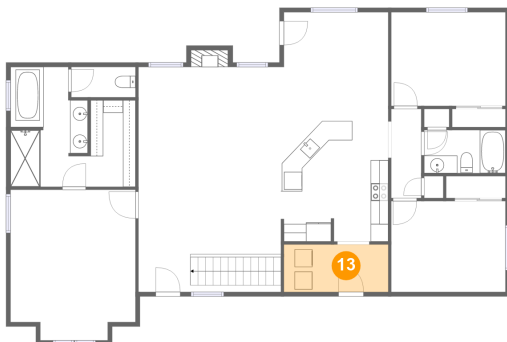
12 Floor 2 - Kitchen



Dimensions: 12'2" x 13'8"
Area: 164 sq. ft
Counted as living area: Yes

Heated: Yes
Finished: Yes
Enclosed: Yes
Contiguous: Yes
Permitted: Yes
Wet space: No
Addition: No
Conversion: No

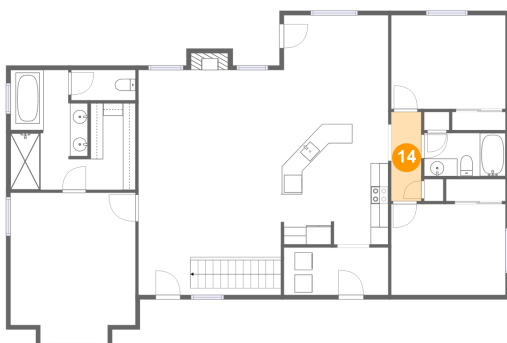
13 Floor 2 - Laundry



Dimensions: 10'7" x 5'5"
Area: 64 sq. ft
Counted as living area: Yes

Heated: Yes
Finished: Yes
Enclosed: Yes
Contiguous: Yes
Permitted: Yes
Wet space: No
Addition: No
Conversion: No

14 Floor 2 - Hall



Dimensions: 3'5" x 10'1"
Area: 34 sq. ft
Counted as living area: Yes

Heated: Yes
Finished: Yes
Enclosed: Yes
Contiguous: Yes
Permitted: Yes
Wet space: No
Addition: No
Conversion: No