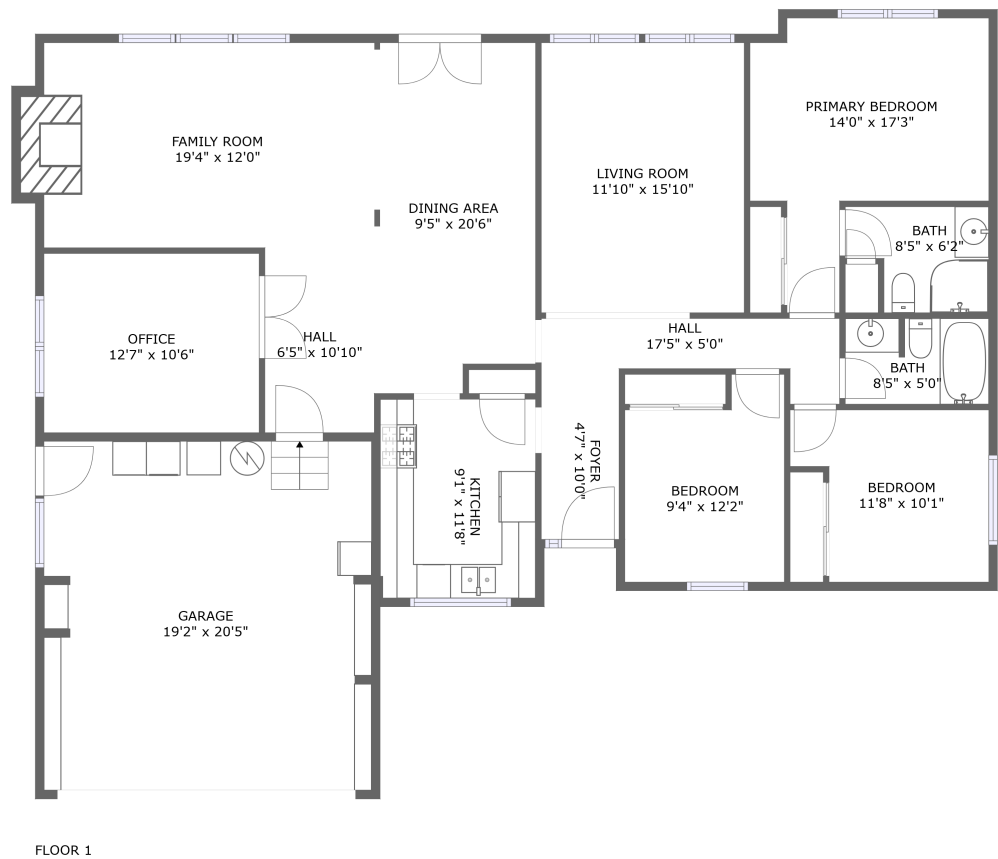


Home report

4580 Northwest Innaha Court, Rockcreek, Portland,
Washington County, Oregon, United States, 97229



Total Area: 1589 sq. ft

Floor 1: 1589 sq. ft

Excluded: Garage 390 sq. ft, Fireplace 10 sq. ft, Walls: 116 sq. ft

Property summary

1 Floors

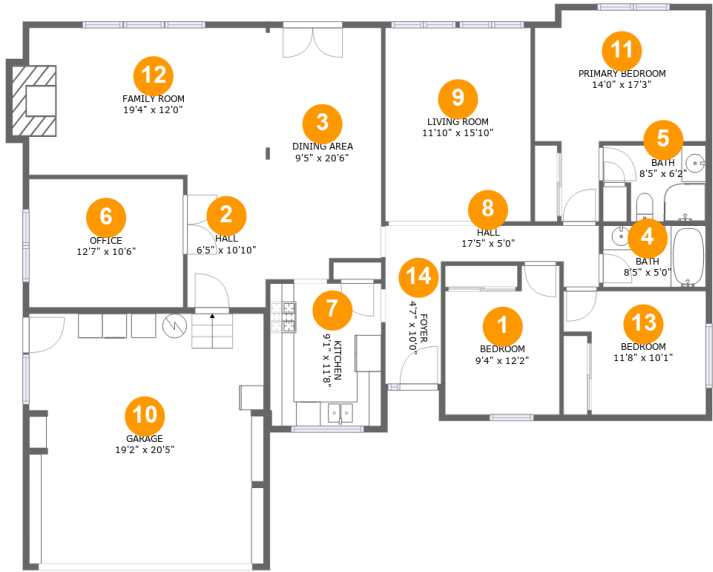
3 Bedrooms

2 Bathrooms

1 Garages

Home report

4580 Northwest Innaha Court, Rockcreek, Portland,
Washington County, Oregon, United States, 97229



Room dimensions

Floor 1 Total:1589sqft Excluded: 400sqft

| # | | Max Dimensions | sqft | Included |
|----|-----------------|-----------------|------------|----------|
| 1 | Bedroom | 9'4" x 12'2" | 101 sq. ft | Yes |
| 2 | Hall | 6'5" x 10'10" | 69 sq. ft | Yes |
| 3 | Dining Area | 9'5" x 20'6" | 186 sq. ft | Yes |
| 4 | Bath | 8'5" x 5'0" | 41 sq. ft | Yes |
| 5 | Bath | 8'5" x 6'2" | 45 sq. ft | Yes |
| 6 | Office | 12'7" x 10'6" | 132 sq. ft | Yes |
| 7 | Kitchen | 9'1" x 11'8" | 106 sq. ft | Yes |
| 8 | Hall | 17'5" x 5'0" | 60 sq. ft | Yes |
| 9 | Living Room | 11'10" x 15'10" | 188 sq. ft | Yes |
| 10 | Garage | 19'2" x 20'5" | 389 sq. ft | No |
| 11 | Primary Bedroom | 14'0" x 17'3" | 167 sq. ft | Yes |

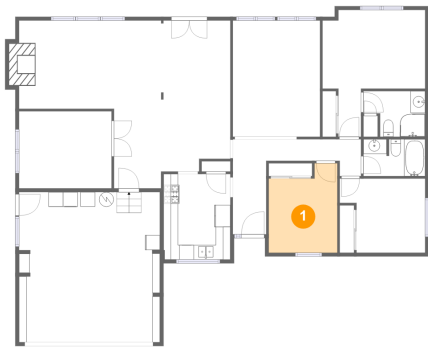
Home report

4580 Northwest Imnaha Court, Rockcreek, Portland,
Washington County, Oregon, United States, 97229

| # | | Max Dimensions | sqft | Included |
|----|-------------|----------------|------------|----------|
| 12 | Family Room | 19'4" x 12'0" | 240 sq. ft | Yes |
| 13 | Bedroom | 11'8" x 10'1" | 102 sq. ft | Yes |
| 14 | Foyer | 4'7" x 10'0" | 46 sq. ft | Yes |

4580 Northwest Imnaha Court, Rockcreek, Portland,
Washington County, Oregon, United States, 97229

1 Floor 1 - Bedroom



Max Dimensions: 9'4" x 12'2"
Calculated Area: 101 sq. ft
Included: Yes

Heated: Yes
Finished: Yes
Enclosed: Yes
Contiguous: Yes
Permitted: Yes
Wet space: No
Addition: No
Conversion: No

2 Floor 1 - Hall

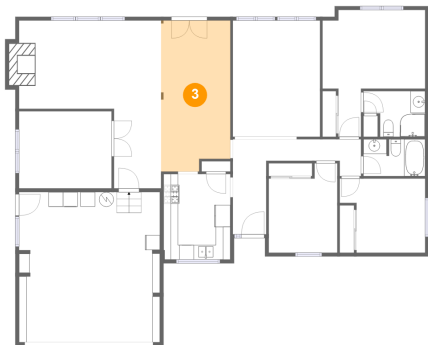


Max Dimensions: 6'5" x 10'10"
Calculated Area: 69 sq. ft
Included: Yes

Heated: Yes
Finished: Yes
Enclosed: Yes
Contiguous: Yes
Permitted: Yes
Wet space: No
Addition: No
Conversion: No

4580 Northwest Imnaha Court, Rockcreek, Portland,
Washington County, Oregon, United States, 97229

3 Floor 1 - Dining Area



Max Dimensions: 9'5" x 20'6"
Calculated Area: 186 sq. ft
Included: Yes

Heated: Yes
Finished: Yes
Enclosed: Yes
Contiguous: Yes
Permitted: Yes
Wet space: No
Addition: No
Conversion: No

4 Floor 1 - Bath



Max Dimensions: 8'5" x 5'0"
Calculated Area: 41 sq. ft
Included: Yes

Heated: Yes
Finished: Yes
Enclosed: Yes
Contiguous: Yes
Permitted: Yes
Wet space: Yes
Addition: No
Conversion: No

5 Floor 1 - Bath

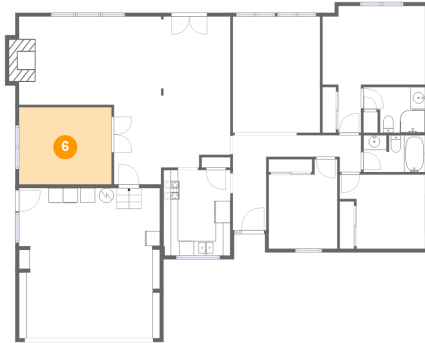


Max Dimensions: 8'5" x 6'2"
Calculated Area: 45 sq. ft
Included: Yes

Heated: Yes
Finished: Yes
Enclosed: Yes
Contiguous: Yes
Permitted: Yes
Wet space: Yes
Addition: No
Conversion: No

4580 Northwest Imnaha Court, Rockcreek, Portland,
Washington County, Oregon, United States, 97229

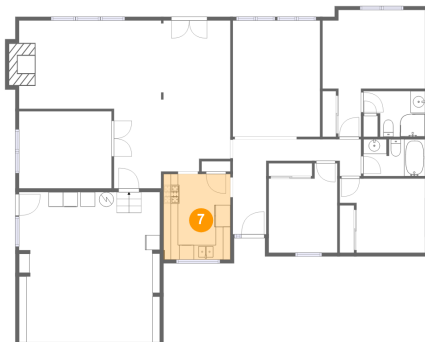
6 Floor 1 - Office



Max Dimensions: 12'7" x 10'6"
Calculated Area: 132 sq. ft
Included: Yes

Heated: Yes
Finished: Yes
Enclosed: Yes
Contiguous: Yes
Permitted: Yes
Wet space: No
Addition: No
Conversion: No

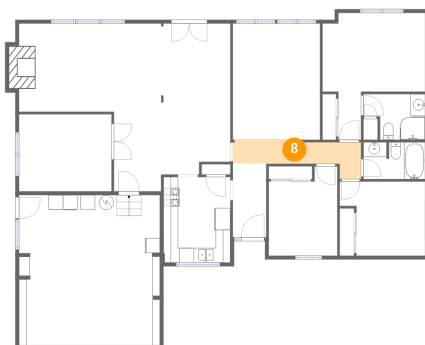
7 Floor 1 - Kitchen



Max Dimensions: 9'1" x 11'8"
Calculated Area: 106 sq. ft
Included: Yes

Heated: Yes
Finished: Yes
Enclosed: Yes
Contiguous: Yes
Permitted: Yes
Wet space: No
Addition: No
Conversion: No

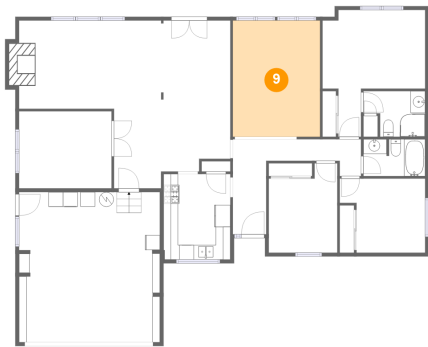
8 Floor 1 - Hall



Max Dimensions: 17'5" x 5'0"
Calculated Area: 60 sq. ft
Included: Yes

Heated: Yes
Finished: Yes
Enclosed: Yes
Contiguous: Yes
Permitted: Yes
Wet space: No
Addition: No
Conversion: No

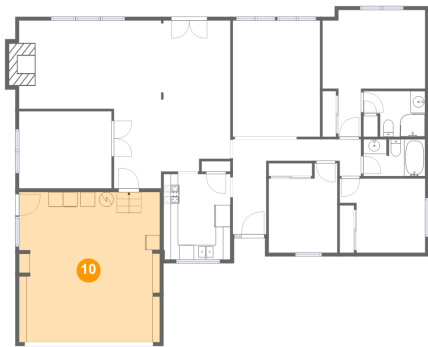
9 Floor 1 - Living Room



Max Dimensions: 11'10" x 15'10"
Calculated Area: 188 sq. ft
Included: Yes

Heated: Yes
Finished: Yes
Enclosed: Yes
Contiguous: Yes
Permitted: Yes
Wet space: No
Addition: No
Conversion: No

10 Floor 1 - Garage



Max Dimensions: 19'2" x 20'5"
Calculated Area: 389 sq. ft
Included: No

Heated: No
Finished: No
Enclosed: Yes
Contiguous: Yes
Permitted: Yes
Wet space: No
Addition: No
Conversion: No

11 Floor 1 - Primary Bedroom



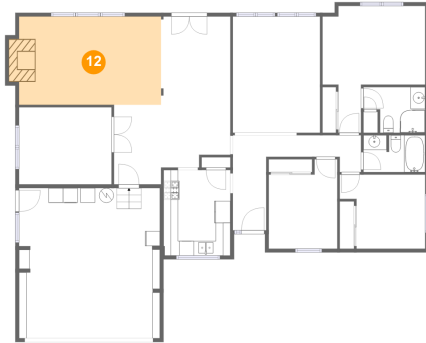
Max Dimensions: 14'0" x 17'3"
Calculated Area: 167 sq. ft
Included: Yes

Heated: Yes
Finished: Yes
Enclosed: Yes
Contiguous: Yes
Permitted: Yes
Wet space: No
Addition: No
Conversion: No

Home report

4580 Northwest Imnaha Court, Rockcreek, Portland,
Washington County, Oregon, United States, 97229

12 Floor 1 - Family Room



Max Dimensions: 19'4" x 12'0"
Calculated Area: 240 sq. ft
Included: Yes

Heated: Yes
Finished: Yes
Enclosed: Yes
Contiguous: Yes
Permitted: Yes
Wet space: No
Addition: No
Conversion: No

13 Floor 1 - Bedroom



Max Dimensions: 11'8" x 10'1"
Calculated Area: 102 sq. ft
Included: Yes

Heated: Yes
Finished: Yes
Enclosed: Yes
Contiguous: Yes
Permitted: Yes
Wet space: No
Addition: No
Conversion: No

14 Floor 1 - Foyer



Max Dimensions: 4'7" x 10'0"
Calculated Area: 46 sq. ft
Included: Yes

Heated: Yes
Finished: Yes
Enclosed: Yes
Contiguous: Yes
Permitted: Yes
Wet space: No
Addition: No
Conversion: No