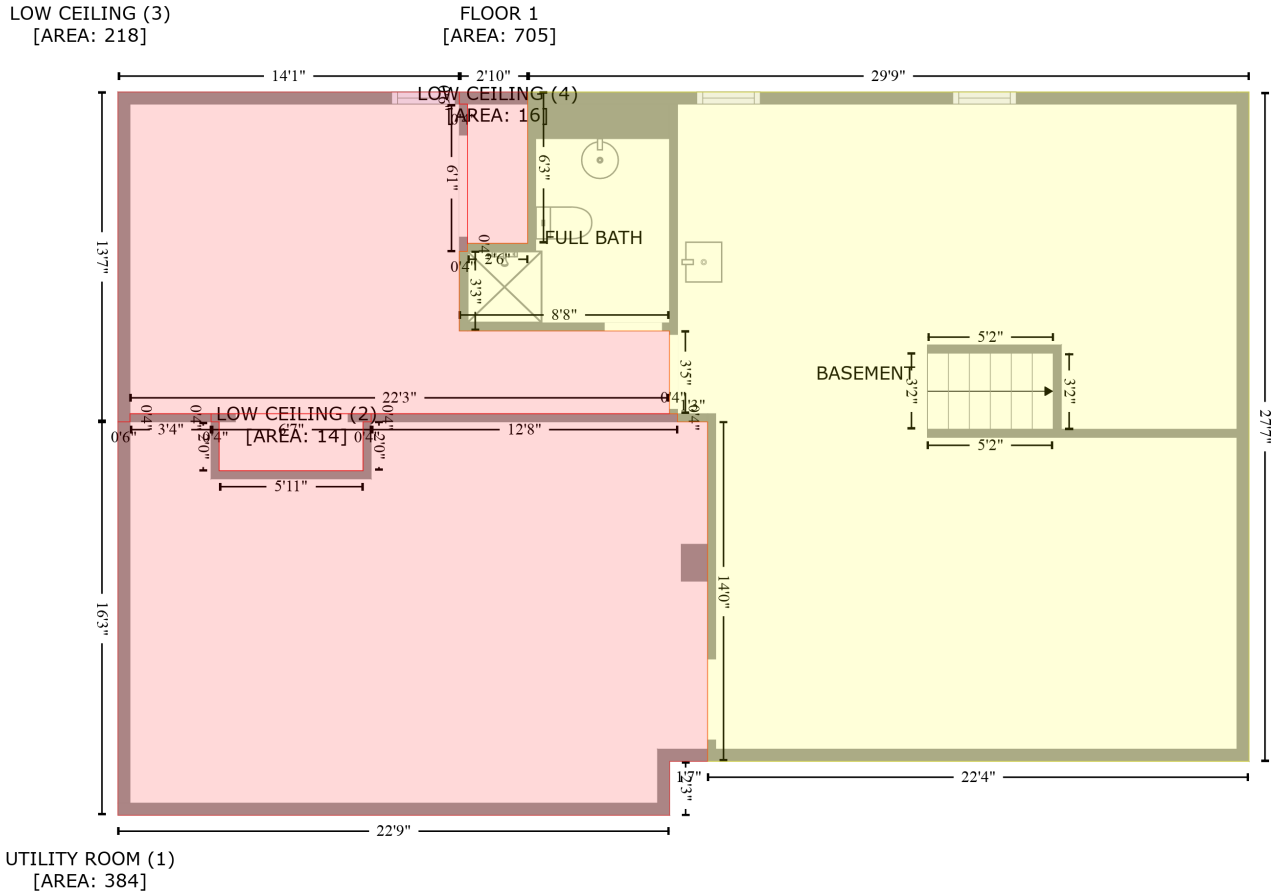


406 Ira St,Urbana,IL,US

Gross Living Area: 1361 sq. ft



Space	Area (sq. ft)	Calculation <small>Coordinate Polygon Area Algorithm using inches</small>
FLOOR 1 (Living area)	705	$-((365.5 + 365.5) * (262.1 - 593.1) + (365.5 + 97.6) * (593.1 - 593.1) + (97.6 + 97.6) * (593.1 - 425.2) + (97.6 + 82.7) * (425.2 - 425.2) + (82.7 + 82.7) * (425.2 - 421.2) + (82.7 + 78.7) * (421.2 - 421.2) + (78.7 + 78.7) * (421.2 - 380.2) + (78.7 + -25.2) * (380.2 - 380.2) + (-25.2 + -25.2) * (380.2 - 340.9) + (-25.2 + -21.2) * (340.9 - 340.9) + (-21.2 + -21.2) * (340.9 - 336.9) + (-21.2 + 8.6) * (336.9 - 336.9) + (8.6 + 8.6) * (336.9 - 262.1) + (8.6 + 365.5) * (262.1 - 262.1)) * 0.5 * 0.00694$
UTILITY ROOM (Non-living area)	384	$-((-148 + -148) * (421.2 - 425.2) + (-148 + -144) * (425.2 - 425.2) + (-144 + -144) * (425.2 - 449.4) + (-144 + -72.9) * (449.4 - 449.4) + (-72.9 + -72.9) * (449.4 - 425.2) + (-72.9 + -68.9) * (425.2 - 425.2) + (-68.9 + -68.9) * (425.2 - 421.2) + (-68.9 + 82.7) * (421.2 - 421.2) + (82.7 + 82.7) * (421.2 - 425.2) + (82.7 + 97.6) * (425.2 - 425.2) + (97.6 + 97.6) * (425.2 - 593.1) + (97.6 + 78.9) * (593.1 - 593.1) + (78.9 + 78.9) * (593.1 - 619.7) + (78.9 + -194.1) * (619.7 - 619.7) + (-194.1 + -194.1) * (619.7 - 425.2) + (-194.1 + -188.1) * (425.2 - 425.2) + (-188.1 + -188.1) * (425.2 - 421.2) + (-188.1 + -148) * (421.2 - 421.2)) * 0.5 * 0.00694$
LOW CEILING (Non-living area)	14	$-((-68.9 + -68.9) * (421.2 - 425.2) + (-68.9 + -72.9) * (425.2 - 425.2) + (-72.9 + -72.9) * (425.2 - 449.4) + (-72.9 + -144) * (449.4 - 449.4) + (-144 + -144) * (449.4 - 425.2) + (-144 + -148) * (425.2 - 425.2) + (-148 + -148) * (425.2 - 421.2) + (-148 + -68.9) * (421.2 - 421.2)) * 0.5 * 0.00694$
LOW CEILING (Non-living area)	218	$-((-25.2 + -25.2) * (262.1 - 268.1) + (-25.2 + -21.2) * (268.1 - 268.1) + (-21.2 + -21.2) * (268.1 - 340.9) + (-21.2 + -25.2) * (340.9 - 340.9) + (-25.2 + -25.2) * (340.9 - 380.2) + (-25.2 + 78.7) * (380.2 - 380.2) + (78.7 + 78.7) * (380.2 - 421.2) + (78.7 + -188.1) * (421.2 - 421.2) + (-188.1 +$

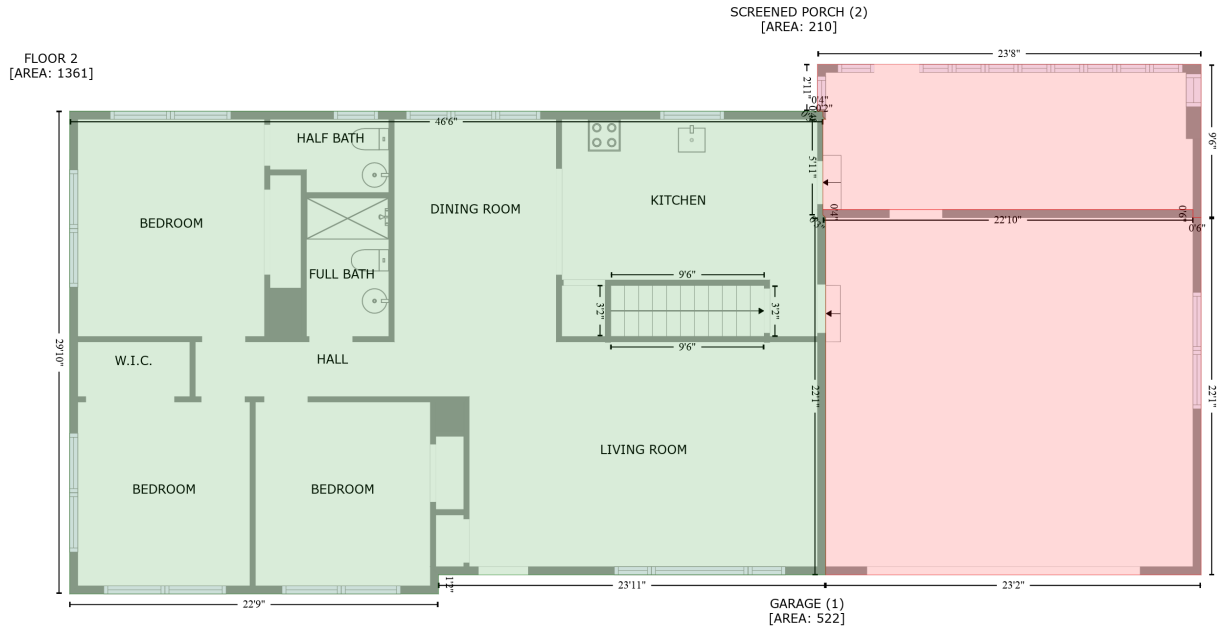
406 Ira St,Urbana,IL,US

Gross Living Area: 1361 sq. ft

Space	Area (sq. ft)	Calculation <small>Coordinate Polygon Area Algorithm using inches</small>
LOW CEILING (Non-living area)	16	$\begin{aligned} & -188.1 * (421.2 - 425.2) + (-188.1 + -194.1) * (425.2 - 425.2) + (-194.1 + -194.1) * (425.2 - 262.1) \\ & + (-194.1 + -25.2) * (262.1 - 262.1) * 0.5 * 0.00694 \\ & -((8.6 + 8.6) * (262.1 - 336.9) + (8.6 + -21.2) * (336.9 - 336.9) + (-21.2 + -21.2) * (336.9 - 268.1) + \\ & (-21.2 + -25.2) * (268.1 - 268.1) + (-25.2 + -25.2) * (268.1 - 262.1) + (-25.2 + 8.6) * (262.1 - 262.1)) \\ & * 0.5 * 0.00694 \end{aligned}$

406 Ira St,Urbana,IL,US

Gross Living Area: 1361 sq. ft



Space	Area (sq. ft)	Calculation
FLOOR 2 (Living area)	1361	Coordinate Polygon Area Algorithm using inches $-((363.5 + 363.5) * (262.1 - 266.1) + (363.5 + 365.5) * (266.1 - 268.1) + (365.5 + 363.5) * (268.1 - 268.1) + (363.5 + 363.5) * (268.1 - 339) + (363.5 + 365.5) * (339 - 341) + (365.5 + 365.5) * (341 - 605.6) + (365.5 + 78.9) * (605.6 - 605.6) + (78.9 + 78.9) * (605.6 - 619.7) + (78.9 + -194.1) * (619.7 - 619.7) + (-194.1 + -194.1) * (619.7 - 262.1) + (-194.1 + 363.5) * (262.1 - 262.1)) * 0.5 * 0.00694$
GARAGE (Non-living area)	522	$-((637.4 + 637.4) * (335 - 341) + (637.4 + 643.4) * (341 - 341) + (643.4 + 643.4) * (341 - 605.6) + (643.4 + 365.5) * (605.6 - 605.6) + (365.5 + 365.5) * (605.6 - 341) + (365.5 + 363.5) * (341 - 339) + (363.5 + 363.5) * (339 - 335) + (363.5 + 637.4) * (335 - 335)) * 0.5 * 0.00694$
SCREENED PORCH (Non-living area)	210	$-((643.4 + 643.4) * (227.4 - 341) + (643.4 + 637.4) * (341 - 341) + (637.4 + 637.4) * (341 - 335) + (637.4 + 363.5) * (335 - 335) + (363.5 + 363.5) * (335 - 268.1) + (363.5 + 365.5) * (268.1 - 268.1) + (365.5 + 363.5) * (268.1 - 266.1) + (363.5 + 363.5) * (266.1 - 262.1) + (363.5 + 359.5) * (262.1 - 262.1) + (359.5 + 359.5) * (262.1 - 227.4) + (359.5 + 643.4) * (227.4 - 227.4)) * 0.5 * 0.00694$