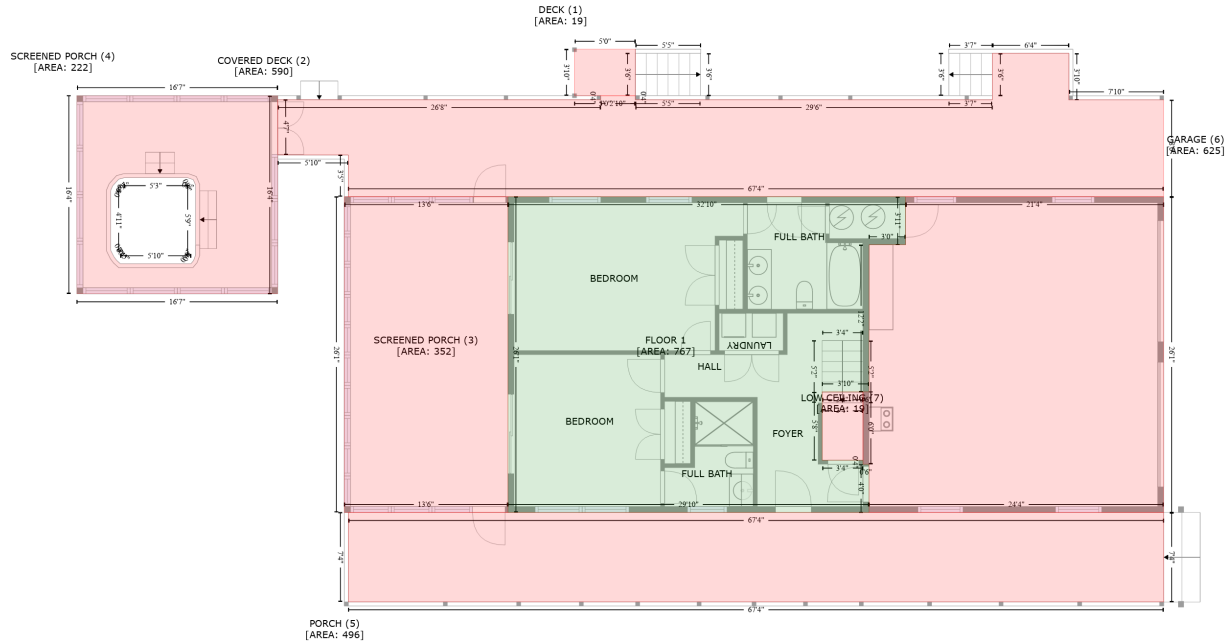


606 Rocky Branch Rd, Baker, Hardy County, West Virginia, United States, 26801

Gross Living Area: 2529 sq. ft



Space	Area (sq. ft)	Calculation
FLOOR 1 (Living area)	767	$-\left((618.9 + 618.9) * (475.4 - 522.9) + (618.9 + 582.7) * (522.9 - 522.9) + (582.7 + 582.7) * (522.9 - 668.6) + (582.7 + 536.3) * (668.6 - 668.6) + (536.3 + 536.3) * (668.6 - 736.2) + (536.3 + 576.7) * (736.2 - 736.2) + (576.7 + 576.7) * (736.2 - 740.2) + (576.7 + 582.7) * (740.2 - 740.2) + (582.7 + 582.7) * (740.2 - 788.1) + (582.7 + 225) * (788.1 - 788.1) + (225 + 225) * (788.1 - 475.4) + (225 + 618.9) * (475.4 - 475.4)\right) * 0.5 * 0.00694$
DECK (Non-living area)	19	$-\left((351.2 + 351.2) * (329.3 - 375.3) + (351.2 + 290.9) * (375.3 - 375.4) + (290.9 + 290.9) * (375.4 - 329.3) + (290.9 + 351.2) * (329.3 - 329.3)\right) * 0.5 * 0.00694$
COVERED DECK (Non-living area)	590	$-\left((780.7 + 780.7) * (333.3 - 379.4) + (780.7 + 874.5) * (379.4 - 379.4) + (874.5 + 874.5) * (379.4 - 475.4) + (874.5 + 66.9) * (475.4 - 475.4) + (66.9 + 66.9) * (475.4 - 434.1) + (66.9 + -2.9) * (434.1 - 434.1) + (-2.9 + -3.1) * (434.1 - 379.3) + (-3.1 + 316.8) * (379.3 - 379.3) + (316.8 + 316.8) * (379.3 - 375.3) + (316.8 + 351.2) * (375.3 - 375.3) + (351.2 + 351.2) * (375.3 - 379.3) + (351.2 + 704.8) * (379.3 - 379.3) + (704.8 + 704.8) * (379.3 - 333.4) + (704.8 + 780.7) * (333.4 - 333.3)\right) * 0.5 * 0.00694$
SCREENED PORCH (Non-living area)	352	$-\left((225 + 225) * (475.4 - 788.1) + (225 + 62.9) * (788.1 - 788.1) + (62.9 + 62.9) * (788.1 - 475.4) + (62.9 + 225) * (475.4 - 475.4)\right) * 0.5 * 0.00694$
SCREENED PORCH (Non-living area)	222	$-\left((-3 + -3) * (375.3 - 571.6) + (-3 + -202) * (571.6 - 571.6) + (-202 + -202) * (571.6 - 375.3) + (-202 + -3) * (375.3 - 375.3)\right) * 0.5 * 0.00694 + \left(-(-92.2 + -155) * (456.6 - 456.6) + (-155 + -160.5) * (456.6 - 458) + (-160.5 + -166.5) * (458 - 464.6) + (-166.5 + -168.5) * (464.6 - 469.3) + (-168.5 + -168.5) * (469.3 - 528.3) + (-168.5 + -165.4) * (528.3 - 534.7) + (-165.4 + -162.7) * (534.7 - 538.3) + (-162.7 + -158.9) * (538.3 - 541.7) + (-158.9 + -89) * (541.7 - 541.7) + (-89 + -86.4) * (541.7 - 538.6) + (-86.4 + -84.4) * (538.6 - 532.9) + (-84.4 + -84.4) * (532.9 - 464.1) + (-84.4 + -86.7) * (464.1 - 458.5) + (-86.7 + -92.2) * (458.5 - 456.6)\right) * 0.5 * 0.00694$
PORCH (Non-living area)	496	$-\left((874.5 + 874.6) * (788.1 - 876.6) + (874.6 + 67) * (876.6 - 876.6) + (67 + 66.9) * (876.6 - 788.1) + (66.9 + 874.5) * (788.1 - 788.1)\right) * 0.5 * 0.00694$
GARAGE (Non-living area)	625	$-\left((874.5 + 874.5) * (475.4 - 788.1) + (874.5 + 582.7) * (788.1 - 788.1) + (582.7 + 582.7) * (788.1 - 740.2) + (582.7 + 576.7) * (740.2 - 740.2) + (576.7 + 576.7) * (740.2 - 668.6) + (576.7 + 582.7) * (668.6 - 668.6) + (582.7 + 582.7) * (668.6 - 522.9) + (582.7 + 618.9) * (522.9 - 522.9) + (618.9 + 522.9) * (522.9 - 475.4)\right) * 0.5 * 0.00694$

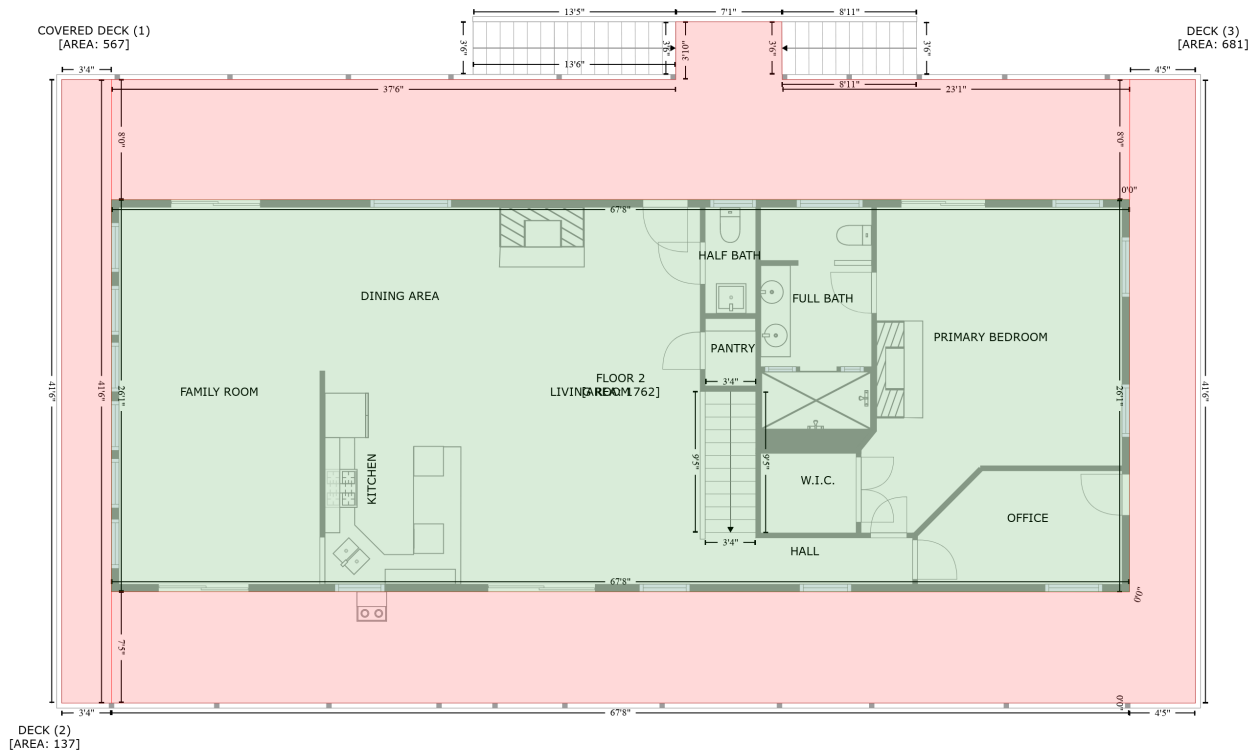
606 Rocky Branch Rd, Baker, Hardy County, West Virginia, United States, 26801

Gross Living Area: 2529 sq. ft

Space	Area (sq. ft)	Calculation <small>Coordinate Polygon Area Algorithm using inches</small>
LOW CEILING (Non-living area)	19	$618.9 * (522.9 - 475.4) + (618.9 + 874.5) * (475.4 - 475.4) * 0.5 * 0.00694$ $-((576.7 + 576.7) * (668.6 - 736.2) + (576.7 + 536.3) * (736.2 - 736.2) + (536.3 + 536.3) * (736.2 - 668.6) + (536.3 + 576.7) * (668.6 - 668.6)) * 0.5 * 0.00694$

606 Rocky Branch Rd, Baker, Hardy County, West Virginia, United States, 26801

Gross Living Area: 2529 sq. ft



Space	Area (sq. ft)	Calculation
FLOOR 2 (Living area)	1762	$-\left((868.2 + 868.2) * (482.3 - 795) + (868.2 + 56.6) * (795 - 795) + (56.6 + 56.6) * (795 - 482.3) + (56.6 + 868.2) * (482.3 - 482.3)\right) * 0.5 * 0.00694$
COVERED DECK (Non-living area)	567	$-\left((591 + 591.3) * (340.3 - 386.3) + (591.3 + 868.4) * (386.3 - 386.3) + (868.4 + 868.4) * (386.3 - 481.9) + (868.4 + 56.6) * (481.9 - 482.3) + (56.6 + 56.6) * (482.3 - 386.3) + (56.6 + 506.4) * (386.3 - 386.3) + (506.4 + 506.4) * (386.3 - 340.3) + (506.4 + 591) * (340.3 - 340.3)\right) * 0.5 * 0.00694$
DECK (Non-living area)	137	$-\left((56.6 + 56.6) * (386.3 - 883.8) + (56.6 + 16.9) * (883.8 - 883.9) + (16.9 + 16.9) * (883.9 - 386.3) + (16.9 + 56.6) * (386.3 - 386.3)\right) * 0.5 * 0.00694$
DECK (Non-living area)	681	$-\left((920.8 + 920.8) * (386.3 - 883.9) + (920.8 + 868.1) * (883.9 - 883.9) + (868.1 + 868.1) * (883.9 - 883.8) + (868.1 + 56.6) * (883.8 - 883.8) + (56.6 + 56.6) * (883.8 - 795) + (56.6 + 868.1) * (795 - 795.3) + (868.1 + 868.2) * (795.3 - 795) + (868.2 + 868.2) * (795 - 482.3) + (868.2 + 868.1) * (482.3 - 482.3) + (868.1 + 868.3) * (482.3 - 386.3) + (868.3 + 920.8) * (386.3 - 386.3)\right) * 0.5 * 0.00694$