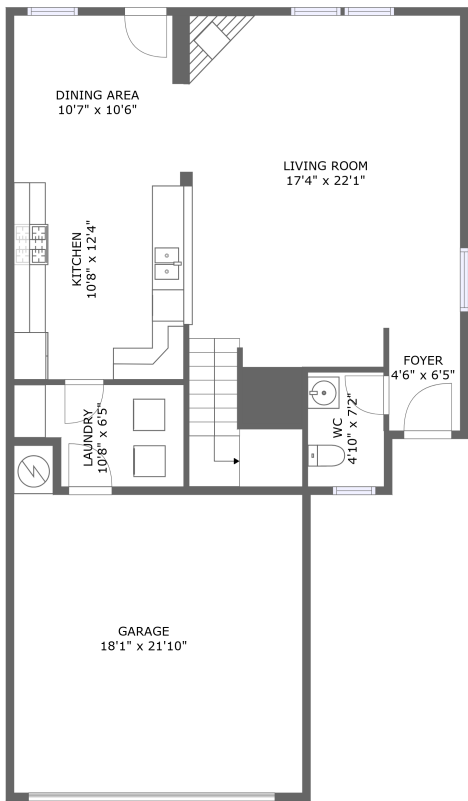
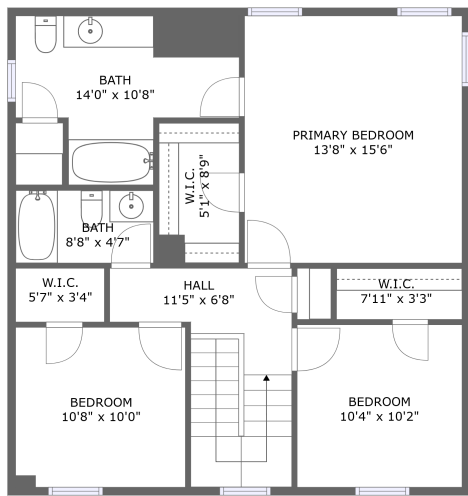


Home report

2726 Skyview Ridge Court, Houston, Texas 77047, United States



FLOOR 1



FLOOR 2

**Total Area: 1632 sq. ft**  
Floor 1: 803 sq. ft, Floor 2: 829 sq. ft  
Excluded: Garage 347 sq. ft, Walls: 148 sq. ft

Property summary

 **2** Floors

 **3** Bedrooms

 **2** Bathrooms

Home report

**2726 Skyview Ridge Court, Houston, Texas 77047, United States**



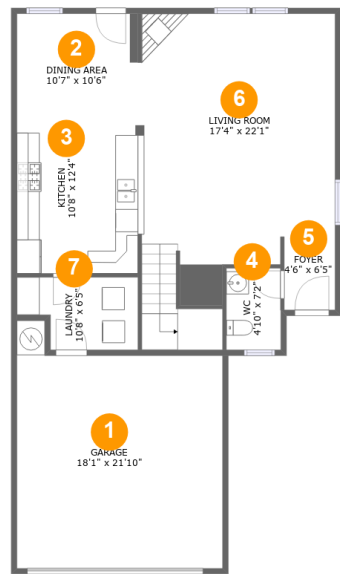
**1**  
Half baths



**1**  
Garages

Home report

2726 Skyview Ridge Court, Houston, Texas 77047, United States



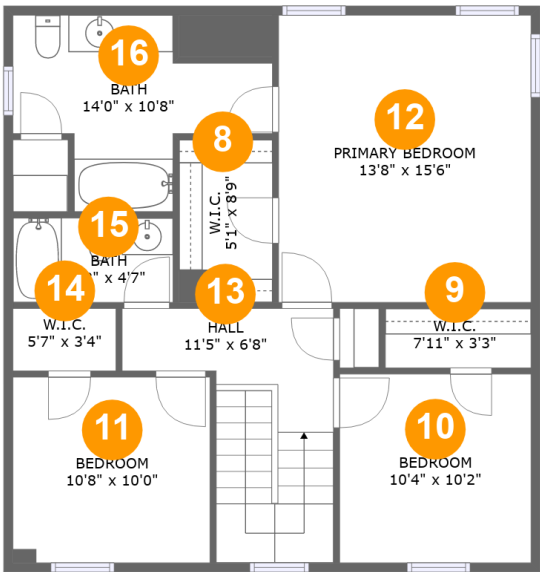
Room dimensions

Floor 1 Total:803sqft    Excluded: 347sqft

#		Max Dimensions	sqft	Included
1	Garage	18'1" x 21'10"	347 sq. ft	No
2	Dining Area	10'7" x 10'6"	112 sq. ft	Yes
3	Kitchen	10'8" x 12'4"	131 sq. ft	Yes
4	WC	4'10" x 7'2"	34 sq. ft	Yes
5	Foyer	4'6" x 6'5"	29 sq. ft	Yes
6	Living Room	17'4" x 22'1"	420 sq. ft	Yes
7	Laundry	10'8" x 6'5"	59 sq. ft	Yes

Home report

2726 Skyview Ridge Court, Houston, Texas 77047, United States



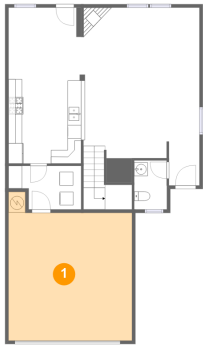
Room dimensions

Floor 2 Total:829sqft   Excluded: 0sqft

#		Max Dimensions	sqft	Included
8	W.I.C.	5'1" x 8'9"	44 sq. ft	Yes
9	W.I.C.	7'11" x 3'3"	25 sq. ft	Yes
10	Bedroom	10'4" x 10'2"	106 sq. ft	Yes
11	Bedroom	10'8" x 10'0"	107 sq. ft	Yes
12	Primary Bedroom	13'8" x 15'6"	212 sq. ft	Yes
13	Hall	11'5" x 6'8"	104 sq. ft	Yes
14	W.I.C.	5'7" x 3'4"	19 sq. ft	Yes
15	Bath	8'8" x 4'7"	39 sq. ft	Yes
16	Bath	14'0" x 10'8"	98 sq. ft	Yes

2726 Skyview Ridge Court, Houston, Texas 77047, United States

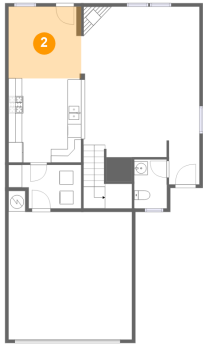
1 Floor 1 - Garage



Max Dimensions: 18'1" x 21'10"  
Calculated Area: 347 sq. ft  
Included: No

Heated: No  
Finished: No  
Enclosed: Yes  
Contiguous: Yes  
Permitted: Yes  
Wet space: No  
Addition: No  
Conversion: No

2 Floor 1 - Dining Area

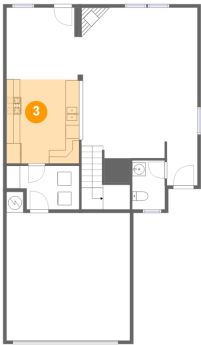


Max Dimensions: 10'7" x 10'6"  
Calculated Area: 112 sq. ft  
Included: Yes

Heated: Yes  
Finished: Yes  
Enclosed: Yes  
Contiguous: Yes  
Permitted: Yes  
Wet space: No  
Addition: No  
Conversion: No

2726 Skyview Ridge Court, Houston, Texas 77047, United States

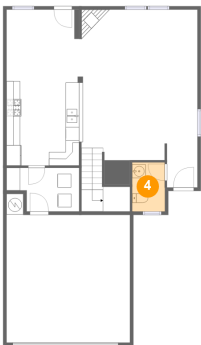
3 Floor 1 - Kitchen



Max Dimensions: 10'8" x 12'4"  
Calculated Area: 131 sq. ft  
Included: Yes

Heated: Yes  
Finished: Yes  
Enclosed: Yes  
Contiguous: Yes  
Permitted: Yes  
Wet space: No  
Addition: No  
Conversion: No

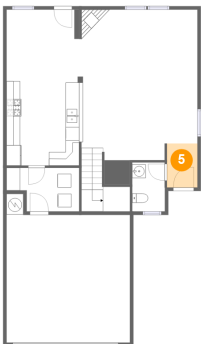
4 Floor 1 - WC



Max Dimensions: 4'10" x 7'2"  
Calculated Area: 34 sq. ft  
Included: Yes

Heated: Yes  
Finished: Yes  
Enclosed: Yes  
Contiguous: Yes  
Permitted: Yes  
Wet space: Yes  
Addition: No  
Conversion: No

5 Floor 1 - Foyer

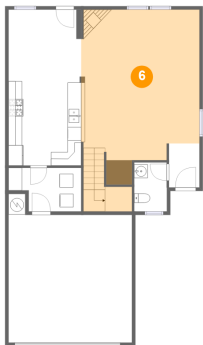


Max Dimensions: 4'6" x 6'5"  
Calculated Area: 29 sq. ft  
Included: Yes

Heated: Yes  
Finished: Yes  
Enclosed: Yes  
Contiguous: Yes  
Permitted: Yes  
Wet space: No  
Addition: No  
Conversion: No

2726 Skyview Ridge Court, Houston, Texas 77047, United States

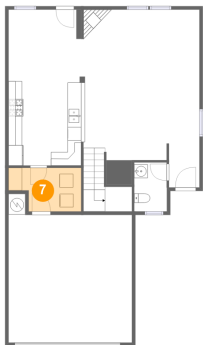
6 Floor 1 - Living Room



Max Dimensions: 17'4" x 22'1"  
Calculated Area: 420 sq. ft  
Included: Yes

Heated: Yes  
Finished: Yes  
Enclosed: Yes  
Contiguous: Yes  
Permitted: Yes  
Wet space: No  
Addition: No  
Conversion: No

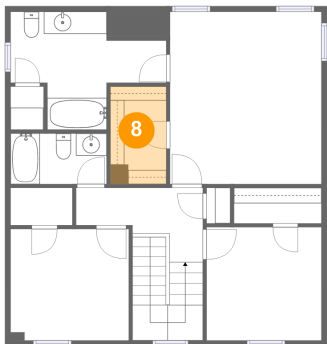
7 Floor 1 - Laundry



Max Dimensions: 10'8" x 6'5"  
Calculated Area: 59 sq. ft  
Included: Yes

Heated: Yes  
Finished: Yes  
Enclosed: Yes  
Contiguous: Yes  
Permitted: Yes  
Wet space: No  
Addition: No  
Conversion: No

8 Floor 2 - W.I.C.

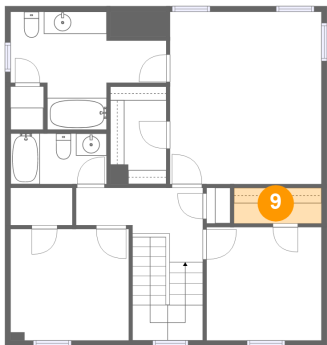


Max Dimensions: 5'1" x 8'9"  
Calculated Area: 44 sq. ft  
Included: Yes

Heated: Yes  
Finished: Yes  
Enclosed: Yes  
Contiguous: Yes  
Permitted: Yes  
Wet space: No  
Addition: No  
Conversion: No

2726 Skyview Ridge Court, Houston, Texas 77047, United States

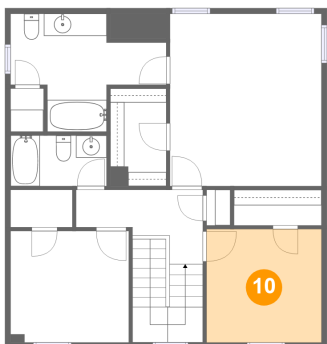
9 Floor 2 - W.I.C.



Max Dimensions: 7'11" x 3'3"  
Calculated Area: 25 sq. ft  
Included: Yes

Heated: Yes  
Finished: Yes  
Enclosed: Yes  
Contiguous: Yes  
Permitted: Yes  
Wet space: No  
Addition: No  
Conversion: No

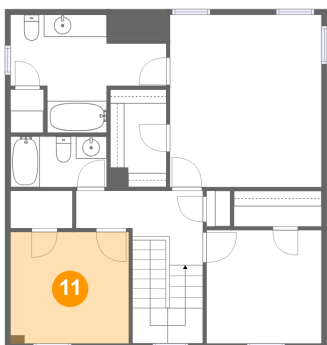
10 Floor 2 - Bedroom



Max Dimensions: 10'4" x 10'2"  
Calculated Area: 106 sq. ft  
Included: Yes

Heated: Yes  
Finished: Yes  
Enclosed: Yes  
Contiguous: Yes  
Permitted: Yes  
Wet space: No  
Addition: No  
Conversion: No

11 Floor 2 - Bedroom

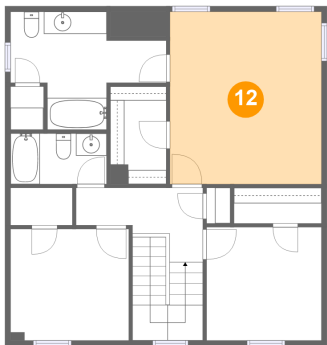


Max Dimensions: 10'8" x 10'0"  
Calculated Area: 107 sq. ft  
Included: Yes

Heated: Yes  
Finished: Yes  
Enclosed: Yes  
Contiguous: Yes  
Permitted: Yes  
Wet space: No  
Addition: No  
Conversion: No



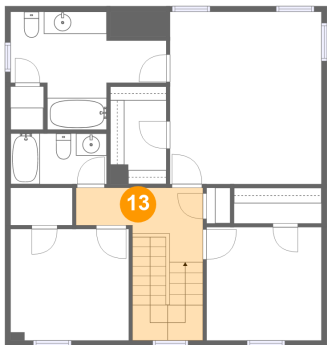
12 Floor 2 - Primary Bedroom



Max Dimensions: 13'8" x 15'6"  
Calculated Area: 212 sq. ft  
Included: Yes

Heated: Yes  
Finished: Yes  
Enclosed: Yes  
Contiguous: Yes  
Permitted: Yes  
Wet space: No  
Addition: No  
Conversion: No

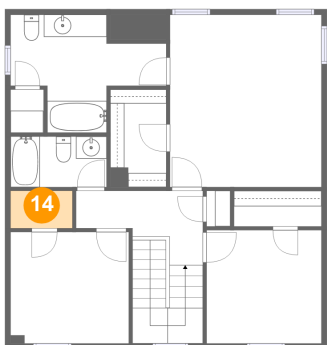
13 Floor 2 - Hall



Max Dimensions: 11'5" x 6'8"  
Calculated Area: 104 sq. ft  
Included: Yes

Heated: Yes  
Finished: Yes  
Enclosed: Yes  
Contiguous: Yes  
Permitted: Yes  
Wet space: No  
Addition: No  
Conversion: No

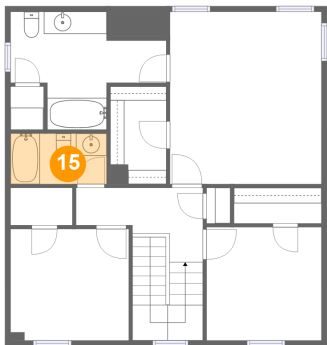
14 Floor 2 - W.I.C.



Max Dimensions: 5'7" x 3'4"  
Calculated Area: 19 sq. ft  
Included: Yes

Heated: Yes  
Finished: Yes  
Enclosed: Yes  
Contiguous: Yes  
Permitted: Yes  
Wet space: No  
Addition: No  
Conversion: No

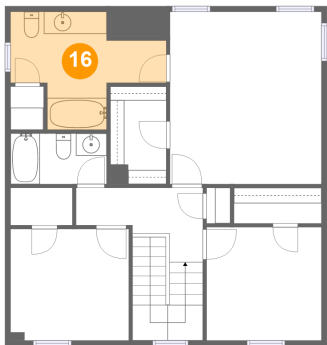
15 Floor 2 - Bath



Max Dimensions: 8'8" x 4'7"  
Calculated Area: 39 sq. ft  
Included: Yes

Heated: Yes  
Finished: Yes  
Enclosed: Yes  
Contiguous: Yes  
Permitted: Yes  
Wet space: Yes  
Addition: No  
Conversion: No

16 Floor 2 - Bath



Max Dimensions: 14'0" x 10'8"  
Calculated Area: 98 sq. ft  
Included: Yes

Heated: Yes  
Finished: Yes  
Enclosed: Yes  
Contiguous: Yes  
Permitted: Yes  
Wet space: Yes  
Addition: No  
Conversion: No