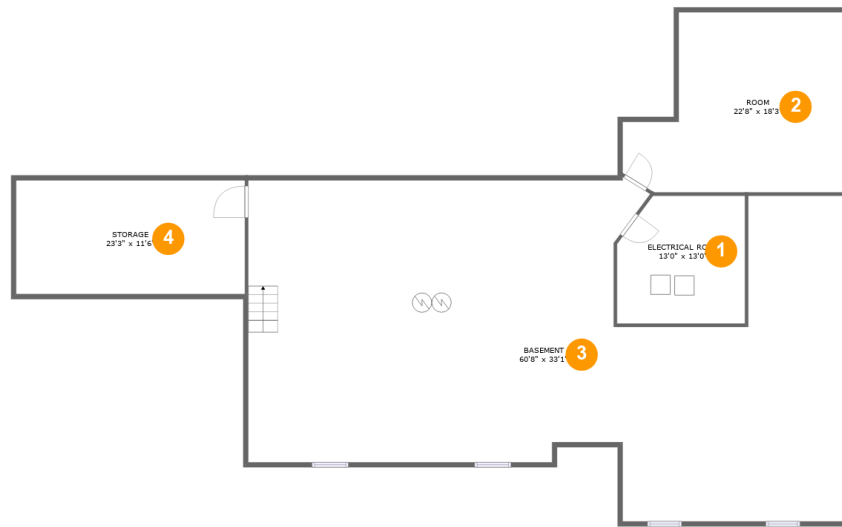


2706 W Beach Rd, Aberdeen, Bingham County, Idaho,
United States, 83210



Room dimensions

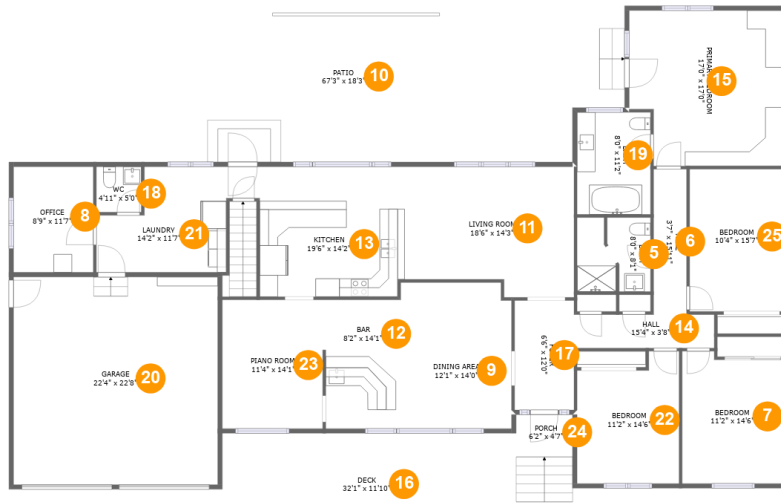
Floor 1

Total sqft: 2592

Living area: 0

#		Dimensions	sqft	Counted as living area
1	Electrical Room	13'0" x 13'0"	160 sq. ft	No
2	Room	22'8" x 18'3"	348 sq. ft	No
3	Basement	60'8" x 33'1"	1652 sq. ft	No
4	Storage	23'3" x 11'6"	268 sq. ft	No

2706 W Beach Rd, Aberdeen, Bingham County, Idaho, United States, 83210



Room dimensions

Floor 2

Total sqft: 4671

Living area: 2604

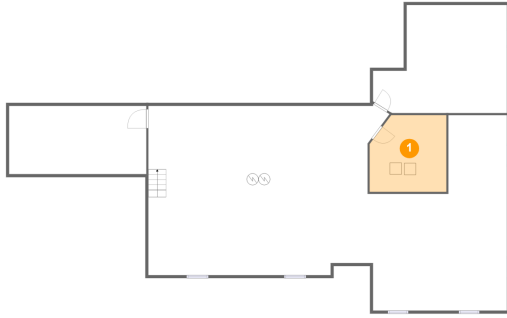
#		Dimensions	sqft	Counted as living area
5	Bath	8'0" x 8'1"	63 sq. ft	Yes
6	Hall	3'7" x 15'11"	57 sq. ft	Yes
7	Bedroom	11'2" x 14'6"	155 sq. ft	Yes
8	Office	8'9" x 11'7"	101 sq. ft	Yes
9	Dining Area	12'1" x 14'0"	191 sq. ft	Yes
10	Patio	67'3" x 18'3"	1128 sq. ft	No
11	Living Room	18'6" x 14'3"	243 sq. ft	Yes
12	Bar	8'2" x 14'1"	115 sq. ft	Yes
13	Kitchen	19'6" x 14'2"	236 sq. ft	Yes
14	Hall	15'4" x 3'8"	56 sq. ft	Yes
15	Primary Bedroom	17'0" x 17'0"	272 sq. ft	Yes

**2706 W Beach Rd, Aberdeen, Bingham County, Idaho,
United States, 83210**

#		Dimensions	sqft	Counted as living area
16	Deck	32'1" x 11'10"	379 sq. ft	No
17	Foyer	6'6" x 12'0"	78 sq. ft	Yes
18	WC	4'11" x 5'0"	24 sq. ft	Yes
19	Bath	8'0" x 11'2"	90 sq. ft	Yes
20	Garage	22'4" x 22'8"	506 sq. ft	No
21	Laundry	14'2" x 11'7"	136 sq. ft	Yes
22	Bedroom	11'2" x 14'6"	145 sq. ft	Yes
23	Piano Room	11'4" x 14'1"	156 sq. ft	Yes
24	Porch	6'2" x 4'7"	28 sq. ft	No
25	Bedroom	10'4" x 15'7"	161 sq. ft	Yes

2706 W Beach Rd, Aberdeen, Bingham County, Idaho,
United States, 83210

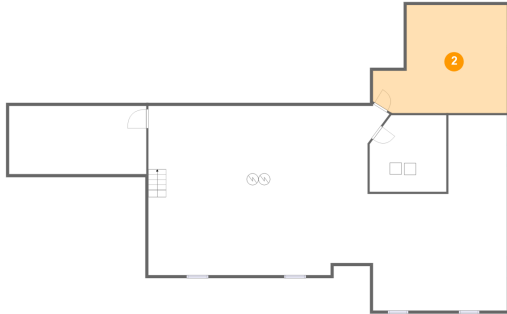
1 Floor 1 - Electrical Room



Dimensions: 13'0" x 13'0"
Area: 160 sq. ft
Counted as living area: No

Heated: No
Finished: No
Enclosed: Yes
Contiguous: Yes
Permitted: Yes
Wet space: No
Addition: No
Conversion: No

2 Floor 1 - Room

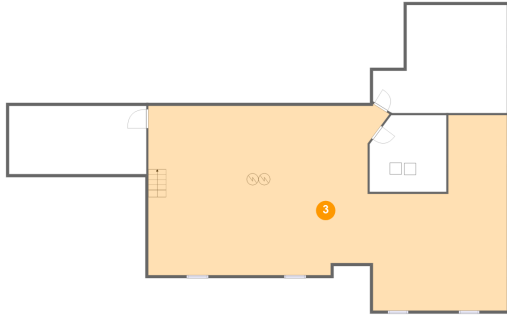


Dimensions: 22'8" x 18'3"
Area: 348 sq. ft
Counted as living area: No

Heated: Yes
Finished: Yes
Enclosed: Yes
Contiguous: No
Permitted: Yes
Wet space: No
Addition: No
Conversion: No

2706 W Beach Rd, Aberdeen, Bingham County, Idaho,
United States, 83210

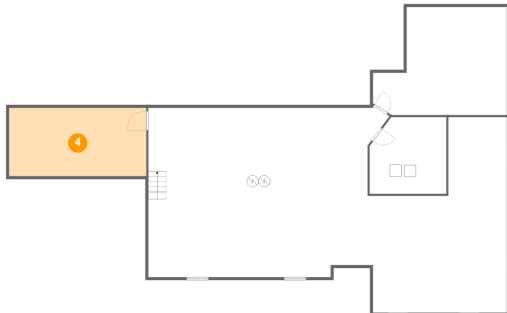
3 Floor 1 - Basement



Dimensions: 60'8" x 33'1"
Area: 1652 sq. ft
Counted as living area: No

Heated: Yes
Finished: No
Enclosed: Yes
Contiguous: Yes
Permitted: Yes
Wet space: No
Addition: No
Conversion: No

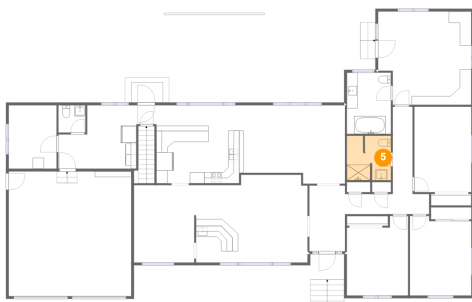
4 Floor 1 - Storage



Dimensions: 23'3" x 11'6"
Area: 268 sq. ft
Counted as living area: No

Heated: No
Finished: No
Enclosed: No
Contiguous: Yes
Permitted: Yes
Wet space: No
Addition: No
Conversion: No

5 Floor 2 - Bath

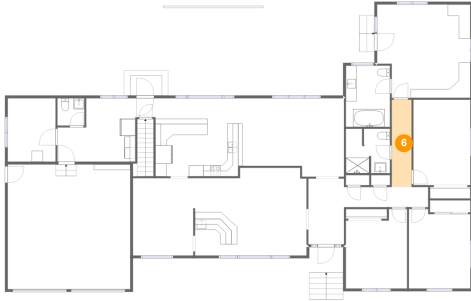


Dimensions: 8'0" x 8'1"
Area: 63 sq. ft
Counted as living area: Yes

Heated: Yes
Finished: Yes
Enclosed: Yes
Contiguous: Yes
Permitted: Yes
Wet space: Yes
Addition: No
Conversion: No

2706 W Beach Rd, Aberdeen, Bingham County, Idaho,
United States, 83210

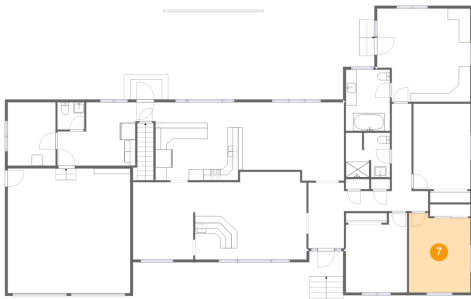
6 Floor 2 - Hall



Dimensions: 3'7" x 15'11"
Area: 57 sq. ft
Counted as living area: Yes

Heated: Yes
Finished: Yes
Enclosed: Yes
Contiguous: Yes
Permitted: Yes
Wet space: No
Addition: No
Conversion: No

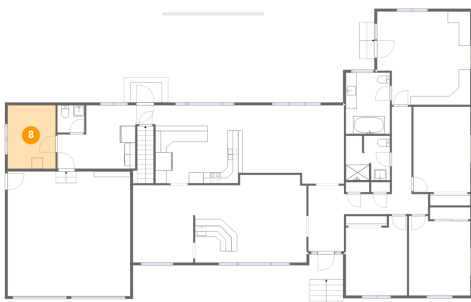
7 Floor 2 - Bedroom



Dimensions: 11'2" x 14'6"
Area: 155 sq. ft
Counted as living area: Yes

Heated: Yes
Finished: Yes
Enclosed: Yes
Contiguous: Yes
Permitted: Yes
Wet space: No
Addition: No
Conversion: No

8 Floor 2 - Office

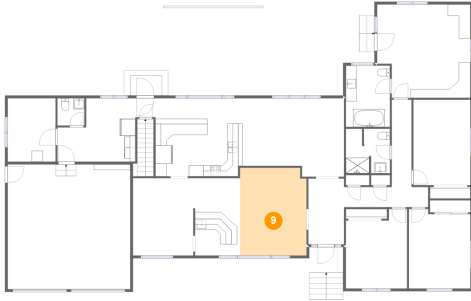


Dimensions: 8'9" x 11'7"
Area: 101 sq. ft
Counted as living area: Yes

Heated: Yes
Finished: Yes
Enclosed: Yes
Contiguous: Yes
Permitted: Yes
Wet space: No
Addition: No
Conversion: No

2706 W Beach Rd, Aberdeen, Bingham County, Idaho,
United States, 83210

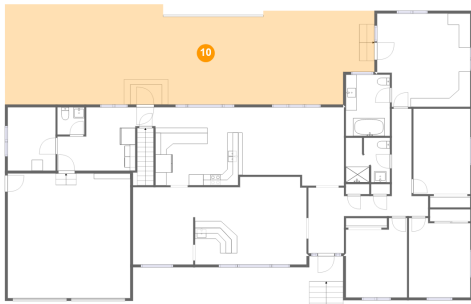
9 Floor 2 - Dining Area



Dimensions: 12'1" x 14'0"
Area: 191 sq. ft
Counted as living area: Yes

Heated: Yes
Finished: Yes
Enclosed: Yes
Contiguous: Yes
Permitted: Yes
Wet space: No
Addition: No
Conversion: No

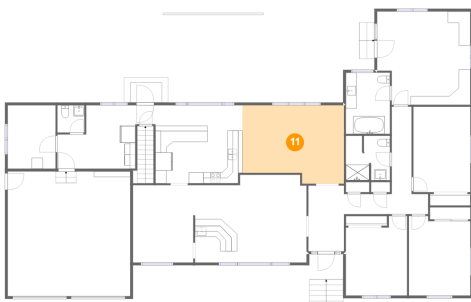
10 Floor 2 - Patio



Dimensions: 67'3" x 18'3"
Area: 1128 sq. ft
Counted as living area: No

Heated: No
Finished: Yes
Enclosed: No
Contiguous: Yes
Permitted: Yes
Wet space: No
Addition: No
Conversion: No

11 Floor 2 - Living Room

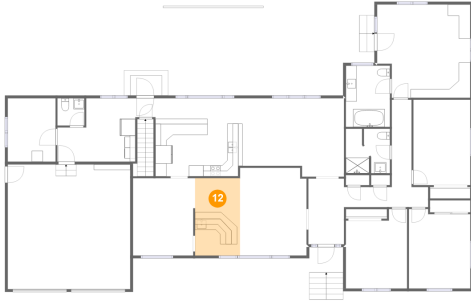


Dimensions: 18'6" x 14'3"
Area: 243 sq. ft
Counted as living area: Yes

Heated: Yes
Finished: Yes
Enclosed: Yes
Contiguous: Yes
Permitted: Yes
Wet space: No
Addition: No
Conversion: No

2706 W Beach Rd, Aberdeen, Bingham County, Idaho,
United States, 83210

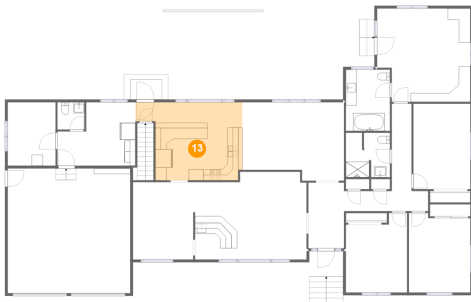
12 Floor 2 - Bar



Dimensions: 8'2" x 14'1"
Area: 115 sq. ft
Counted as living area: Yes

Heated: Yes
Finished: Yes
Enclosed: Yes
Contiguous: Yes
Permitted: Yes
Wet space: No
Addition: No
Conversion: No

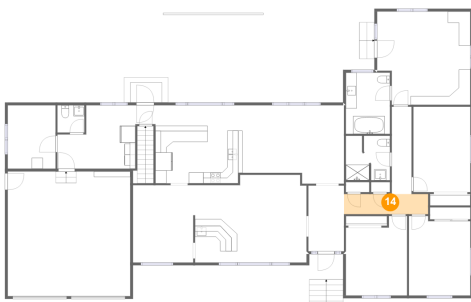
13 Floor 2 - Kitchen



Dimensions: 19'6" x 14'2"
Area: 236 sq. ft
Counted as living area: Yes

Heated: Yes
Finished: Yes
Enclosed: Yes
Contiguous: Yes
Permitted: Yes
Wet space: No
Addition: No
Conversion: No

14 Floor 2 - Hall

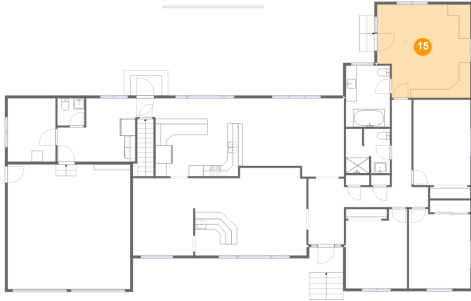


Dimensions: 15'4" x 3'8"
Area: 56 sq. ft
Counted as living area: Yes

Heated: Yes
Finished: Yes
Enclosed: Yes
Contiguous: Yes
Permitted: Yes
Wet space: No
Addition: No
Conversion: No

**2706 W Beach Rd, Aberdeen, Bingham County, Idaho,
United States, 83210**

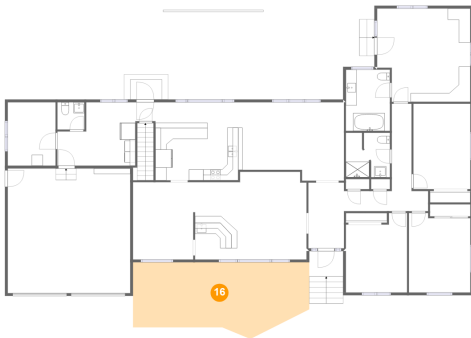
15 Floor 2 - Primary Bedroom



Dimensions: 17'0" x 17'0"
Area: 272 sq. ft
Counted as living area: Yes

Heated: Yes
Finished: Yes
Enclosed: Yes
Contiguous: Yes
Permitted: Yes
Wet space: No
Addition: No
Conversion: No

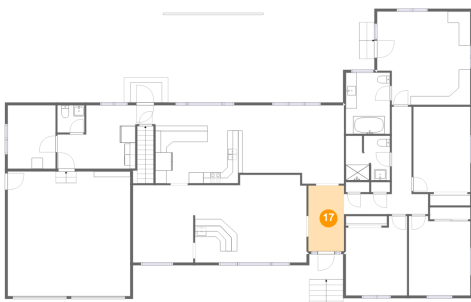
16 Floor 2 - Deck



Dimensions: 32'1" x 11'10"
Area: 379 sq. ft
Counted as living area: No

Heated: No
Finished: Yes
Enclosed: No
Contiguous: Yes
Permitted: Yes
Wet space: No
Addition: No
Conversion: No

17 Floor 2 - Foyer

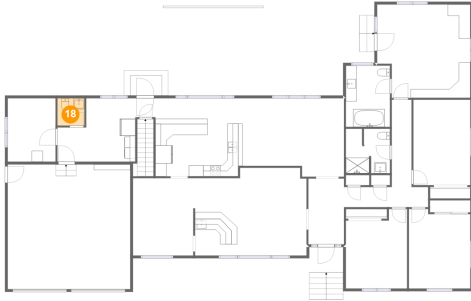


Dimensions: 6'6" x 12'0"
Area: 78 sq. ft
Counted as living area: Yes

Heated: Yes
Finished: Yes
Enclosed: Yes
Contiguous: Yes
Permitted: Yes
Wet space: No
Addition: No
Conversion: No

2706 W Beach Rd, Aberdeen, Bingham County, Idaho,
United States, 83210

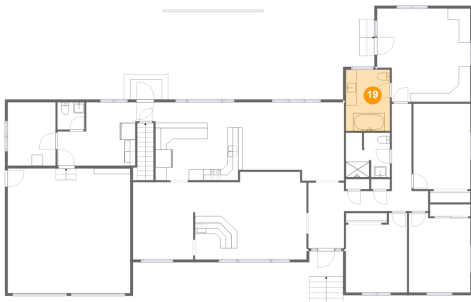
18 Floor 2 - WC



Dimensions: 4'11" x 5'0"
Area: 24 sq. ft
Counted as living area: Yes

Heated: Yes
Finished: Yes
Enclosed: Yes
Contiguous: Yes
Permitted: Yes
Wet space: Yes
Addition: No
Conversion: No

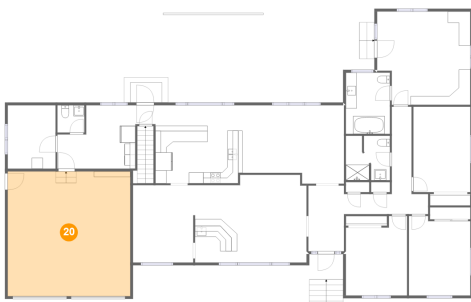
19 Floor 2 - Bath



Dimensions: 8'0" x 11'2"
Area: 90 sq. ft
Counted as living area: Yes

Heated: Yes
Finished: Yes
Enclosed: Yes
Contiguous: Yes
Permitted: Yes
Wet space: Yes
Addition: No
Conversion: No

20 Floor 2 - Garage

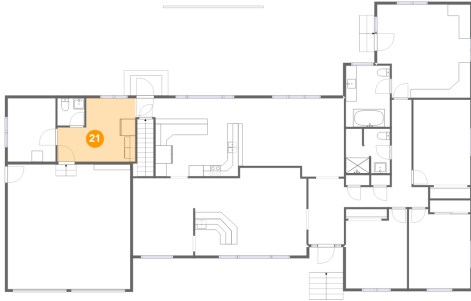


Dimensions: 22'4" x 22'8"
Area: 506 sq. ft
Counted as living area: No

Heated: No
Finished: No
Enclosed: Yes
Contiguous: Yes
Permitted: Yes
Wet space: No
Addition: No
Conversion: No

2706 W Beach Rd, Aberdeen, Bingham County, Idaho,
United States, 83210

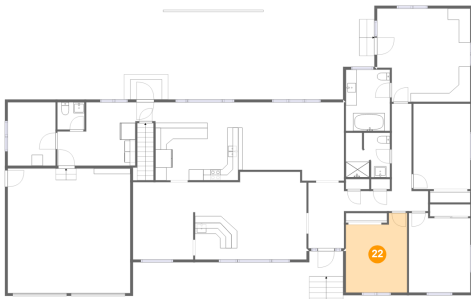
21 Floor 2 - Laundry



Dimensions: 14'2" x 11'7"
Area: 136 sq. ft
Counted as living area: Yes

Heated: Yes
Finished: Yes
Enclosed: Yes
Contiguous: Yes
Permitted: Yes
Wet space: No
Addition: No
Conversion: No

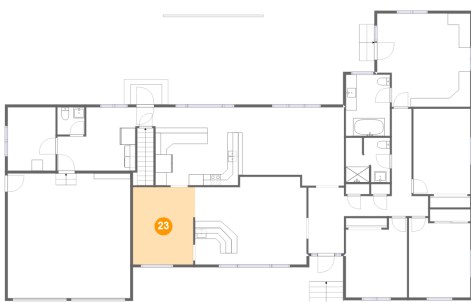
22 Floor 2 - Bedroom



Dimensions: 11'2" x 14'6"
Area: 145 sq. ft
Counted as living area: Yes

Heated: Yes
Finished: Yes
Enclosed: Yes
Contiguous: Yes
Permitted: Yes
Wet space: No
Addition: No
Conversion: No

23 Floor 2 - Piano Room

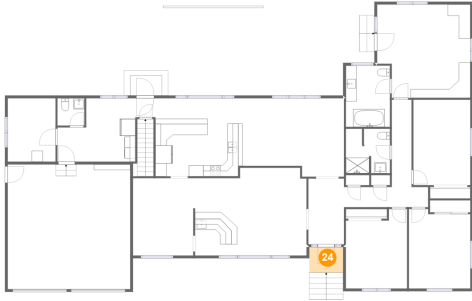


Dimensions: 11'4" x 14'1"
Area: 156 sq. ft
Counted as living area: Yes

Heated: Yes
Finished: Yes
Enclosed: Yes
Contiguous: Yes
Permitted: Yes
Wet space: No
Addition: No
Conversion: No

2706 W Beach Rd, Aberdeen, Bingham County, Idaho,
United States, 83210

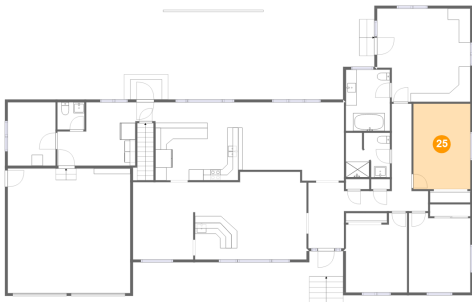
24 Floor 2 - Porch



Dimensions: 6'2" x 4'7"
Area: 28 sq. ft
Counted as living area: No

Heated: No
Finished: Yes
Enclosed: No
Contiguous: Yes
Permitted: Yes
Wet space: No
Addition: No
Conversion: No

25 Floor 2 - Bedroom



Dimensions: 10'4" x 15'7"
Area: 161 sq. ft
Counted as living area: Yes

Heated: Yes
Finished: Yes
Enclosed: Yes
Contiguous: Yes
Permitted: Yes
Wet space: No
Addition: No
Conversion: No